

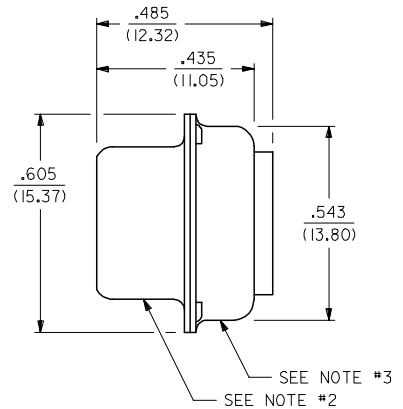
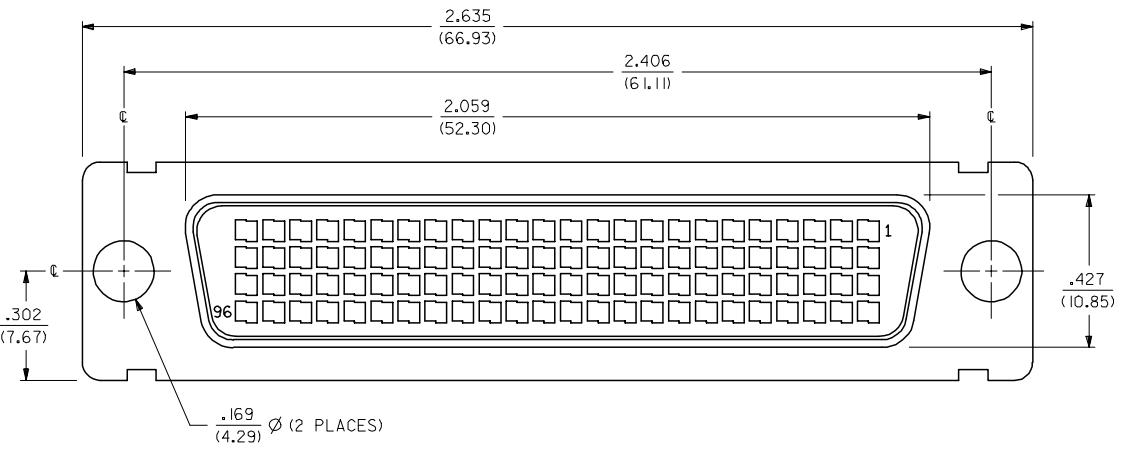
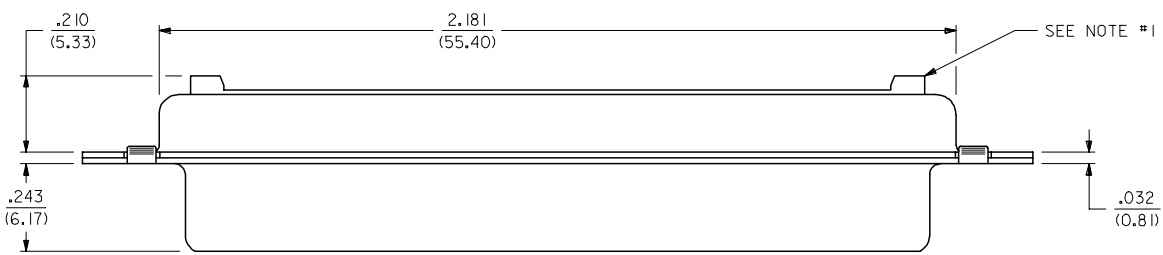
EDP NUMBER	PRODUCT DESCRIPTION	FRONT SHELL PLATING
051-26-0002	RECEPT. CONNECTOR SUB-ASSEMBLY (FRONT SHELL-HOUSING-BACK SHELL) ONLY	BRIGHT TIN
70660-8002	RECEPT. CONNECTOR SUB-ASSEMBLY (FRONT SHELL-HOUSING-BACK SHELL) ONLY	BRIGHT NICKEL

NOTES:

- CONNECTOR MATERIALS:
HOUSING AND INSERT-MOLDED STICKS ARE BOTH MADE OF GLASS FILLED LCP (LIQUID CRYSTAL POLYMER), RATED U.L. 94 V-0, COLOR IS BLACK; TERMINALS ARE .013/(0.33) THICK BERYLLIUM COPPER; TERMINAL PLATING IS .000030/(.00076) MINIMUM GOLD IN CONTACT AREA, AND .000100/(.00254) MINIMUM TIN ON P.C. TAILS, OVER NICKEL UNDERPLATE OVERALL.
- FRONT SHELL:
DRAW QUALITY STEEL, .016/(0.41) THICK;
PLATING: SEE TABLE
BRIGHT TIN: 150-250 MICRONS/(3.81-6.35 MICROMETERS) BRIGHT TIN OVER 50-150 MICRONS/(1.27-3.81 MICROMETERS) NICKEL OVER COPPER FLASH OVERALL (OPTIONAL).
BRIGHT NICKEL: 100-175 MICRONS/(2.54-4.44 MICROMETERS) BRIGHT NICKEL OVER 50 MICRONS/(1.27 MICROMETERS) MAXIMUM COPPER OVERALL.
- BACK SHELL:
DRAW QUALITY STEEL, .016/(0.41) THICK;
PLATING: 150-250 MICRONS/(3.81-6.35 MICROMETERS) BRIGHT TIN OVER 50-150 MICRONS/(1.27-3.81 MICROMETERS) NICKEL OVER COPPER FLASH OVERALL (OPTIONAL).
- ALL DIMENSIONS ARE SHOWN FOR REFERENCE ONLY UNLESS SPECIFIED OTHERWISE.
- THIS CONNECTOR CONFORMS TO PRODUCT SPECIFICATION PS-70660.
- INSERT-MOLDED TERMINAL STRIP ASSEMBLIES ARE SUPPLIED SEPARATELY FOR SOLDERING TO STRANDED WIRE CABLE. (SEE SHEET 2 FOR CUSTOMER ORDER NUMBER).
- PART COMPLIES WITH CLASS B OF COSMETIC SPECIFICATION PS-45499-002

J
I
H
G
F
E
D
C
B
A

J
I
H
G
F
E
D
C
B
A

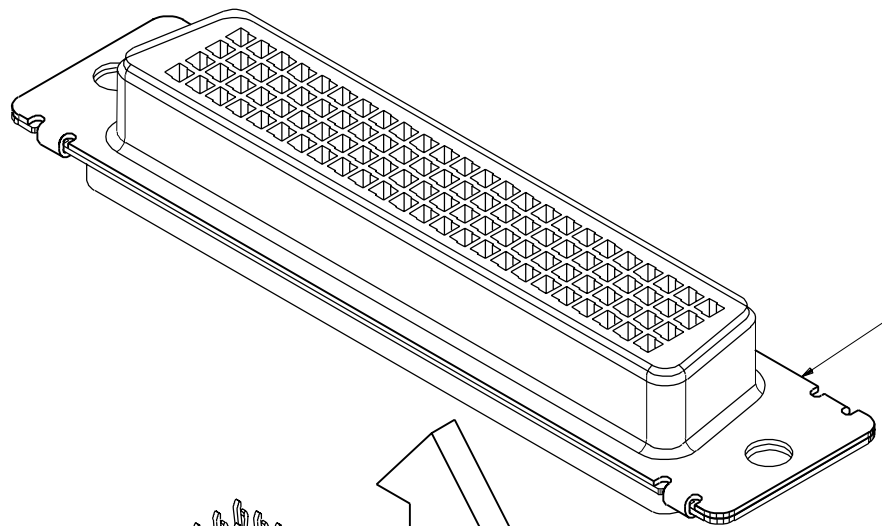


2	A
1	D
SHT	REV

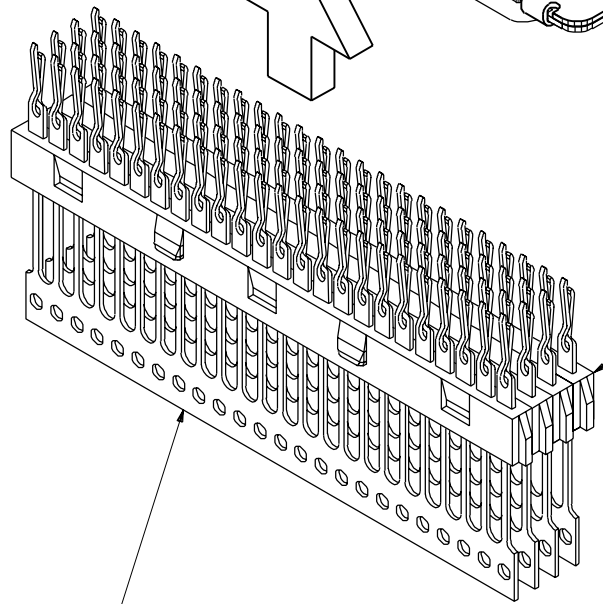
NOTE FOR LEAD FREE CONVERSION:
THE PRIMARY SHIPPING CARTON WILL BE LABELED "COMPLIANT TO RoHS DIRECTIVE 2002/95/EC AND ELV ANNEX II OF DIRECTIVE 2000/53/EC". CARTONS WITHOUT THIS LABEL MAY CONTAIN PRODUCT WITH LEAD.

ADD NOTE 7 FC NO: UCP2006-3051 DRAWN BY: BARRA 2006/07/10 CHKD: BORGAN 2006/07/10 APPR: SMILLER 2006/07/11	QUALITY SYMBOLS	GENERAL TOLERANCES (UNLESS SPECIFIED)	DIMENSION STYLE	SCALE	DESIGN UNITS	THIRD ANGLE PROJECTION
	▽=0 ▽=0	mm INCH	IN/MM	4:1	INCH	
		4 PLACES ± --- ± ---	DRAWN BY DATE	SCHMIDGALL 93/04/21	TITLE	LFH .075 PITCH, 96 CKT. VERTICAL I/O RECEPTACLE CONNECTOR FOR CABLE
		3 PLACES ± --- ± ---	CHECKED BY DATE	CAB 93/04/21	MATERIAL NO.	SDA-70660-2001
	2 PLACES ± --- ± ---	APPROVED BY DATE	CAB 93/04/21	DOCUMENT NO.		
	1 PLACE ± --- ± ---					
	ANGULAR ±1/2°					
		DRAFT WHERE APPLICABLE MUST REMAIN WITHIN DIMENSIONS	SEE TABLE			SHEET NO. 1 OF 2

DRAWN BY DATE		DATE		TITLE	
SCHMIDGALL 93/04/21		93/04/21		LFH .075 PITCH, 96 CKT. VERTICAL I/O RECEPTACLE CONNECTOR FOR CABLE	
CHECKED BY DATE		DATE		MATERIAL NO.	
CAB 93/04/21		93/04/21		SDA-70660-2001	
APPROVED BY DATE		DATE		DOCUMENT NO.	
CAB 93/04/21		93/04/21		SDA-70660-2001	
MATERIAL NO.		DOCUMENT NO.		SHEET NO.	
SEE TABLE		SEE TABLE		1 OF 2	
THIS DRAWING CONTAINS INFORMATION THAT IS PROPRIETARY TO MOLEX INCORPORATED AND SHOULD NOT BE USED WITHOUT WRITTEN PERMISSION					



RECEPTACLE CONNECTOR
SUB-ASSEMBLY (AS SHOWN ON SHEET 1)



INSERT-MOLDED STICKS
SUPPLIED SEPARATELY
CUSTOMER ORDER NUMBER: 051-24-1004
(SEE SALES DRAWING: SDA-71988-4001)

NOTE: CARRIER TO BE REMOVED PRIOR
TO FASTENING CABLE BY CUSTOMER

70660

MFG. SH. REV.

LTR.	REVISIONS	LTR.	REVISIONS
		A	SEE SHEET 1

DIMENSIONS SHOWN (METRIC) INCH	
UNLESS OTHERWISE SPECIFIED TOLERANCES: ANGULAR ± 1/2°	
3 PLACE ±	INCH METRIC
2 PLACE ±	±
1 PLACE	±
DRAFT WHERE APPLICABLE MUST REMAIN WITHIN DIMENSIONS	
DRWG. BY: SCHMIDGALL	CHK'D. BY: CAB
APP'D. BY: CAB	SCALE: 4 : 1

▽ = 0	▼ = 0	REVISE ONLY ON CAD SYSTEM	
TITLE: LFH, .075 PITCH, 96 CKT., VERTICAL I/O RECEPT. CONNECTOR FOR CABLE (SALES DRAWING)			
MOLEX INCORPORATED		SHEET NO. 2	DATE 04/21/93
L15LE.ILL. 60532 U.S.A.			
PART NO. SEE CHART		DRWG. NO. SDA-70660-2001	
FILE NAME: S070660009.DCN		THIS DRAWING CONTAINS INFORMATION THAT IS PROPRIETARY TO MOLEX INC. AND SHOULD NOT BE USED WITHOUT WRITTEN PERMISSION.	
DIV. CPP		SIZE C	