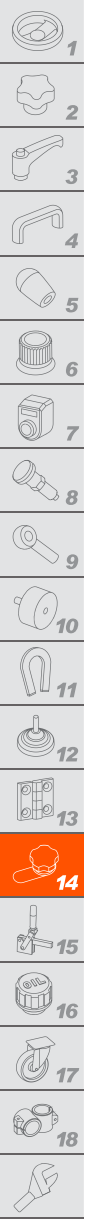


VCK. Cam latches with knob

steel or stainless steel cam



1 KNOB

Phenolic based (PF) Duroplast, black colour, glossy finish.

STANDARD EXECUTIONS

- **VCK** (for doors with thickness $S > 5$ mm):
 - plain stud in zinc-plated steel;
 - helical latch cam in sintered and vaporized steel with hole for pinning;
 - spring dowel pin $\varnothing 3 \times 20$ mm in black-oxide steel;
 - latch spring to compensate door thickness in zinc-plated steel;
 - opening to the right side (D) or left side (S).
- **VCK+G** (for doors with thickness $S > 5$ mm): as per VCK but with the interposition of guide bush and nut (except type with $L = 24$ mm), in nickel-plated brass and flat spring washer in zinc-plated steel.
- opening to the right side (D) or left side (S).
- **VCK-SST**: (for doors with thickness $S > 5$ mm):
 - plain stud in AISI 303 stainless steel;
 - helical latch cam in AISI 316 L sintered stainless steel with hole for pinning;
 - spring dowel pin $\varnothing 3 \times 20$ mm in AISI 303 stainless steel;
 - latch spring to compensate door thickness in AISI 302 stainless steel;
 - opening to the right side (D) or left side (S).
- **VCK+G-SST** (for doors with thickness $S \leq 5$ mm): as per VCK-SST but with the interposition of guide bush, nut and DIN 6798 flat spring washer in AISI 303 stainless steel.
- opening to the right side (D) or left side (S).

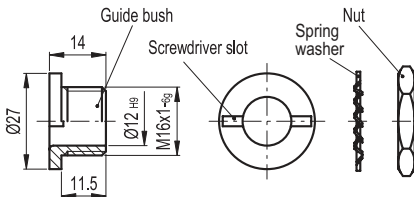
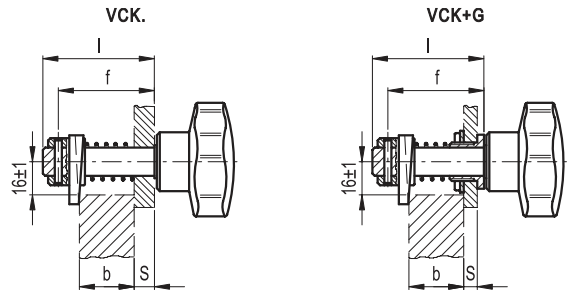
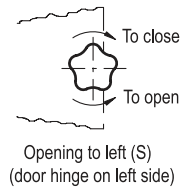
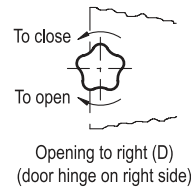
ASSEMBLY INSTRUCTIONS

1. Select the knob with stud length (l) according to the conditions reported in the here-under table.
2. Drill a cylindrical assembly hole in the door according to the conditions reported in the table.
3. Drill a hole in the stud for pinning at a distance "f" from the knob according to the conditions reported in the table.
4. Fit the stud in the hole on the door and assemble the other components.

VCK. latches are supplied not assembled.



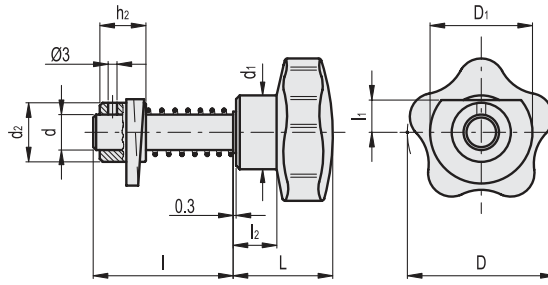
ELESA Original design



| Code | Description | Kit guide, nut for |
|-------|-------------|--------------------|
| 15201 | GG-VCK | VCK. |
| 15211 | GG-VCK-SST | VCK-SST |

| Thickness of the door / ledge | Executions | Length of the stud (l) | Mounting hole | Hole distance for pinning |
|-------------------------------|---------------|------------------------|---------------------|---------------------------|
| $S \leq 5$ | $S+b \leq 9$ | 24 | $\varnothing 12$ H9 | $f=S+b+8.5$ |
| | $b > 9$ | | | |
| $S \leq 5$ | $S+b \leq 31$ | 54 | $\varnothing 16$ H9 | $f=S+b+11$ |
| | $b > 22.5-S$ | | | |
| | $S+b \leq 39$ | | | |
| | $b > 27.5-S$ | | | |
| $S > 5$ | $S+b \leq 49$ | 64 | $\varnothing 12$ H9 | $f=S+b+8.5$ |
| | $b > 29.5-S$ | | | |
| | $S+b \leq 31$ | | | |
| | $b > 11$ | | | |
| $S > 5$ | $S+b \leq 39$ | 54 | $\varnothing 12$ H9 | $f=S+b+8.5$ |
| | $b > 16$ | | | |
| | $S+b \leq 49$ | | | |
| | $b > 18$ | 64 | | |

| Conversion Table 1 mm = 0.039 inch | | | |
|---------------------------------------|------|----|------|
| D | | I | |
| mm | inch | mm | inch |
| 50 | 1.97 | 24 | 0.94 |
| 60 | 2.36 | 46 | 1.81 |
| 70 | 2.76 | 54 | 2.13 |
| | | 64 | 2.52 |



VCK. VCK+G

METRIC

| Code | Description | D | D1 | L | I | l1 | l2 | d | d1 | d2 | h2 | ⚖ |
|-------|---------------|----|----|----|----|----|----|----|----|----|----|-----|
| 68301 | VCK.50-24-D | 50 | 45 | 33 | 24 | 12 | 14 | 12 | 25 | 20 | 15 | 140 |
| 68302 | VCK.50-24-S | 50 | 45 | 33 | 24 | 12 | 14 | 12 | 25 | 20 | 15 | 140 |
| 68321 | VCK.50-46-D | 50 | 45 | 33 | 46 | 12 | 14 | 12 | 25 | 20 | 15 | 165 |
| 68322 | VCK.50-46-S | 50 | 45 | 33 | 46 | 12 | 14 | 12 | 25 | 20 | 15 | 165 |
| 68331 | VCK.50-46+G-D | 50 | 45 | 33 | 46 | 12 | 14 | 12 | 25 | 20 | 15 | 190 |
| 68332 | VCK.50-46+G-S | 50 | 45 | 33 | 46 | 12 | 14 | 12 | 25 | 20 | 15 | 190 |
| 68421 | VCK.60-46-D | 60 | 45 | 37 | 46 | 12 | 17 | 12 | 27 | 20 | 15 | 185 |
| 68422 | VCK.60-46-S | 60 | 45 | 37 | 46 | 12 | 17 | 12 | 27 | 20 | 15 | 185 |
| 68431 | VCK.60-46+G-D | 60 | 45 | 37 | 46 | 12 | 17 | 12 | 27 | 20 | 15 | 210 |
| 68432 | VCK.60-46+G-S | 60 | 45 | 37 | 46 | 12 | 17 | 12 | 27 | 20 | 15 | 210 |
| 68441 | VCK.60-54-D | 60 | 45 | 37 | 54 | 12 | 17 | 12 | 27 | 20 | 15 | 200 |
| 68442 | VCK.60-54-S | 60 | 45 | 37 | 54 | 12 | 17 | 12 | 27 | 20 | 15 | 200 |
| 68451 | VCK.60-54+G-D | 60 | 45 | 37 | 54 | 12 | 17 | 12 | 27 | 20 | 15 | 225 |
| 68452 | VCK.60-54+G-S | 60 | 45 | 37 | 54 | 12 | 17 | 12 | 27 | 20 | 15 | 225 |
| 68461 | VCK.60-64-D | 60 | 45 | 37 | 64 | 12 | 17 | 12 | 27 | 20 | 15 | 210 |
| 68462 | VCK.60-64-S | 60 | 45 | 37 | 64 | 12 | 17 | 12 | 27 | 20 | 15 | 210 |
| 68471 | VCK.60-64+G-D | 60 | 45 | 37 | 64 | 12 | 17 | 12 | 27 | 20 | 15 | 235 |
| 68472 | VCK.60-64+G-S | 60 | 45 | 37 | 64 | 12 | 17 | 12 | 27 | 20 | 15 | 235 |
| 68521 | VCK.70-54-D | 70 | 45 | 44 | 54 | 12 | 20 | 12 | 30 | 20 | 15 | 235 |
| 68522 | VCK.70-54-S | 70 | 45 | 44 | 54 | 12 | 20 | 12 | 30 | 20 | 15 | 235 |
| 68531 | VCK.70-54+G-D | 70 | 45 | 44 | 54 | 12 | 20 | 12 | 30 | 20 | 15 | 260 |
| 68532 | VCK.70-54+G-S | 70 | 45 | 44 | 54 | 12 | 20 | 12 | 30 | 20 | 15 | 260 |
| 68541 | VCK.70-64-D | 70 | 45 | 44 | 64 | 12 | 20 | 12 | 30 | 20 | 15 | 245 |
| 68542 | VCK.70-64-S | 70 | 45 | 44 | 64 | 12 | 20 | 12 | 30 | 20 | 15 | 245 |
| 68551 | VCK.70-64+G-D | 70 | 45 | 44 | 64 | 12 | 20 | 12 | 30 | 20 | 15 | 270 |
| 68552 | VCK.70-64+G-S | 70 | 45 | 44 | 64 | 12 | 20 | 12 | 30 | 20 | 15 | 270 |

VCK-SST VCK+G-SST

INOX STAINLESS STEEL

METRIC

| Code | Description | D | D1 | L | I | l1 | l2 | d | d1 | d2 | h2 | ⚖ |
|-------|-------------------|----|----|----|----|----|----|----|----|----|----|-----|
| 68325 | VCK.50-46-D-SST | 50 | 45 | 33 | 46 | 12 | 14 | 12 | 25 | 20 | 15 | 165 |
| 68326 | VCK.50-46-S-SST | 50 | 45 | 33 | 46 | 12 | 14 | 12 | 25 | 20 | 15 | 165 |
| 68335 | VCK.50-46+G-D-SST | 50 | 45 | 33 | 46 | 12 | 14 | 12 | 25 | 20 | 15 | 190 |
| 68336 | VCK.50-46+G-S-SST | 50 | 45 | 33 | 46 | 12 | 14 | 12 | 25 | 20 | 15 | 190 |
| 68425 | VCK.60-46-D-SST | 60 | 45 | 37 | 46 | 12 | 17 | 12 | 27 | 20 | 15 | 185 |
| 68426 | VCK.60-46-S-SST | 60 | 45 | 37 | 46 | 12 | 17 | 12 | 27 | 20 | 15 | 185 |
| 68435 | VCK.60-46+G-D-SST | 60 | 45 | 37 | 46 | 12 | 17 | 12 | 27 | 20 | 15 | 210 |
| 68436 | VCK.60-46+G-S-SST | 60 | 45 | 37 | 46 | 12 | 17 | 12 | 27 | 20 | 15 | 210 |
| 68465 | VCK.60-64-D-SST | 60 | 45 | 37 | 64 | 12 | 17 | 12 | 27 | 20 | 15 | 210 |
| 68466 | VCK.60-64-S-SST | 60 | 45 | 37 | 64 | 12 | 17 | 12 | 27 | 20 | 15 | 210 |
| 68475 | VCK.60-64+G-D-SST | 60 | 45 | 37 | 64 | 12 | 17 | 12 | 27 | 20 | 15 | 235 |
| 68476 | VCK.60-64+G-S-SST | 60 | 45 | 37 | 64 | 12 | 17 | 12 | 27 | 20 | 15 | 235 |



Latches