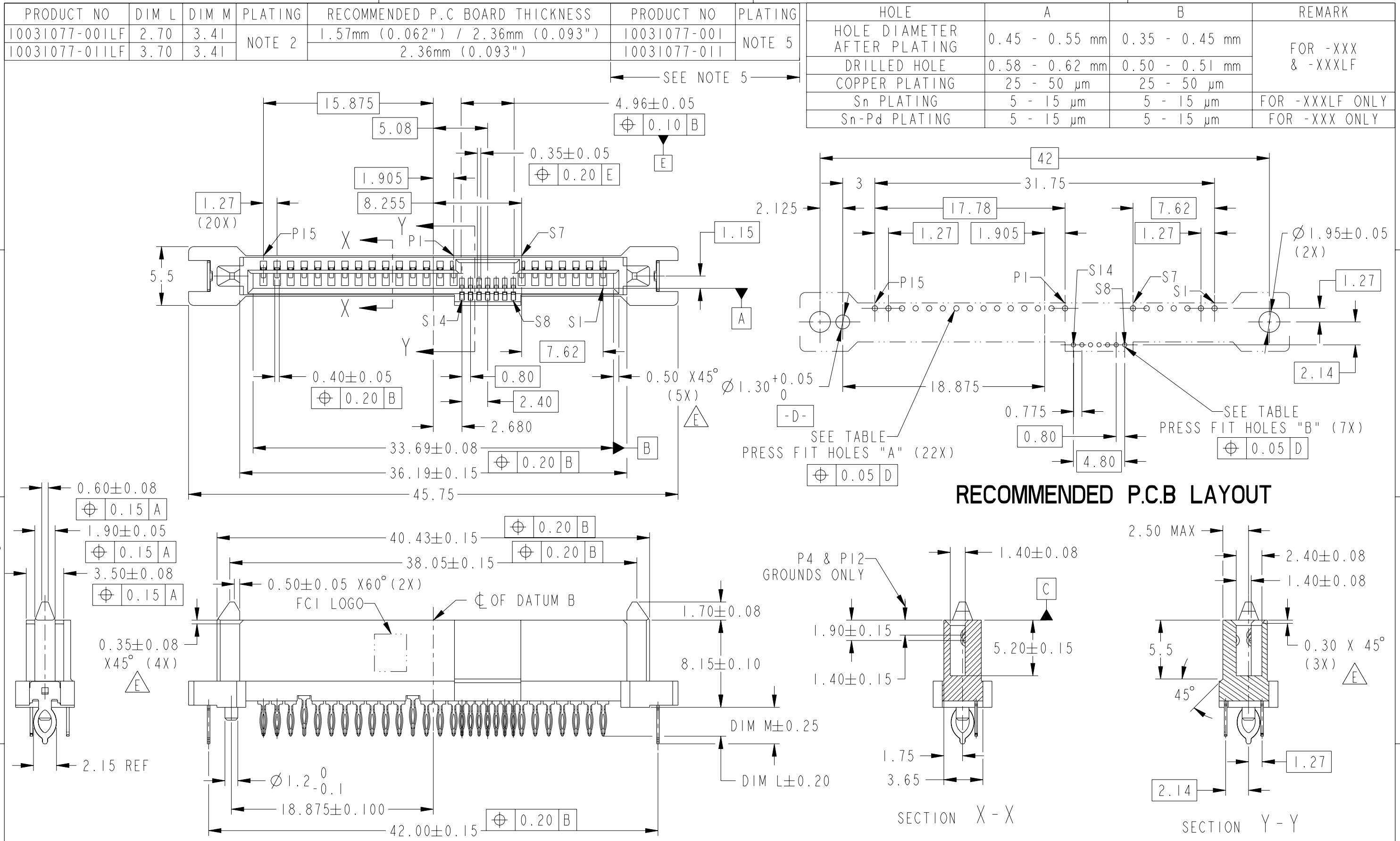


FCI CONFIDENTIAL

This document is the property of and embodies CONFIDENTIAL and PROPRIETARY information of FCI. No part of the information shown on this document may be used in any way or disclosed to others without the written consent of FCI. Copyright FCI.



RECOMMENDED P.C.B LAYOUT

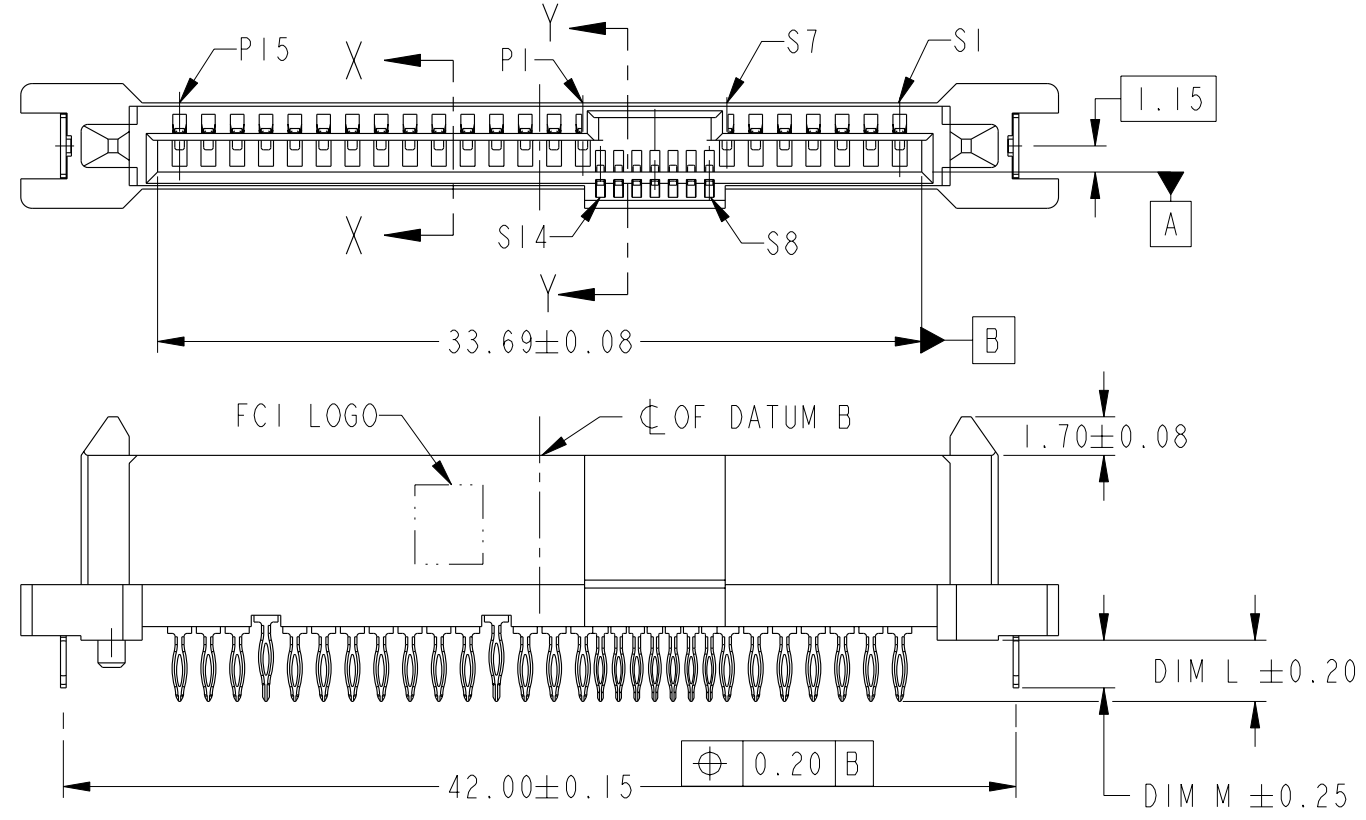
TOLERANCES UNLESS OTHERWISE SPECIFIED			tolerance std	material	dr	GL LOO	2004-09-23	projection	MM	size	scale
linear	X.	±-	ISO 406	mat code	eng	GL LOO	2004-09-23			A3	3:1
	0.X	±-	ISO 1101	heatreat	chr	GL LOO	2010-10-28			ecn no	S10-0228
	0.XX	±0.20	surface ✓	plating/finish	appr	JOEY NG	2010-10-28	product family	SAS	rel level	-
	0.XXX	±-		spec ref	-		SAS RECEPTACLE	dwg no	10031077	rev	E
	0.XXXX	±-		model name	10031077	www.fci.com	VERTICAL PF TYPE ASSY	cat. no.	-	Product - Customer Drw	sheet 1 of 2
angular	0°	±2°	ISO 1302	model revision							

FCI CONFIDENTIAL

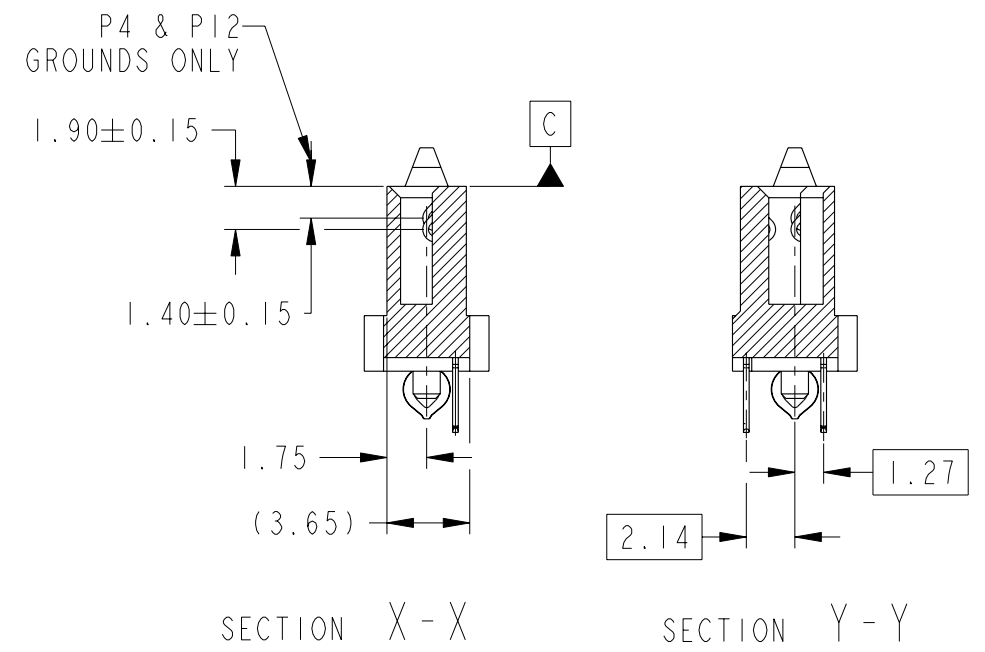


This document is the property of and embodies CONFIDENTIAL and PROPRIETARY information of FCI. No part of the information shown on this document may be used in any way or disclosed to others without the written consent of FCI. Copyright FCI.

PRODUCT NO	DIM L	DIM M	PLATING	RECOMMENDED P.C BOARD THICKNESS
10031077-003LF	2.70	2.10	NOTE 2	1.57mm (0.062") / 2.36mm(0.093")



NOTE:
ALL OTHER DIMENSIONS, REFER TO SHEET 1.



NOTES:

1. MATERIAL :
 - 1) HOUSING : HIGH TEMP. THERMOPLASTIC, UL 94V-0
 - COLOR : BLACK
 - 2) TERMINAL : COPPER ALLOY
 - 3) HOLD DOWN : COPPER ALLOY
2. FINISH : FOR XXXXXXXX-XXXLF
 - 1) TERMINAL : 30μ" Au PLATING (CONTACT POINT) OVER 50μ" MIN NICKEL
 - 2) SOLDER TAIL : 20μ" MIN - 60μ" MAX TIN OVER 50μ" MIN NICKEL
 - 3) HOLD DOWN : 50μ" MIN TIN OVER 50μ" MIN NICKEL
3. TRUE POSITION NOTES APPLY AT (L= 2.70mm) TERMINAL TIP
4. PER SFF REV 1.1 EXCEPT 0.8mm PITCH BUMP AREA.
5. FINISH : FOR XXXXXXXX-XXX
 - 1) TERMINAL : 30μ" Au PLATING (CONTACT POINT) OVER 50μ" MIN NICKEL
 - 2) SOLDER TAIL : 20μ" MIN - 60μ" MAX TIN-LEAD OVER 50μ" MIN NICKEL
 - 3) HOLD DOWN : 50μ" MIN TIN-LEAD OVER 50μ" MIN NICKEL

6. THE HOUSING WILL WITHSTAND EXPOSURE TO 260°C PEAK TEMPERATURE FOR 10 SECONDS IN A CONVECTION, INFRA-RED OR VAPOR PHASE REFLOW OVEN.
7. THIS PRODUCT MEETS EUROPEAN UNION DIRECTIVES AND OTHER COUNTRY REGULATIONS AS DESCRIBED IN GS-22-008.
8. PART NUMBERS ENDING IN "LF" MEANS FOR NOTE 7 LEAD FREE IDENTIFICATION.
9. NOTE 7 AND 8 DO NOT APPLY TO TIN LEAD PLATING P/N XXXXXXXX-XXX IN TABLE.
10. THE STD PACKAGING IS IN TRAY
11. A $\triangle E$ SYMBOL WILL BE NEXT TO ANY DIMENSION, VIEW, OR NOTE WHICH HAS BEEN MODIFIED WITH THE CURRENT DRAWING REVISION.

TOLERANCES UNLESS OTHERWISE SPECIFIED		tolerance std	material -	dr	GL LOO	2004-09-23	projection	MM	size	A3	scale	3:1
linear	X.	±-	ISO 406	mat code -	eng	GL LOO	2004-09-23		SAS	rel level -	ecn no	S10-0228
	0.X	±-	ISO 1101	heat treat -	chr	GL LOO	2010-10-28					
	0.XX	±0.20	surface ✓	plating/finish -	appr	JOEY NG	2010-10-28					
	0.XXX	±-		spec ref -			SAS RECEPTACLE VERTICAL PF TYPE ASSY					
0.XXXX	±-	model name	10031077						cat. no.	-	Product - Customer Drw	sheet 2 of 2
angular	0°	±2°	ISO 1302	model revision	www.fci.com		Product - Customer Drw		sheet 2 of 2			