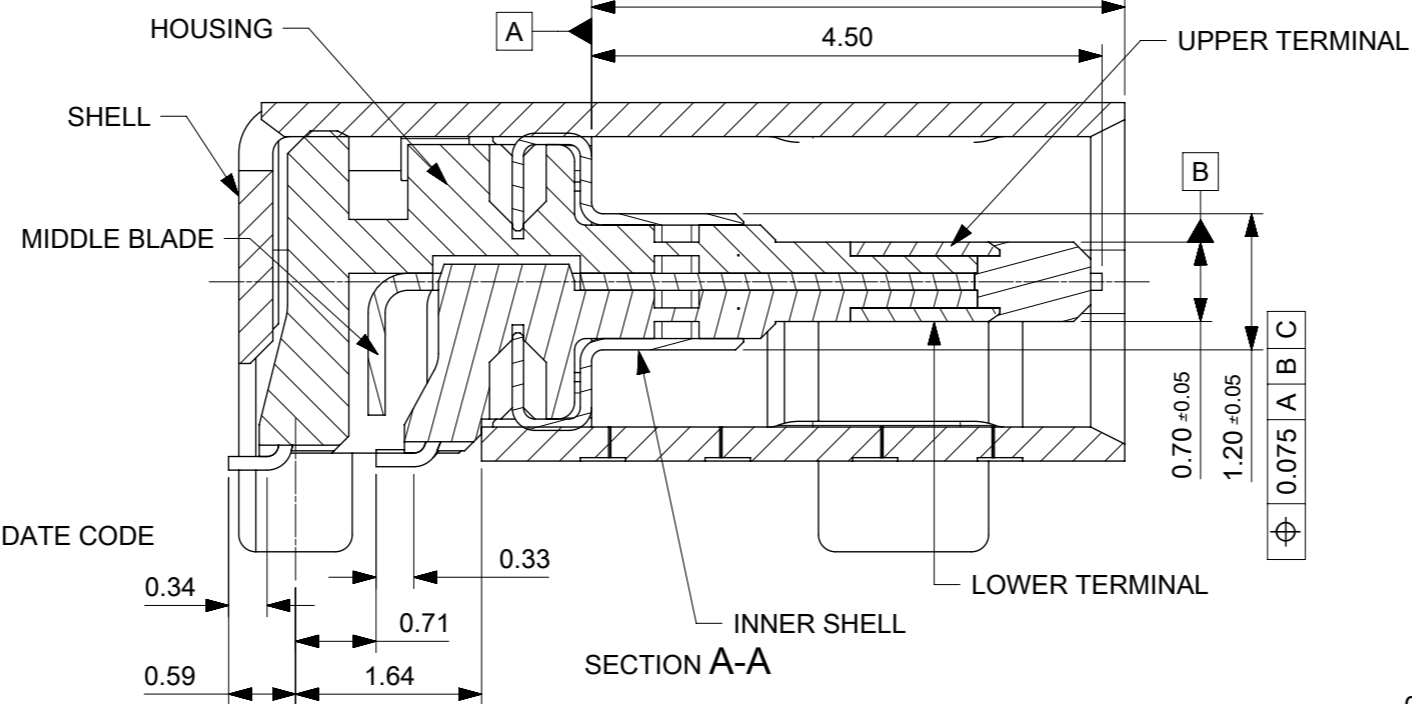
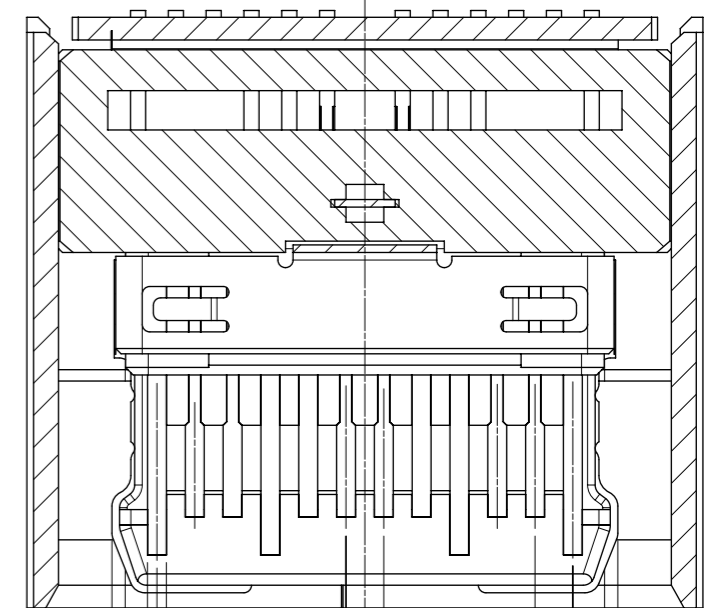


DATE CODE

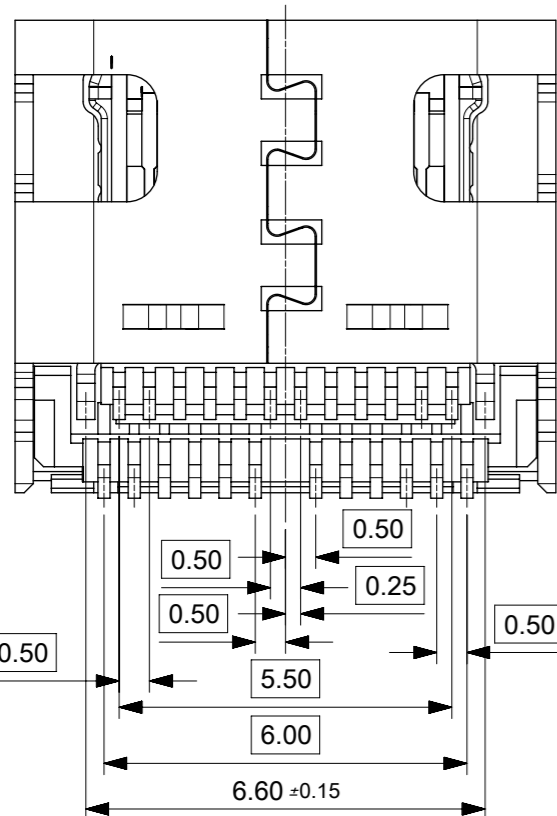
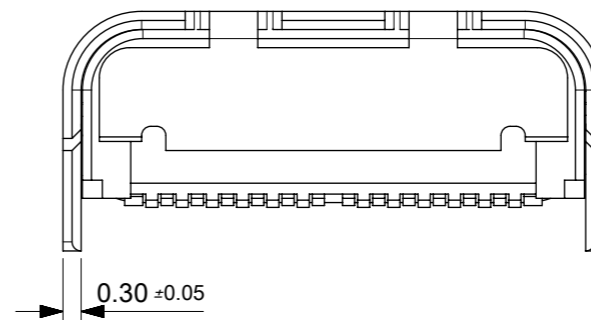
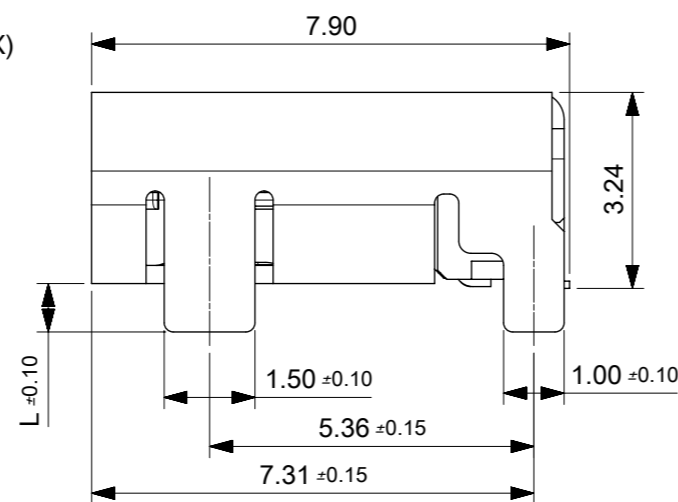
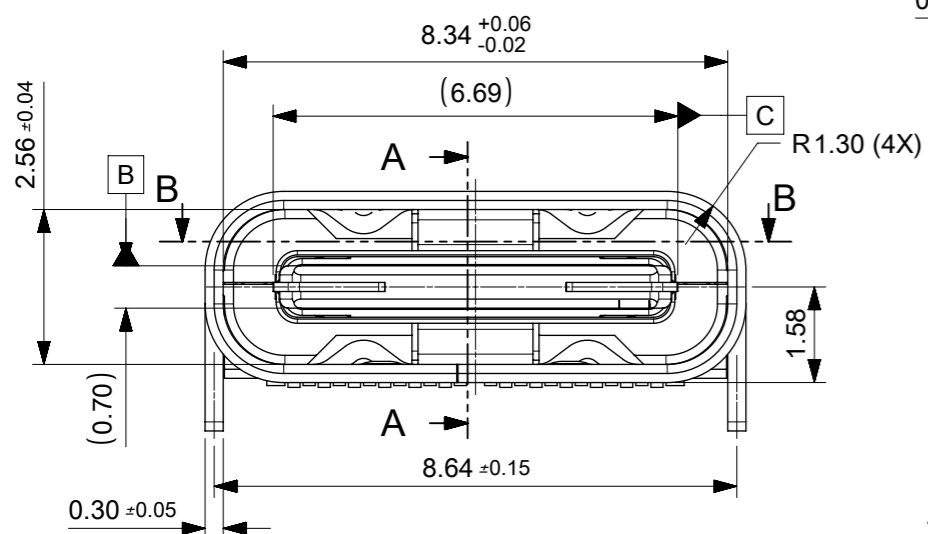
8.94



SECTION A-A

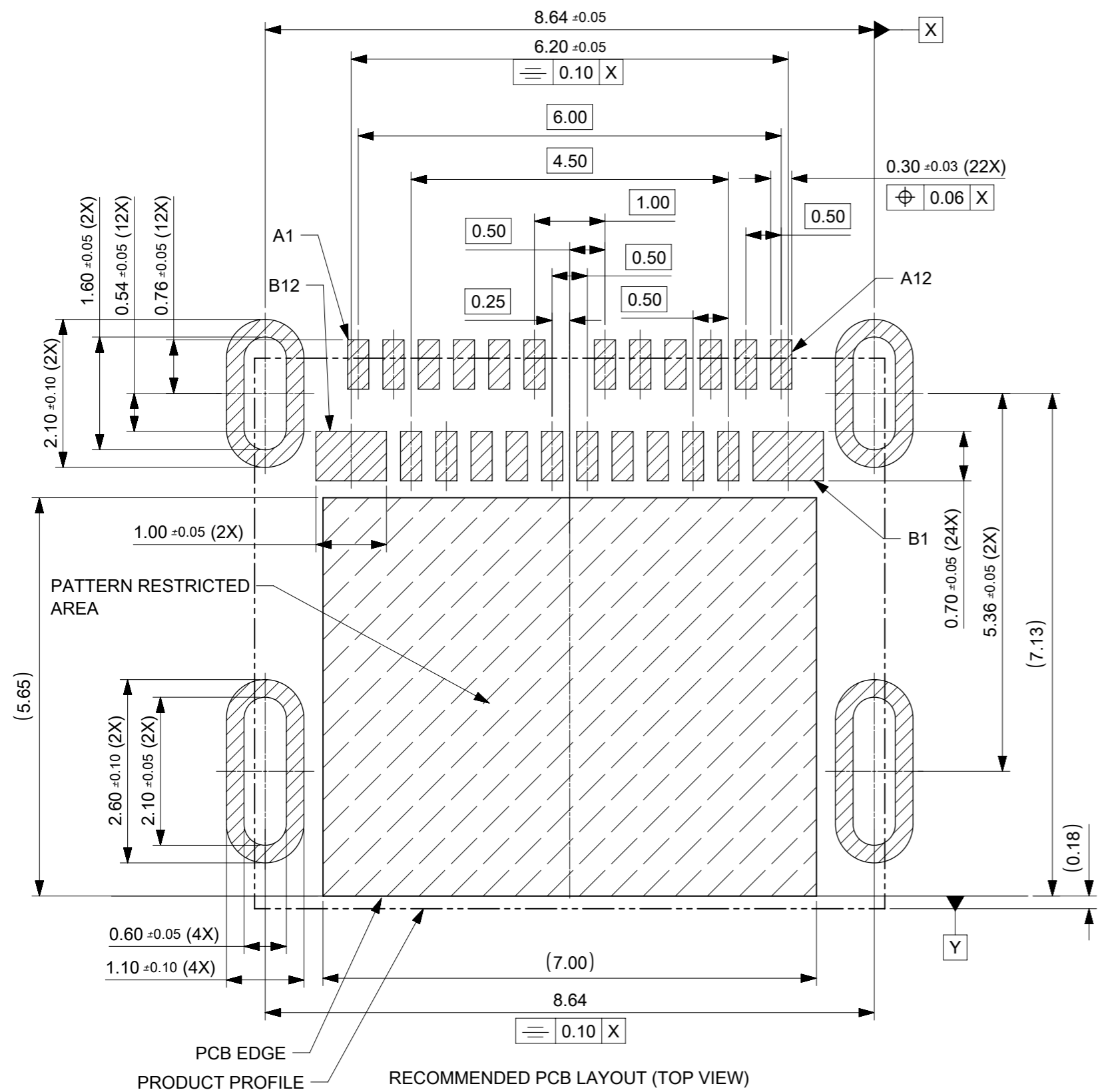


SECTION B-B



PART NO.	DESCRIPTION	L	PACKAGE
1054500001	SEE NOTES 2 (1) FOR CONTACT AREA PLATING	0.80	PK-105450-001
1054500101	SEE NOTES 2 (2) FOR CONTACT AREA PLATING	0.50	
1054500111	SEE NOTES 2 (2) FOR CONTACT AREA PLATING	1.30	
1054500121	SEE NOTES 2 (2) FOR CONTACT AREA PLATING	0.80	1054506666

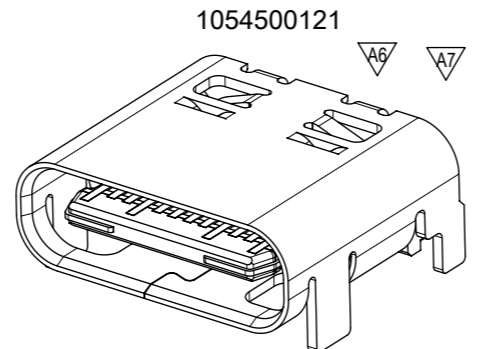
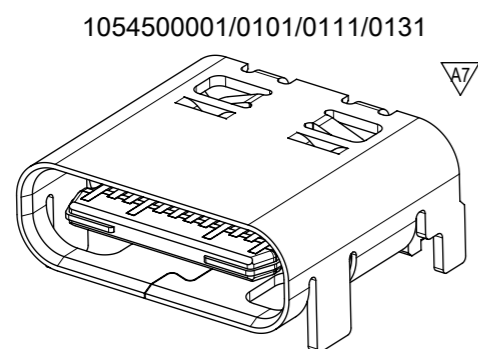
THIS DRAWING CONTAINS INFORMATION THAT IS PROPRIETARY TO MOLEX ELECTRONIC TECHNOLOGIES, LLC AND SHOULD NOT BE USED WITHOUT WRITTEN PERMISSION									
DIMENSION UNITS		SCALE		CURRENT REV DESC:				<b>molex</b>	
mm									
GENERAL TOLERANCES (UNLESS SPECIFIED)				EC NO: 613007					
ANGULAR TOL ± 3.0°				DRWN: FYANG05		2019/03/01		USB C TYPE REC	
4 PLACES ±				CHK'D: RZHANG		2019/03/01		TOP MOUNT SMT TAIL	
3 PLACES ±				APPR: RZHANG		2019/03/01		PRODUCT CUSTOMER DRAWING	
2 PLACES ± 0.2				INITIAL REVISION:					
1 PLACE ± 0.2				DRWN: RZHANG		2015/04/20		DOCUMENT NUMBER	
0 PLACES ±				APPR: AYIN		2015/04/20		SD-105450-001	
DRAFT WHERE APPLICABLE MUST REMAIN WITHIN DIMENSIONS		THIRD ANGLE PROJECTION		DRAWING		SERIES		MATERIAL NUMBER	
		A3-SIZE		105450		CUSTOMER		GENERAL MARKET	
								DOC TYPE DOC PART REVISION	
								PSD 000 A7	
								SHEET NUMBER	
								1 OF 2	



NOTES:

- MATERIAL,
  - HOUSING: HIGH TEMPERATURE THERMAL PLASTIC, GLASS FILLED, BLACK, UL94V-0.
  - TERMINAL: COPPER ALLOY
  - SHELL: STAINLESS STEEL
  - INNER SHELL: STAINLESS STEEL
  - MIDDLE BLADE: STAINLESS STEEL
- PLATING:
  - TERMINAL: CONTACT AREA:
    - 0.76 MICROMETER MIN. GOLD PLATING
    - GOLD FLASH OVER 0.76 MICROMETER MIN. PALLADIUM/NICKEL PLATING
  - SOLDER TAIL: 0.05 MICROMETER MIN. GOLD PLATING
  - UNDER PLATING: 2 MICROMETER MIN. NICKEL PLATING OVERALL
  - SHELL: 1 MICROMETER MIN. SOLDERABLE NICKEL PLATING OVERALL
  - INNER SHELL: CLEANING
  - MIDDLE BLADE: 2MICRON MIN. TIN PLATING ON THE SOLDER TAIL AND 1 MICROMETER NICKEL PLATING OVERALL
- PRODUCT SPEC REFER TO PS-105448-001
- COPLANARITY OF SMT PINS SOLDER TAIL IS 0.10 MAX. BEFORE AND AFTER REFLOW
- T/H SOLDER TAIL POSITION BE CONTROLLED BY GAUGE
- PRODUCT COMPLANT TO ROHS DIRECTIVE 2011/65/EU AND ELV DIRECTIVE 2000/53/EC

PIN ASSIGNMENT												BLADE	SHELL
A1	A2	A3	A4	A5	A6	A7	A8	A9	A10	A11	A12		
GND	TX1+	TX1-	VBUS	CC1	D+	D-	SBU1	VBUS	RX2-	RX2+	GND		
GND	RX1+	RX1-	VBUS	SBU2	D-	D+	CC2	VBUS	TX2-	TX2+	GND	GND	GND
B12	B11	B10	B9	B8	B7	B6	B5	B4	B3	B2	B1		



THIS DRAWING CONTAINS INFORMATION THAT IS PROPRIETARY TO MOLEX ELECTRONIC TECHNOLOGIES, LLC AND SHOULD NOT BE USED WITHOUT WRITTEN PERMISSION

DIMENSION UNITS: mm	SCALE:	CURRENT REV DESC:	<b>molex</b>		
GENERAL TOLERANCES (UNLESS SPECIFIED)		EC NO: 613007	USB C TYPE REC TOP MOUNT SMT TAIL		
ANGULAR TOL ± 3.0°	4 PLACES ±	DRWN: FYANG05 2019/03/01	PRODUCT CUSTOMER DRAWING		
3 PLACES ±	3 PLACES ±	CHK'D: RZHANG 2019/03/01	DOCUMENT NUMBER: SD-105450-001		
2 PLACES ± 0.2	2 PLACES ± 0.2	APPR: RZHANG 2019/03/01	DOC TYPE: PSD	DOC PART: 000	REVISION: A7
1 PLACE ± 0.2	1 PLACE ± 0.2	INITIAL REVISION:	MATERIAL NUMBER: 105450		
0 PLACES ±	0 PLACES ±	DRWN: RZHANG 2015/04/20	CUSTOMER: GENERAL MARKET		
DRAFT WHERE APPLICABLE MUST REMAIN WITHIN DIMENSIONS	THIRD ANGLE PROJECTION	APPR: AYIN 2015/04/20	SHEET NUMBER: 2 OF 2		