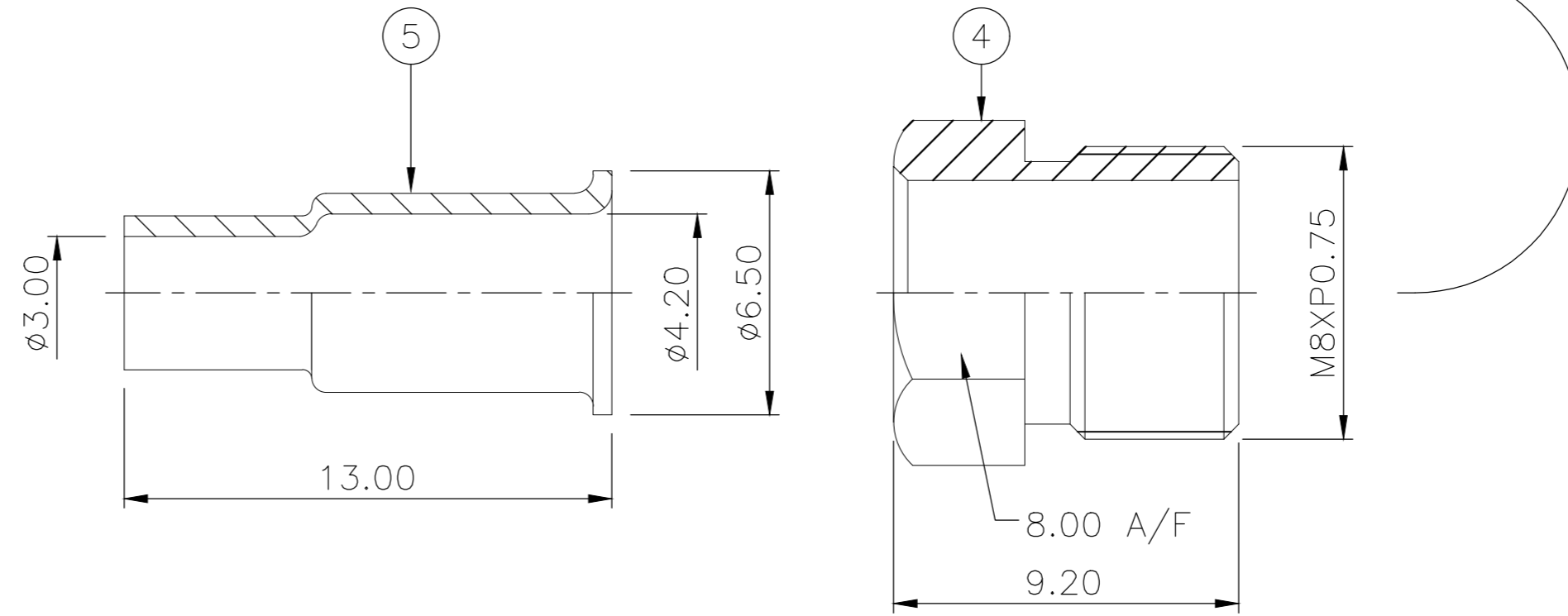
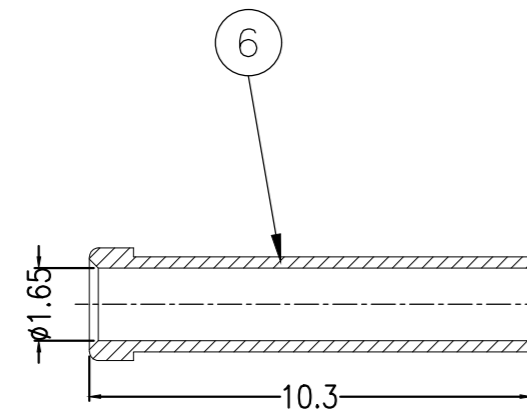
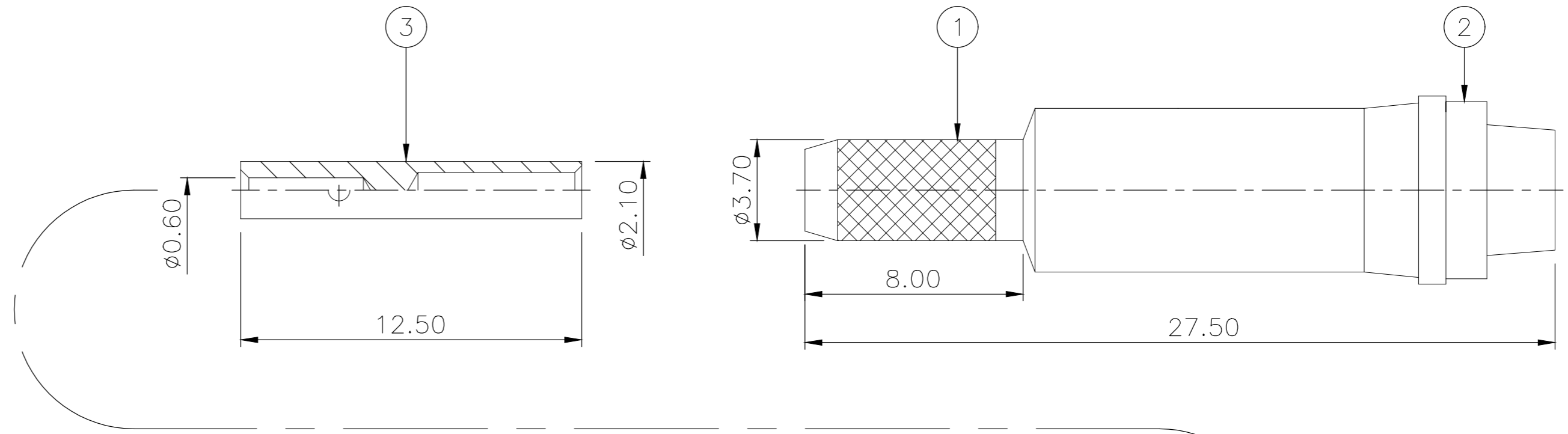


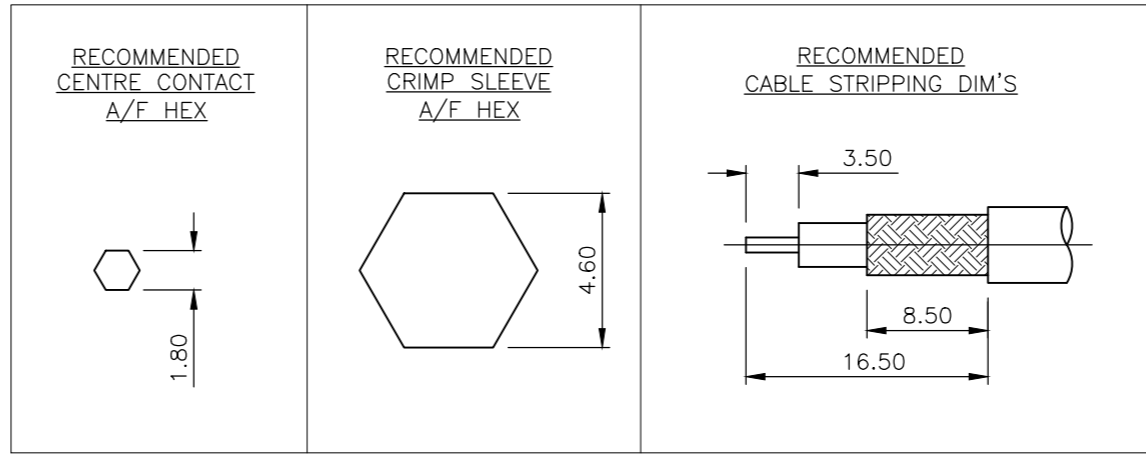
REVISIONS					
P	LTR	DESCRIPTION	DATE	DWN	APVD
E		ECR-19-002238	01FEB2019	RZ	RS

NOTES

- 1 SINGLE PACK IN ACCORDANCE WITH AMP SPEC 107-3275
- 2 50 TRAY PACK IN ACCORDANCE WITH AMP SPEC 107-3275
- 3 SUITABEL CABLE:
 RG174A/U, 188A/U, 316/U, URM95
 DESIGN DATA OF CABLE:
 CONDUCTOR STRANDING
 DESIGN 7X0.16mm
 CORE Ø 0.50mm NOMINAL
 SHIELDING
 DESIGN 16X5XØ0.1±0.01mm
 COVERAGE >95%
 SHIELD Ø 2.05mm NOMINAL
 JACKET
 OUTER Ø 2.6mm NOMINAL
 IF CABLE DO NOT MEET THE SPEC, RETENTION FORCE WILL LESS THAN 85N;
- 4 FOR TECHNICAL DATA REFER TO YOUR LOCAL TE CONNECTIVITY SALES OFFICE
- 5 ALL DIMENSIONS ARE NOMINAL FOR REFERENCE ONLY UNLESS OTHERWISE STATED



ELECTRICAL	MECHANICAL	ENVIRONMENTAL
Impedance (Ohm) _____50_____	Interface Dimension Fig. _____N/A_____	TEMPERATURE RANGE _____ -55°C TO + 85°C _____
Frequency Range (GHz) _____DC to 2GHz_____	Recommended Coupling Torque _____N/A_____	ROHS _____COMPLIANT_____
Voltage Rating (Peak) @ Seq Level 100 V RMS	Force to Engage and Disengage (In/lbs) _____N/A MAX_____	
Insulation Resistance (MIN.) _____5000 M ohms_____	Center Contact Captivation Axial (Lbs) _____N/A_____	
Contact Resistance (Milliohms MAX) Center Contact _____10.0_____	Radial (In/Oz) _____N/A_____	
Outer Contact _____5.0_____	Cable Retention Axial (N) _____85 MINI_____	
Dielectric Withstand Voltage: _____1000 V RMS Max_____	Mating cycles _____500 cycles_____	
Insertion Loss : _____0.4 dB @1.8GHz_____		
VSWR: _____2.0 MAX@1.8GHz (PN: 1-0/6-0)_____		
_____1.3 MAX@1.8GHz (PN: 1-1)_____		
RF leakage: _____N/A_____		
3rd Intermodulation: _____N/A_____		



QTY	1	-	-	Ni 2.5um	BRASS	TUBE	6
	1	1	1	Ni 2.5um	BRASS	FERRULE	5
	1	1	1	Ni 2.5um	BRASS	NUT	4
	1	1	1	Au 0.08um	PHOS BRONZE	CONTACT PIN	3
	1	1	1	-	DELTRIN	INSULATION	2
	1	1	1	Ni 2.5um	BRASS	BODY	1
	1-1	6--0	1--0	PLATING	MATERIAL	DESCRIPTION	ITEM

THIS DRAWING IS A CONTROLLED DOCUMENT.

DWN: J.SANDWELL 25AUG06
 CHK: S.PARLOW 25AUG06
 APVD: F.WHEELER-KING 25AUG06

TE Connectivity Ltd.

FME STRAIGHT JACK CRIMP 50 OHM
 RG174A/U, 188A/U, 316/U, URM95, KX3B, KX22A

SIZE: A2 CAGE CODE: 00779 DRAWING NO: 1337551

WEIGHT: 0.000000

CUSTOMER DRAWING

SCALE: NTS SHEET: 1 of 1 REV: E