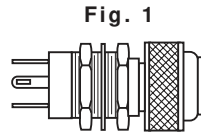
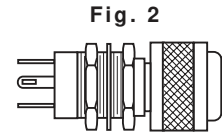


**800 & 801 SERIES FOR 15/32" MOUNTING HOLE**

PART NO.	MIL DESIG.	COLOR	FIG.
800-1030-0331-504	MS25041-6	R	1
800-1030-0332-504	MS25041-7	G	1
800-1030-0333-504	MS25041-8	Y	1
801-1030-0331-504	MS25041-2	R	2
801-1030-0332-504	MS25041-3	G	2
801-1030-0333-504	MS25041-4	Y	2



FLAT PRESS-TO-TEST WITH NON DIMMING LENS CAP

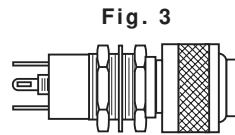


FLAT PRESS-TO-TEST WITH DIMMING LENS CAP

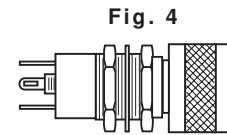
Uses:  
T-1 3/4 MIDGET FLANGE BASE INCANDESCENT LAMP OR BASED LED LAMP

**803 & 804 SERIES FOR 5/8" MOUNTING HOLE**

PART NO.	MIL DESIG.	COLOR	FIG.
803-1710-0331-504	MS25331-6	R	3
803-1710-0332-504	MS25331-7	G	3
803-1710-0333-504	MS25331-8	Y	3
804-1710-0331-504	MS25331-2	R	4
804-1710-0332-504	MS25331-3	G	4
804-1710-0333-504	MS25331-4	Y	4



FLAT PRESS-TO-TEST WITH NON DIMMING LENS CAP

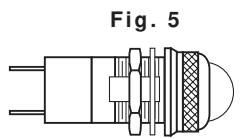


FLAT PRESS-TO-TEST WITH DIMMING LENS CAP

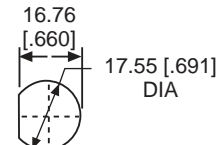
Uses:  
T-3 1/4 MINIATURE BAYONET BASE INCANDESCENT LAMP

**373, 375 & 376 SERIES FOR 11/16" MOUNTING HOLE • WATERTIGHT**

PART NO.*	MIL DESIG.	COLOR	FIG.
373-0410-0131-203	LH76/3, LC14RN3	R	5
375-0410-0131-203	LH76/3, LC17RN3	R	6
376-0410-0131-203	LH76/3, LC18RN3	R	7

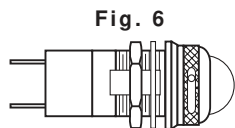


CONVEX, TRANSPARENT LENS CAP



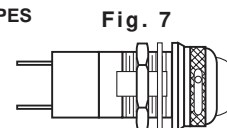
RECOMMENDED PANEL CUTOUT

Uses:  
T-3 1/4 MINIATURE BAYONET BASE INCANDESCENT LAMP OR BASED LED LAMP



CONVEX TRANSPARENT COMPLETE BLACKOUT LENS CAP

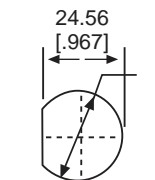
DIMMER TYPES



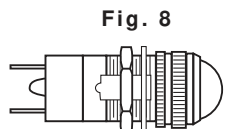
CONVEX TRANSPARENT SEMI BLACKOUT LENS CAP

**378, 379, 380 & 381 SERIES FOR 1" MOUNTING HOLE • WATERTIGHT**

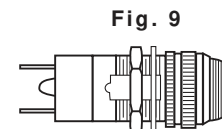
PART NO.*	MIL DESIG.	COLOR	FIG.
378-3402-0131-203	LH80/1, LC21RN3	R	8
379-3402-0531-203	LH80/1, LC22RN3	R	9
380-3402-0131-203	LH80/1, LC23RN3	R	10
381-3402-0131-203	LH80/1, LC24RN3	R	11



RECOMMENDED PANEL CUTOUT

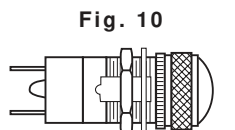


CONVEX TRANSPARENT LENS CAP



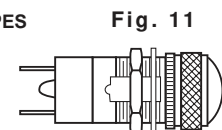
TORPEDO TRANSPARENT LENS CAP

Uses:  
S-6 DOUBLE CONTACT BAYONET BASE INCANDESCENT LAMP



CONVEX TRANSPARENT COMPLETE BLACKOUT LENS CAP

DIMMER TYPES



CONVEX TRANSPARENT SEMI BLACKOUT LENS CAP

\* Cap and bases ordered separately; for complete military part number listing, please see military index on Pages 32 & 33

Neon and incandescent lamp information on Pages 35 and 36.

Based LED lamp information on Pages 37 through 40.

Dimensions in mm [inches]

