

# SL29327A Series



## 1. Features of SL29327A Series:

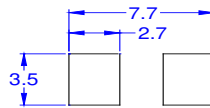
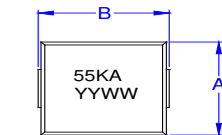
- Ferrite based SMD inductor with lower core loss.
- Inductance range: 55.0 nH to 120.0 nH , custom values are welcomed.
- High current output chokes up to 110.0 Amp with approx. 20% roll off.
- Low profile 8.00 mm Max. height.
- 7.20 x 6.50 mm Foot Print.
- Ideal for Buck Converter, VRM & High Density Board Design.
- Operating frequency of up to 5.0MHz.
- Operating temperature range of -55° C to + 130° C. RoHS & HF compliant.
- T & R Qty's: 600pcs, 13" Reel.

## 2. Electrical Characteristics of SL29327A Series:

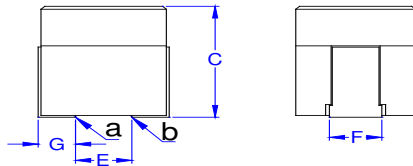
ITG Part Number	OCL <sup>1</sup> (nH) ± 10% or ± 15%	L @ Isat1 <sup>2</sup> (nH) Min.	DCR <sup>3</sup> (mΩ) ± 5.0%	Isat1 <sup>4</sup> (A) @25°C	Isat2 <sup>4</sup> (A) @75°C	Isat3 <sup>4</sup> (A) @100°C	Irms <sup>5</sup> (A) @25°C
SL29327A-55K	55.00 ± 10%	39.60	0.20	110.00	105.00	100.00	63.00
SL29327A-70L	70.00 ± 15%	50.40	0.20	92.00	85.00	78.00	63.00
SL29327A-100L	100.00 ± 15%	72.00	0.20	65.00	60.00	55.00	63.00
SL29327A-120L	120.00 ± 15%	86.40	0.20	54.00	50.00	46.00	63.00

## 3. Mechanical Dimension of SL29327A Series:

A	B	C	E	F	G
Max.	Max.	Max.	Nom.	± 0.20	± 0.20
6.50	7.20	8.00	2.80	3.00	2.10

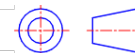


Suggested Pad Layout



Part Marking:  
55KA: 55 is inductance value in nH, K is tolerance,  
A is special code.  
YYWW: YYWW is Date Code.

Third Angle Projection:



### Notes:

1. Open Circuit Inductance (OCL) test condition: 100KHz, 1.0Vrms, 0A<sub>dc</sub> at 25°C.
2. L @ Isat and L @ I<sub>rms</sub> Test condition: 100KHz, 1.0Vrms (T<sub>a</sub>=25°C).
3. The nominal DCR is measured from point "a" to point "b", as shown above on the mechanical drawing (T<sub>a</sub>=25°C).
4. Isat1 , Isat2 & Isat3 : DC current that will cause inductance to drop approximately by 20%.
5. I<sub>rms</sub>: DC current for an approximate temperature rise of 40°C without core loss . Derating is necessary for AC currents. PCB pad layout , trace thickness and width, air-flow and proximity of other heat generating components will affect the temperature rise.
6. It is recommended the part temperature not exceed 130° C under worst case operating conditions as verified in the end application.

## 4. Inductance Characteristics of SL29327A Series (Inductance vs Current):

