



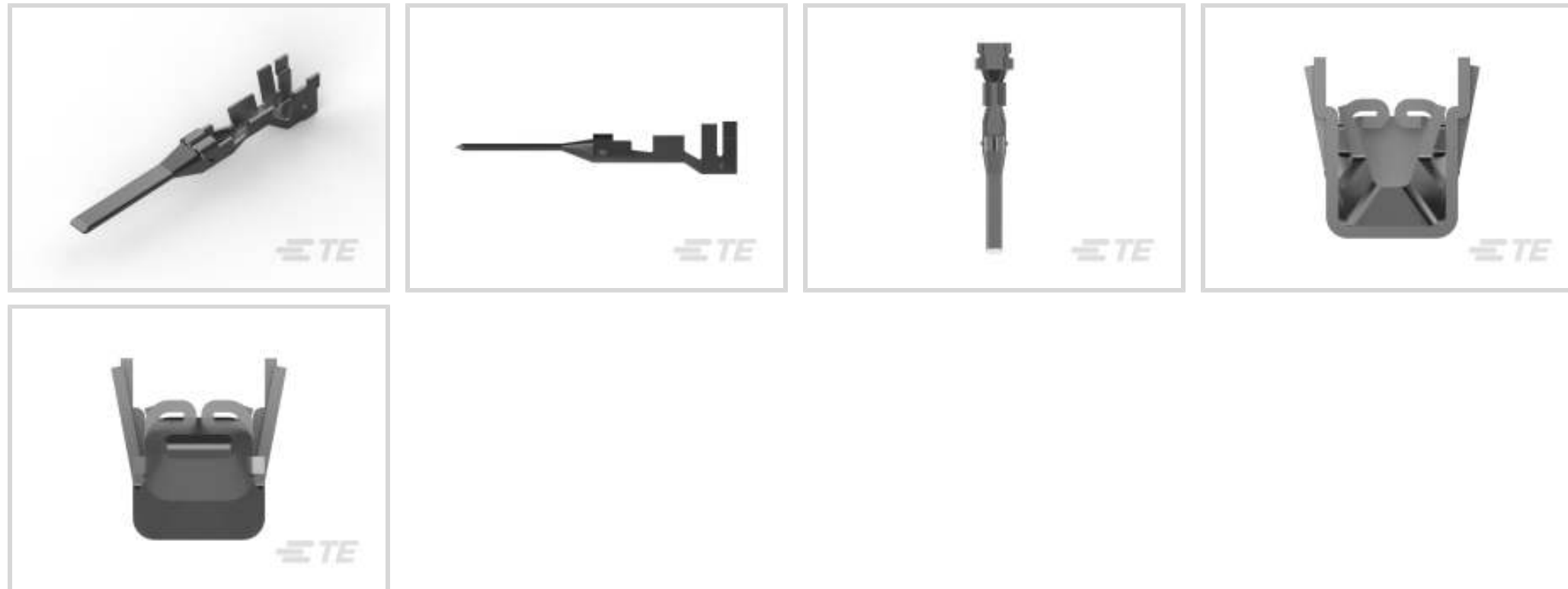
**Power Double Lock**

TE Internal #: 177916-1

Power Contacts, Contact, 300 VAC / 50 VAC, Tin, 26 – 22 AWG  
 Wire Size, .14 – .34 mm<sup>2</sup> Wire Size, Wire & Cable, Crimp, Power,  
 Tab, Power Double Lock

[View on TE.com >](#)

Connectors > Power Connectors > Power Contacts > Power Double Lock Tab



Power Contact Type: **Contact**

Operating Voltage: **50 VAC, 300 VAC**

Contact Mating Area Plating Material: **Tin**

Wire Size: **.14 – .34 mm<sup>2</sup>**

[All Power Double Lock Tab \(4\)](#)

**Features**

**Product Type Features**

Compatible With Discrete Wire Type	Stranded
Power Contact Type	Contact
Connector & Contact Terminates To	Wire & Cable

**Electrical Characteristics**

Operating Voltage	50 VAC, 300 VAC
-------------------	-----------------

**Contact Features**

Contact Mating Area Plating Material	Tin
Contact Current Rating (Max)	14 A
Contact Type	Tab
Contact Retention Within Housing	With
Mating Tab Width	1.5 mm[.06 in]
Mating Tab Thickness	.5 mm[.02 in]
Contact Base Material	Copper Alloy



Contact Mating Area Plating Material Thickness	.8 μm[31.49 μin]
Wire Contact Termination Area Plating Thickness	.8 μm[31.49 μin]
Wire Contact Termination Area Plating Material	Pre-Tin
Wire Contact Termination Area Plating Material Finish	Matte
Contact Orientation	Straight

### Termination Features

Termination Method to Wire & Cable	Crimp
------------------------------------	-------

### Mechanical Attachment

Contact Retention Type Within Housing	Locking Lance
Wire Insulation Support	With

### Dimensions

Wire Size	.14 – .34 mm <sup>2</sup>
Compatible Insulation Diameter Range	1.3 – 2 mm[.051 – .079 in]

### Usage Conditions

Operating Temperature Range	-30 – 105 °C[-22 – 221 °F]
-----------------------------	----------------------------

### Operation/Application

Circuit Application	Power
---------------------	-------

### Packaging Features

Packaging Quantity	5000
Packaging Method	Reel

### Product Compliance

[For compliance documentation, visit the product page on TE.com>](#)

EU RoHS Directive 2011/65/EU	Compliant
EU ELV Directive 2000/53/EC	Compliant
China RoHS 2 Directive MIIT Order No 32, 2016	No Restricted Materials Above Threshold
EU REACH Regulation (EC) No. 1907/2006	Current ECHA Candidate List: JUNE 2023 (235) Candidate List Declared Against: JAN 2023 (233) Does not contain REACH SVHC
Halogen Content	Low Halogen - Br, Cl, F, I < 900 ppm per homogenous material. Also BFR/CFR/PVC Free

Solder Process Capability

Not applicable for solder process capability

Product Compliance Disclaimer

This information is provided based on reasonable inquiry of our suppliers and represents our current actual knowledge based on the information they provided. This information is subject to change. The part numbers that TE has identified as EU RoHS compliant have a maximum concentration of 0.1% by weight in homogenous materials for lead, hexavalent chromium, mercury, PBB, PBDE, DBP, BBP, DEHP, DIBP, and 0.01% for cadmium, or qualify for an exemption to these limits as defined in the Annexes of Directive 2011/65/EU (RoHS2). Finished electrical and electronic equipment products will be CE marked as required by Directive 2011/65/EU. Components may not be CE marked. Additionally, the part numbers that TE has identified as EU ELV compliant have a maximum concentration of 0.1% by weight in homogenous materials for lead, hexavalent chromium, and mercury, and 0.01% for cadmium, or qualify for an exemption to these limits as defined in the Annexes of Directive 2000/53/EC (ELV). Regarding the REACH Regulation, the information TE provides on SVHC in articles for this part number is based on the latest European Chemicals Agency (ECHA) 'Guidance on requirements for substances in articles' posted at this URL: <https://echa.europa.eu/guidance-documents/guidance-on-reach>

## Compatible Parts



TE Part # CAT-P87024-C1701  
STD Temp Power Double Lock Cap



TE Part # 177907-1  
POWER DBL LOCK CAP P/M 3P



TE Part # 177906-1  
POWER DBL LOCK CAP HSG P/M 2P



TE Part # 179463-2  
DBL LOCK CAP F/H 2P RED



TE Part # 179466-1  
AMP POWER DBL LOCK CAP HSG 6P



TE Part # 316769-1  
POWER D/LOCK CAP HSG 1P NATURA



TE Part # 179463-1  
POWER DBL LOCK CAP HSG F/H 2P



TE Part # 1-179466-5  
AMP POWER DBL LOCK CAP HSG 6P Black



TE Part # 1903720-1  
PDL 3.96MM PITCH CAP HSG 12PF



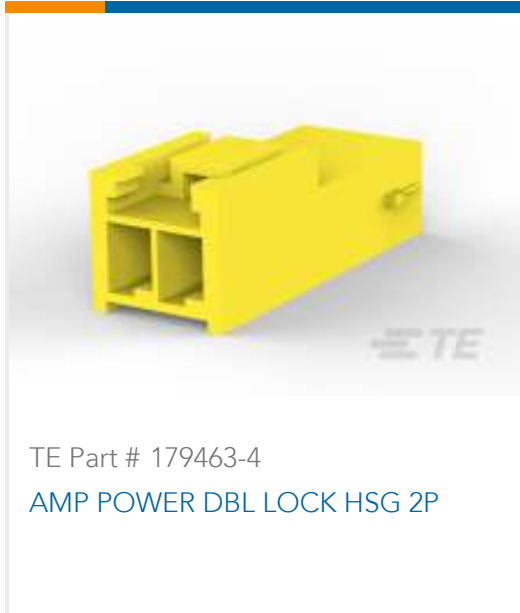
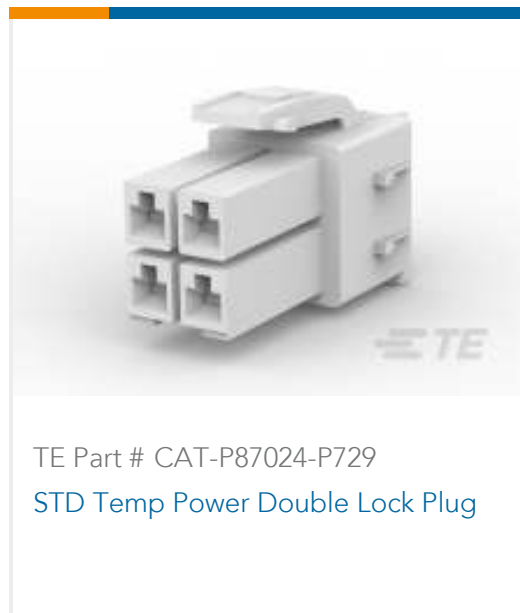
TE Part # 2305570-1  
Strip Terminal Cutter-Side Feed-No Crimp



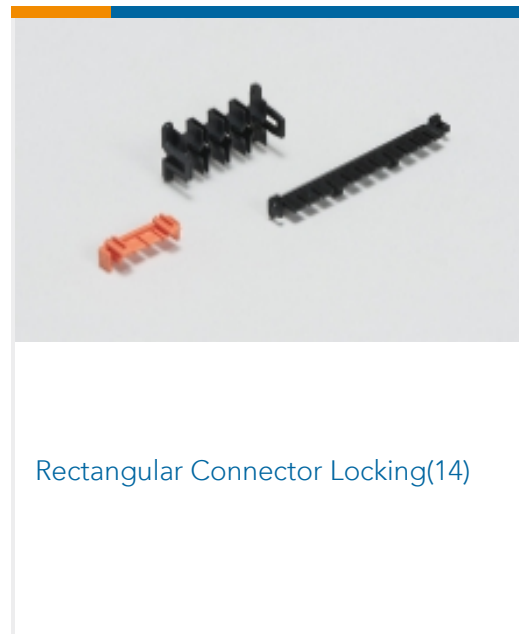
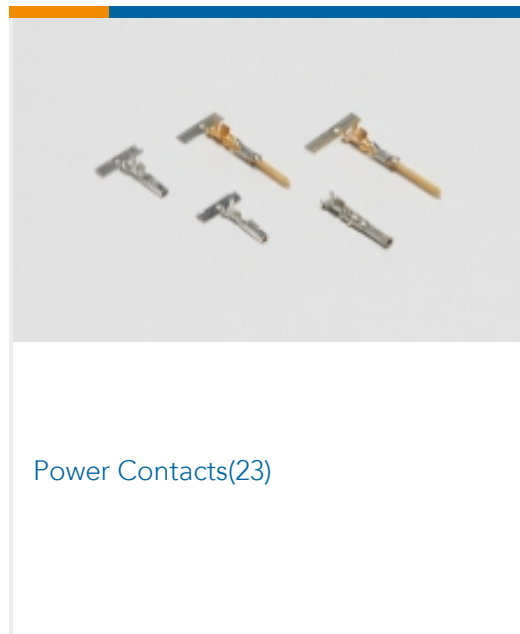
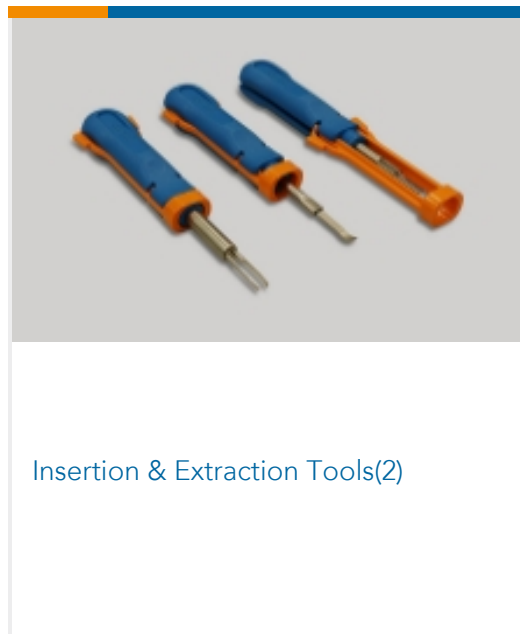
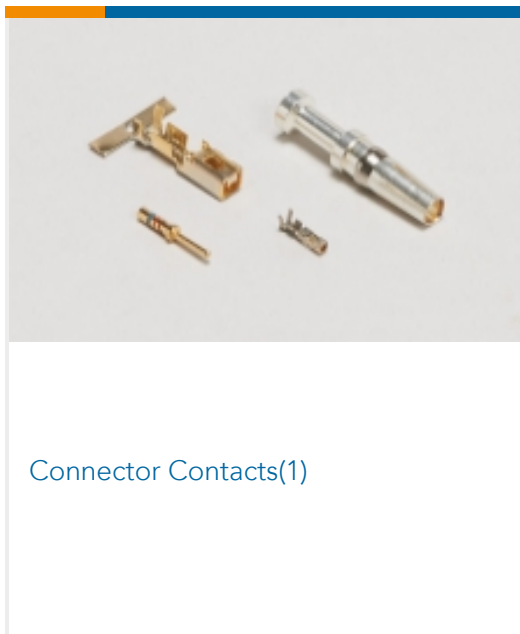
TE Part # CAT-P87024-P729A  
Glow Wire Power Double Lock Plug



TE Part # CAT-P87024-C1701A  
Glow Wire Power Double Lock Cap



Also in the Series | Power Double Lock



Customers Also Bought





TE Part #368572-6  
Glow Wire Power Double Lock Cap



TE Part #5-179464-1  
POWER DBL LOCK CAP HSG F/H 3P (GWT)



TE Part #2-1743068-1  
187 HSG. PL MKII REC. 5mm 3P NAT



TE Part #2-1743216-1  
GAS VALVE 2P HSG GWT



TE Part #2-1743217-1  
GAS VALVE 3P HSG GWT

## Documents

### CAD Files

#### Customer View Model

[ENG\\_CVM\\_CVM\\_177916-1\\_H.2d\\_dxf.zip](#)

English

#### 3D PDF

3D

#### Customer View Model

[ENG\\_CVM\\_CVM\\_177916-1\\_H.3d\\_igs.zip](#)

English

#### Customer View Model

[ENG\\_CVM\\_CVM\\_177916-1\\_H.3d\\_stp.zip](#)

English

By downloading the CAD file I accept and agree to the [Terms and Conditions](#) of use.

### Datasheets & Catalog Pages

[SOFT\\_SHELL\\_PIN\\_AND\\_SOCKET\\_CONNECTORS\\_CATALOG](#)

English

[1773458-5\\_POWER\\_DBL\\_LOCK\\_\(PDL\)\\_CONNECTORS](#)

English

### Product Specifications

[Engineering Report](#)

English

[Engineering Report](#)

English

### Product Environmental Compliance



[MD\\_177916-1\\_09202018639\\_dmtec](#)

English

[MD\\_177916-1\\_09202018639\\_dmtec](#)

English

---

### Instruction Sheets

[Instruction Sheet \(non U.S.\)](#)

English

[AMP POWER DOUBLELOCK CONNECTOR SERIES](#)

English

---

### Agency Approvals

[UL Report](#)

English