



### Main

Range of Product	Altivar
Product or Component Type	EMC input filter
Range Compatibility	Altivar Machine ATV340 Altivar&Nbsp;Process ATV600 Altivar&nbsp;Process ATV900
Product compatibility	Variable speed drive ATV630 wall mount, 37 kW, 380...480 V Variable speed drive ATV630 wall mount, 45 kW, 380...480 V Variable speed drive ATV630 wall mount, 18.5 kW, 200...240 V Variable speed drive ATV630 wall mount, 22 kW, 200...240 V Variable speed drive ATV650 wall mount, 37 kW, 380...480 V Variable speed drive ATV650 wall mount, 45 kW, 380...480 V Variable speed drive ATV930 wall mount, 37 kW, 380...480 V Variable speed drive ATV930 wall mount, 45 kW, 380...480 V Variable speed drive ATV930 wall mount, 18.5 kW, 200...240 V Variable speed drive ATV930 wall mount, 22 kW, 200...240 V Variable speed drive ATV950 wall mount, 37 kW, 380...480 V Variable speed drive ATV950 wall mount, 45 kW, 380...480 V Variable speed drive ATV34030 kW, 380...480 V Variable speed drive ATV34037 kW, 380...480 V
Product Specific Application	Radio interference input filter
Mounting Location	At variable speed drive side
Line Rated Current	100 A
Thermal losses	12.4 W
Phase	Three phase

### Complementary

Electrical connection	Terminal 50 mm <sup>2</sup> AWG 1/0
Maximum motor cable length	492.13 Ft (150 m) shielded motor cable 4 kHz EN/IEC 61800-3 category C2, 380...480 V 984.25 Ft (300 m) shielded motor cable 4 kHz EN/IEC 61800-3 category C3, 380...480 V 492.13 Ft (150 m) shielded motor cable 4 kHz EN/IEC 61800-3 category C2, 200...240 V 984.25 Ft (300 m) shielded motor cable 4 kHz EN/IEC 61800-3 category C3, 200...240 V 164.04 Ft (50 m) shielded motor cable 4 kHz EN/IEC 61800-3 category C1, 200...240 V 164.04 ft (50 m) shielded motor cable 4 kHz EN/IEC 61800-3 category C1, 380...480 V
Maximum earth leakage current	13.9 MA 400 V 50 Hz TN 13.9 mA 400 V 50 Hz TT
Power supply voltage	380...480 V 200...240 V
Tolerance	10 %
Mechanical robustness	Shocks class 3M4 IEC 60721-3-3 Vibrations class 3M4 IEC 60721-3-3

Width	4.72 in (120 mm)
Height	13.39 in (340 mm)
Depth	7.09 in (180 mm)
Net Weight	14.33 lb(US) (6.5 kg)

## Environment

IP degree of protection	IP20mounting side by side IP21with kit VW3A47906
Relative humidity	5...95 % without condensation IEC 61800-5-1
Ambient air temperature for operation	14...122 °F (-10...50 °C) without current derating 122...140 °F (50...60 °C) with current derating 1.5 % per °C)
Ambient Air Temperature for Storage	-40...158 °F (-40...70 °C)
Operating altitude	0...3280.84 ft (0...1000 m) without current derating 3280.84...13123.36 ft (1000...4000 m) with current derating 1 % per 100 m
Standards	EN/IEC 61800-3

## Ordering and shipping details

Category	22000-Temporary Category for ITS Price Promotion
Discount Schedule	I
GTIN	3606480736551
Nbr. of units in pkg.	1
Package weight(Lbs)	22.45 lb(US) (10.184 kg)
Returnability	No
Country of origin	CN

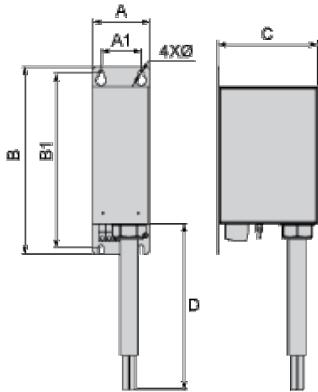
## Packing Units

Unit Type of Package 1	PCE
Package 1 Height	11.22 in (28.5 cm)
Package 1 width	14.76 in (37.5 cm)
Package 1 Length	20.87 in (53 cm)
Unit Type of Package 2	P06
Number of Units in Package 2	4
Package 2 Weight	128.41 lb(US) (58.248 kg)
Package 2 Height	30.31 in (77 cm)
Package 2 width	23.62 in (60 cm)
Package 2 Length	31.50 in (80 cm)

## Offer Sustainability

California proposition 65	WARNING: This product can expose you to chemicals including: Lead and lead compounds, which is known to the State of California to cause cancer and birth defects or other reproductive harm. For more information go to <a href="http://www.P65Warnings.ca.gov">www.P65Warnings.ca.gov</a>
REACH Regulation	 <a href="#">REACH Declaration</a>
REACH free of SVHC	Yes
EU RoHS Directive	Pro-active compliance (Product out of EU RoHS legal scope)  <a href="#">EU RoHS Declaration</a>
Toxic heavy metal free	Yes
Mercury free	Yes
RoHS exemption information	 Yes
China RoHS Regulation	 <a href="#">China RoHS Declaration</a>

Dimensions



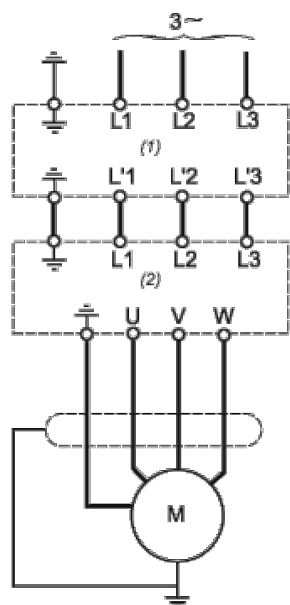
Dimensions in mm

A	B	C	D	A1	B1	Ø
120	340	180	1300	80	322	7

Dimensions in in.

A	B	C	D	A1	B1	Ø
4.7	13.4	7.1	51.2	3.1	12.7	0.28

Recommended Schema



- (1) Filter
- (2) Drive