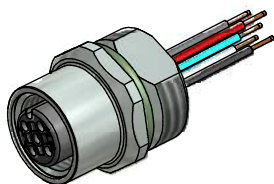


Contact assignment:

- 1) grey (shielding)
- 2) red (+)
- 3) black (-)
- 4) white (CAN H)
- 5) blue (CAN L)



Technical specification:

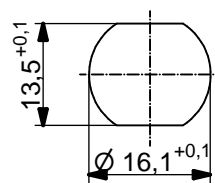
Rated voltage: IEC 61076-2-101	60 V
Current rating: IEC 61076-2-101	4 A at 40°C
Insulation resistance: IEC 60512	>=100 MΩ
Pollution degree: IEC 60664-1	3/2
Degree of protection: IEC 60529	IP 67, in mated condition
Temperature range:	-30°C ... +80°C
Mating cycles: IEC 60512-9a	>=100

Materials:

Contact:	CuZn
Contact plating:	Nickel, gold plated
Contact carrier:	PBT GF, UL 94
Sealing:	FPM
Socket housing:	CuZn, nickel plated
Grouting:	Polyurethane-resin, UL 94

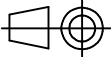
Installation specification:

recommended torque:	1-1,2 Nm
Conec installation tool:	Torque wrench: 36-000200 Insert across flats 17: 36-000230



Minimum wall thickness 1,5mm,
alternativ panel cut-out d=16,1

Part no:	Description:	Pos	Length L:	Wire:
43-01367	SAL - DN - 12 - FK5.3 - 0,5	5	0,5m	AWG 24 PVC, UL
43-xxxxx	SAL - DN - 12 - FK5.3 - ...	5	x	

DO NOT ALTER CAD DRAWING BY HAND Directive 2002/95/EC RoHS compliant	Index: c 15.02.13 MG Ä4631 Data sheet revised, technical specification changed, materials corrected	 dim. in mm	title: Female socket M12x1 with wire, frontmounting, DeviceNet	
	tolerance of wire: L <= 0,5m: L + 20mm L > 0,5m: L + 4%		date	name
	general tolerance: 0 ± 0,50mm 0,0 ± 0,25mm 0,00 ± 0,10mm	drawn	05.11.08	Fromm
	THIS DRAWING MAY NOT BE COPIED OR REPRODUCED IN ANY WAY, AND MAY NOT BE PASSED ON TO A THIRD PARTY WITHOUT WRITTEN PERMISSION. OWNERSHIP AND COPYRIGHT OF CONEC GmbH	appd.	05.11.08	Mankopf

