

## Current transformer - PACT MCR-V2-3015- 60- 200-5A-1 - 2277857

Please be informed that the data shown in this PDF Document is generated from our Online Catalog. Please find the complete data in the user's documentation. Our General Terms of Use for Downloads are valid (<http://phoenixcontact.com/download>)



Window-type current transformer, 200 A AC primary current; 5 A AC secondary current; accuracy class 1; 7.5 VA rated power



### Key Commercial Data

Packing unit	1 STK
Custom tariff number	85043129
Country of origin	Germany

### Technical data

#### Dimensions

Primary round conductor (diameter)	28 mm
Primary round conductor (width)	30 mm
Primary round conductor (height)	15 mm
Primary round conductor (width)	20 mm
Primary round conductor (height)	20 mm
Width	30 mm
Height	80 mm
Depth	60 mm
Width with alternative assembly	60 mm
Height with alternative assembly	80 mm
Depth with alternative assembly	30 mm

#### Ambient conditions

Ambient temperature (operation)	-25 °C ... 40 °C
Ambient temperature (storage/transport)	-25 °C ... 40 °C

# Current transformer - PACT MCR-V2-3015- 60- 200-5A-1 - 2277857

## Technical data

### Input data

Thermal rated short-time current	$I_{th} = 60 * I_n$
Thermal rated continuous current	$I_d = 1.2 * I_n$
Rated surge current	$I_{dyn} = 2.5 * I_{th}$
Rated frequency: Standard converter	50 Hz ... 60 Hz
Rated frequency: Calibrated converter	50 Hz
Surge current limitation factor	FS 5
Rated power	7.5 VA
Primary rated current $I_{pn}$	0 A ... 200 A
Secondary rated current $I_{sn}$	5 A AC

### General

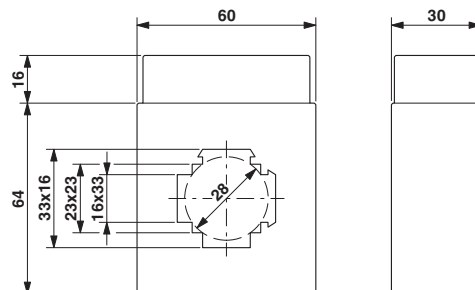
Converter type	Plug-on converters
Accuracy class	1
Can be calibrated	no
Rated insulation voltage	1 kV (Phase/neutral conductor)
Standards/regulations	EN 50178
	EN 61869
Color	black
Housing material	WELLAMID 6600-PA66-GV 20 HWV0CP

### Standards and Regulations

Standards/regulations	EN 50178
	EN 61869

## Drawings

Dimensional drawing



# Current transformer - PACT MCR-V2-3015- 60- 200-5A-1 - 2277857

## Classifications

### eCl@ss

eCl@ss 4.0	27210902
eCl@ss 4.1	27210902
eCl@ss 5.0	27210902
eCl@ss 5.1	27210902
eCl@ss 6.0	27210902
eCl@ss 7.0	27210902
eCl@ss 8.0	27210902
eCl@ss 9.0	27210902

### ETIM

ETIM 2.0	EC001505
ETIM 3.0	EC001505
ETIM 4.0	EC002048
ETIM 5.0	EC002048

### UNSPSC

UNSPSC 6.01	30211501
UNSPSC 7.0901	39121019
UNSPSC 11	39121006
UNSPSC 12.01	39121006
UNSPSC 13.2	39121006

## Approvals

### Approvals

---

Approvals

EAC

---

Ex Approvals

---

### Approval details

EAC EAC-Zulassung
-------------------

## Current transformer - PACT MCR-V2-3015- 60- 200-5A-1 - 2277857

### Accessories

#### Accessories

#### Mounting material

##### Mounting material - PACT-FAST-MNT-W16-L65 - 2276641



The transformer quick-action mechanism enables the lightning-fast mounting of PACT current transformers on the power rail. The installation can be completed easily by hand without the use of tools. Fixing pins: 65 mm, holding latches: 16 mm

---

##### Mounting material - PACT-FAST-MNT-W16-L40 - 2276638



The transformer quick-action mechanism enables the lightning-fast mounting of PACT current transformers on the power rail. The installation can be completed easily by hand without the use of tools. Fixing pins: 40 mm, holding latches: 16 mm