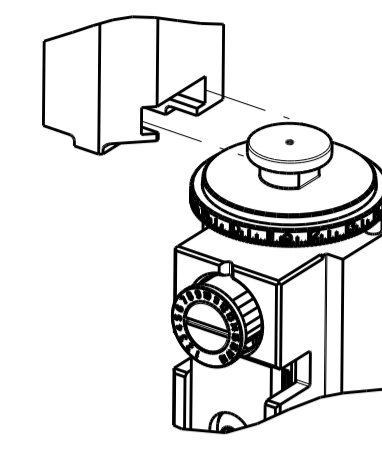


Table with 4 columns: PART NUMBER, REVISION, DESCRIPTION, FEED TYPE. Rows include part numbers like 2266785-1 and descriptions like FINE CRIMP HEIGHT ADJUST.

ATLANTIC VERSION TERMINATOR INTERFACE ADAPTER



APPLICATOR DATA table with columns CRIMP, WIRE, INSUL, APPLICATOR INSTRUCTIONS.

TERMINAL DATA: Molex TERMINAL MOLEX CRIMP SPECIFICATION table with columns WIRE STRIP LENGTH, INSULATION DIAMETER RANGE.

TERMINAL APPLICATION SPECIFICATION table with columns TE TERMINAL, MoLEx TERMINAL, TE TERMINAL, MoLEx TERMINAL.

TERMINALS APPLIED table with columns TE TERMINAL, MoLEx TERMINAL, TE TERMINAL, MoLEx TERMINAL.

WIRE SIZE table with columns WIRE SIZE, CRIMP HEIGHT mm [INCH], CRIMP HEIGHT REFERENCE SETTING.

- RECOMMENDED SPARE PARTS
- REFER TO SUPPLIED INSTRUCTION SHEET FOR CLEANING, LUBRICATION AND STORAGE OF APPLICATOR.
- APPLY PART NUMBER 2-23419-6 LOCTITE TO THREADS OF ITEM 242.
- CRIMP HEIGHT REFERENCE SETTING WAS THE SETTING USED WHEN THE APPLICATOR WAS QUALIFIED AT THE FACTORY. ADJUSTMENT MAY BE NECESSARY WHEN RUNNING APPLICATOR IN THE FIELD.
- UNLESS SPECIFIED OTHERWISE TORQUE VALUES SHALL BE USED PER DOCUMENT, 101-35000.

\*WARNING ON INSTALLATION, SET WIRE DISC TO CRIMP HEIGHT REFERENCE SETTING FOR LARGEST WIRE SIZE. CRIMP HEIGHT REFERENCE SETTINGS GREATER THAN THE VALUE SHOWN MAY CAUSE DAMAGE TO THE CRIMP TOOLING, REFER TO THE INSTRUCTION SHEET FOR PROPER SETUP AND ADJUSTMENTS.

ATLANTIC VERSION Shown on sheets 1 of 4 & 2 of 4 (Pacific version shown on sheets 3 of 4 & 4 of 4)

REVISIONS table with columns REV, LTR, DESCRIPTION, DATE, DWN, APVD.

Main BOM table with columns QTY, UOM, PART NO, DESCRIPTION, ITEM NO. Lists various components like SCR, SKT HD CAP, FENCE, FEED CAM, etc.

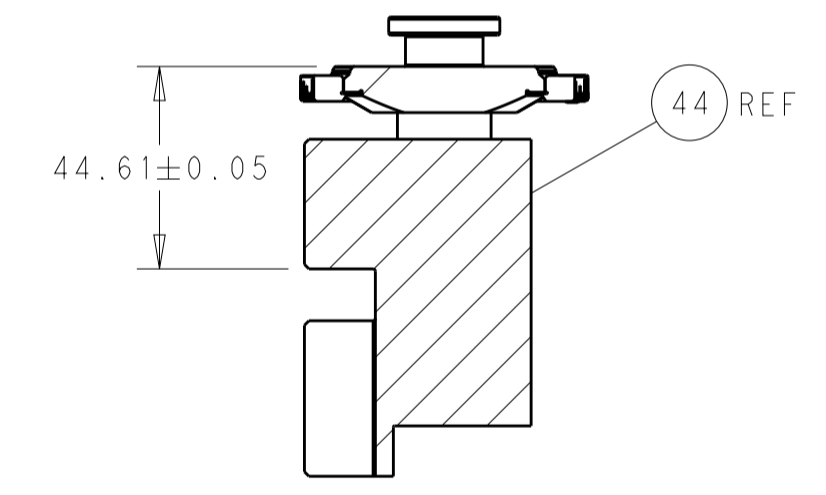
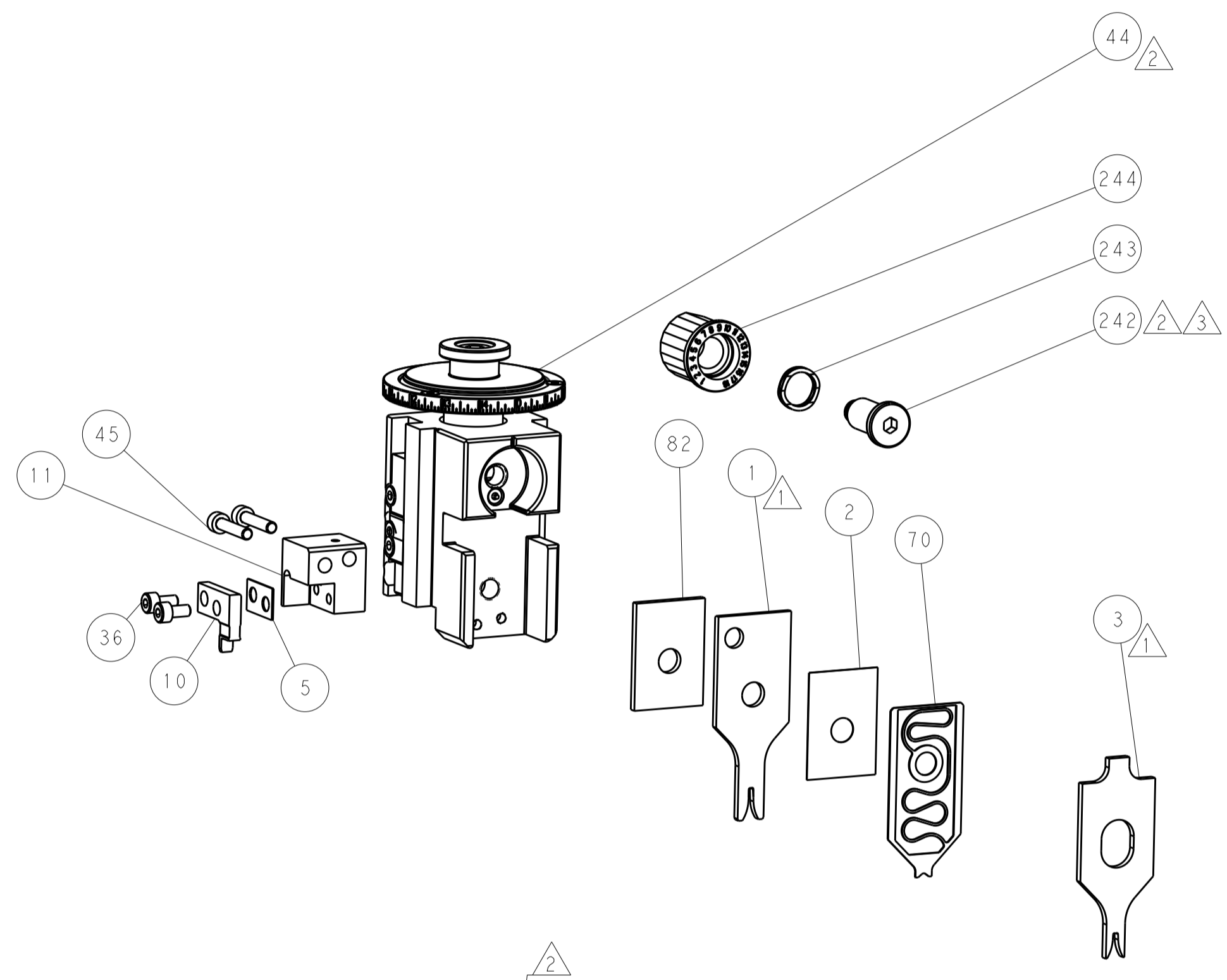
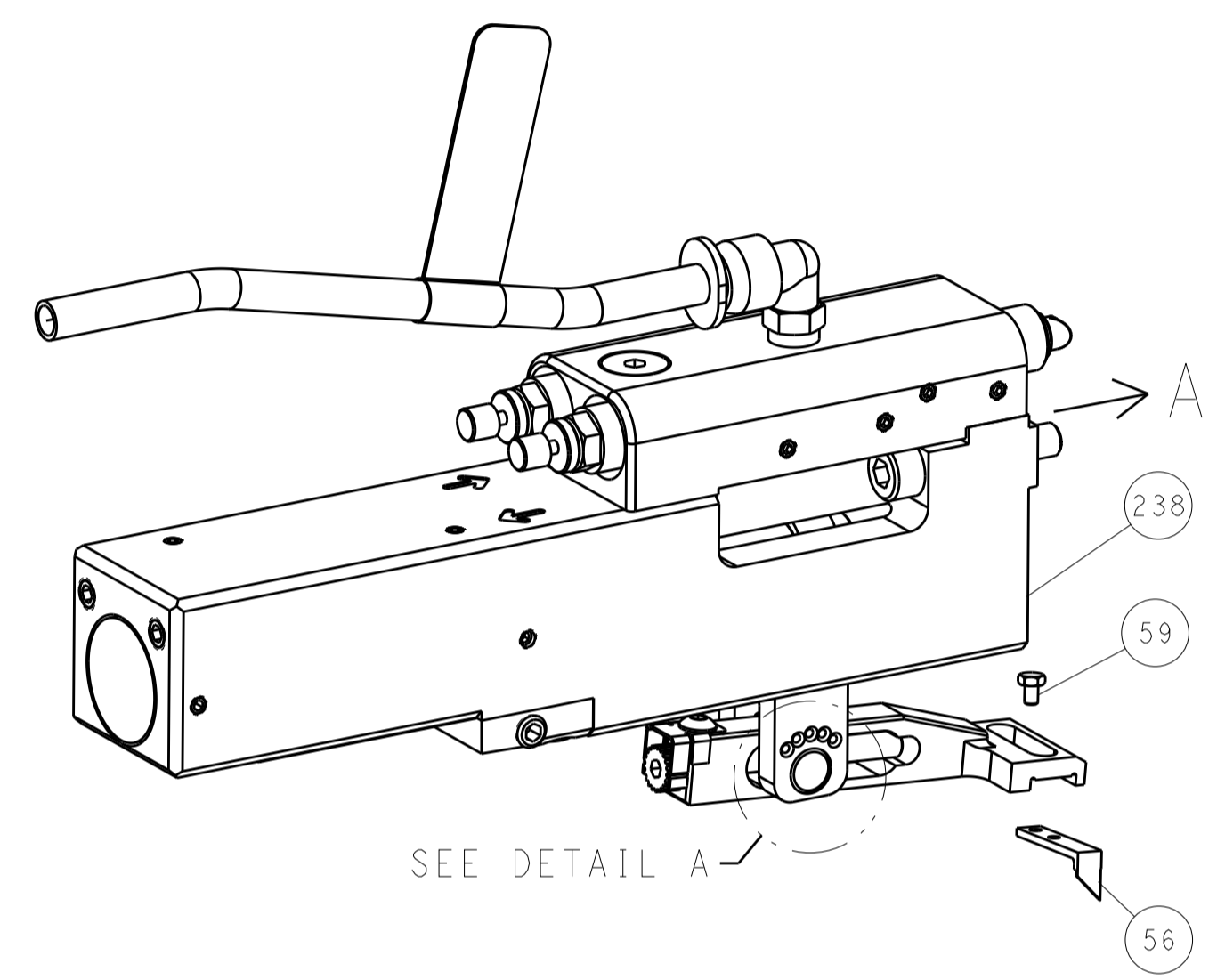
Technical drawing footer including DIMENSIONS, TOLERANCES, MATERIAL, FINISH, WEIGHT, SCALE, SHEET 1 OF 4, and CUSTOMER ACCESSIBLE PRODUCTION DRAWING.

LOC	DIST	REVISIONS					
A	66	P	LTN	DESCRIPTION	DATE	DWN	APVD
		-		SEE SHEET 1	-	-	-

# FEED TYPE MECHANICAL

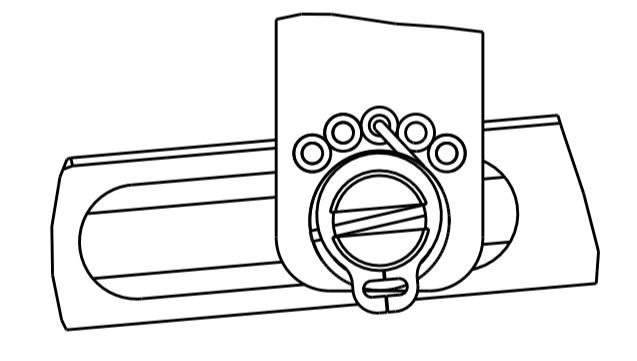


# PNEUMATIC

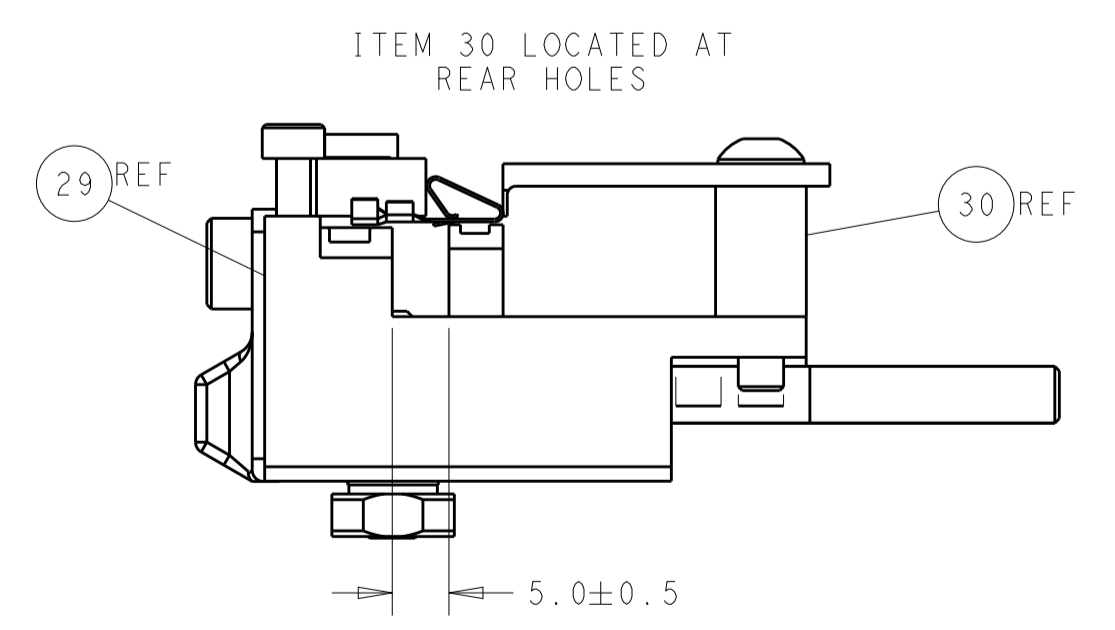
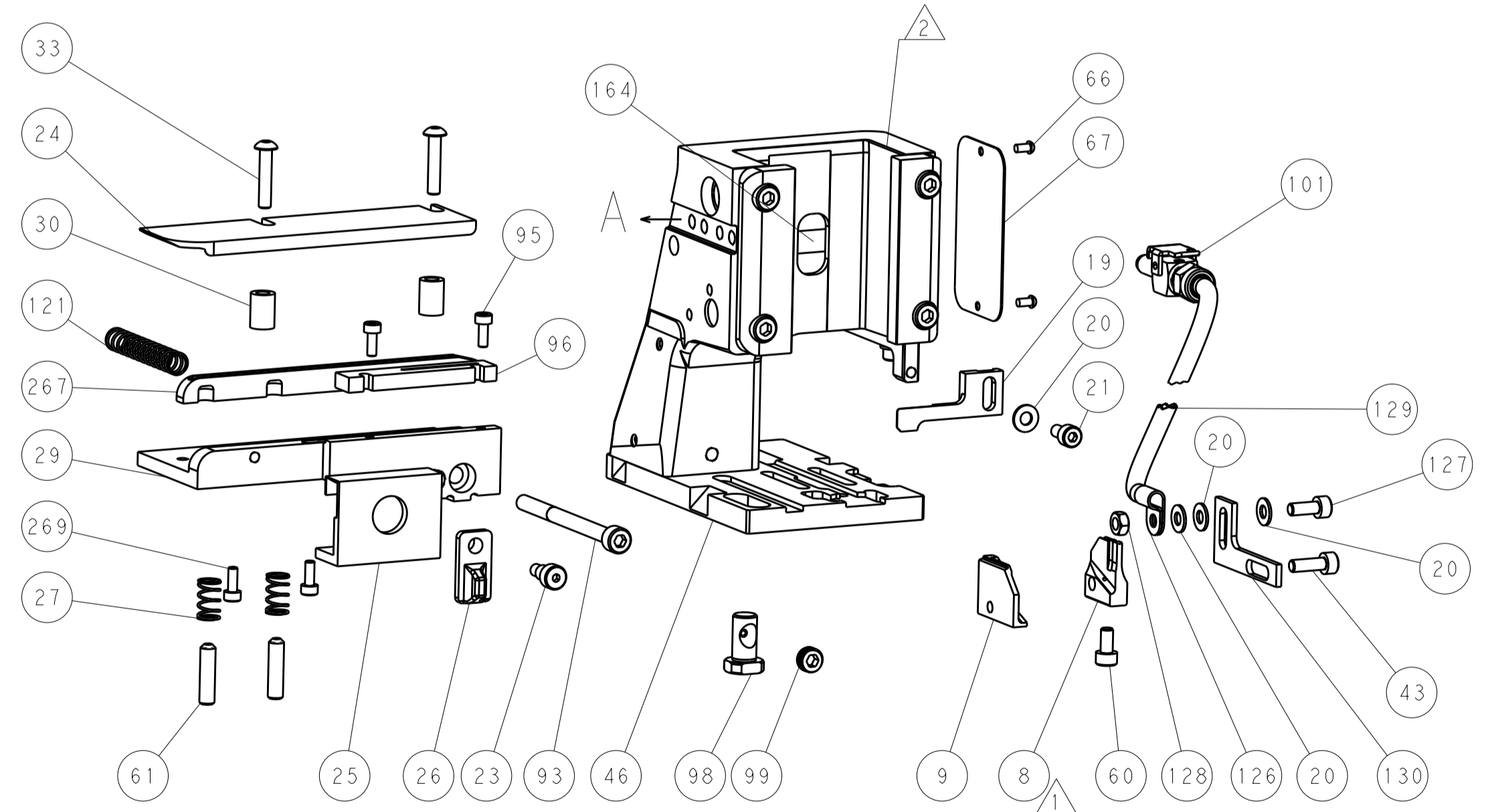


HOLDDOWN SET-UP

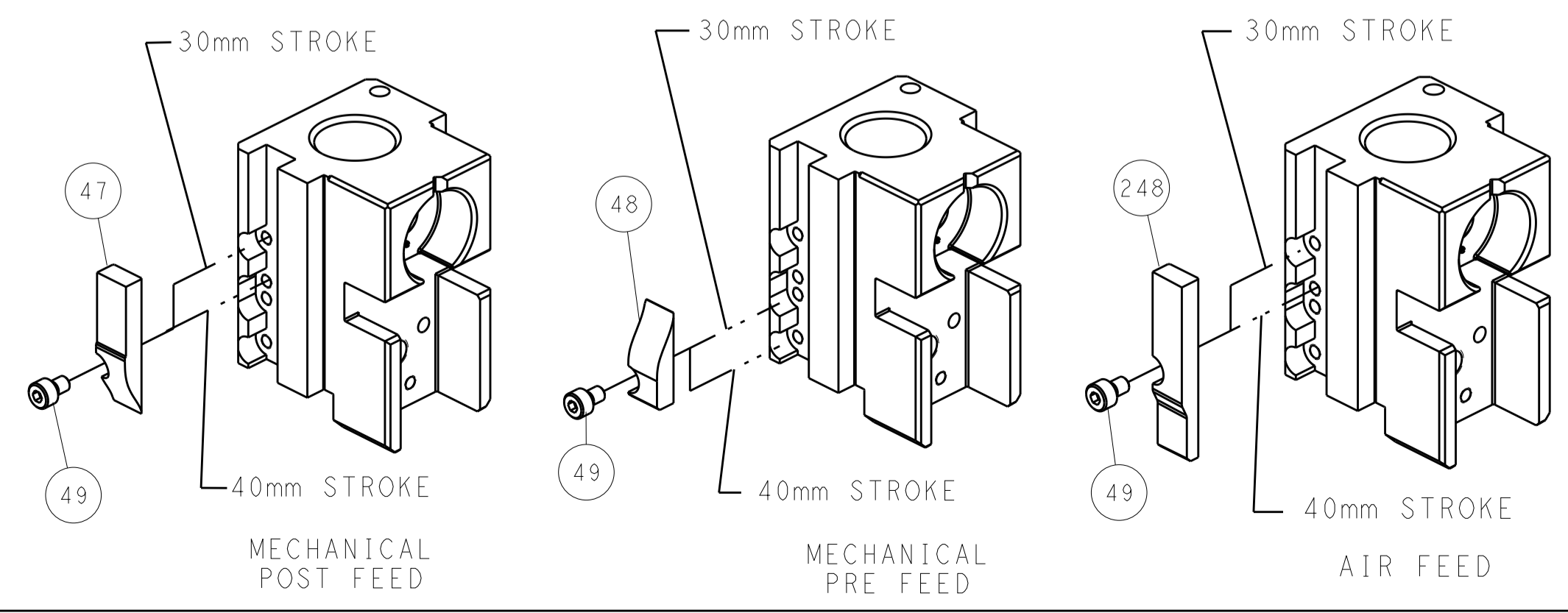
# FEED SPRING SETTING POSITION (SHOWN FROM REAR SIDE)



DETAIL A



# CAM POSITIONS



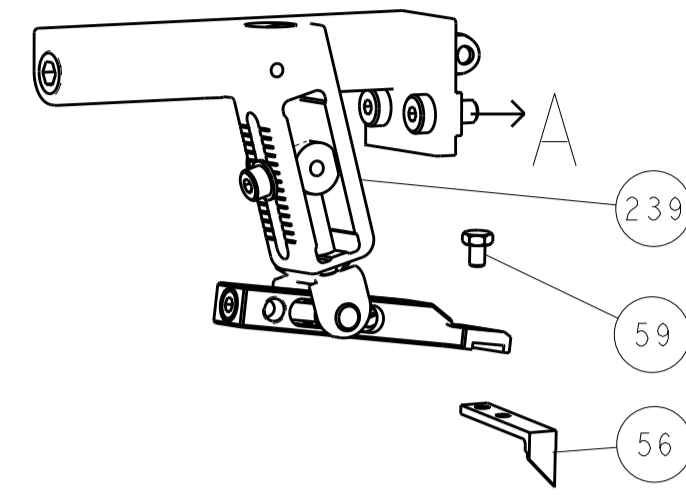
**ATLANTIC VERSION**  
 Shown on sheets 1 of 4 & 2 of 4  
 (Pacific version shown on sheets 3 of 4 & 4 of 4)

<small>THE INFORMATION CONTAINED HEREON IS UNCLASSIFIED EXCEPT WHERE SHOWN OTHERWISE. IT IS SUBJECT TO CHANGE AND WITHOUT WARRANTY OF ANY KIND. THE USER SHALL BE RESPONSIBLE FOR VERIFYING THE LATEST REVISION.</small>		DWN: B. WEAVER 13MAY2015 CHK: G. BAILEY 13MAY2015 APVD: G. BAILEY 13MAY2015	TE Connectivity Harrisburg, PA 17105-3608
DIMENSIONS: mm TOLERANCES UNLESS OTHERWISE SPECIFIED: 0 PLC ± 1 PLC ± 2 PLC ± 3 PLC ± 4 PLC ± ANGLES ±		NAME: Ocean Side Feed Applicator SIZE: A1 CAGE CODE: 00779 DRAWING NO: C-2266785	RESTRICTED TO: - SCALE: 1:2 SHEET: 2 of 4 REV: C
MATERIAL: - FINISH: -		WEIGHT: - Customer Accessible Production Drawing	SHEETS 3 & 4 ARE NOT REQUIRED FOR ATLANTIC VERSION

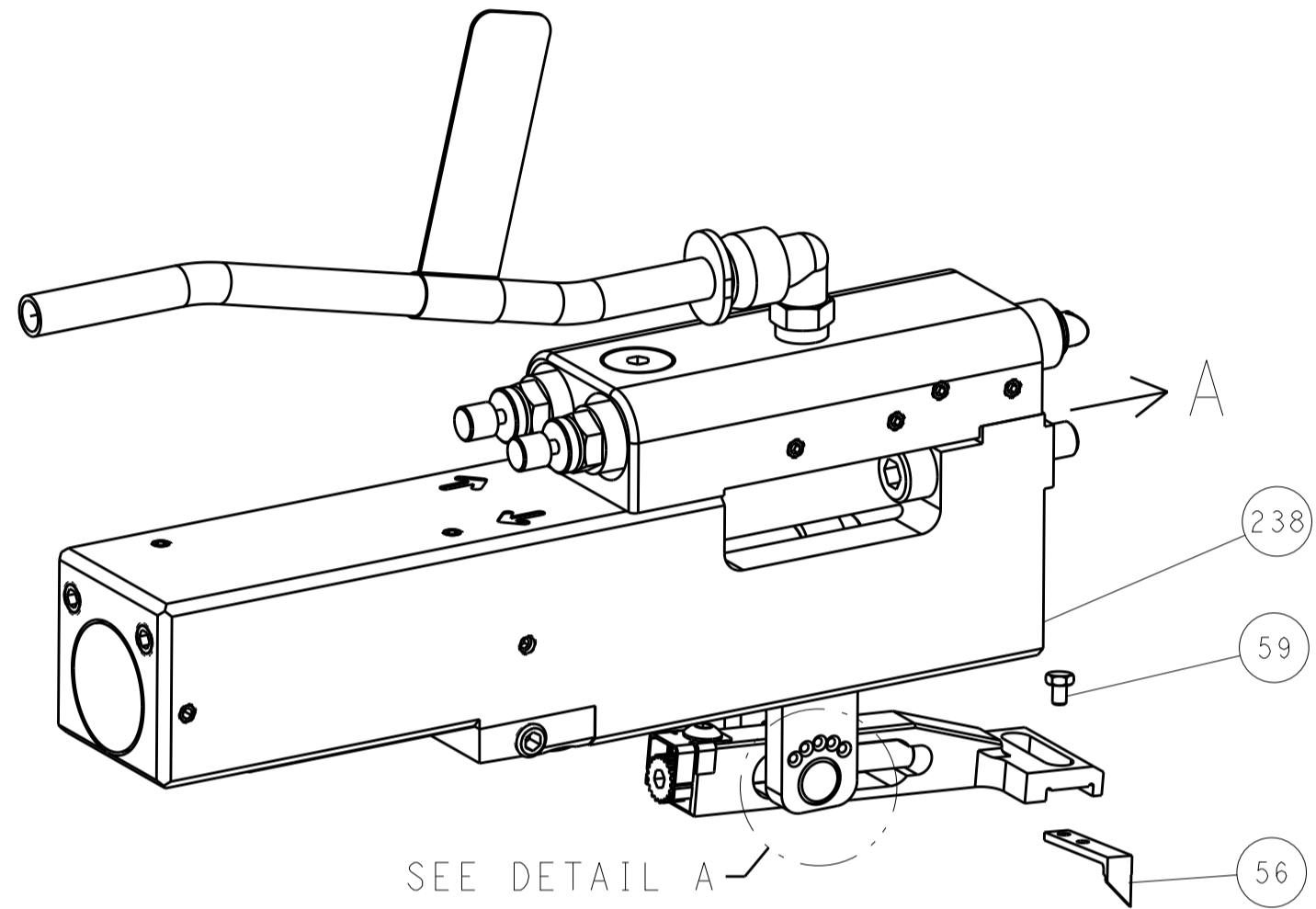


REVISONS		DATE	OWN	APVD
LOC	DIST			
A	66			
P	LYN			
DESCRIPTION				
- SEE SHEET 1				

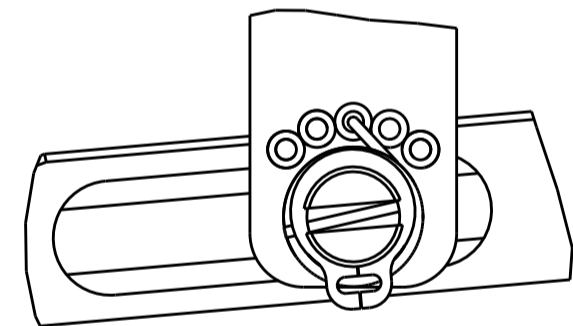
# FEED TYPE MECHANICAL



# PNEUMATIC

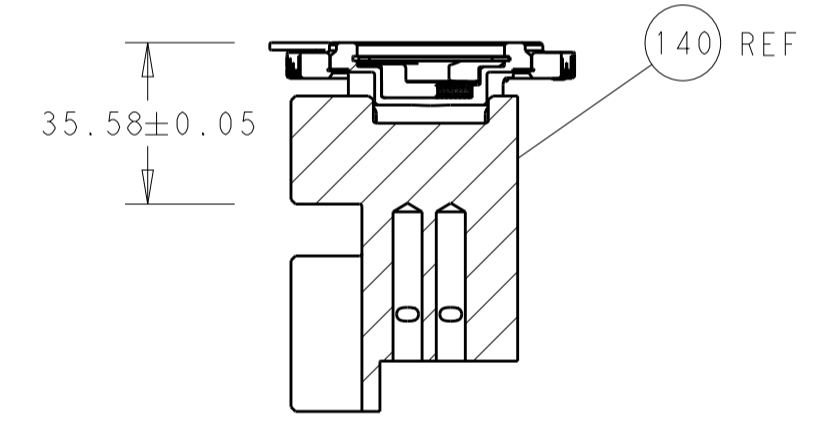
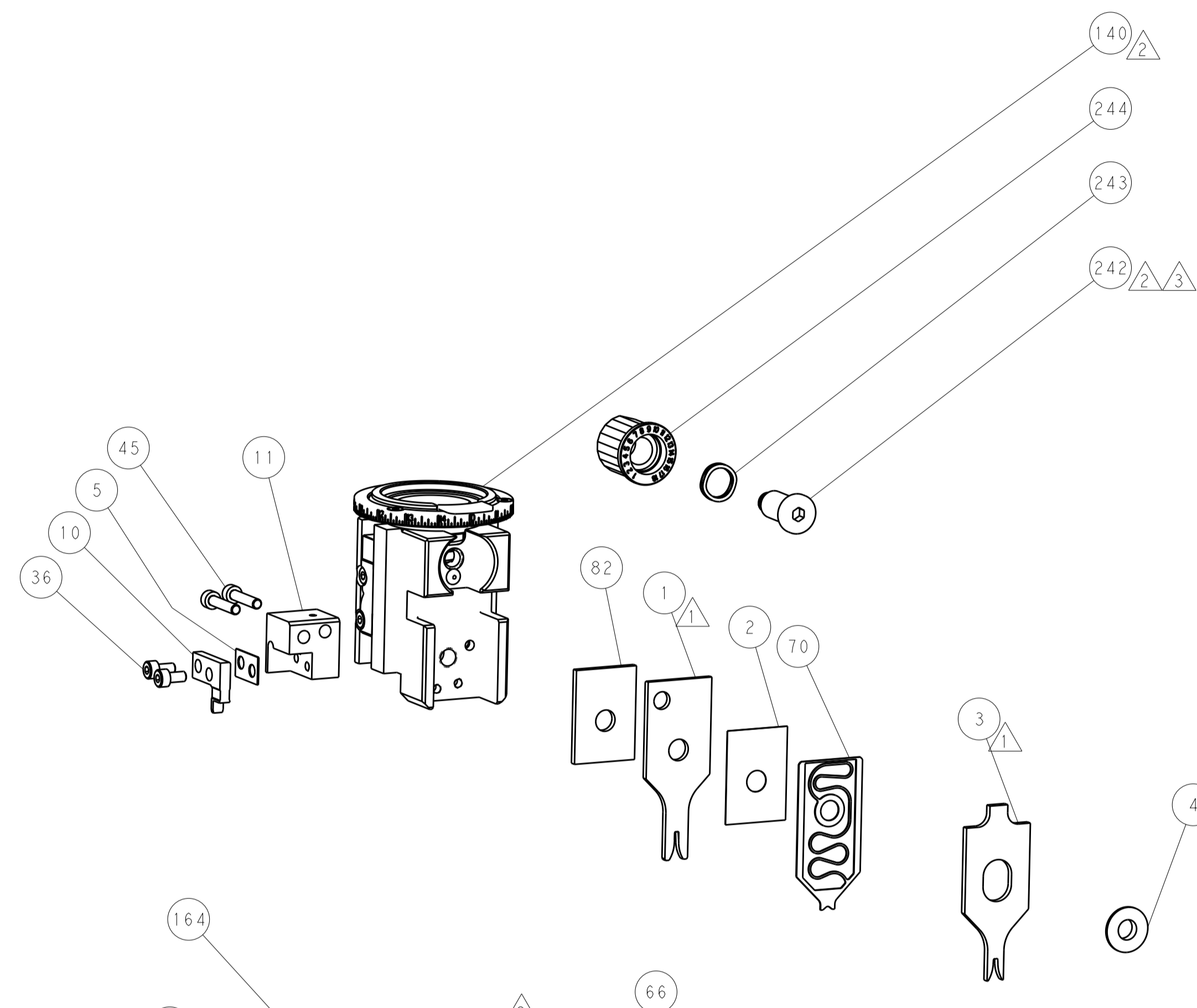
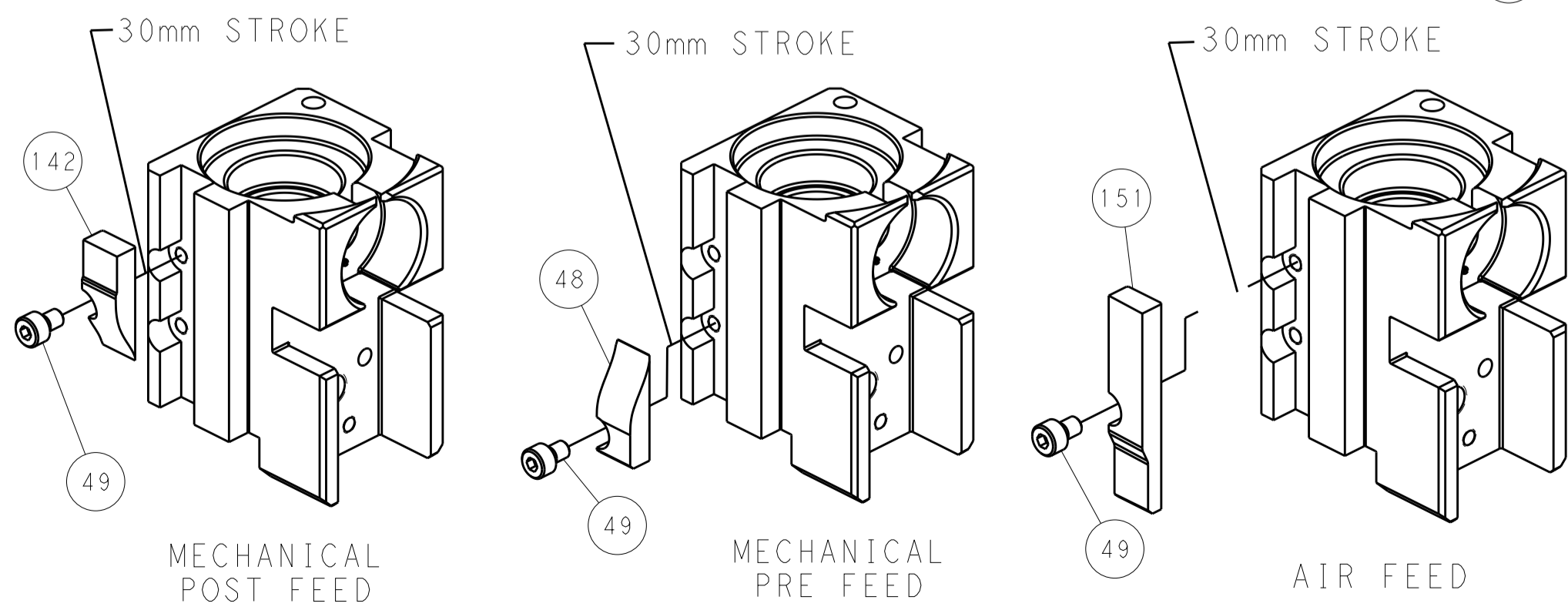


# FEED SPRING SETTING POSITION (SHOWN FROM REAR SIDE)

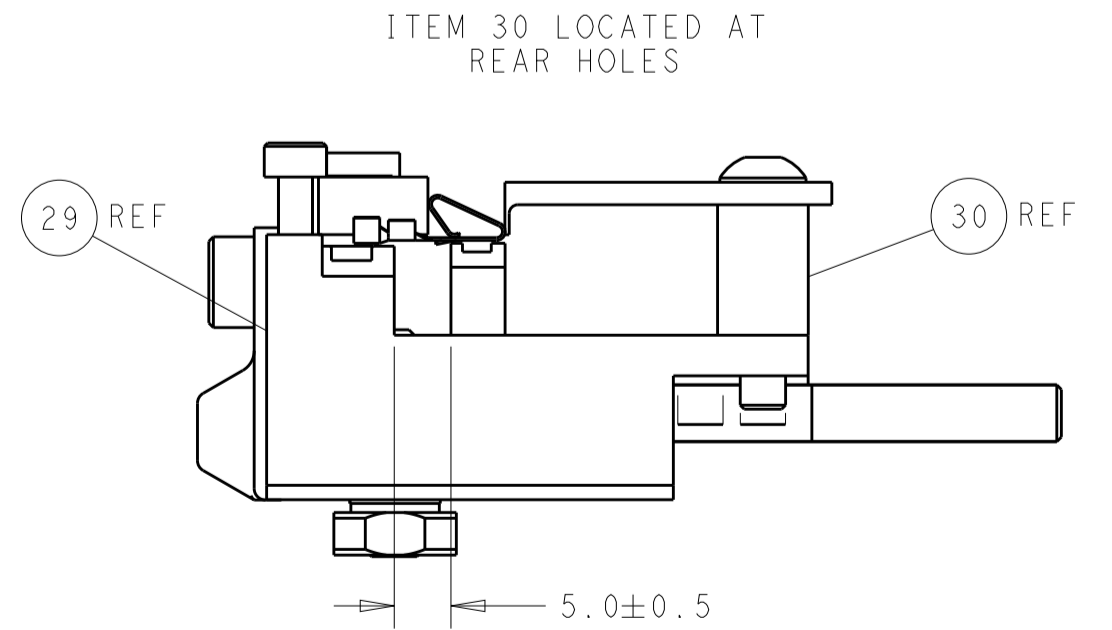


DETAIL A

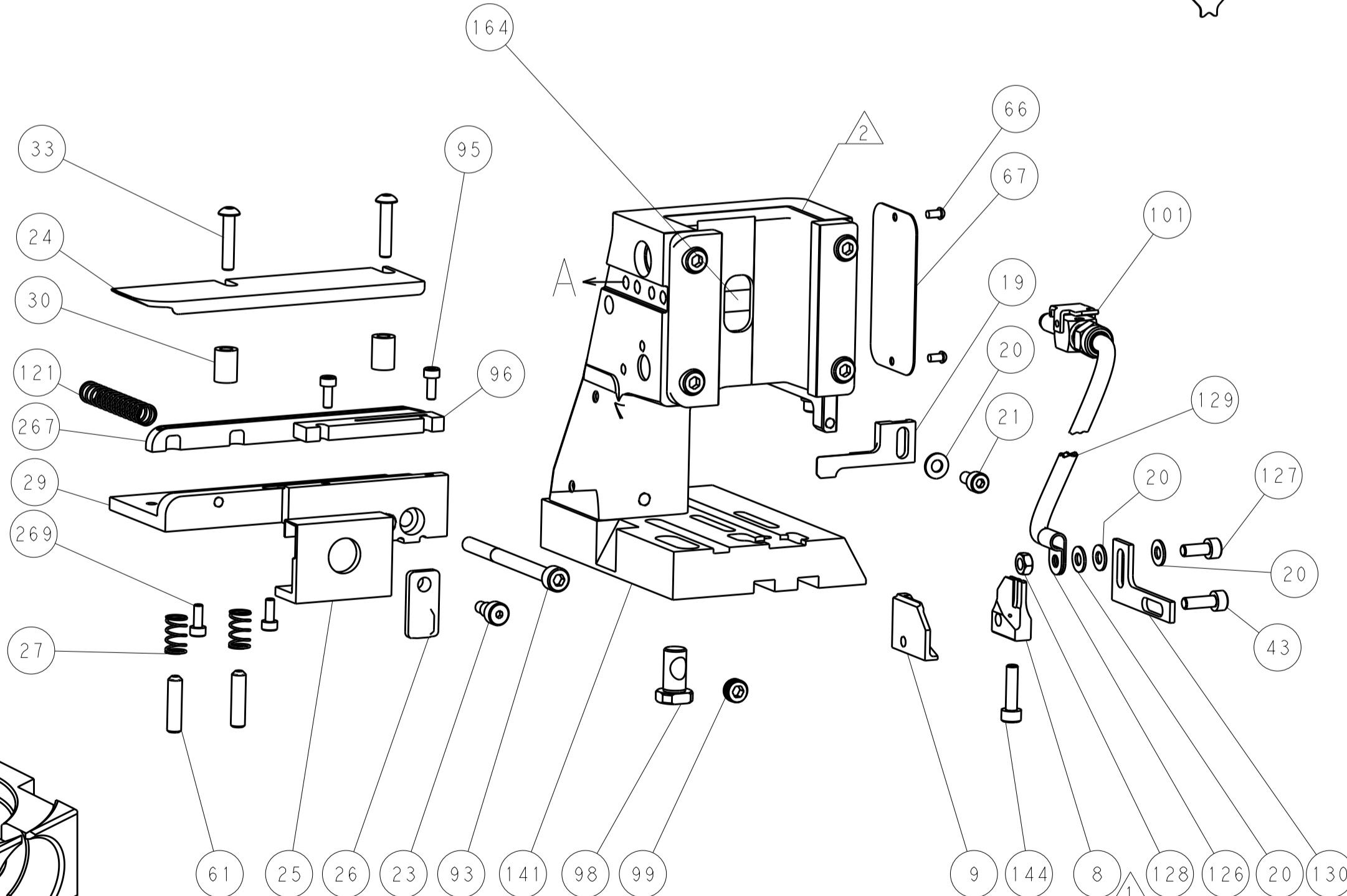
# CAM POSITIONS



HOLDDOWN SET-UP



ITEM 30 LOCATED AT REAR HOLES



**PACIFIC VERSION**  
 Shown on sheets 3 of 4 & 4 of 4  
 (Atlantic version shown on sheets 1 of 4 & 2 of 4)

DIMENSIONS:		TOLERANCES UNLESS OTHERWISE SPECIFIED:		DWN: B. WEAVER 13MAY2015		STE TE Connectivity	
mm	0 PLC ±	1 PLC ±	2 PLC ±	3 PLC ±	4 PLC ±	5 PLC ±	Harrisburg, PA 17105-3608
MATERIAL:		FINISH:		CHK: G. BAILEY 13MAY2015		NAME: Ocean Side Feed Applicator	
				APVD: G. BAILEY 13MAY2015		SIZE: CAGE CODE: DRAWING NO: A1 00779 ©=2266785	
				PRODUCT SPEC:		RESTRICTED TO:	
				APPLICATION SPEC:		Customer Accessible Production Drawing	
				WEIGHT:		SCALE: 1:2 SHEET 4 OF 4 REV C	
				ANGLES:		SHEETS 1 & 2 ARE NOT REQUIRED FOR PACIFIC VERSION	