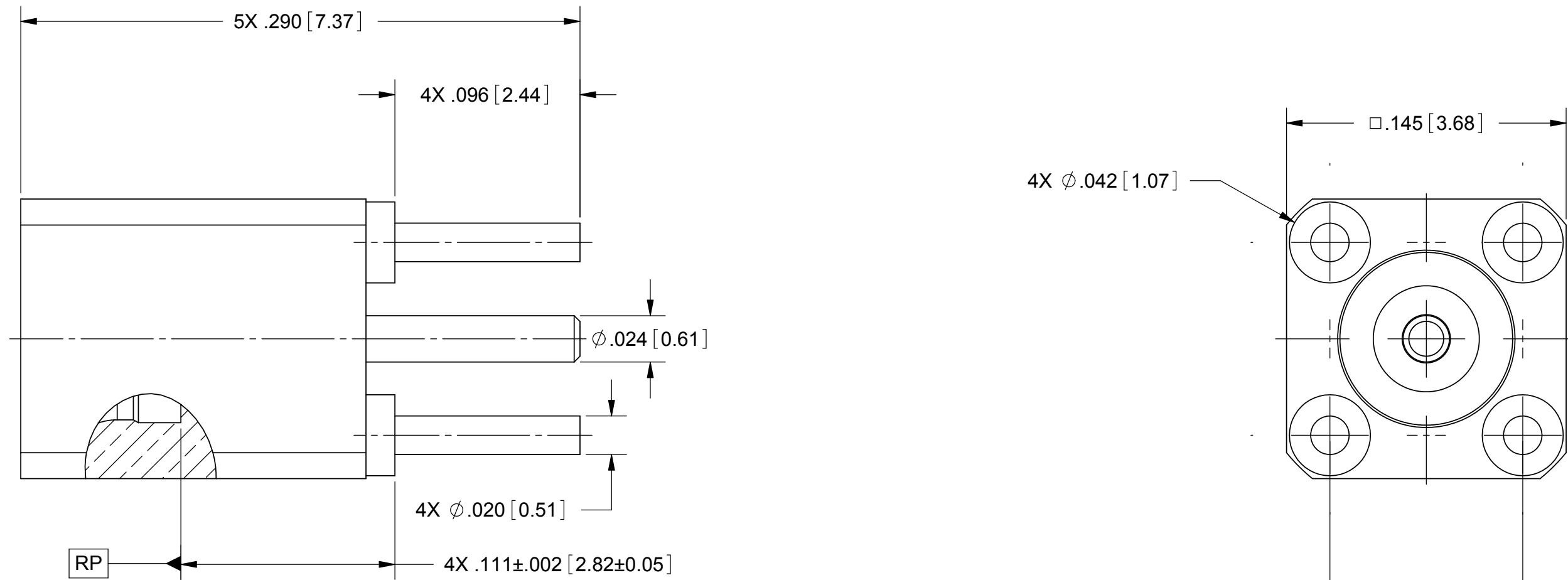


PRODUCT DATA DRAWING

REVISION HISTORY			
REV	DESCRIPTION	DATE	APPROVED
-	DCN 35971	07/08	STW
A	UPDATE	11/12	PJS
B	DCN 43140	02/17	BNK



NOTES:

- FOR A FOOTPRINT RECOMMENDATION SPECIFIC TO YOUR PCB, PLEASE CONTACT US AT applications@svmicro.com

MATERIAL:

BODY & CONTACT: BERYLLIUM COPPER

INSULATOR: PTFE

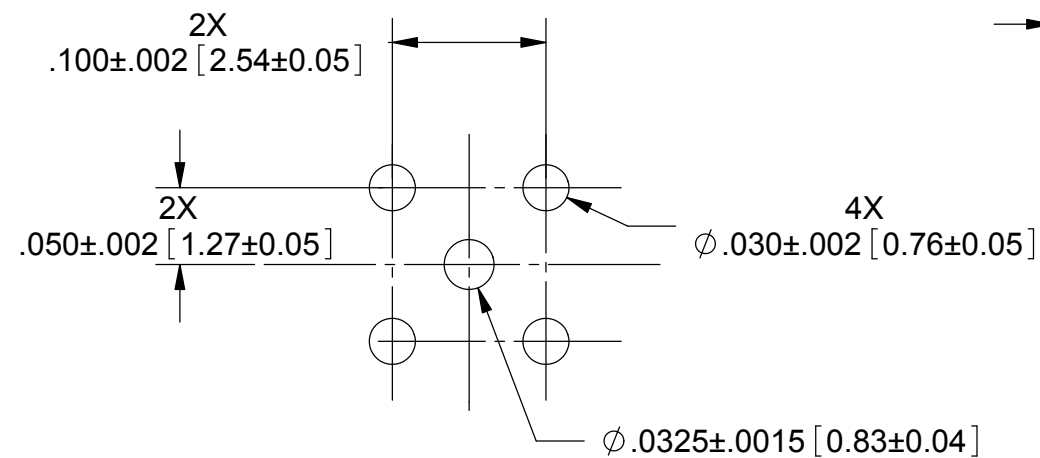
FINISH:

BODY: 4 μ-in MIN GOLD

CONTACT: 12 μ-in MIN GOLD

PERFORMANCE:

IMPEDANCE: 50 OHMS
 FREQ. RANGE: DC TO 28.0 GHz
 VSWR: 1.35:1 DC TO 28.0 GHz
 DWV: 325 VRMS
 OPERATING TEMP.: -55 °C TO +125 °C



RECOMMENDED MTG. HOLE PATTERN

MATERIAL: SEE NOTES	DIMENSIONS ARE IN INCHES TOLERANCES: FRACTIONAL: ±1/64 ANGULAR: X° ±1'0" X'X' ±15'	UNLESS OTHERWISE SPECIFIED 1) ALL DIMENSIONS ARE IN INCHES (MILLIMETERS) 2) ALL DIMENSIONS ARE AFTER PLATING. 3) BREAK CORNERS & EDGES .005 R. MAX. 4) CHAM. 1ST & LAST THREADS. 5) SURFACE ROUGHNESS 63-MIL-STD-10. 6) DIA. 'S ON COMMON CENTERS TO BE CONCENTRIC WITHIN .005 T.I.R. 7) REMOVE ALL BURRS	SV Microwave, Inc. 2400 Centrepark West Drive, Suite 100 West Palm Beach, FL 33409
FINISH: SEE NOTES	DECIMAL: X ±.030 .XX ±.010 .XXX ±.005	INTERPRET DIMENSIONS AND TOLERANCES PER ASME Y14.5M - 1994	TITLE: SMPM ST. MALE FULL DETENT TO PCB MOUNT
SURFACE AREA: N/A	PROPRIETARY THE INFORMATION CONTAINED IN THIS DRAWING IS THE SOLE PROPERTY OF SV MICROWAVE, INC. ANY REPRODUCTION IN PART OR AS A WHOLE WITHOUT THE WRITTEN PERMISSION OF SV MICROWAVE, INC IS PROHIBITED.	THIRD ANGLE PROJECTION	SIZE: B CAGE CODE: 95077 DWG. NO.: 3287-4100
		DRAWN: PJS 07/24/08 CHECKED: STW 07/24/08 APPROVED: STW 07/24/08	SCALE: 16:1 SHEET 1 OF 1