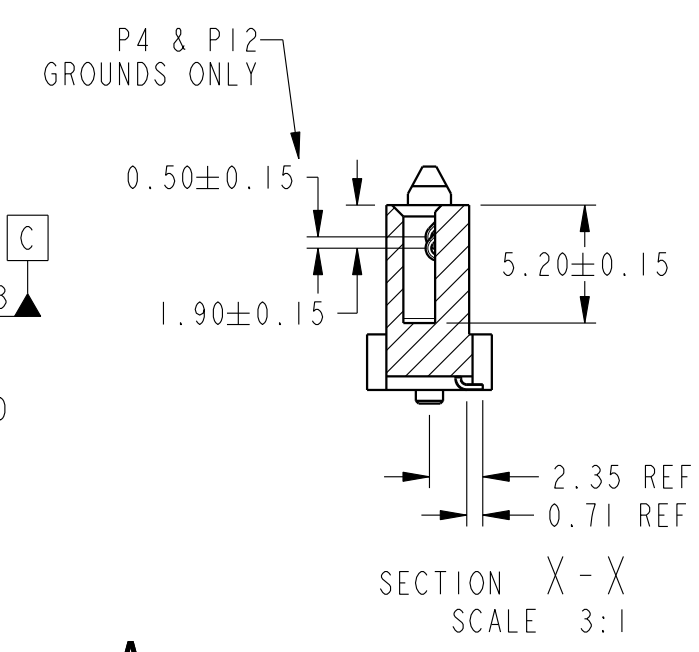
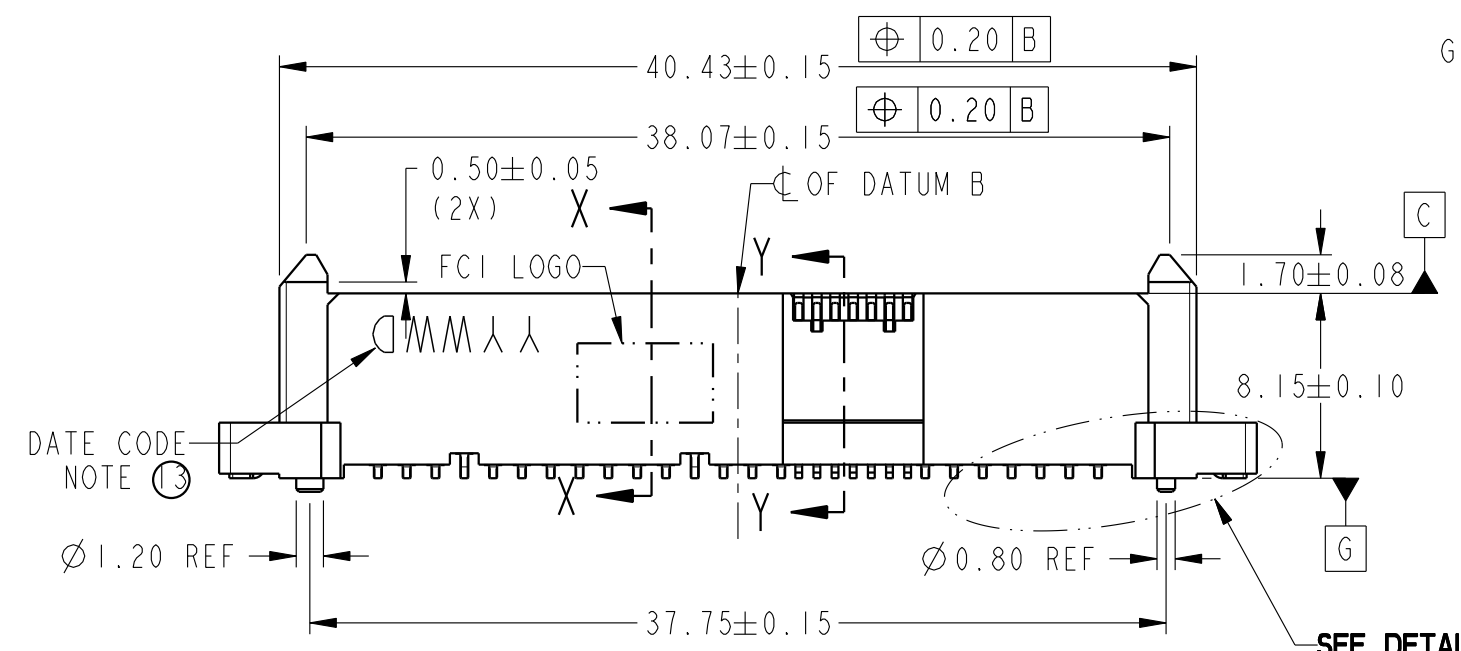
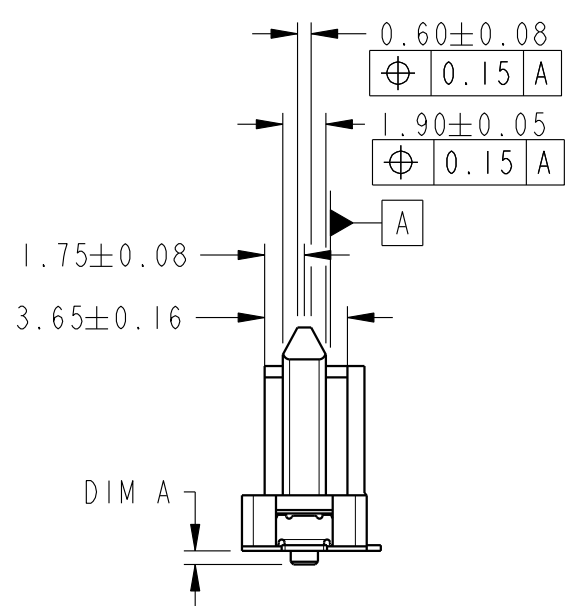
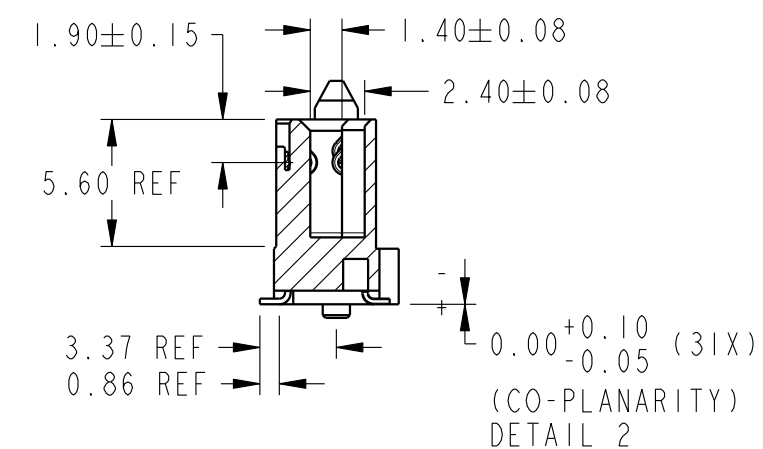
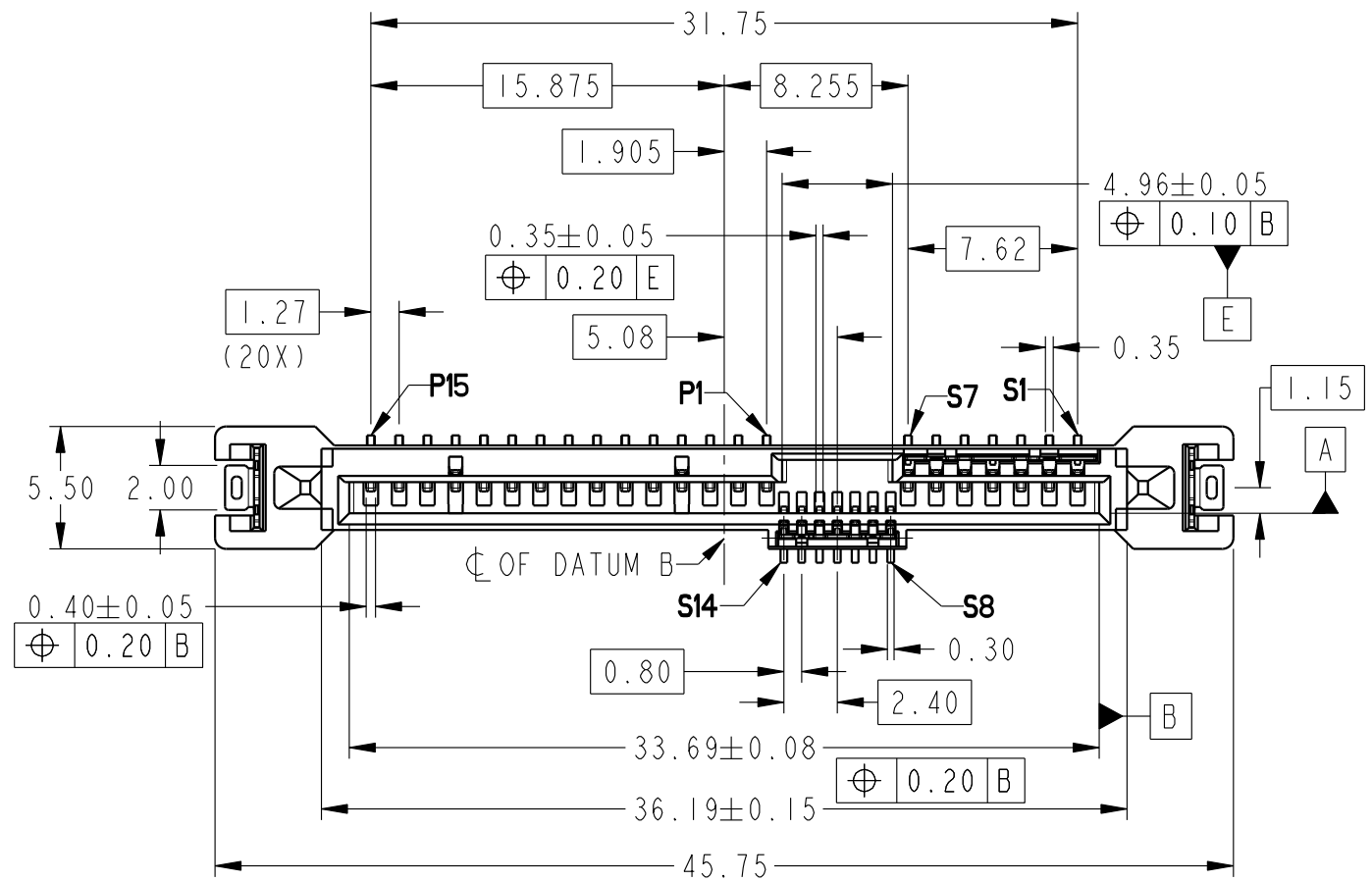


PRODUCT NUMBER
SEE TABLE



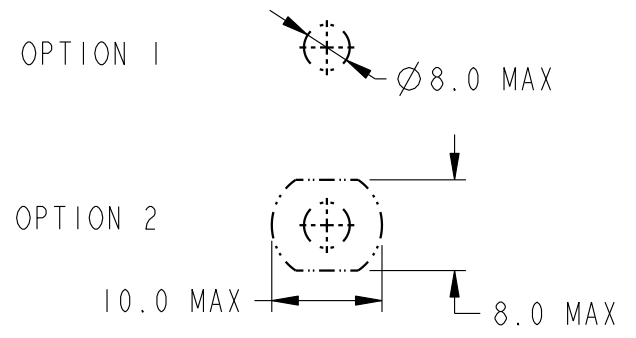
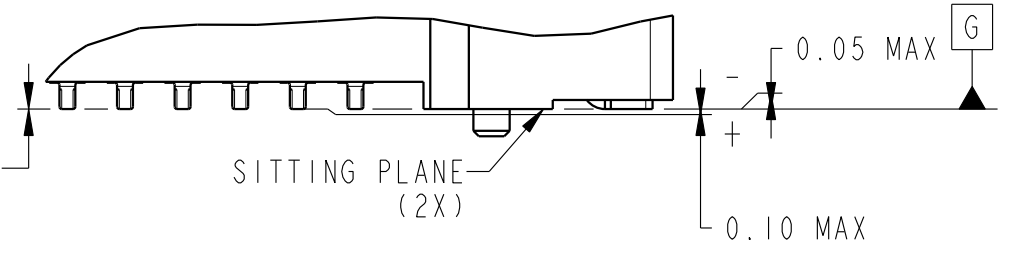
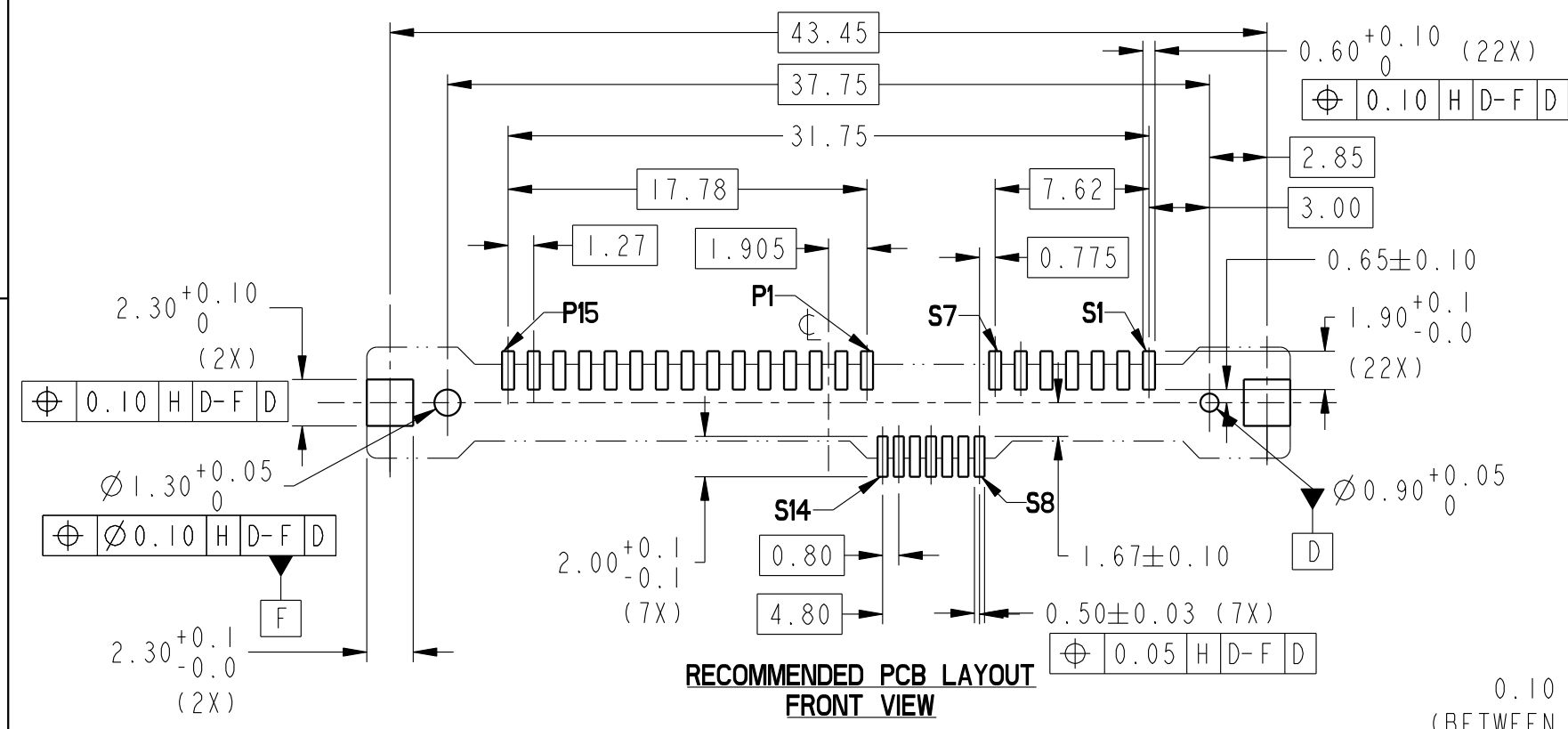
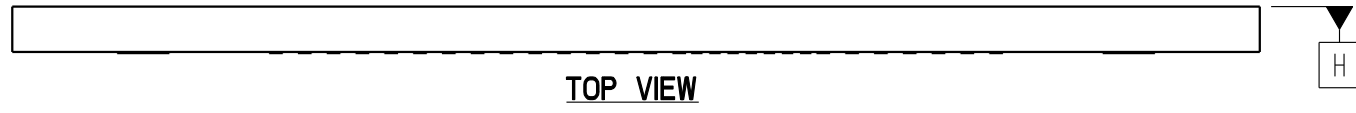
Amphenol FCI

© 2020 Amphenol Corporation

| | | | | | | | | | | |
|---------------------------------------|---------------------|-------|--------------|---------------------|------------|----------------------------------------------|------|--------------------|---------------|------------|
| spec ref | - | dr | Noorhazinda, | 2017/04/12 | projection | mm | size | A3 | scale | 1:1 |
| tolerance std | ISO 406 ISO 1101 | eng | Wai-Bin Cho | 2021/11/12 | | mm | A3 | ecn no | ELX-M-42914-1 | |
| TOLERANCES UNLESS OTHERWISE SPECIFIED | | chr | - | appr | | | | | Koon-Poh Tay | 2021/11/17 |
| surface | linear | 0.X | ±- | Amphenol FCI | | 24G SAS RECEPTACLE VERTICAL SMT TYPE ASSY | | dwg no 10142500 | rev F | |
| | angular | 0.XXX | ±- | | | | | | | |
| ISO 1302 | | 0° | ±2° | cat. no. | - | Product - Customer Drw | | | sheet 1 of 3 | |

Creo File:ELX-MC-A3C,REV F,2020-12-21

| PRODUCT NUMBER | DIM A | METAL CLIP | PLATING | PICK-UP CAP | PACKAGING | REMARKS |
|--------------------|-------|------------|---------|-------------|-------------|--------------|
| 10142500-001LF | 0.60 | 2 PCS | NOTE 2 | NO | TRAY | NOTE 7 |
| 10142500-001CLF | | | | YES | TAPE & REEL | NOTE 3 & 7 |
| 10142500-001TRLF | | | | NO | | NOTE 5 & 7 |
| 10142500-001C-TRLF | 1.00 | | | YES | TRAY | NOTE 3 5 & 7 |
| 10142500-002LF | | | | NO | | NOTE 7 |
| 10142500-002CLF | | | | YES | | NOTE 3 & 7 |
| 10142500-002C-TRLF | | | | YES | TAPE & REEL | NOTE 3 5 & 7 |



| | | | | | | | | | | |
|---------------------------------------|---------------------|------|--------------|--------------|--------------------|------------------------|-----------|---------------|------------------------|--------------|
| spec ref | - | dr | Noorhazinda, | 2017/04/12 | projection | mm | size | A3 | scale | 1:1 |
| tolerance std | ISO 406 ISO 1101 | eng | Wai-Bin Cho | 2021/11/12 | | | ecn no | ELX-M-42914-1 | | |
| TOLERANCES UNLESS OTHERWISE SPECIFIED | | chr | - | - | | | rel level | Released | | |
| surface | linear | appr | Koon-Poh Tay | 2021/11/17 | product family | SAS | rel level | Released | | |
| ISO 1302 | angular | 0° | ±2° | Amphenol FCI | 24G SAS RECEPTACLE | VERTICAL SMT TYPE ASSY | cat. no. | - | Product - Customer Drw | sheet 2 of 3 |
| | | | | | | | | | | |

Amphenol FCI

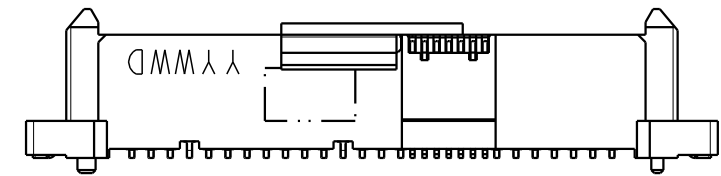
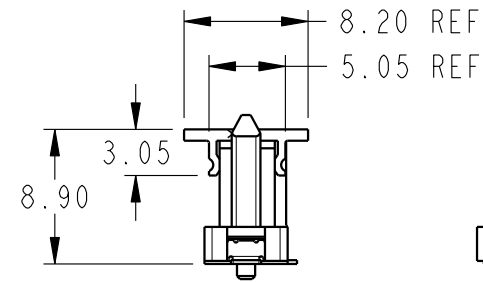
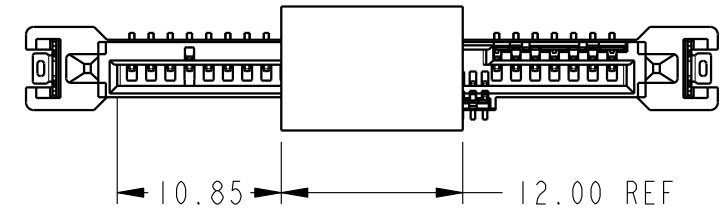
© 2020 Amphenol Corporation

Creo File:ELX-MC-A3C_REV F_2020-12-21

PRODUCT NUMBER
SEE TABLE

NOTES:

1. MATERIAL :
 - 1) HOUSING : HIGH TEMP THERMOPLASTIC, UL 94V-0
COLOR : BLACK
 - 2) TERMINAL : COPPER ALLOY
 - 3) HOLD DOWN : COPPER ALLOY
2. FINISH :
 - 1) TERMINAL : 30μ" Au PLATING (CONTACT POINT) OVER 50μ" NICKEL
 - 2) SOLDER TAIL : 100μ" MIN Sn OVER 50μ" NICKEL
 - 3) HOLD DOWN : 100μ" MIN Sn OVER 50μ" NICKEL
3. PART WITH PICK-UP CAP, P/N XXXXXXXX-XXXCLF.
4. THE STD PACKAGING IS IN TRAY UNLESS OTHERWISE SPECIFIED.
5. PART NUMBER WITH SUFFIX "-TR" MEANS FOR TAPE & REEL PACKAGING (E.G. P/N: XXXXXXXX-XXXC-TRLF).
6. THE HOUSING WILL WITHSTAND EXPOSURE TO 260°C PEAK TEMPERATURE FOR 10 SECONDS IN A CONVECTION, INFRA-RED OR VAPOR PHASE REFLOW OVEN.
7. THIS PRODUCT MEETS EUROPEAN UNION DIRECTIVES AND OTHER COUNTRY REGULATIONS AS DESCRIBED IN GS-47-0004.
8. PART NUMBERS ENDING IN "LF" MEANS FOR NOTE 7 LEAD FREE IDENTIFICATION
9. DATE CODE LOCATION. DATE CODE NO. YYWWD (E.G. 14225)
10. A $\triangle F$ SYMBOL WILL BE NEXT TO ANY DIMENSION, VIEW, OR NOTE WHICH HAS BEEN MODIFIED WITH THE CURRENT DRAWING REVISION.



SCALE 2:1

| | | | | | | | | | | | | |
|--------------------------------------|--|---------------------------------------|---------------|------------|-----------------|------------------------|------------|------------------------|--------------------|--------------|-----|---|
| spec ref - | | dr | Noorhazlinda, | 2017/04/12 | projection | mm | size | A3 | scale | 1:1 | | |
| tolerance std ISO 406 ISO 1101 | | TOLERANCES UNLESS OTHERWISE SPECIFIED | | | eng | Wai-Bin Cho | 2021/11/12 | ecn no ELX-M-42914-1 | | | | |
| | | chr | - | | | product family | | SAS | rel level Released | | | |
| surface | | linear | 0.X | ±- | Amphenol FCi | title | | 24G SAS RECEPTACLE | dwg no | 10142500 | rev | F |
| | | | 0.XX | ±0.20 | | VERTICAL SMT TYPE ASSY | | | | | | |
| | | angular | 0° | ±2° | | cat. no. - | | Product - Customer Drw | | sheet 3 of 3 | | |