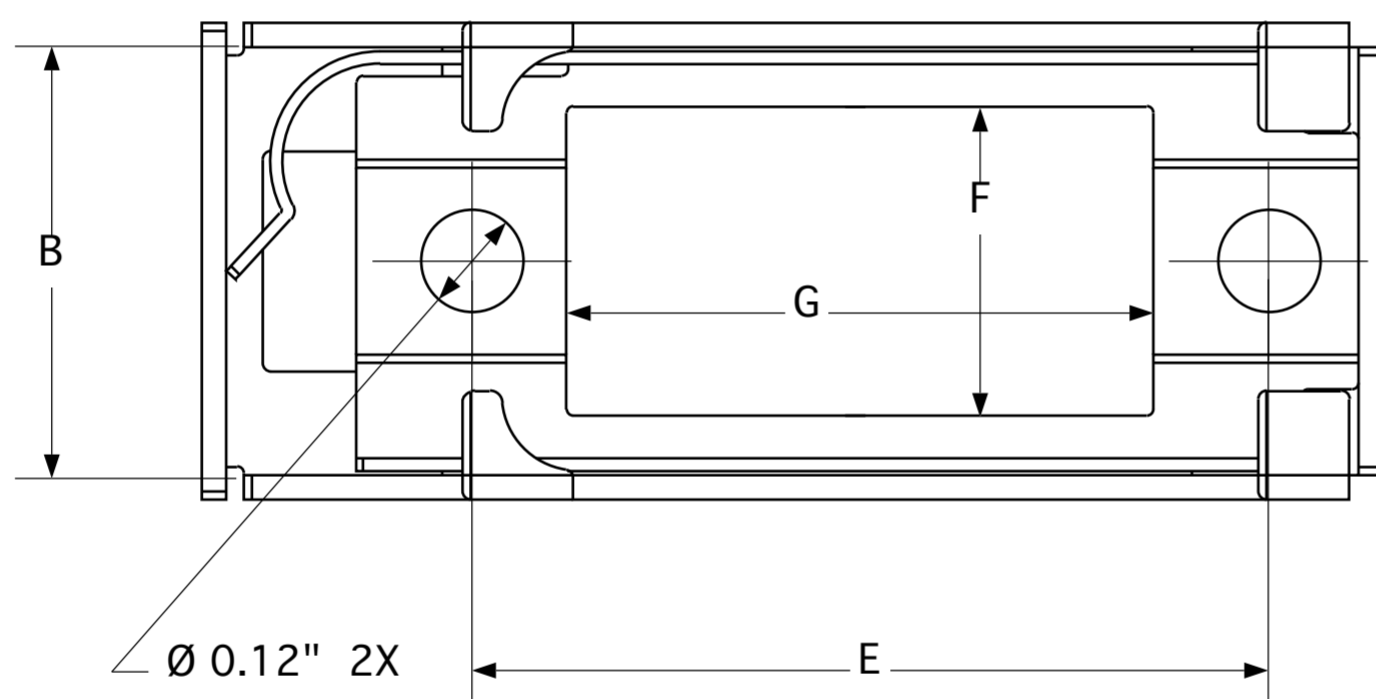
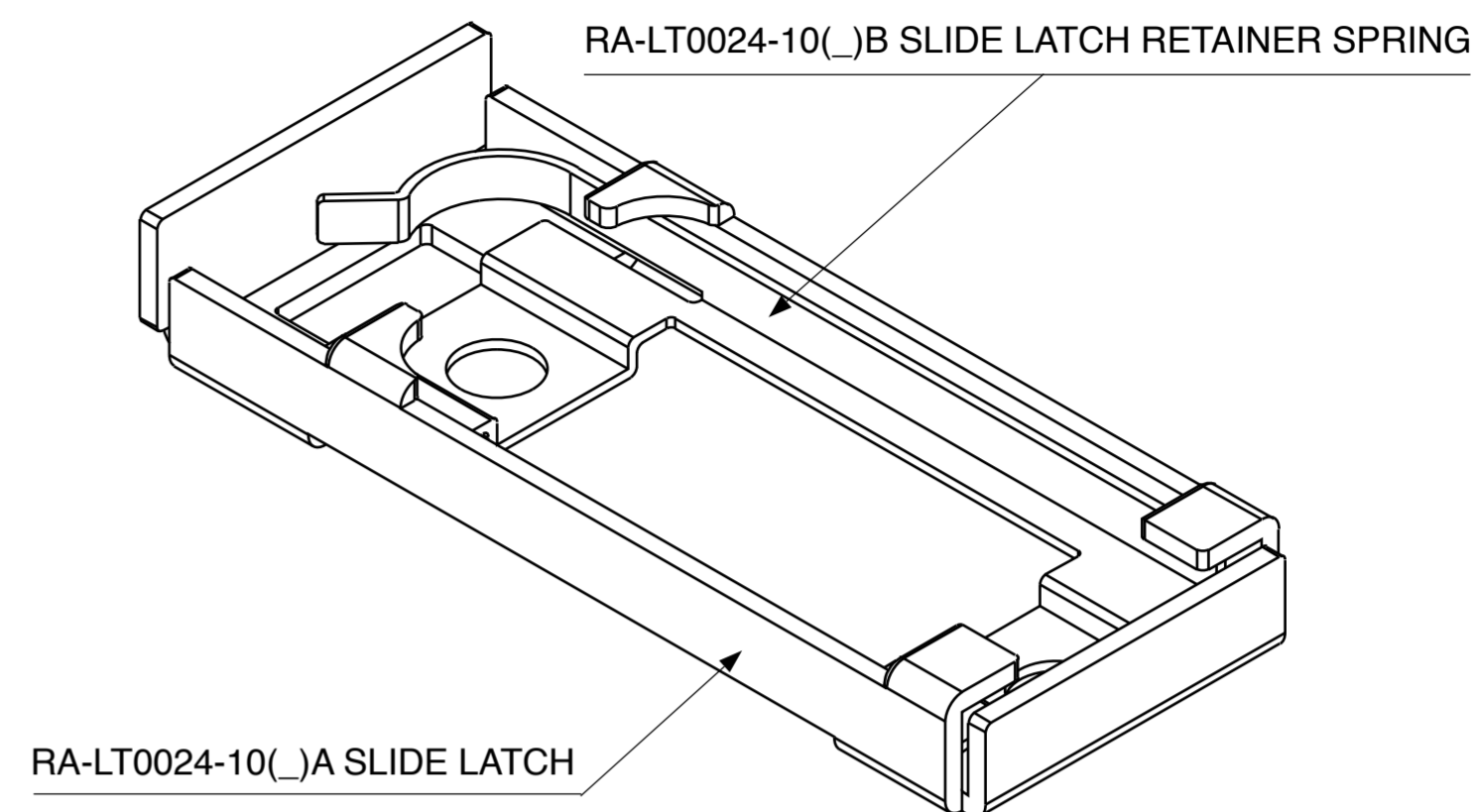


RA-LT0024-10() SLIDE LATCH



ASSEMBLY OF PARTS RA-LT0024-10()A & RA-LT0024-10()B



Both Parts come Assembled and Comprise The RA-LT0024-10() Slide Latch.

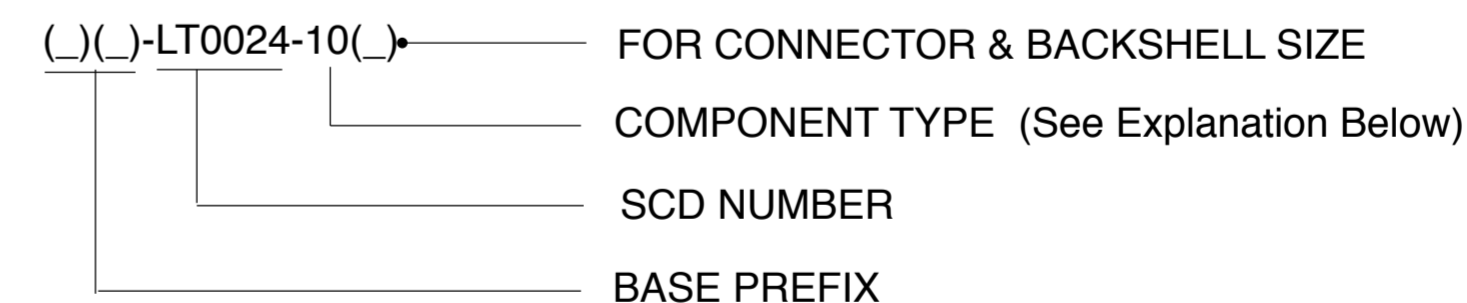
RUSSTECH RA-LT0024-10() SLIDE LATCH

Dash Number	Connector Backshell Size	A Inches	B Inches	C Inches	D Inches	E Inches	F Inches	G Inches	Max. Weight (lbs)
101	1	1.45	0.52	0.58	0.22	0.98	0.39	0.73	0.010
102	2	1.78	0.52	0.58	0.22	1.31	0.39	1.06	0.011
103	3	2.32	0.52	0.58	0.22	1.85	0.40	1.60	0.013
104	4	2.96	0.52	0.58	0.22	2.50	0.40	2.25	TBD
105	5	2.87	0.63	0.69	0.22	2.40	0.51	2.15	0.015
106	6	2.97	0.69	0.75	0.22	2.50	0.56	2.27	0.016

NOTES:
Refer To Drawing Dimension References A Through G.

1. No Mounting Hardware Included.

CUSTOMER PART NUMBER EXPLANATION



- 10 Refers To The Slide Latch Assembly Consisting Of The -10()A Slide Latch And The -10()B Retainer Spring, When Assembled Together Form The Working Slide Latch Component.
- 20 Refers To The -20() Slide Latch Receiver Plate That Forms The Mating Component To The Slide Latch Backshell Accessory(See Drawing RC11063-S)



MATERIALS:
RA-LT0024-10()A SLIDE LATCH :
Stainless Steel
RA-LT0024-10()B RETAINER SPRING
Steel
Finish, Nickel Plate.
ALL MATERIALS RoHS COMPLIANT.

RECOMMENED HARDWARE
#4-40 X 1/4 MAX" PAN HEAD SCREW,



CONFIDENTIAL INFORMATION. THIS DOCUMENT AND CONTAINED INFORMATION ARE THE PROPERTY OF RUSSTECH ENGINEERING COMPANY, INC. THE RECIPIENT, BY RECEIPT AND RETENTION HEREOF, ACKNOWLEDGES THAT THE INFORMATION RECEIVED IS CONFIDENTIAL, DEVELOPED OVER TIME AT SIGNIFICANT EXPENSE, AND THAT DISCLOSURE THEREOF TO THIRD PARTIES WILL CAUSE IRREPARABLE HARM TO RUSSTECH. THE RECIPIENT, BY THE RECEIPT AND RETENTION OF SUCH INFORMATION, AGREES TO MAINTAIN SUCH INFORMATION IN CONFIDENCE, TO NOT DISCLOSE IT TO THIRD PARTIES, AND TO RETURN IT, AND ALL COPIES OR DERIVATIVES THEREOF, IN ANY FORM, TO RUSSTECH, UPON REQUEST.

WWW.RUSSTECHENGINEERING.COM

CAGE CODE 1EG24

TOLERANCES (UNLESS NOTED)

DECIMALS:
XX± .02
XXX± .005
ANGLES: ± 2°

CONCENTRICITY SAME AS ABOVE

SCALE: NONE
BY Don Fieberg
Released 11/01/2018

RA-LT0024-10()
SLIDE LATCH ASSEMBLY
BACKSHELL ACCESSORY



RUSSTECH
Engineering Co., Inc.
16 TECHNOLOGY DRIVE 111
IRVINE, CA 92618

DRAWING NO.	REV.
RC11061-S	9