

## PARTS ON THE SYSTEM, LISTED BY TEMPERATURE

	CATALOG NUMBER	CURRENT TEMP	HOLDING TEMP	OPENING TEMP	PART CLASS	LINE TERMINAL	LOAD TERMINAL	SUBSTITUTE
A	WSM	30	90	140	N	SPECIAL(3)	SPECIAL	NO SUB
A	WTJ	30	100	150	S	SPECIAL	SPECIAL	NO SUB
A	WMO	15	115	165	M	4	4	NO SUB
A	WMQ	15	115	165	M	14	14	NO SUB
OBS	WRD	15	115	165	O	SPECIAL	13	NO SUB
A	WTT	30	115	165	N	SPECIAL	SPECIAL	NO SUB
A	WWB	30	115	165	N	3	3	NO SUB
A	WYH	30	115	165	M	1	1	WMO
A	WKS	15	125	175	N	1	1	WMO, 165
A	WVK	15	125	175	N	9	SPECIAL	NO SUB
A	WSH	30	140	190	M	6	SPECIAL	NO SUB
A	WST	30	140	190	N	SPECIAL	SPECIAL	NO SUB
A	WWD	30	140	190	N	3	3	NO SUB
A	WKJ	15	150	200	S	4	4	NO SUB
A	WSE	30	150	200	N	6	SPECIAL	NO SUB
A	WSP	30	150	200	N	SPECIAL	SPECIAL	NO SUB
A	WUQ	30	150	200	N	5	5	WKJ, 15A
A	WWE	30	150	200	S	3	3	WWD, 190
A	WVR	30	175	225	S	SPECIAL	SPECIAL	NO SUB
A	WVR-A	30	175	225	N	SPECIAL	SPECIAL	NO SUB
A	WWU	30	175	225	S	15	15	WWU
A	WZL	30	175	225	N	14	14	WWU
A	WKK	15	200	250	S	4	4	WKJ, 200
A	WPQ	15	200	250	N	1	1	WKK
OBS	WPS	15	200	250	O	9	12	NO SUB
A	WQN	15	200	250	N	13	14	WWU, 225
A	WSS	30	200	250	N	6	SPECIAL	NO SUB
OBS	WVG	15	200	250	O	3	9	NO SUB
A	WVQ	30	200	250	N	5	5	NO SUB
A	WWG	30	200	250	N	3	3	NO SUB
A	WWX	30	200	250	N	1	1	WKK, 15A
A	WYG	30	200	250	N	2	2	WKK, 15A
A	WZK	30	200	250	S	SPECIAL	SPECIAL	NO SUB
A	WQW	15	210	260	M	3	2	NO SUB
A	WUU	30	210	260	N	5	5	WKB, 15A
A	WPP	15	220	270	N	4	4	WKK, 250
A	WKB	15	235	285	S	5	5	WKH
OBS	WKF	15	235	285	O	4	6	NO SUB
A	WKH	15	235	285	S	4	4	WKB
A	WSL	30	235	285	N	SPECIAL	SPECIAL	NO SUB
A	WTK	30	235	285	S	4	4	WKB
A	WWI	30	235	285	N	3	3	NO SUB
A	WZV	30	235	285	M	16	15	WUG
OBS	WIP	15	260	310	O	16	15	WUG
A	WKO	15	260	310	M	1	1	WQP
A	WLF	15	260	310	N	1	1	WKO

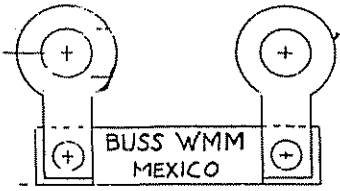
PARTS ON THE SYSTEM, LISTED BY TEMPERATURE

	CATALOG NUMBER	CURRENT TEMP	HOLDING TEMP	OPENING TEMP	PART CLASS	LINE TERMINAL	LOAD TERMINAL	SUBSTI- TUTE
A	WLS	15	260	310	N	2	2	WWV
OBS	WLW	15	260	310	M	1	1	WQP
A	WQP	15	260	310	M	4	4	WLW
A	WUG	30	260	310	S	15	15	NO SUB
A	WUV	30	260	310	N	5	5	WWV
OBS	WVY	30	260	310	O	13	14	WUG
A	WWV	30	260	310	N	2	2	WWV
A	WWZ	30	260	310	N	1	1	WWV
A	WIE	15	290	340	N	15	16	WUH
OBS	WMN	15	290	340	O	13	14	WUH
A	WRR	15	290	340	M	SPECIAL	13	NO SUB
A	WUH	30	290	340	S	15	15	WZC
OBS	WVH	15	290	340	O	SPECIAL	SPECIAL	NO SUB
A	WZC	30	290	340	S	15	16	WUH
A	WKL	15	310	360	S	1	1	NO SUB
A	WUI	30	310	360	N	15	15	WUR
A	WUR	30	310	360	S	14	14	NO SUB
A	WUW	30	310	360	M	5	5	WKL, 15A
A	WWK	30	310	360	M	3	3	NO SUB
A	WMB	30	360	410	M	1	1	NO SUB
A	WQL	30	360	410	N	4	4	WMB
OBS	WUA	30	360	410	N	1	2	NO SUB
A	WUD	30	360	410	N	3	3	WZX
OBS	WUX	30	360	410	N	5	5	WMB
OBS	WWR	30	360	410	S	14	13	WZJ, 390
A	WZX	30	360	410	S	3	3	NO SUB
A	WKV	30	390	440	S	4	4	WVD
OBS	WQO	30	390	440	N	13	14	WZJ
A	WVD	30	390	440	N	1	1	WKV
A	WWL	30	390	440	S	3	3	WZX, 410
A	WZJ	30	390	440	M	15	16	WZJ
A	WMM	30	410	460	N	1	1	WUY
A	WTZ	30	410	460	N	SPECIAL	SPECIAL	NO SUB
A	WUC	30	410	460	N	15	15	WZJ, 440
A	WUY	30	410	460	S	5	5	WKV, 440
A	WUE	30	440	490	N	5	5	WMM, 460
A	WWA	30	440	490	N	1	1	WMM, 460
OBS	WWN	30	440	490	O	3	3	WYM
A	WYM	30	440	490	N	3	3	WWL, 440
A	WVA	30	500	550	S	43	43	NO SUB

# TERMINAL CODES

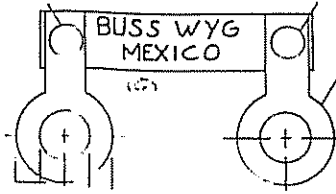
1

1



2

2



3

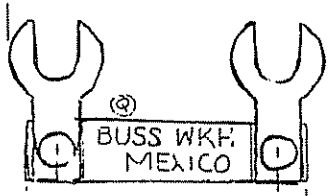
3



2 1/16

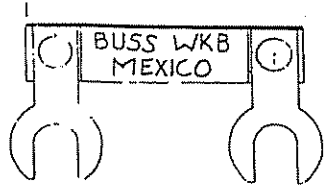
4

4



5

5



6

6

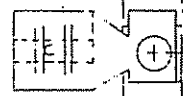
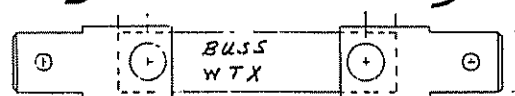
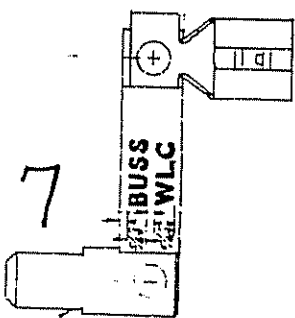


11

9

9

10

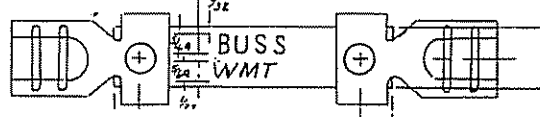


7

12

12

10

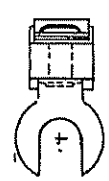
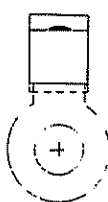
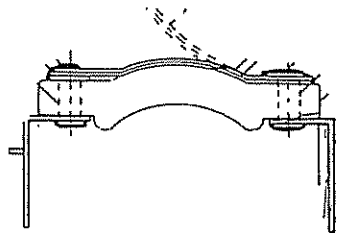
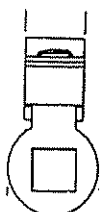
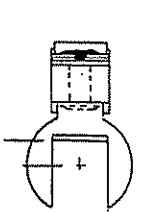


16

15

13

14



CODE 20 IS "SPECIAL"