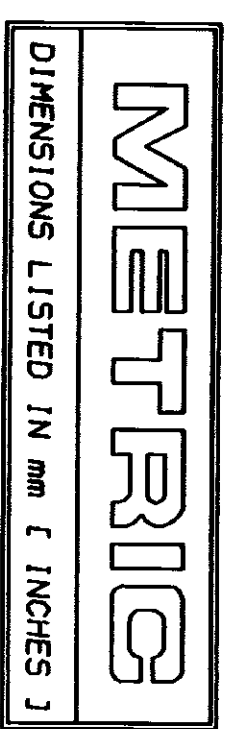
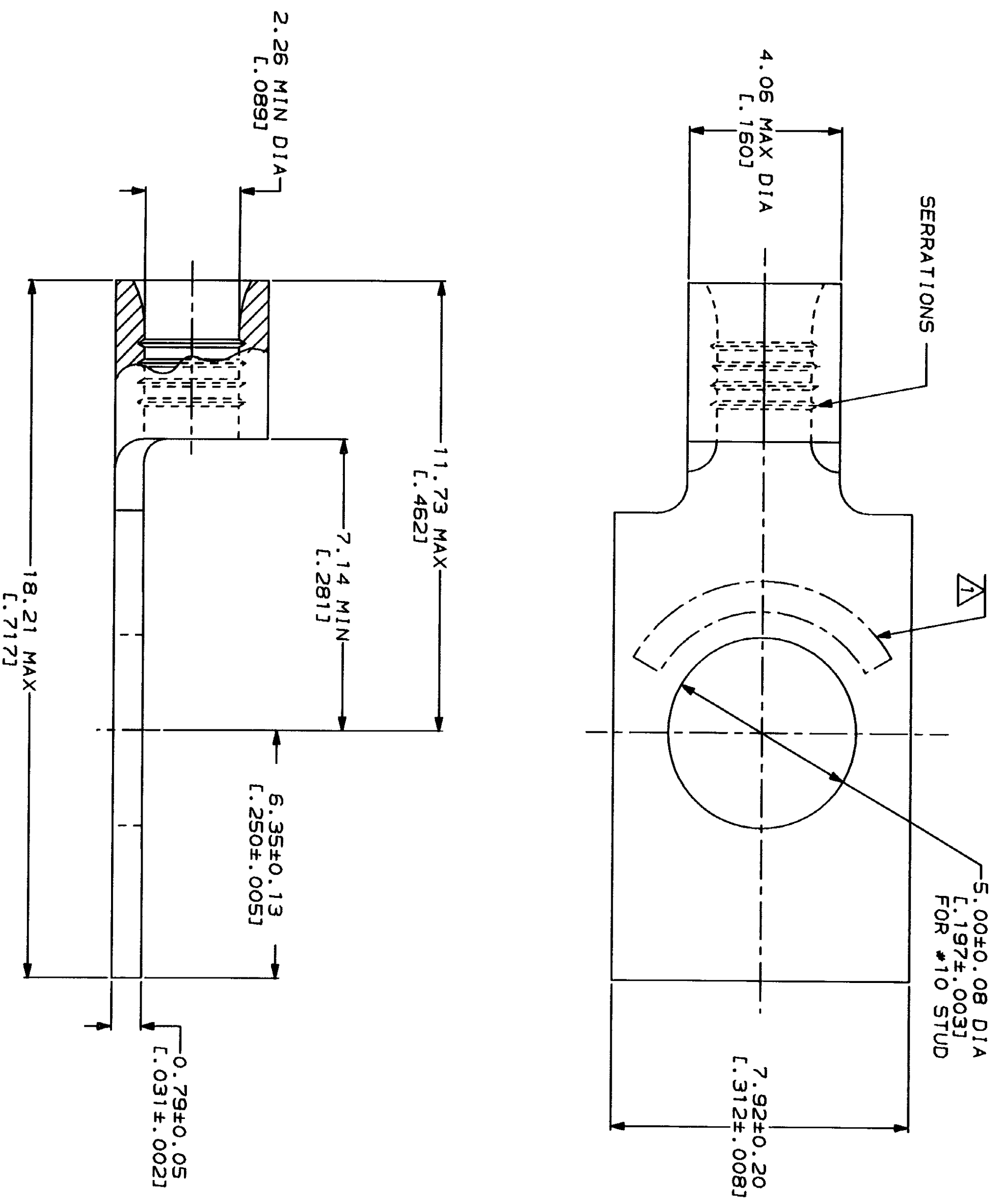


LOC	DISP	REV	ZONE	LTR	DESCRIPTION	DATE	APPD
G	14			A	REVISED PER 0720-0230-93	2/28/94	AMP



AMP WIRE RANGE	IL E13288 Listed
16-14 AWG STRANDED	16-14 AWG STRANDED
LR7189 Certified	MILITARY P/N AND CLASS
NOT CERTIFIED	NOT APPLICABLE

△ STAMP AMP 16-14\* APPROX AS SHOWN



AMP INCORPORATED  
CUSTOMER SERVICE SYSTEMS

FOR ADDITIONAL PRODUCT INFORMATION OR COPIES OF DRAWINGS AND TECHNICAL DOCUMENTS	PRODUCT INFORMATION CENTER 1-800-522-6752
FOR APPLICATION TOOLING INFORMATION	TOOLING ASSISTANCE CENTER 1-800-722-1111
FOR ORDER ENTRY	1-800-526-5142

MAX RECOMMENDED OPERATING TEMPERATURE: 170°C MAX

VOLTAGE RATING: NOT APPLICABLE

WIRE CROSS SECTIONAL AREA RANGE: 1.04-2.62mm² [2.050-5.180] CIR MILS STRANDED

THIS DRAWING IS A CONTROLLED DOCUMENT FOR AMP AND THE CONTROLLING ORGANIZATION SHOULD BE CONTACTED FOR THE LATEST REVISION.

DO NOT SCALE PRINT. UNLESS SPECIFIED DIMENSIONS IN INCHES - TOLERANCES ON: 1. 2 PLG DEC ± .005 3 PLG DEC ± .002 ANGLES

MATERIAL: COPPER PER ASTM B-152 ANNEALED

FINISH: TIN PLATE 0.00254 [1.000100] MIN THK PER MIL-T-10727

DR 1-28-93 TA BRINKMAN
CHK 1-28-93 DA PATTERSON
APPD 1-28-93 DE MILLER
APPD 1-28-93 JL NECKLEY
PRODUCT SPEC

APPLICATION SPEC

WEIGHT

AMP  
AMP Incorporated  
Horshurstburg, PA 17105-3608

TERMINAL, RECTANGULAR TONGUE, BUDGET

320818  
PART NO

320818