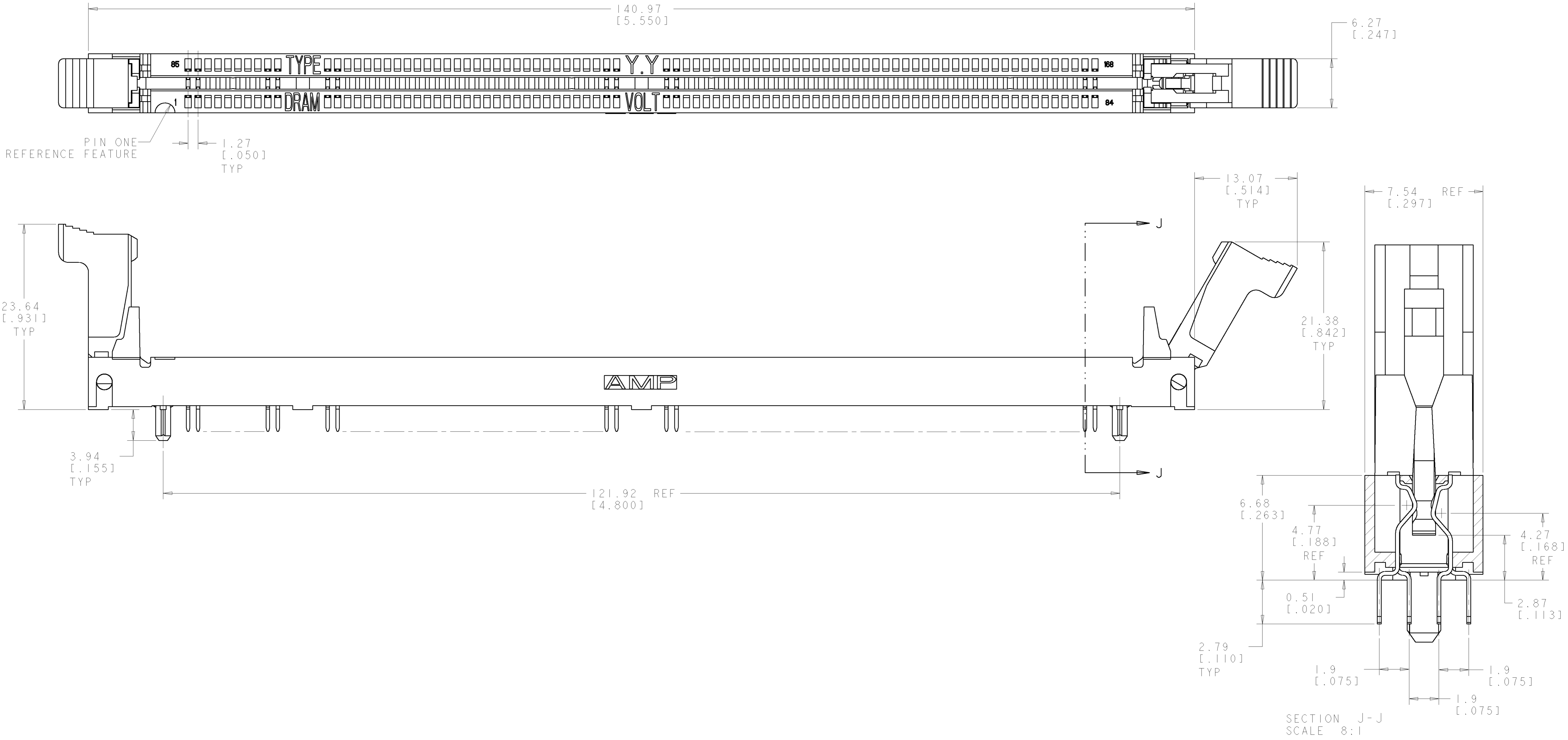


| LOC | DIST | REV | DESCRIPTION | DATE | BY | APPD |
|-----|------|-----|-------------------------------|-----------|----|------|
| GP | 0 | F | OBSOLETE: -1 PER OS11-0143-02 | 11FEB2003 | DD | KK |

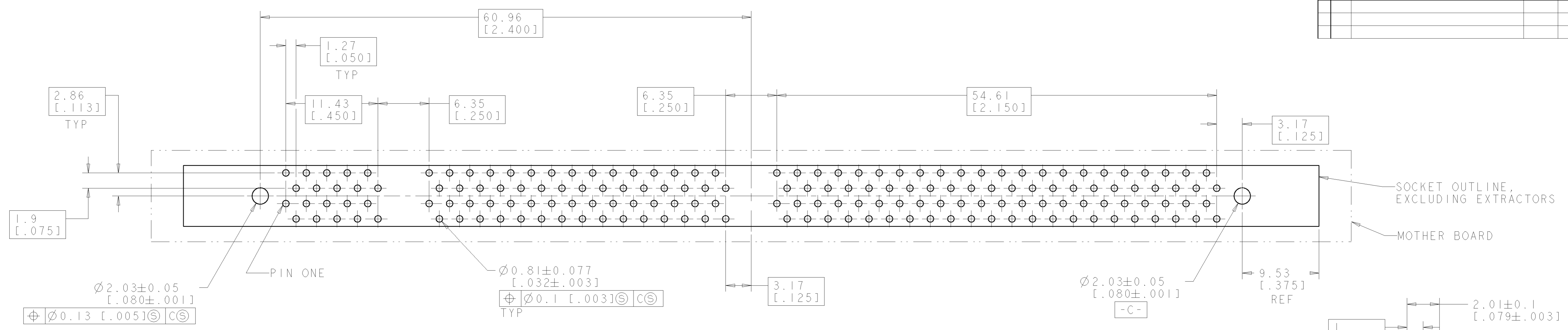


| | | | | |
|---------------------|---------------------|-----------------------------|---------------------|-----------------|
| DETAIL C | DETAIL A | NON-BUFFERED DRAM, 3.3 VOLT | 390040-6 | OBSOLETE |
| DETAIL B | DETAIL A | SYNC DRAM, 3.3 VOLT | 390040-5 | |
| DETAIL A | DETAIL A | STD DRAM, 3.3 VOLT | 390040-4 | |
| DETAIL A | DETAIL B | STD DRAM, 5 VOLT | 390040-1 | |
| KEY #1 | KEY #2 | PART DESCRIPTION | PART NUMBER | |

- △ FOR OPTIMUM PERFORMANCE, CONTACT PAD PLATING SHOULD BE SMOOTH AND FLAT, COPPER CONTACT PADS ARE TO BE OVERPLATED WITH 0.00127[.00050] MIN THK NICKEL FOLLOWED WITH 0.00127[.00040] MIN THK GOLD PLATING.
- △ CONTACT MATING AREA:
 0.00076[.00030] MIN THICK GOLD OVER 0.00381[.000150] NICKEL
 OR GOLD FLASH OVER 0.00051[.00020] MIN THK 80/20 PALLADIUM-NICKEL.
 SOLDER TAILS: 0.00381[.000150] MIN THK TIN-LEAD UNDERPLATE:
 0.00127[.00050] MIN THK NICKEL OVER ENTIRE CONTACT.
- △ MATERIAL:
 HOUSING AND EXTRACTORS: GLASS FILLED, HIGH TEMPERATURE NYLON.
 CONTACTS: PHOS BRONZE

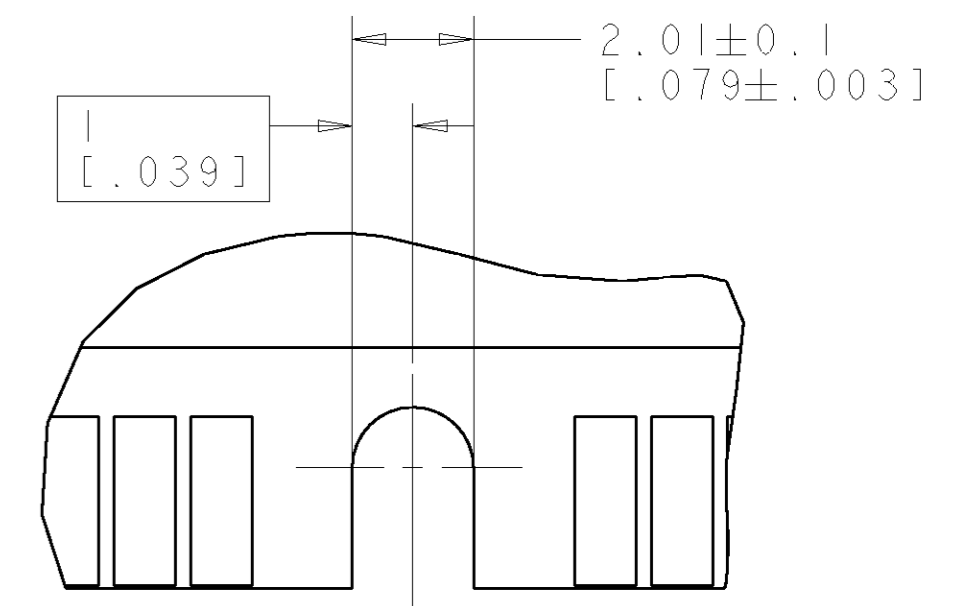
| DIMENSIONS: | | TOLERANCES UNLESS OTHERWISE SPECIFIED: | | DRAWN BY | | DATE | | AMP INCORPORATED | |
|-------------|----------|--|---------------|------------------|-----------|---------------------------|--|------------------|--|
| mm | [INCHES] | 0 PLC | ± | W. SORAH | 26-APR-96 | Harrisburg, PA 17105-3608 | | | |
| | | 1 PLC | ±0.13 [0.005] | R. TALLEY | 26-APR-96 | | | | |
| | | 2 PLC | ± | NAME | | | | | |
| | | 3 PLC | ± | PRODUCT SPEC | | | | | |
| | | 4 PLC | ± | APPLICATION SPEC | | | | | |
| | | 5 PLC | ± | WEIGHT | | | | | |
| | | ANGLES | ± | CUSTOMER DRAWING | | | | | |
| | | FINISH | ± | SCALE | | | | | |

| LOC | DIST | REVISIONS | | | | |
|-----|------|-----------|-------------|------|-----|------|
| GP | 0 | F. LTR | DESCRIPTION | DATE | DWN | APPD |
| | | - | SEE SHEET 1 | - | - | - |

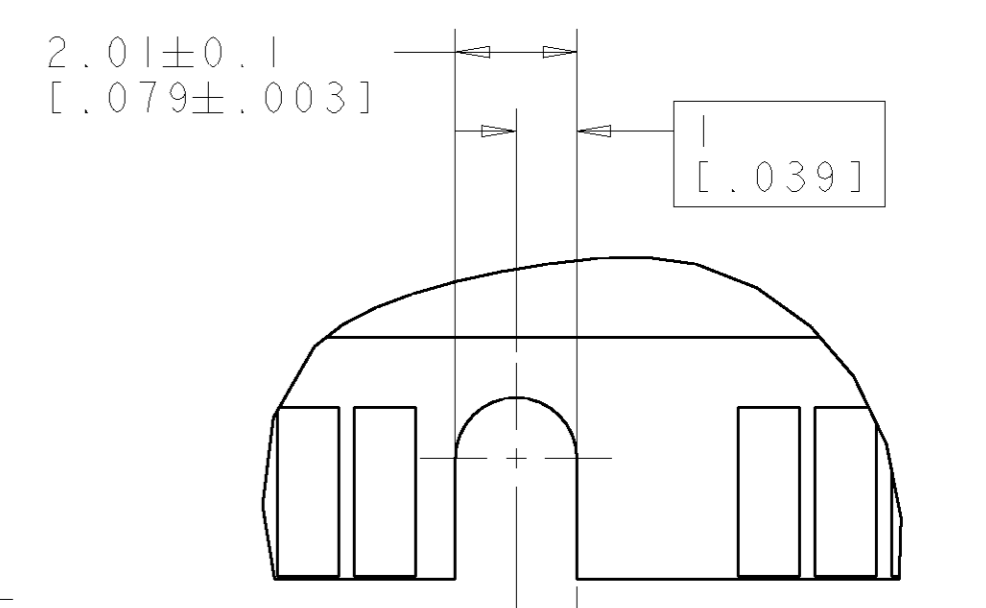


RECOMMENDED CIRCUIT BOARD HOLE LAYOUT

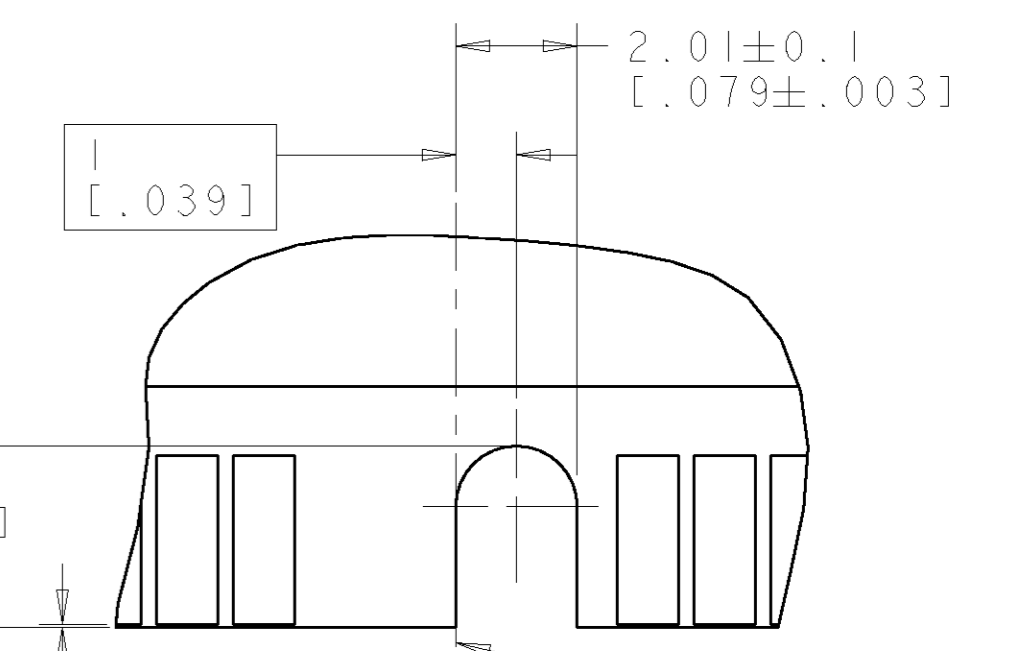
SOCKET OUTLINE, EXCLUDING EXTRACTORS
 MOTHER BOARD



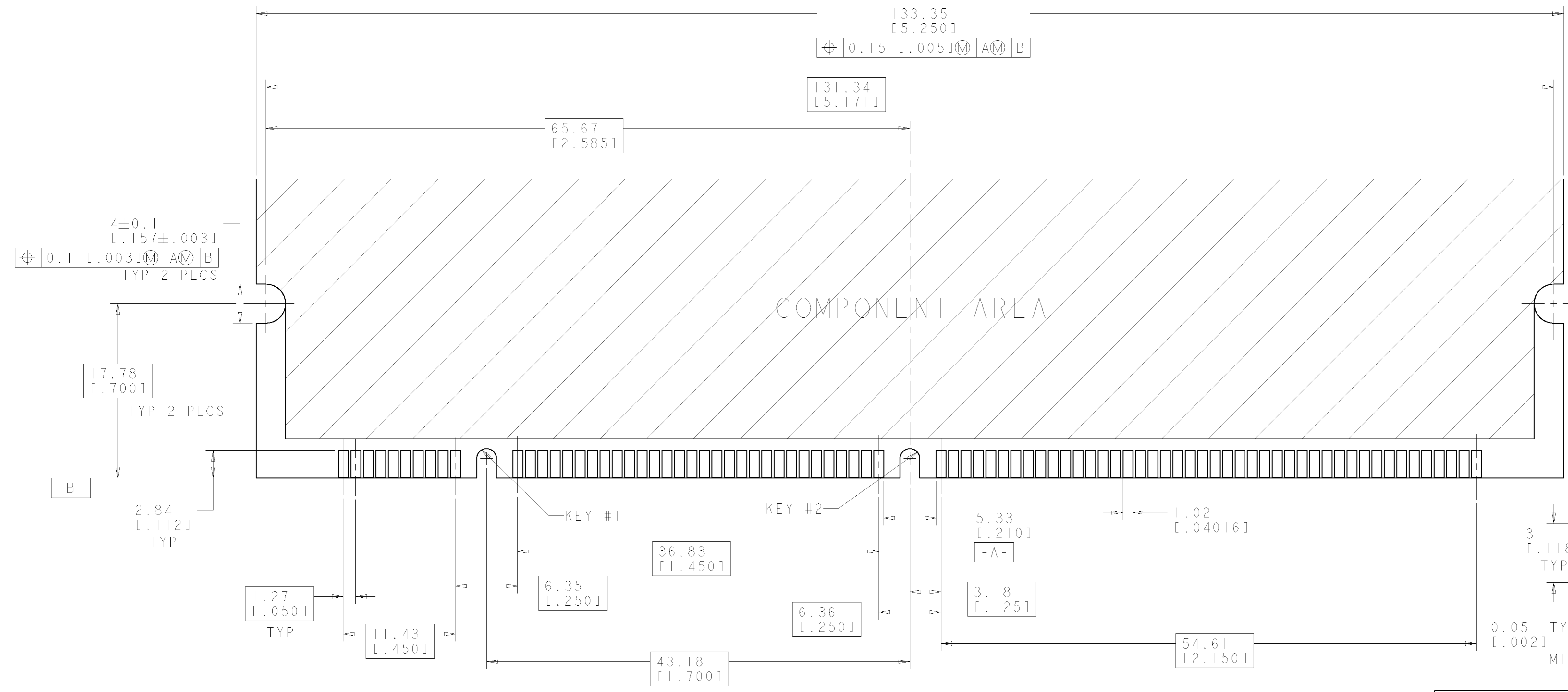
DETAIL A
SCALE 8:1



DETAIL B
SCALE 8:1



DETAIL C
SCALE 8:1



COMPONENT AREA

RECOMMENDED MODULE LAYOUT
 SEE JEDEC SPEC. MO-161 FOR COMPLETE MODULE DETAILS
 1.27±0.10 [.050±.004] THICK ACROSS CONTACT PADS

| | | | |
|--|---|--|--|
| <small>THIS DRAWING IS A CONTROLLED DOCUMENT FOR AMP INCORPORATED. ALL DIMENSIONS, UNLESS OTHERWISE SPECIFIED, SHALL BE IN INCHES. UNLESS OTHERWISE SPECIFIED, UNLESS OTHERWISE SPECIFIED, UNLESS OTHERWISE SPECIFIED.</small> | | DWN: W. SORAH 26-APR-96 CHK: R. TALLEY 26-APR-96 APPD: S. HOWELL 26-APR-96 | AMP AMP Incorporated Harrisburg, PA 17105-3608 |
| DIMENSIONS: mm [INCHES] | TOLERANCES UNLESS OTHERWISE SPECIFIED: 0 PLC ± 1 PLC ± 2 PLC ±0.13 [.005] 3 PLC ± 4 PLC ± ANGLES: ±1° | PRODUCT SPEC: APPLICATION SPEC: CAGE CODE: DRAWING NO: | NAME: SOCKET ASSEMBLY, DUAL READ-OUT, VERSION II, 8 BYTE, 168 POSITION SIZE: A1 CAGE CODE: 00779 DRAWING NO: 390040 |
| MATERIAL: SEE SH 1 | FINISH: | WEIGHT: CUSTOMER DRAWING | SCALE: 4:1 SHEET: 2 OF 2 REV: F |