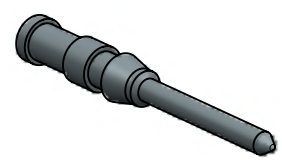


SAP.No.	Eng.No.	Material plating	ØA [mm]	Wire [mm²]	AWG	Stripping length [mm]	Molex Hand Crimp Tool
936010051	7100.4211.0	Silver plated	0.9	0.14+0.37	26+22	8	936050073 8500.7925.0  or  936050076 8500.7930.0
936010053	7100.4212.0		1.1	0.5	20		
936010055	7100.4213.0		1.3	0.75	18		
936010057	7100.4214.0		1.45	1.0	18		
936010059	7100.4215.0		1.75	1.5	16		
936010061	7100.4216.0		2.25	2.5	14		
936010052	7100.4211.1	Gold plated	0.9	0.14+0.37	26+22	8	936050065 8500.6251.0
936010054	7100.4212.1		1.1	0.5	20		
936010056	7100.4213.1		1.3	0.75	18		
936010058	7100.4214.1		1.45	1.0	18		
936010060	7100.4215.1		1.75	1.5	16		
936010062	7100.4216.1		2.25	2.5	14		

**SCALE 2:1**



<b>SYMBOLS</b> DIMENSION UNITS: mm SCALE: 5:1 GENERAL TOLERANCES (UNLESS SPECIFIED) ANGULAR TOL ± ° 4 PLACES ± 3 PLACES ± 2 PLACES ± 1 PLACE ± 0 PLACES ± DRAFT WHERE APPLICABLE MUST REMAIN WITHIN DIMENSIONS	THIS DRAWING CONTAINS INFORMATION THAT IS PROPRIETARY TO MOLEX ELECTRONIC TECHNOLOGIES, LLC AND SHOULD NOT BE USED WITHOUT WRITTEN PERMISSION			CURRENT REV DESC:													
	EC NO: 601258			DRWN: AKHEMIRI 2018/07/04						10A MALE TURNED CRIMP CONTACTS							
	CHK'D: DMERONI 2018/07/10			APPR: AMELZI 2018/09/12			PRODUCT CUSTOMER DRAWING										
	INITIAL REVISION:			DRWN: AKHEMIRI 2018/07/04			DOCUMENT NUMBER			DOC TYPE			DOC PART			REVISION	
APPR: AMELZI 2018/09/12			936010051			PSD			000			A					
FIRST ANGLE PROJECTION			DRAWING			SERIES			MATERIAL NUMBER			CUSTOMER			SHEET NUMBER		
A4-SIZE			93601			SEE TABLE			GENERAL MARKET			1 OF 1					

FORMAT: master-ib-prod-A4  
REVISION: H  
DATE: 2017/10/06