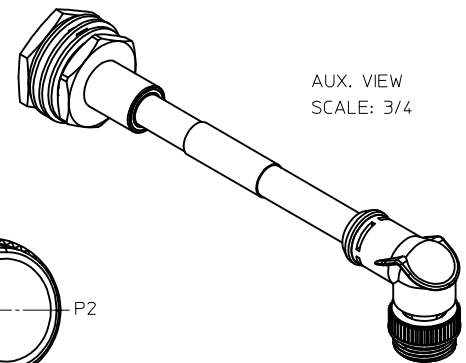


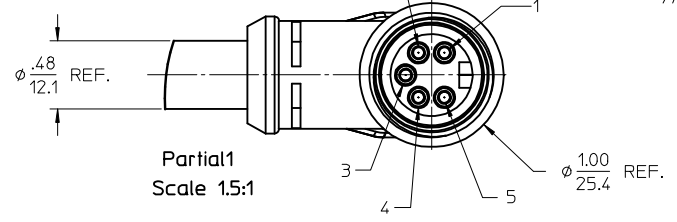
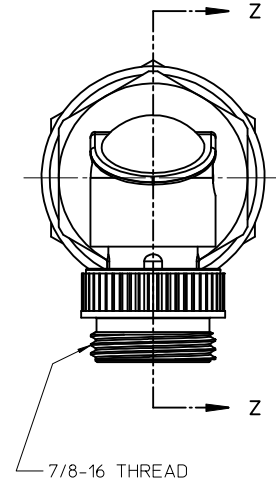
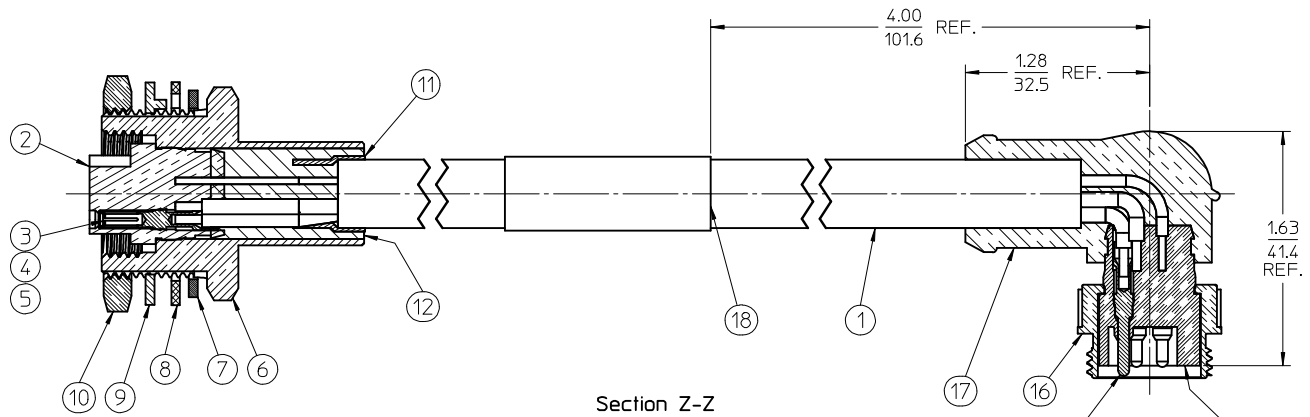
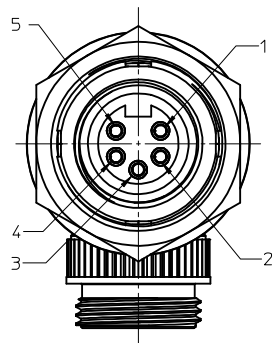
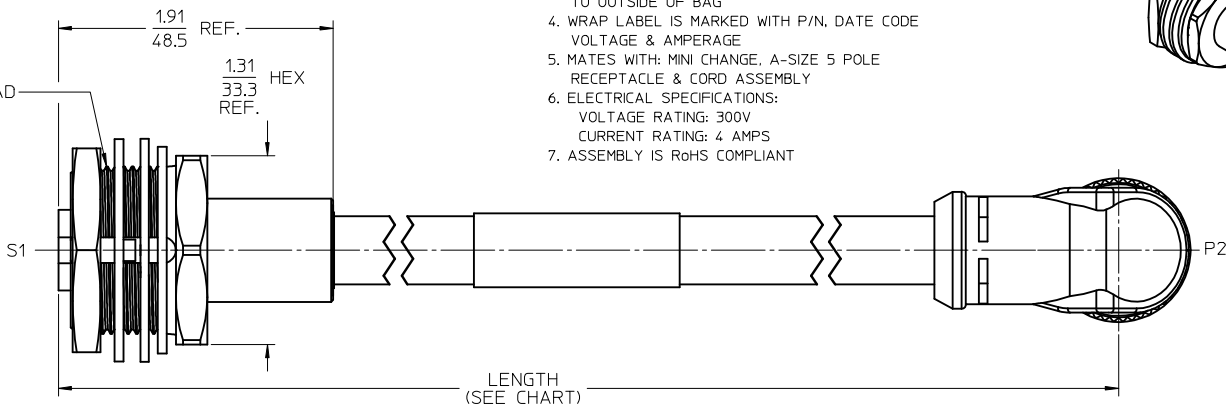
PART NUMBER	ENGINEERING NO.	LENGTH
1300390098	DN5290A-M010	3' 3.00" +2.19 - 0 [ 1.0M +55.6 - 0 ]
1300390099	DN5290A-M020	6' 6.72" +3.50 - 0 [ 2.0M +88.9 - 0 ]

- NOTES:
1. MATERIAL: SEE TABLE
  2. FINISHES: SEE TABLE
  3. CABLE ASSEMBLIES ARE BAGGED SEPARATELY IN POLY BAGS WITH BARCODE LABEL ATTACHED TO OUTSIDE OF BAG
  4. WRAP LABEL IS MARKED WITH P/N, DATE CODE VOLTAGE & AMPERAGE
  5. MATES WITH: MINI CHANGE, A-SIZE 5 POLE RECEPTACLE & CORD ASSEMBLY
  6. ELECTRICAL SPECIFICATIONS:  
VOLTAGE RATING: 300V  
CURRENT RATING: 4 AMPS
  7. ASSEMBLY IS RoHS COMPLIANT



SI		P2
1	DRAIN	1
2	RED +V	2
3	BLACK -V	3
4	WHITE CAN H	4
5	BLUE CAN L	5

WIRING DIAGRAM



ITEM	QTY.	DESCRIPTION	MATERIAL	FINISH
18	1	LABEL	PLASTIC FILM	BLACK/YELLOW
17	1	OVERMOLD	PVC	GRAY
16	1	COUPLING NUT, MALE	ZINC DIE CAST	BLACK
15	3	CONTACT PIN, 18 AWG	BRASS	GOLD PLATED
14	2	CONTACT PIN, 16 AWG	BRASS	GOLD PLATED
13	1	INSERT, MALE, 5 POLE	PVC	GRAY
12	1	POTTING	EPOXY	BLACK
11	1	SHRINK TUBE	POLYOLEFIN	
10	1	HEXNUT	BRASS	NICKEL PLATED
9	1	THRUST WASHER	ZINC	NICKEL PLATED
8	1	FLAT WASHER	NYLON	WHITE
7	1	GASKET	NITRILE	BLACK
6	1	RECEPTACLE SHELL	BRASS	NICKEL PLATED
5	5	SOCKET SLEEVE	ST. STEEL	
4	3	CONTACT SOCKET, 18 AWG	BRASS	GOLD PLATED
3	2	CONTACT SOCKET, 16 AWG	BRASS	GOLD PLATED
2	1	INSERT, FEMALE, 5 POLE	PVC	GRAY
1	1	CABLE, DEV-NET, TRUNK, 18/2, 15/2	PVC JACKET	GRAY

<b>RELEASED</b> EC NO: MNA2009-0778 DRAWN BY: DRWINRSTONE 2009/05/29 CHKD BY: WOODMAN APPR: J.MURPHY 2009/06/10	QUALITY SYMBOLS ▽=0 ▽=0	GENERAL TOLERANCES (UNLESS SPECIFIED)		DIMENSION STYLE <b>IN/MM</b>		SCALE <b>1.5:1</b>	DESIGN UNITS <b>INCH</b>	THIRD ANGLE PROJECTION															
		<table border="1"> <thead> <tr> <th></th> <th>mm</th> <th>INCH</th> </tr> </thead> <tbody> <tr> <td>4 PLACES ±</td> <td>---</td> <td>±---</td> </tr> <tr> <td>3 PLACES ±</td> <td>---</td> <td>±---</td> </tr> <tr> <td>2 PLACES ±</td> <td>---</td> <td>±.01</td> </tr> <tr> <td>1 PLACE ±</td> <td>0.3</td> <td>±---</td> </tr> </tbody> </table>			mm	INCH	4 PLACES ±		---	±---	3 PLACES ±	---	±---	2 PLACES ±	---	±.01	1 PLACE ±	0.3	±---	DRAWN BY: R.STONE DATE: 2009/05/27		TITLE: <b>MINI-CHANGE, CORD/RECEPT M 90 DEG TO FEMALE DEV-NET, TRUNK CABLE</b>	
			mm	INCH																			
		4 PLACES ±	---	±---																			
3 PLACES ±	---	±---																					
2 PLACES ±	---	±.01																					
1 PLACE ±	0.3	±---																					
APPROVED BY: J.MURPHY DATE: 2009/06/05		MATERIAL NO. <b>SEE CHART</b>		DOCUMENT NO. <b>SD-130039-006</b>																			
DRAFT WHERE APPLICABLE MUST REMAIN WITHIN DIMENSIONS		SIZE: <b>C</b>		THIS DRAWING CONTAINS INFORMATION THAT IS PROPRIETARY TO MOLEX INCORPORATED AND SHOULD NOT BE USED WITHOUT WRITTEN PERMISSION		SHEET NO. <b>1 OF 1</b>																	