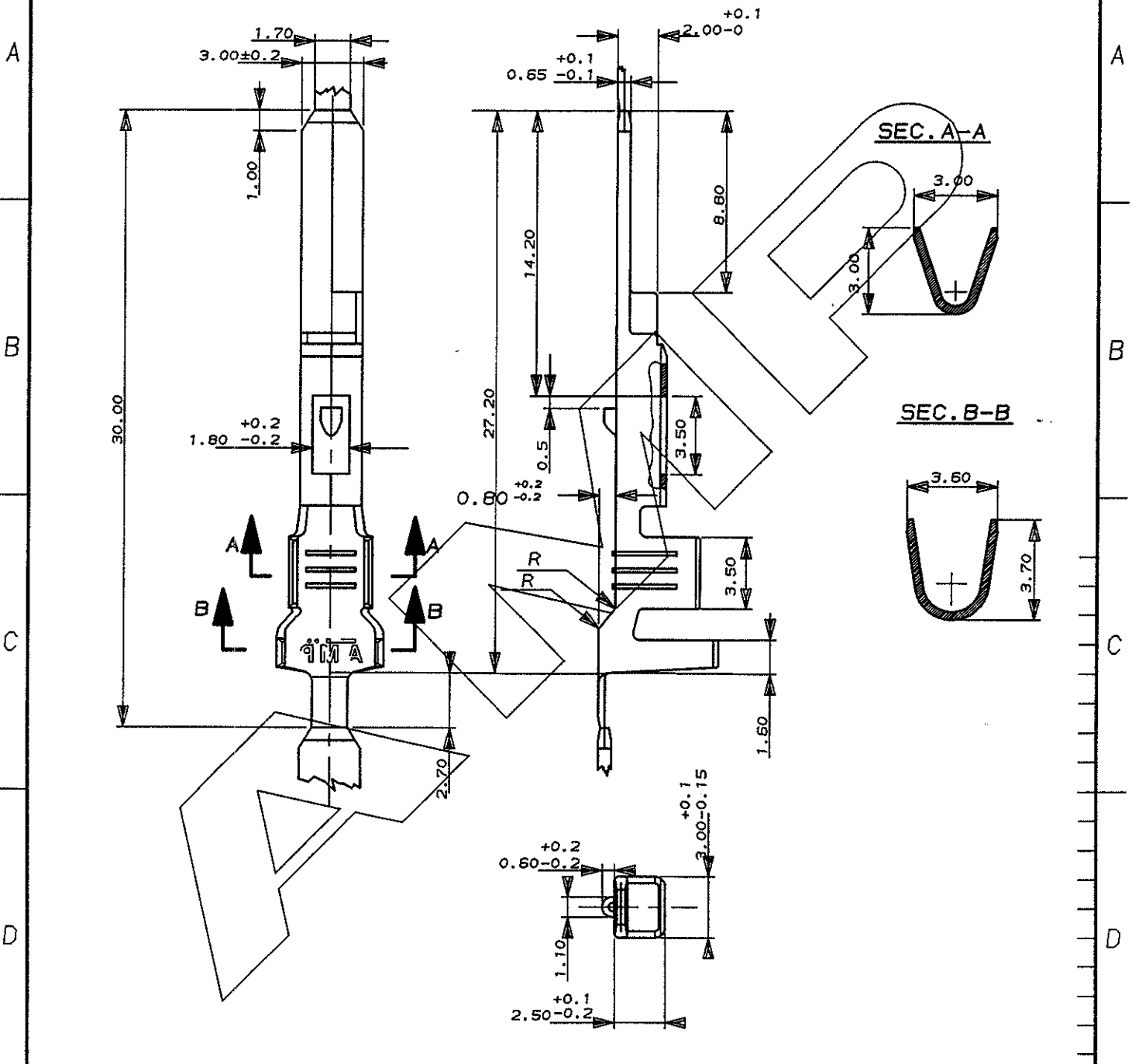


SCALA NON IMPEGNATIVA
(DO NOT SCALE)
DIMENSIONI IN mm
(DIMENSIONS IN)

METRIC

PROIEZIONE EUROPEA
(EUROPEAN PROJECTION)



Pre-stagnato (Pre-Tin)	OTTONE (Brass)	281937-1
FINITURA / COLORE (FINISH / COLOUR)	MATERIALE (MATERIAL)	NUMERO (PART NUMBER)

CUSTOMER DWG. FOR REFERENCE ONLY DISEGNO PER CLIENTE SOLO PER RIFERIMENTO

THIS DRAWING IS UNPUBLISHED RELEASE FOR PUBLICATION 19

© COPYRIGHT 19 BY AMP INCORPORATED, HARRISBURG, PA. ALL INTERNATIONAL RIGHT RESERVED. AMP PRODUCTS MAY BE COVERED BY U.S. AND FOREIGN PATENT AND/OR PATENT PENDING

TOLLERANZE: SE NON DIVERSAMENTE SPECIFICATO (TOLERANCES: UNLESS OTHERWISE SPECIFIED)	DIAM. ISOLANTE (INS. DIA. RANGE)	RANGO FILO (WIRE RANGE)	SCALA (SCALE)
± 0.3	1.5-2.4 mm	(0.5)(0.5+0.5) (1.0)(1.5)	NO

ANGOLI (ANGLES) ± 2°

AMP AMP ITALIA S.p.A.
Corso F.lli Cervi, 15
COLLEGNO (TORINO)

DIS. C. BERTINI (DR.) A-M 1988

DESCRIZIONE (DESCRIPTION) TAB MIC MK II

LOC.	SIZE	NUMERO (DWG NO)	REV.	FOGLIO (SHEET)
IA4	C-	281937	B11	01 (OF) 2

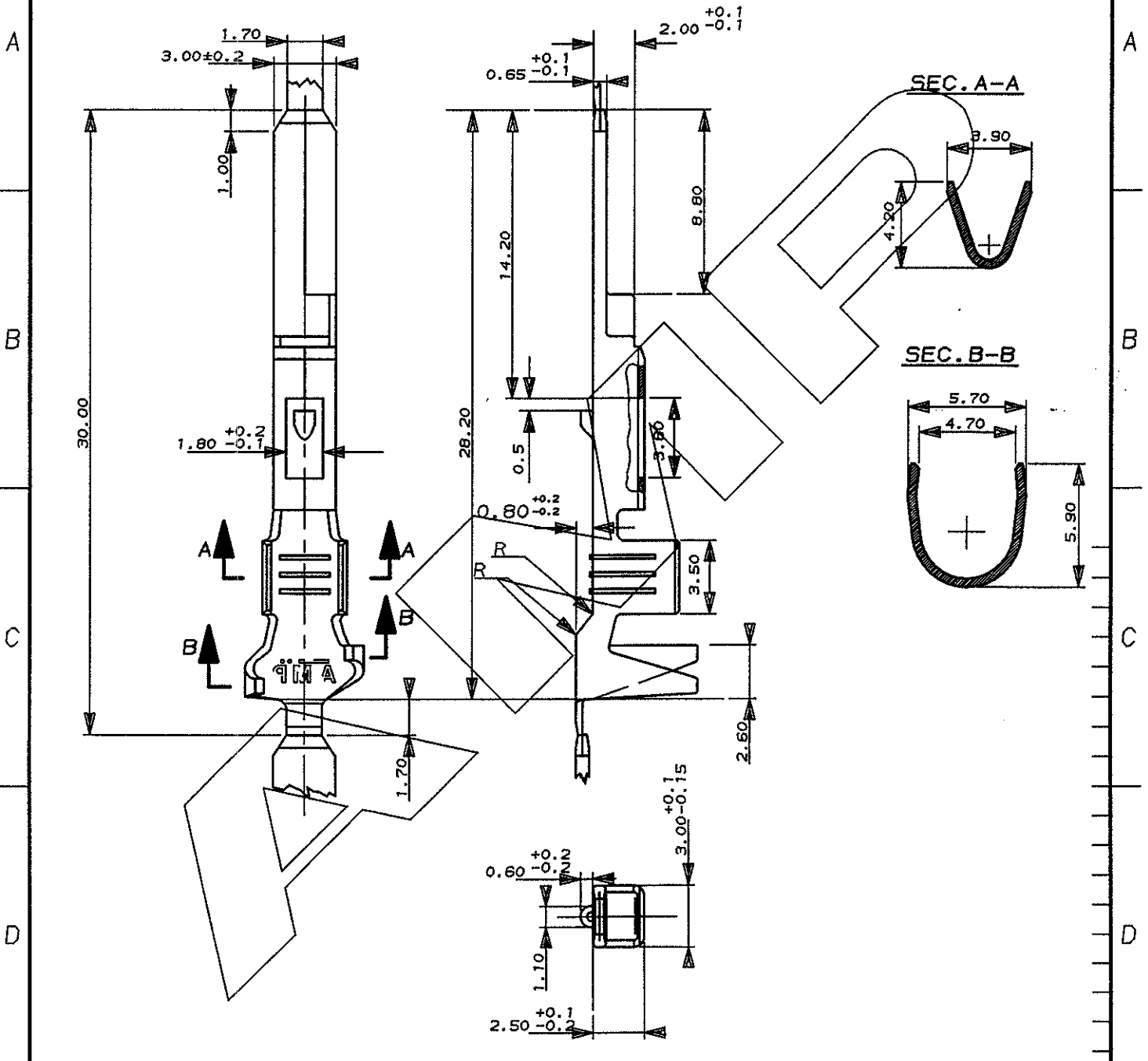
B1	REVISED FOR ET00-0072-98	DIS. DATA (DR) (DATE)
B	MODIFICATO	
A	MODIFICATO DIAMETRO ISOLANTE	
REV.	REVISIONI (REVISION RECORD)	

DISTRIBUZIONE (PRINT DIST.)

SCALA NON IMPEGNATIVA
(DO NOT SCALE)
DIMENSIONI IN mm
(DIMENSIONS IN)

METRIC

PROIEZIONE EUROPEA
(EUROPEAN PROJECTION)



Pre-stagnato (Pre-Tin)	OTTONE (Brass)	281937-3
FINITURA / COLORE (FINISH / COLOUR)	MATERIALE (MATERIAL)	NUMERO NO

CUSTOMER DWG. FOR REFERENCE ONLY DISEGNO PER CLIENTE SOLO PER RIFERIMENTO

THIS DRAWING IS UNPUBLISHED RELEASE FOR PUBLICATION 19

© COPYRIGHT 19 BY AMP INCORPORATED, HARRISBURG, PA. ALL INTERNATIONAL RIGHT RESERVED. AMP PRODUCTS MAY BE COVERED BY U.S. AND FOREIGN PATENT AND/OR PATENT PENDING

TOLLERANZE, SE NON DIVERSAMENTE SPECIFICATO (TOLERANCES, UNLESS OTHERWISE SPECIFIED)	DIAM. ISOLANTE (INS. DIA. RANGE)	RANGO FILO (WIRE RANGE)	SCALA (SCALE)
± 0.3	2.8-4.0	(1.0+1.0) (2.5) (0.5+1.0)	NO

ANGOLI (ANGLES) ± 2°

AMP AMP ITALIA S.p.A.
Corso F.lli Cervi, 15
COLLEGNO (TORINO)

DIS. C. PERTINI (DR.) 4/88

DESCRIZIONE (DESCRIPTION) TAB MIC MK II

CONT. (CHK) -

REV.	REVISIONI (REVISION RECORD)	DIS. DATA (DR) (DATE)	APP. (APP.)	LOC. SIZE (LOC) (SIZE)	NUMERO (DWG NO)	REV.	FOGLIO (SHEET)
				I A4	C-281937		2 DI (OF) 2

DISTRIBUZIONE
(PRINT DIST.)

VEDI FOGLIO 1 DI 2