

Housing - HC-B 32-TMS-100-O1STM40G-EEE - 1580518

Please be informed that the data shown in this PDF Document is generated from our Online Catalog. Please find the complete data in the user's documentation. Our General Terms of Use for Downloads are valid (<http://download.phoenixcontact.com>)



HEAVYCON-ADVANCE sleeve housing B32, for increased environmental requirements, EMC-conductive, with Allen wrench screw locking, with 1x M40x1.5 straight cable outlet



Key commercial data

Packing unit	1 PCE
Weight per Piece (excluding packing)	640.0 GRM
Custom tariff number	85389099
Country of origin	Germany

Technical data

Dimensions

Height	110 mm
Width	94 mm
Length	126 mm
Length of the assembly cutout	86 mm
Width of the assembly cutout	71 mm

Ambient conditions

Schutzart Gehäuse (IP)	IP65
	IP68 (0.2 bar/24 h)
	IP69K
Ambient temperature (operation)	-40 °C ... 125 °C

General

Note	For contact inserts HC-B16, BB32, D40, DD72, HS6, HV6, M, K
Design	B32

Housing - HC-B 32-TMS-100-O1STM40G-EEE - 1580518

Technical data

General

Housing type	Sleeve housings
Locking type	Screw locking
Torque	3 Nm (Locking screw)
Fixing screws	M6 (screw head: 5 mm Allen screw)
No. of cable exits	1
Cable exit	Straight
Screw connection	None
Type of the screw connection	1x M40
Housing material	Die-cast aluminum, salt water resistant
Housing surface material	Uncoated
Seal material	NBR, conductive
Material lock	High-grade steel
Assembly instructions	In order to guarantee that the ground conductor contact functions even when plugged in at an angle, the two panel mounting flanges must have sufficient electrical contact with the metal mounting panel.
Connection	To ensure optimum shielding, any insulating power coating must be removed from the profile gasket area on the control cabinet panel. Tightening torque of locking screw: 3 Nm.

Classifications

eCl@ss

eCl@ss 4.0	27140816
eCl@ss 4.1	27140816
eCl@ss 5.0	27143424
eCl@ss 5.1	27143424
eCl@ss 6.0	27261203
eCl@ss 7.0	27440202
eCl@ss 8.0	27440202

ETIM

ETIM 2.0	EC000437
ETIM 3.0	EC000437
ETIM 4.0	EC000437
ETIM 5.0	EC000437

UNSPSC

UNSPSC 6.01	31261501
UNSPSC 7.0901	31261501

Housing - HC-B 32-TMS-100-O1STM40G-EEE - 1580518

Classifications

UNSPSC

UNSPSC 11	31261501
UNSPSC 12.01	31261501
UNSPSC 13.2	31261501

Accessories

Accessories

Full screw connection

Cable gland - HC-K-KV-M40(19-28) - 1690655



Plastic screw connection up to 5 bar, thread length: 10 mm, cable diameter: 19 - 28 mm, WAF 46, screw connection: M40

Cable gland - HC-M-KV-M40(19-27) - 1690590



Metal screw connection up to 5 bar, thread length: 8 mm, cable diameter: 19 - 27 mm, WAF 43, screw connection: M40

Cable gland - HC-M-KV-M40(27-34) - 1607729



Metal screw connection up to 5 bar, thread length: 8 mm, cable diameter: 27 ... 34 mm, WAF 50, screw connection: M40

Cable gland - HC-EMV-KV-M40(19-28) - 1690545



EMC screw connection up to 5 bar, thread length: 15 mm, cable diameter: 19.0 - 28.0 mm, WAF 45, screw connection: M40

Housing - HC-B 32-TMS-100-O1STM40G-EEE - 1580518

Accessories

Panel mounting flange

Mounting flange - HC-B 32/48-AF - 1580524



HEAVYCON-ADVANCE mounting flange for screw locking HC B 32/48

Protective cover

Protective covers - HC-B 32-TMS-SD-IP65 - 1580539



HEAVYCON ADVANCE B32 IP65 protective cover, for panel mounting side, screw locking with 2 Allen screws, with seal, 3 mm retaining cord eyelet

Screwdriver tools

Screwdriver - SF-BIT-HEXB 5-89 - 1208911



Screw bit, hexagonal with ball head, E6.3-1/4" drive, size: Hex 5 x 89 mm, hardened, suitable for holder according to DIN 3126-F 6.3/ISO 1173

Screwdriver - SF-M BH - 1212070

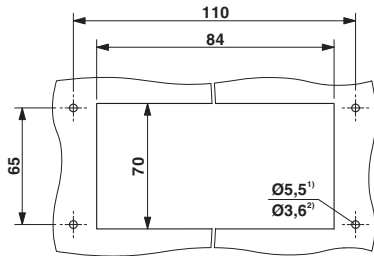


Bit screwdriver, with 1/4" quick-action chuck, handle length 119 mm, 2-component handle, with non-slip grip, suitable for bits according to DIN 3126-C 6.3 and E 6.3/ISO 1173, magnetic

Drawings

Housing - HC-B 32-TMS-100-O1STM40G-EEE - 1580518

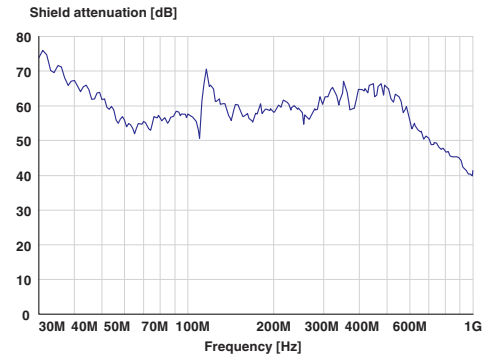
Dimensioned drawing



Mounting cutout

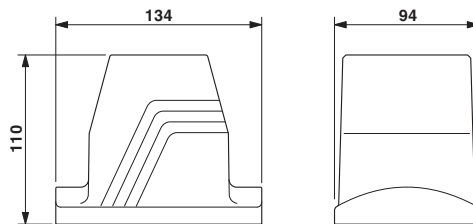
- 1) Standard M5 screw
- 2) Self-tapping (Torx® 20, M4)

Diagram



Shield attenuation

Dimensioned drawing



Dimensional drawing