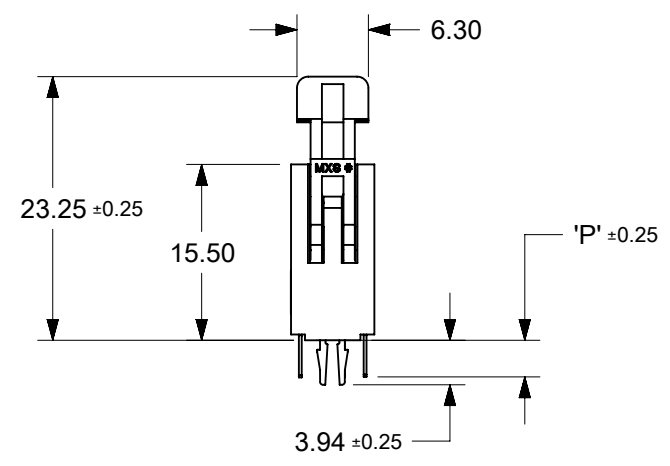
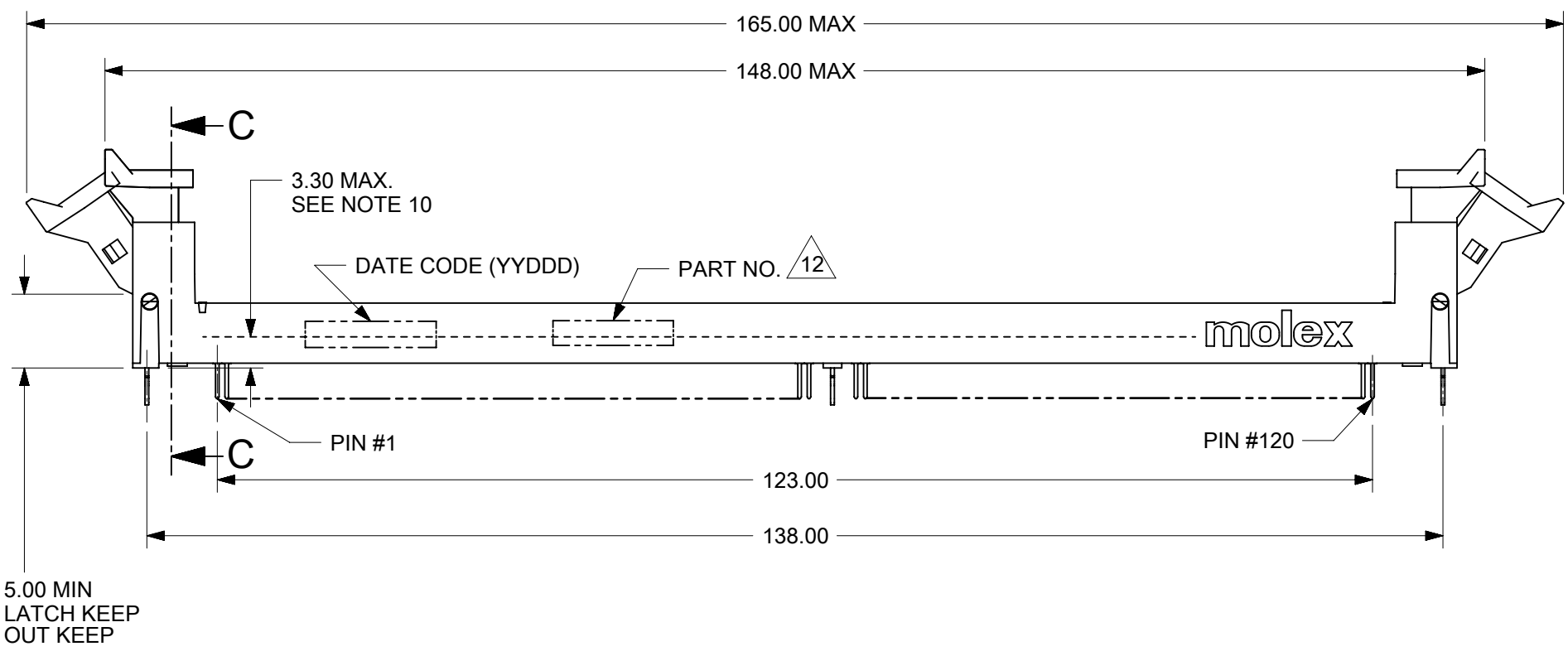
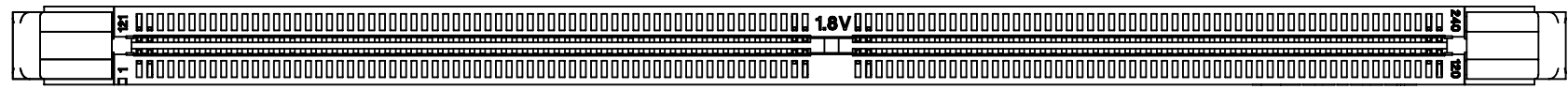
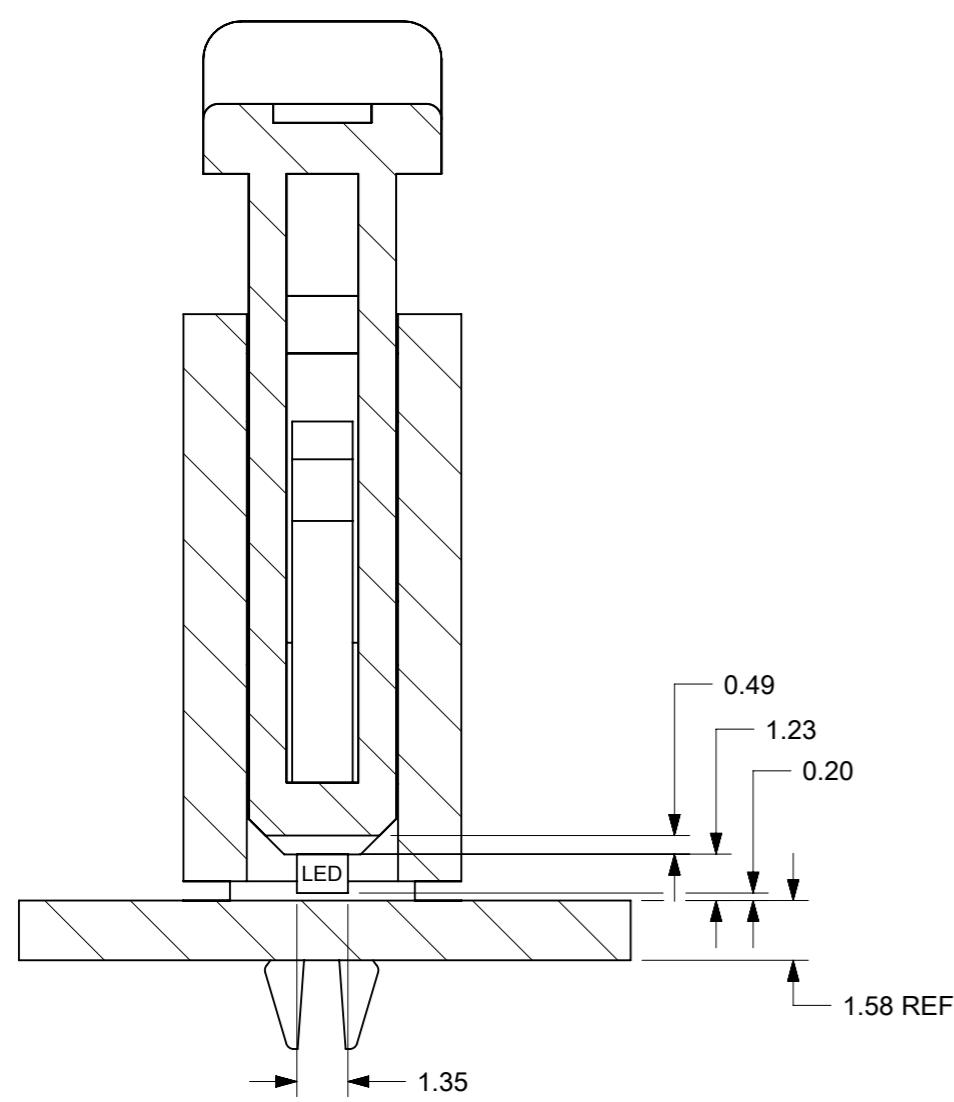
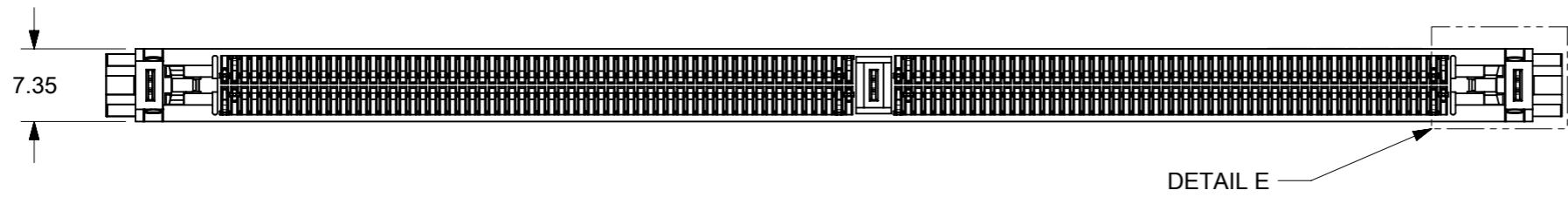


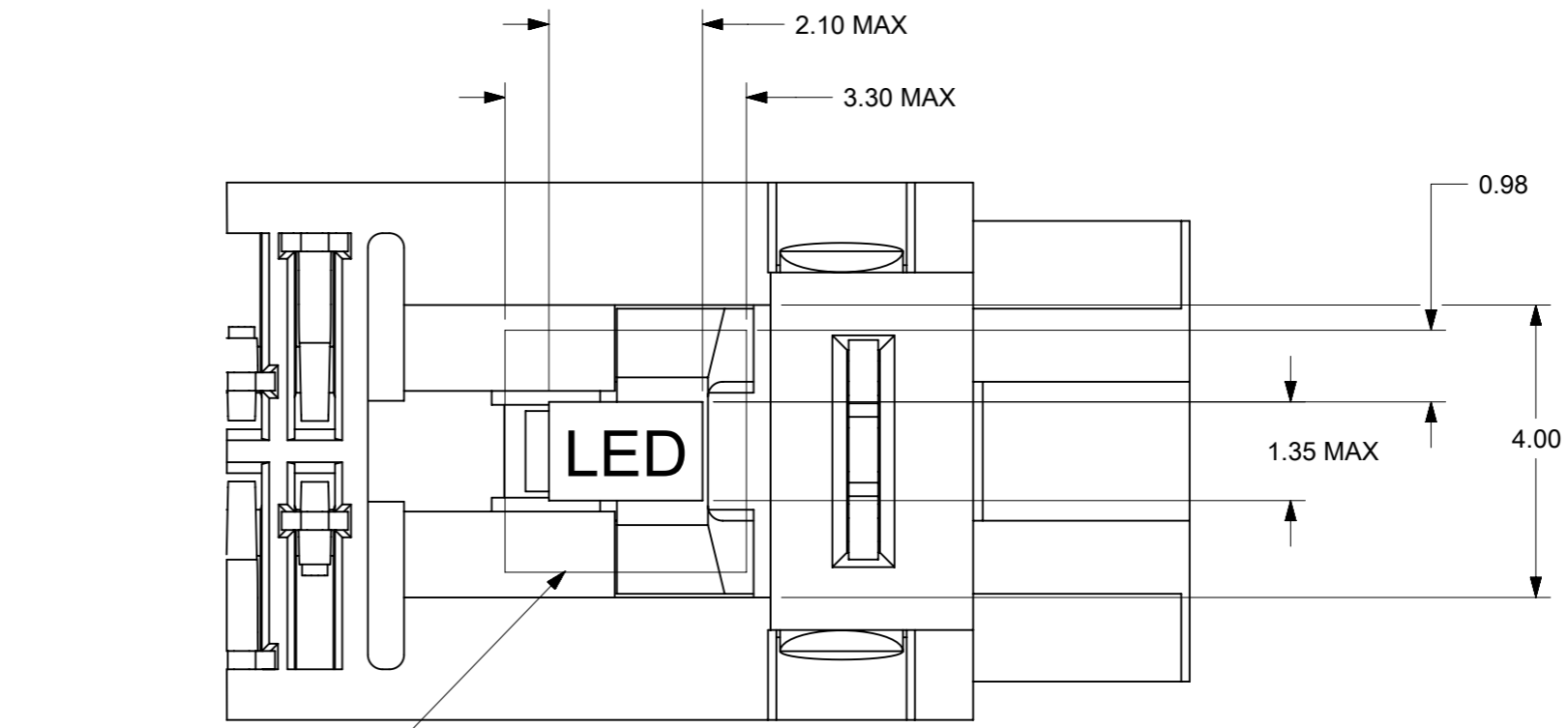
- NOTES:
- MATERIALS
 HOUSING - HIGH TEMP. NYLON GLASS FILLED, UL 94V-0
 COLOR: BLACK
 EJECTOR - HIGH TEMP. NYLON GLASS FILLED, UL 94V-0
 COLOR: SEE TABLE
 TERMINAL - COPPER ALLOY
 - PLATING - SEE TABLE IN SHEET 5 & 6.
 - CARD SLOT ACCEPTS 1.27±0.10 MM MODULE THICKNESS.
 (MEASURED OVER P.C. PADS)
 - RECOMMENDED MODULE LAYOUT SHALL BE AS PER JEDEC MO-237.
 - REFER TO PRODUCT SPEC. PS-87705-002 FOR PERFORMANCE SPECIFICATIONS.
 - PRODUCT SHALL BE PACKED IN TRAY.
 - PRODUCT SHALL HAVE DATE CODE STAMPED ON SIDE OF HOUSING
 - KEEP OUT AREA IS THE AREA WHERE THE CONNECTOR IS MOUNTED ONTO THE PCB WHICH DOES NOT INCLUDE THE LATCH.
 - REFER TO CRITICAL JEDEC INFORMATION FOR SOCKET OUTLINE PER SO-001.
 - DIMM MODULE SEATING PLANE FROM TOP OF PCB.
 - CONTACT MOLEX FOR AVAILABILITY OF PRODUCT OPTIONS.
 - PART NUMBER SHALL BE MARKED LEGIBLY AS 87705-****



THIS DRAWING CONTAINS INFORMATION THAT IS PROPRIETARY TO MOLEX ELECTRONIC TECHNOLOGIES, LLC AND SHOULD NOT BE USED WITHOUT WRITTEN PERMISSION										
DIMENSION UNITS	SCALE	CURRENT REV DESC: OBSOLETE PART NUMBER								
mm	NTS									
GENERAL TOLERANCES (UNLESS SPECIFIED)		EC NO: 655037			DDR2 DIMM, 1.00MM PITCH 240 CKTS (FORKLOCK VERSION)					
ANGULAR TOL ± 5.0°		DRWN: VLOKESHA 2021/01/11			PRODUCT CUSTOMER DRAWING					
4 PLACES ±		CHK'D: GGA 2021/03/16			DOCUMENT NUMBER					
3 PLACES ±		APPR: GGA 2021/03/16			SD-87705-001			DOC TYPE	DOC PART	REVISION
2 PLACES ± 0.2		INITIAL REVISION:			PSD 001 E					
1 PLACE ±		DRWN: CGOH 2002/07/31			MATERIAL NUMBER					
0 PLACES ±		APPR: DSOH 2002/07/31			CUSTOMER					
DRAFT WHERE APPLICABLE MUST REMAIN WITHIN DIMENSIONS		THIRD ANGLE PROJECTION	DRAWING	SERIES	SEE TABLE	GENERAL MARKET	SHEET NUMBER			
			B-SIZE	87705			1 OF 6			



SECTION C-C



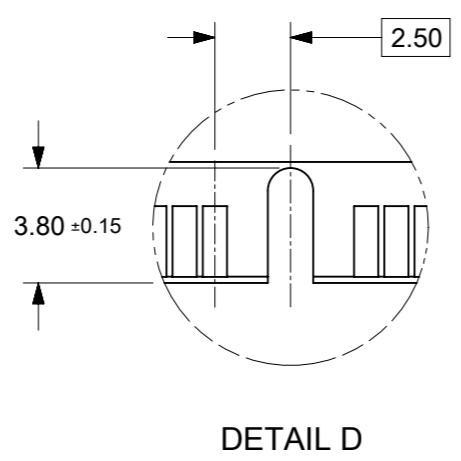
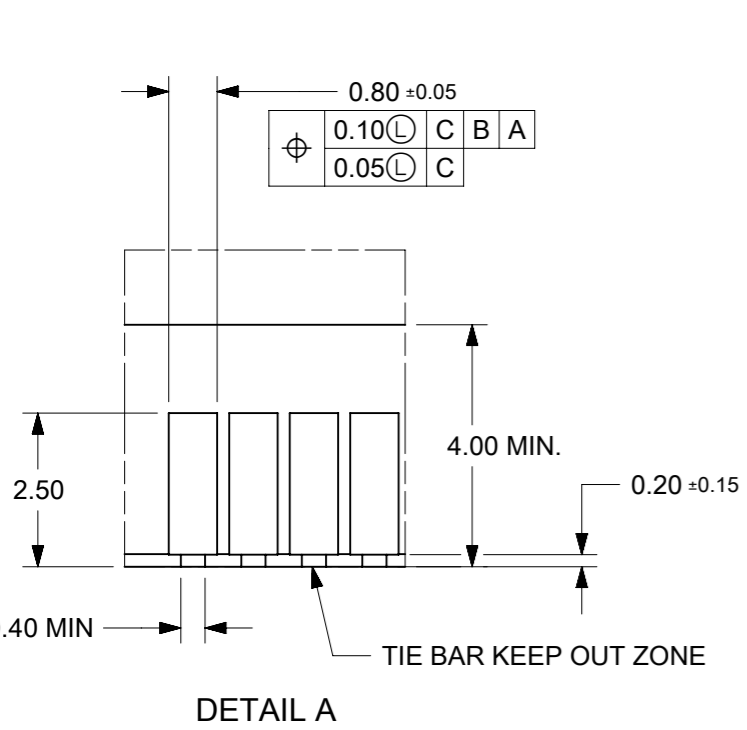
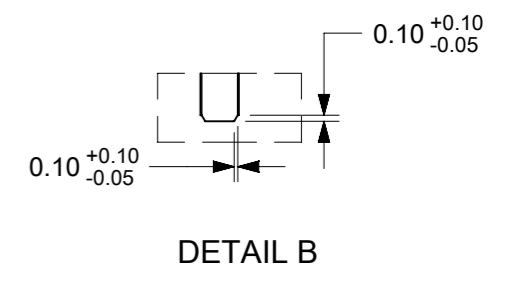
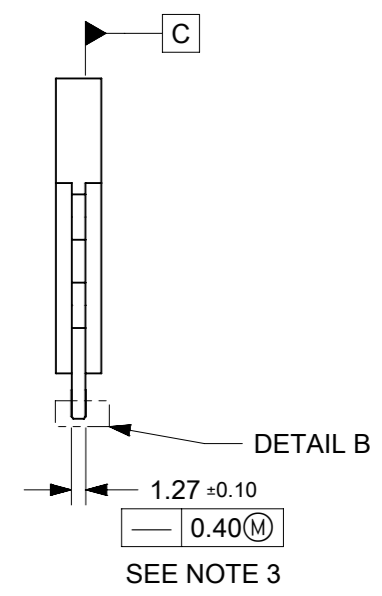
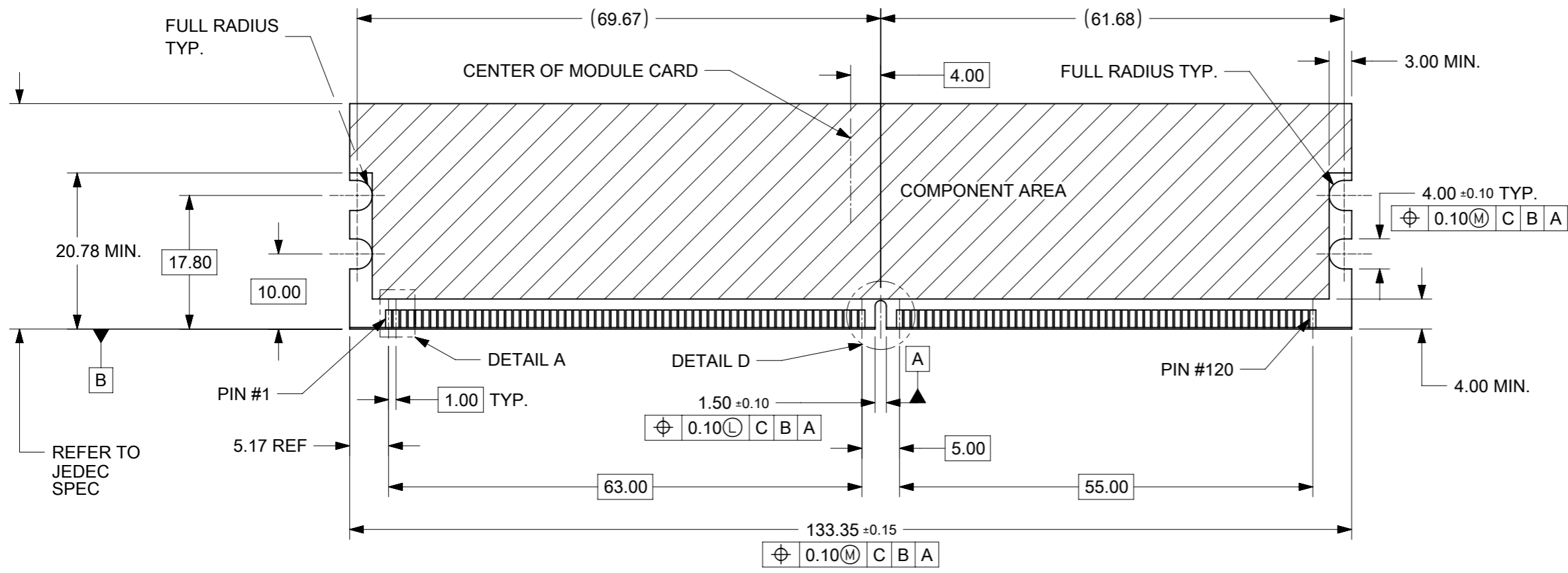
LED PLACEMENT AREA

DETAIL E

THIS DRAWING CONTAINS INFORMATION THAT IS PROPRIETARY TO MOLEX ELECTRONIC TECHNOLOGIES, LLC AND SHOULD NOT BE USED WITHOUT WRITTEN PERMISSION											
DIMENSION UNITS		SCALE		CURRENT REV DESC: OBSOLETE PART NUMBER						molex	
mm		NTS									
GENERAL TOLERANCES (UNLESS SPECIFIED)											
		MM		INCH							
4 PLACES		±		±		EC NO: 655037					
3 PLACES		±		±		DRWN: VLOKESHA		2021/01/11			
2 PLACES		±		0.2		CHK'D: GGA		2021/03/16			
1 PLACE		±		±		APPR: GGA		2021/03/16			
0 PLACES		±		±		INITIAL REVISION:					
ANGULAR TOL		±		5.0°		DRWN: CGDH		2002/05/09		DOCUMENT NUMBER	
						APPR: SKTOH		2002/07/23		SD-87705-001	
DRAFT WHERE APPLICABLE MUST REMAIN WITHIN DIMENSIONS				THIRD ANGLE PROJECTION		DRAWING		SERIES		MATERIAL NUMBER	
						A3-SIZE		87705		SEE TABLE	
						CUSTOMER		GENERAL MARKET		SHEET NUMBER	
										2 OF 6	

DOCUMENT STATUS	P1	RELEASE DATE	2021/03/16	13:03:17
-----------------	----	--------------	------------	----------

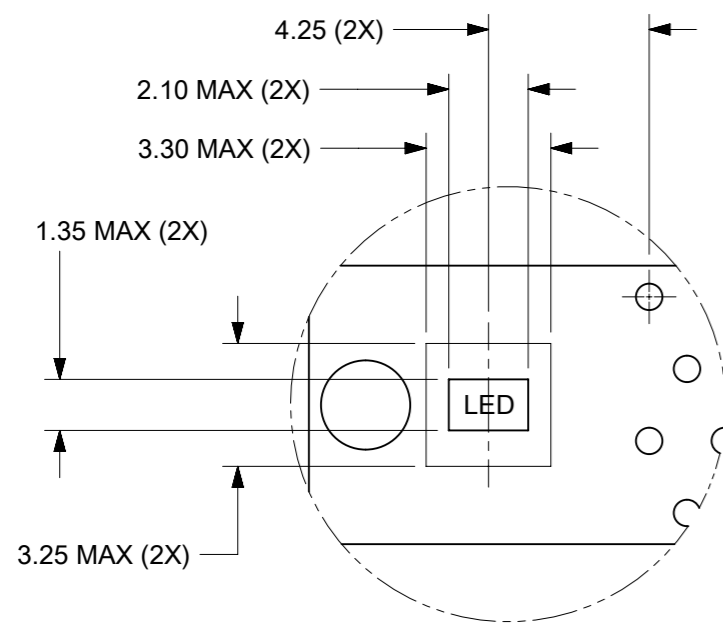
RECOMMENDED MODULE LAYOUT



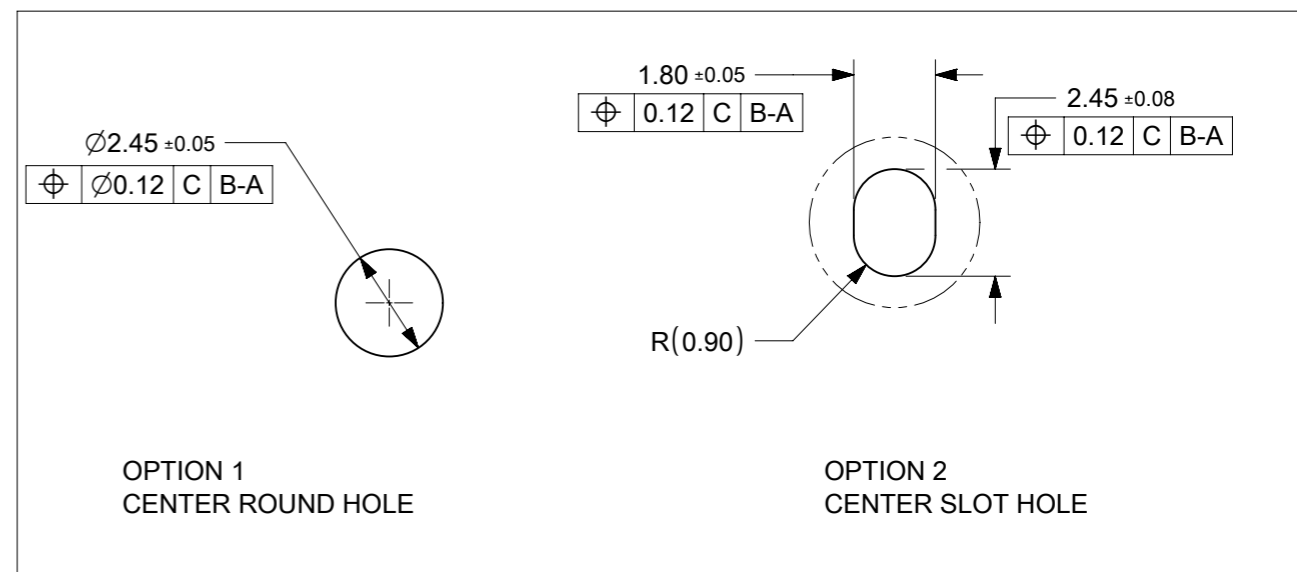
NOTES:
 1. MODULE CARD USED FOR TESTS ARE WITH 0.10MM CHAMFER.

THIS DRAWING CONTAINS INFORMATION THAT IS PROPRIETARY TO MOLEX ELECTRONIC TECHNOLOGIES, LLC AND SHOULD NOT BE USED WITHOUT WRITTEN PERMISSION		CURRENT REV DESC: OBSOLETE PART NUMBER			
GENERAL TOLERANCES (UNLESS SPECIFIED)		EC NO: 655037			
4 PLACES ±		3 PLACES ±		2022/05/09	
3 PLACES ±		2 PLACES ± 0.2		2002/07/23	
2 PLACES ±		1 PLACE ±		INITIAL REVISION:	
1 PLACE ±		0 PLACES ±		DRWN: CGDH 2002/05/09	
ANGULAR TOL ± 5.0°		APPR: SKTOH 2002/07/23		DOCUMENT NUMBER	
DRAFT WHERE APPLICABLE MUST REMAIN WITHIN DIMENSIONS		THIRD ANGLE PROJECTION		SERIES	
		DRAWING		MATERIAL NUMBER	
		A3-SIZE		CUSTOMER	
		87705		GENERAL MARKET	
		SEE TABLE		SHEET NUMBER	
				3 OF 6	

DOCUMENT STATUS	P1	RELEASE DATE	2021/03/16	13:03:17
-----------------	----	--------------	------------	----------

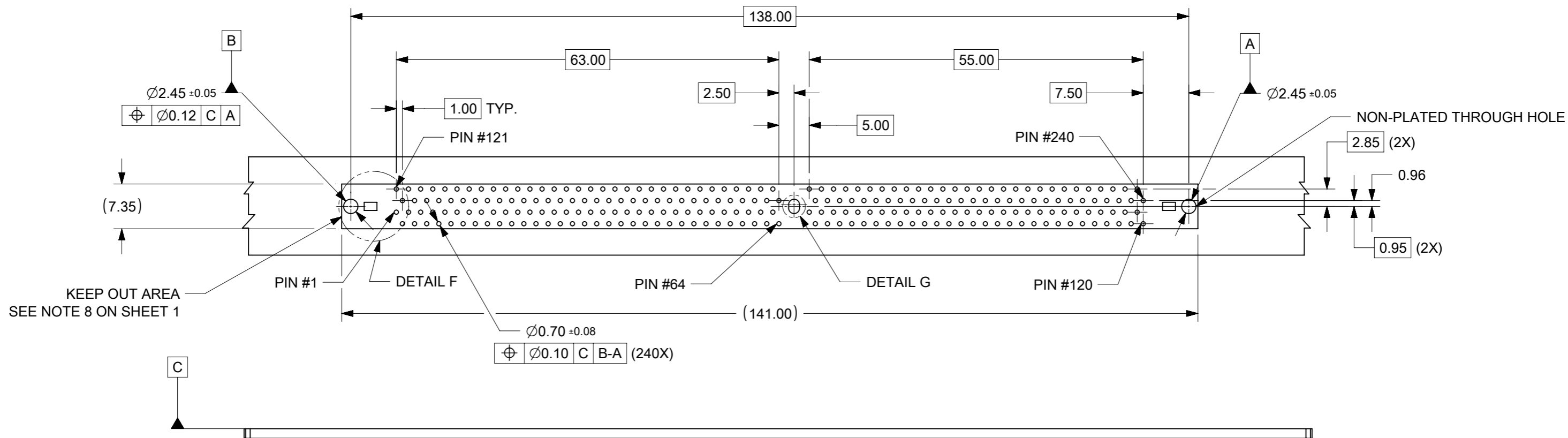


DETAIL F



DETAIL G

(SEE RECOMMENDED THICKNESS IN TABLE)
RECOMMENDED PCB LAYOUT
CONNECTOR SIDE



THIS DRAWING CONTAINS INFORMATION THAT IS PROPRIETARY TO MOLEX ELECTRONIC TECHNOLOGIES, LLC AND SHOULD NOT BE USED WITHOUT WRITTEN PERMISSION		CURRENT REV DESC: OBSOLETE PART NUMBER		molex	
DIMENSION UNITS: mm		SCALE: NTS			
GENERAL TOLERANCES (UNLESS SPECIFIED)				DDR2 DIMM, 1.00MM PITCH 240 CKTS (FORKLOCK VERSION)	
				PRODUCT CUSTOMER DRAWING	
4 PLACES ±		±		DOCUMENT NUMBER: SD-87705-001	
3 PLACES ±		±		DOC TYPE: PSD	
2 PLACES ±		0.2 ±		DOC PART: 001	
1 PLACE ±		±		REVISION: E	
0 PLACES ±		±			
ANGULAR TOL ± 5.0°				MATERIAL NUMBER: SEE TABLE	
DRAFT WHERE APPLICABLE MUST REMAIN WITHIN DIMENSIONS		THIRD ANGLE PROJECTION		CUSTOMER: GENERAL MARKET	
		DRAWING: A3-SIZE		SHEET NUMBER: 4 OF 6	
		SERIES: 87705			

F
E
D
C
B
A

PART NO.	KEY POS.	DIM 'P'	RECOMMENDED PCB THICKNESS	PLATING OPTION	LATCH COLOR	LUBRICATION
87705-0031	CENTER (1.8V)	2.67	1.57	0.03uM / 1 uIN MIN. GOLD ON CONTACT, 2.54uM/ 100uIN MIN. TIN ON SOLDERTAILS, 1.27uM/ 50uIN MIN. NICKEL UNDERPLATE	NATURAL	NO
87705-1031		3.18	2.36			
87705-3061						

THIS DRAWING CONTAINS INFORMATION THAT IS PROPRIETARY TO MOLEX ELECTRONIC TECHNOLOGIES, LLC AND SHOULD NOT BE USED WITHOUT WRITTEN PERMISSION

DIMENSION UNITS		SCALE		CURRENT REV DESC: OBSOLETE PART NUMBER		molex	
mm		NTS					
GENERAL TOLERANCES (UNLESS SPECIFIED)				EC NO: 655037		DDR2 DIMM, 1.00MM PITCH 240 CKTS (FORKLOCK VERSION)	
		MM	INCH	DRWN: VLOKESHA 2021/01/11			
4 PLACES	±		±	CHK'D: GGA 2021/03/16		PRODUCT CUSTOMER DRAWING	
3 PLACES	±		±	APPR: GGA 2021/03/16			
2 PLACES	±	0.2	±	INITIAL REVISION:		DOCUMENT NUMBER	
1 PLACE	±		±	DRWN: CGDH 2002/05/09			
0 PLACES	±		±	APPR: SKTOH 2002/07/23		DOC TYPE	DOC PART
ANGULAR TOL ± 5.0°						PSD	001
DRAFT WHERE APPLICABLE MUST REMAIN WITHIN DIMENSIONS		THIRD ANGLE PROJECTION		DRAWING	SERIES	MATERIAL NUMBER	CUSTOMER
				A3-SIZE	87705	SEE TABLE	GENERAL MARKET
							SHEET NUMBER
							5 OF 6

PART NO.	KEY POS.	DIM 'P'	RECOMMENDED PCB THICKNESS	PLATING OPTION	LATCH COLOR
87705-5051	CENTER (1.8V)	2.67	1.57	0.76uM / 30 uIN MIN. GOLD ON CONTACT, 2.54uM/ 100uIN MIN. TIN ON SOLDERTAILS, 1.27uM/ 50uIN MIN. NICKEL UNDERPLATE	CLEAR
87705-5151		3.18	2.36		
87705-6151		3.18	2.36	0.38uM / 15 uIN MIN. GOLD ON CONTACT, 2.54uM/ 100uIN MIN. TIN ON SOLDERTAILS, 1.27uM/ 50uIN MIN. NICKEL UNDERPLATE	

THIS DRAWING CONTAINS INFORMATION THAT IS PROPRIETARY TO MOLEX ELECTRONIC TECHNOLOGIES, LLC AND SHOULD NOT BE USED WITHOUT WRITTEN PERMISSION											
DIMENSION UNITS		SCALE		CURRENT REV DESC: OBSOLETE PART NUMBER			molex				
mm		NTS									
GENERAL TOLERANCES (UNLESS SPECIFIED)				EC NO: 655037 DRWN: VLOKESHA 2021/01/11 CHK'D: GGA 2021/03/16 APPR: GGA 2021/03/16 INITIAL REVISION: DRWN: CGDH 2002/05/09 APPR: SKTOH 2002/07/23			DDR2 DIMM, 1.00MM PITCH 240 CKTS (FORKLOCK VERSION)				
							PRODUCT CUSTOMER DRAWING				
							DOCUMENT NUMBER		DOC TYPE	DOC PART	REVISION
							SD-87705-001		PSD	001	E
							MATERIAL NUMBER	CUSTOMER		SHEET NUMBER	
DRAFT WHERE APPLICABLE MUST REMAIN WITHIN DIMENSIONS							THIRD ANGLE PROJECTION	DRAWING	SERIES	SEE TABLE	GENERAL MARKET

DOCUMENT STATUS	P1	RELEASE DATE	2021/03/16	13:03:17
-----------------	----	--------------	------------	----------