



# 1230/1565 MHz Ceramic Duplexer

## Part Number: AM1230-1565D1012



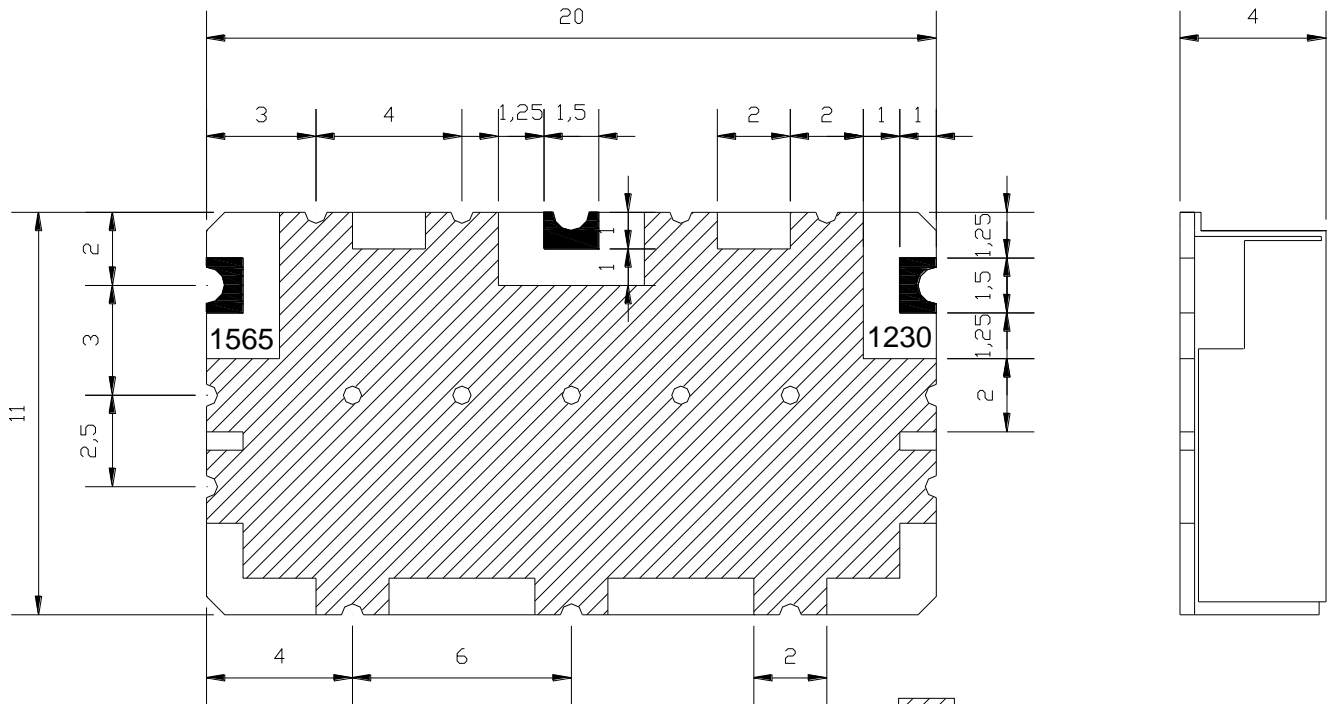
<u>Characteristics</u>	<u>Band 1</u>	<u>Band 2</u>
<b>Passband:</b>	1170-1290 MHz	1515-1615 MHz
<b>Bandwidth:</b>	Fo +/- 60 MHz	Fo +/- 45 MHz
<b>Passband Return Loss:</b>	14 dB min	14 dB min
<b>Passband Insertion Loss:</b>	2.0 dB max	2.0 dB max
<b>Passband Ripple:</b>	0.5 dB max	0.5 dB max
<b>Input / Output Impedance:</b>	50 Ohms	50 Ohms
<b>Isolation:</b>	35 dB	35 dB
<b>Power Handling:</b>	3 W	3 W

<u>Mechanical</u>	
<b>Mounting Method:</b>	SMT
<b>Dimensions:</b>	20 x 11 x 4 mm

<u>Environmental</u>	
<b>Operating Temperature:</b>	-30 to +85 deg.C
<b>Storage Temperature:</b>	-50 to +90 deg.C

**This product is RoHs compliant.**

### Outline Drawing:



GROUND

IN/OUT PORT

UNIT : mm

TOLERANCE : +/- 0.3



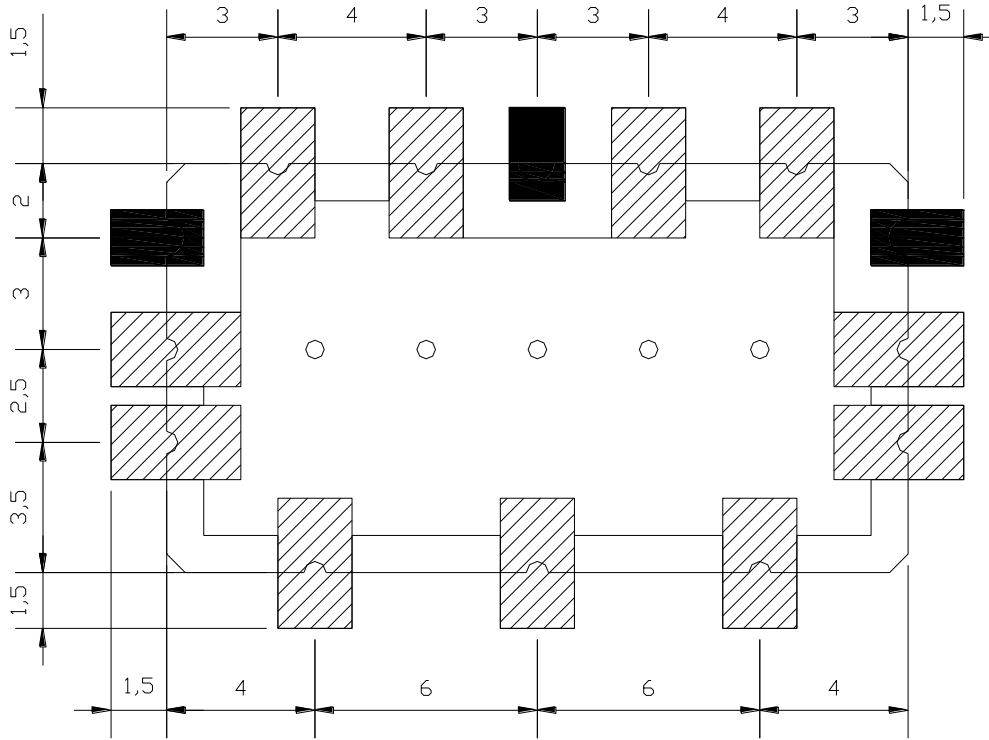
**ANATECH ELECTRONICS INC**  
RF & Microwave Filters & Products



# 1230/1565 MHz Ceramic Duplexer

## Part Number: AM1230-1565D1012



### Land Pattern:



-  GROUND
-  IN/OUT PORT
- UNIT : mm
- TOLERANCE : +/- 0.3