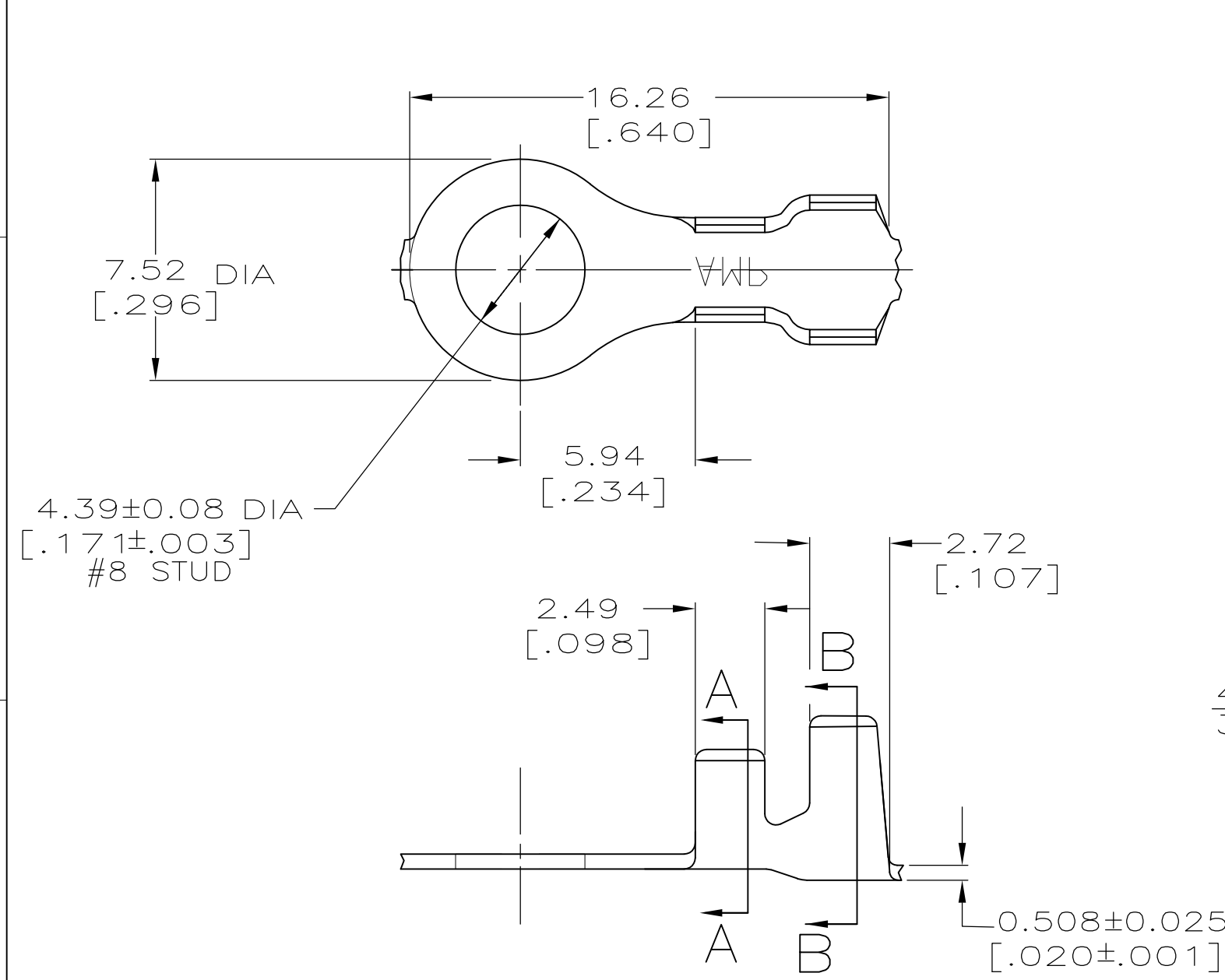
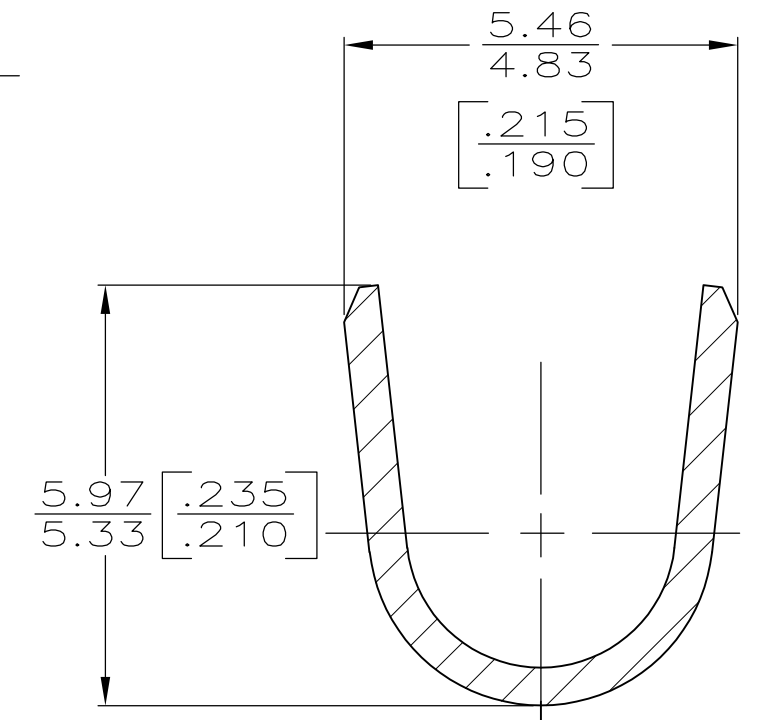
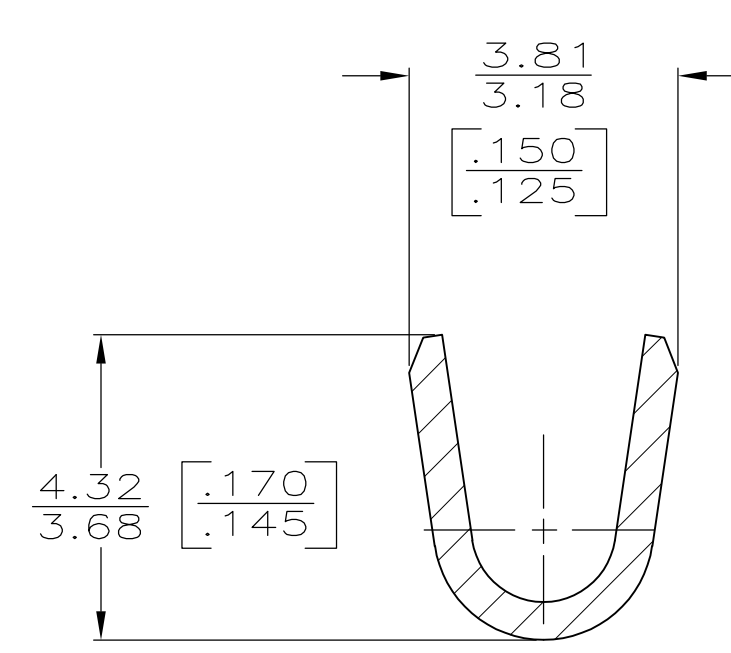


THIS DRAWING IS UNPUBLISHED. RELEASED FOR PUBLICATION
 © COPYRIGHT BY TYCO ELECTRONICS CORPORATION. ALL INTERNATIONAL RIGHTS RESERVED.

LOC	DIST	REVISIONS					
AF	50	P	LTR	DESCRIPTION	DATE	DWN	APVD
			D	REVISED PER ECR-10-006099	09JUL10	HMR	PD



1. CONTINUOUS STRIP ON REEL.



SECTION A-A
SCALE 10:1

SECTION B-B
SCALE 10:1

OBSOLETE

TIN	3.05-4.32 DIA [.120-.170]	0.8-2.0mm [18-14] AWG OR 2-0.8mm ² [18] AWG	63678-2
FINISH	INSULATION RANGE	WIRE RANGE	63678-1
			PART NO

F OR O	4.57 [.180]	4.06 [.160]	F	3.05 [.120]	1.93 [.076] 2.03 [.080] 1.83 [.072] 1.70 [.067]	(2) 0.8mm ² [18] 2.0mm ² [14] 1.3mm ² [16] 0.8mm ² [18]
TYPE	WIDTH	STRIP LENGTH ±0.38 [±.015]	TYPE	WIDTH	HEIGHT	WIRE
INSUL BARREL CRIMP			WIRE BARREL CRIMP		±0.051 [±.002]	

THIS DRAWING IS A CONTROLLED DOCUMENT.	
DIMENSIONS: mm [INCHES]	TOLERANCES UNLESS OTHERWISE SPECIFIED:
	0 PLC ± -
	1 PLC ± -
	2 PLC ± 0.25 [.010]
	3 PLC ± -
	4 PLC ± -
	ANGLES ± -
MATERIAL	FINISH
082 BRASS	SEE TABLE

DWN	P FORTNEY	9/30/92		Tyco Electronics Corporation	
CHK	JR RUTH	9/30/92		Harrisburg, PA 17105-3608	
APVD	G YETTER	9/30/92		NAME	
PRODUCT SPEC				RING	
APPLICATION SPEC			SIZE	CAGE CODE	DRAWING NO
WEIGHT	-		A3	00779	C-63678
CUSTOMER DRAWING			SCALE	SHEET	REV
			5:1	1 OF 1	D