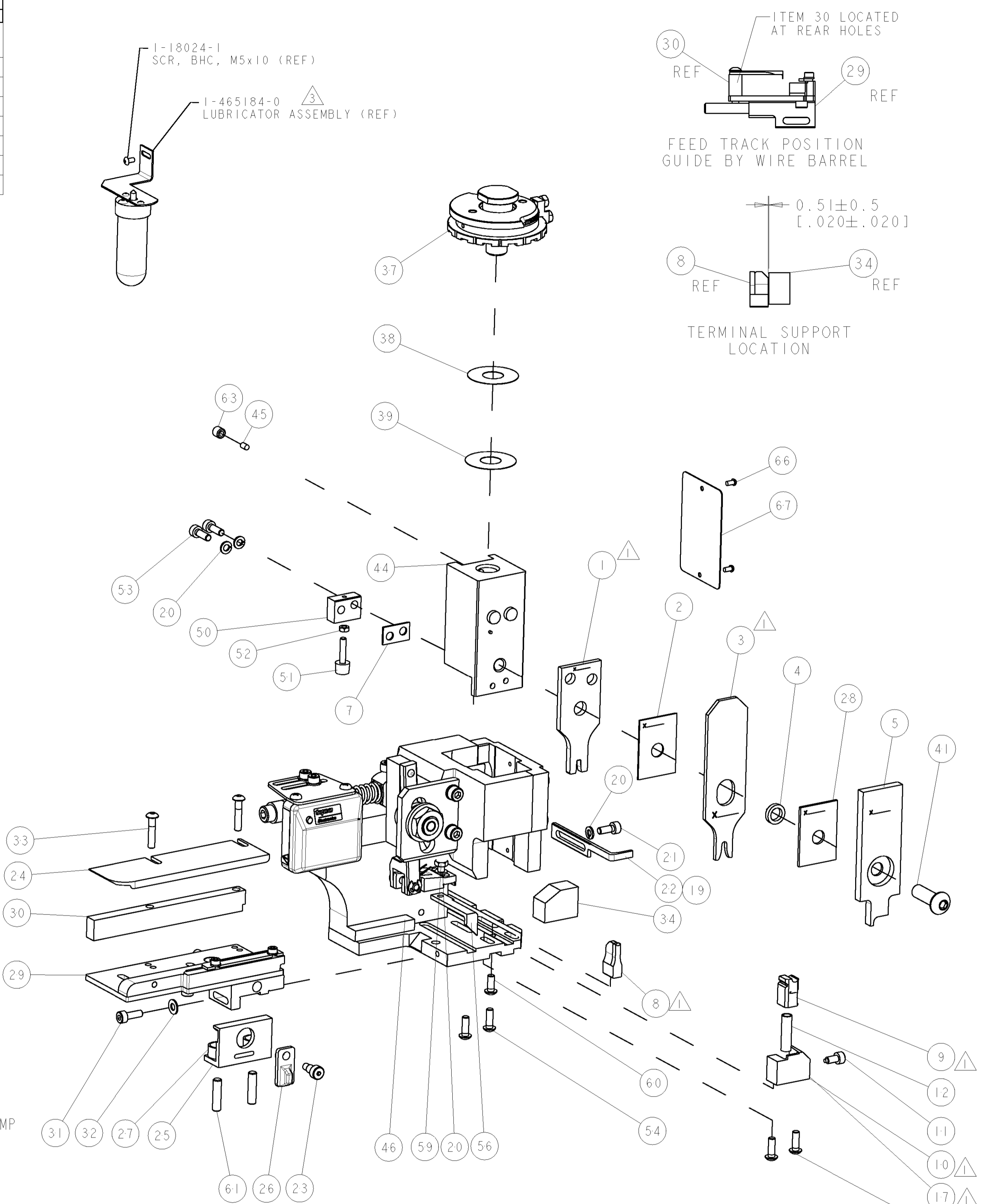


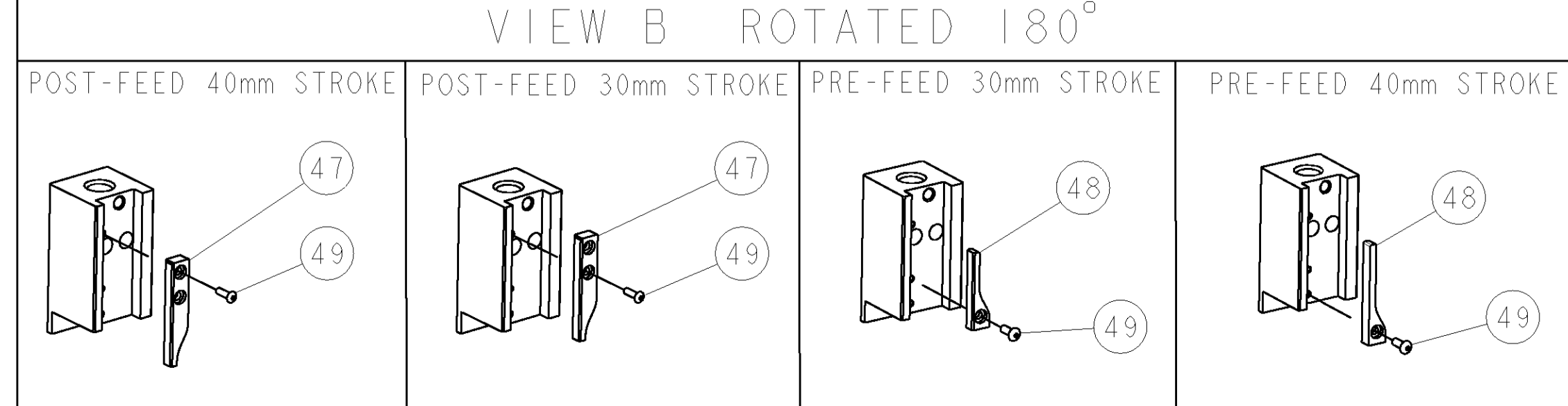
PART NUMBER	REV	TERMINATOR	FEED TYPE	DESCRIPTION
1528688-1	A	LEADMAKER	MECH POST FEED	CUTS CARRIER
1528688-2	A	BENCH	MECH PRE FEED	CUTS CARRIER
1528688-6	A	LEADMAKER	MECH POST FEED	CONTINUOUS CARRIER
7-1528688-1	A	LEADMAKER	MECH POST FEED	-1 AND SPARE PARTS
7-1528688-2	A	BENCH	MECH PRE FEED	-2 AND SPARE PARTS
7-1528688-6	A	LEADMAKER	MECH POST FEED	-6 AND SPARE PARTS
7-1528688-7	A	-	-	SPARE PARTS KIT

CRIMP DATA		DEUTSCH TERMINAL		DEUTSCH CRIMP SPEC	
TERMINAL NAME: STAMPED CONTACT PIN/SOCKET SIZE 16 1.0-2.5mm					
CRIMP	SIZE	TYPE	RANGE		
WIRE	2.79 [1.10 IN]	F	1.00-2.50mm ² or 16-12 AWG		
INSUL	3.56 [1.40 IN]	0	2.20-3.00 [1.087-1.18 IN]		
WIRE STRIP LENGTH		APPL INSTRUCTIONS			
4.44-5.72 [1.75-2.25 IN]		408-8322 & 408-8490			
TERMINAL APPL SPEC		DEUTSCH 0425-039-0000	FEED		12.70 [1.500 IN]
TERMINALS APPLIED					
TYCO PN	MANUF'S PN				
1949119-1	1062-16-1222				
1949119-2	1062-16-1244				
WIRE SIZE	CRIMP HEIGHT	REF SETTING			
2.50mm ²	1.57 [1.062 IN]	C9			
14 AWG	1.55 [1.061 IN]	D1			
2.00mm ²	1.52 [1.060 IN]	D3			
1.50mm ²	1.42 [1.056 IN]	E1			

- △ RECOMMENDED SPARE PARTS.
- 2. GREASE RAM, CAM, CAM FOLLOWER AND FEED ROD LIGHTLY.
- △ CERTAIN TERMINALS REQUIRE LUBRICATION. REFER TO THE APPLICATOR INSTRUCTION SHEET FOR MORE INFORMATION.
- 4. LUBRICATE DAILY PER THE APPLICATOR INSTRUCTION SHEET SUPPLIED WITH THE APPLICATOR.
- △ CRIMP DATA SUPPLIED BY DEUTSCH COMPANY, APART FROM INSULATION CRIMP WIDTH, WHERE STANDARD TYCO ELECTRONICS CRIMP WIDTH USED.
- △ REFER TO DEUTSCH DRAWING 0425-039-0000 FOR CRIMP HEIGHT TOLERANCES.
- △ WIRE RANGE STATED IS THAT OF TERMINAL.
- △ APPLICATOR DEVIATES FROM SPEC ON INSULATION CRIMP AND LATERAL BELLMOUTH OF WIRE CRIMP.



* WARNING
ON INSTALLATION, SET WIRE DISC TO LARGEST WIRE SIZE SETTING. USE OF SETTINGS BELOW MIN. REQUIRED CRIMP HEIGHT SETTING WILL CAUSE DAMAGE TO CRIMP TOOLING.



-77	-76	-72	-71	-6	-2	-1	PART NO	DESCRIPTION	ITEM NO
-	-	-	-	-	-	-	-	-	84
-	-	-	-	-	-	-	-	-	83
-	-	-	-	-	-	-	-	-	82
-	-	-	-	-	-	-	-	-	81
-	-	-	-	-	-	-	-	-	80
-	-	-	-	-	-	-	-	-	79
-	-	-	-	-	-	-	-	-	78
-	-	-	-	-	-	-	-	-	77
-	-	-	-	-	-	-	-	-	76
-	-	-	-	-	-	-	-	-	75
-	-	-	-	-	-	-	-	-	74

SET UP GAGE		REV A		66		REVISIONS				
LOC	DIST	P	LTR	DESCRIPTION	DATE	DRN	APPR	DATE	DRN	APPR
A	66	A	SEE ECO-06-021342		07SEP2006	DP	MC			
-	-	-	-	-	-	-	-	-	-	73
-	-	-	-	-	-	-	-	-	-	72
-	-	-	-	-	-	-	-	-	-	71
-	-	-	-	-	-	-	-	-	-	70
-	-	-	-	-	-	-	-	-	-	69
-	-	-	-	-	-	-	-	-	-	68
-	-	-	-	-	-	-	-	-	-	67
-	-	-	-	-	-	-	-	-	-	66
-	-	-	-	-	-	-	-	-	-	65
-	-	-	-	-	-	-	-	-	-	64
-	-	-	-	-	-	-	-	-	-	63
-	-	-	-	-	-	-	-	-	-	62
-	-	-	-	-	-	-	-	-	-	61
-	-	-	-	-	-	-	-	-	-	60
-	-	-	-	-	-	-	-	-	-	59
-	-	-	-	-	-	-	-	-	-	58
-	-	-	-	-	-	-	-	-	-	57
-	-	-	-	-	-	-	-	-	-	56
-	-	-	-	-	-	-	-	-	-	55
-	-	-	-	-	-	-	-	-	-	54
-	-	-	-	-	-	-	-	-	-	53
-	-	-	-	-	-	-	-	-	-	52
-	-	-	-	-	-	-	-	-	-	51
-	-	-	-	-	-	-	-	-	-	50
-	-	-	-	-	-	-	-	-	-	49
-	-	-	-	-	-	-	-	-	-	48
-	-	-	-	-	-	-	-	-	-	47
-	-	-	-	-	-	-	-	-	-	46
-	-	-	-	-	-	-	-	-	-	45
-	-	-	-	-	-	-	-	-	-	44
-	-	-	-	-	-	-	-	-	-	43
-	-	-	-	-	-	-	-	-	-	42
-	-	-	-	-	-	-	-	-	-	41
-	-	-	-	-	-	-	-	-	-	40
-	-	-	-	-	-	-	-	-	-	39
-	-	-	-	-	-	-	-	-	-	38
-	-	-	-	-	-	-	-	-	-	37
-	-	-	-	-	-	-	-	-	-	36
-	-	-	-	-	-	-	-	-	-	35
-	-	-	-	-	-	-	-	-	-	34
-	-	-	-	-	-	-	-	-	-	33
-	-	-	-	-	-	-	-	-	-	32
-	-	-	-	-	-	-	-	-	-	31
-	-	-	-	-	-	-	-	-	-	30
-	-	-	-	-	-	-	-	-	-	29
-	-	-	-	-	-	-	-	-	-	28
-	-	-	-	-	-	-	-	-	-	27
-	-	-	-	-	-	-	-	-	-	26
-	-	-	-	-	-	-	-	-	-	25
-	-	-	-	-	-	-	-	-	-	24
-	-	-	-	-	-	-	-	-	-	23
-	-	-	-	-	-	-	-	-	-	22
-	-	-	-	-	-	-	-	-	-	21
-	-	-	-	-	-	-	-	-	-	20
-	-	-	-	-	-	-	-	-	-	19
-	-	-	-	-	-	-	-	-	-	18
-	-	-	-	-	-	-	-	-	-	17
-	-	-	-	-	-	-	-	-	-	16
-	-	-	-	-	-	-	-	-	-	15
-	-	-	-	-	-	-	-	-	-	14
-	-	-	-	-	-	-	-	-	-	13
-	-	-	-	-	-	-	-	-	-	12
-	-	-	-	-	-	-	-	-	-	11
-	-	-	-	-	-	-	-	-	-	10
-	-	-	-	-	-	-	-	-	-	9
-	-	-	-	-	-	-	-	-	-	8
-	-	-	-	-	-	-	-	-	-	7
-	-	-	-	-	-	-	-	-	-	6
-	-	-	-	-	-	-	-	-	-	5
-	-	-	-	-	-	-	-	-	-	4
-	-	-	-	-	-	-	-	-	-	3
-	-	-	-	-	-	-	-	-	-	2
-	-	-	-	-	-	-	-	-	-	1

DIMENSIONS:		TOLERANCES UNLESS OTHERWISE SPECIFIED:	
mm [IN]		0 PLC	±
		1 PLC	±
		2 PLC	±
		3 PLC	±
		4 PLC	±
		ANGLES	±

MATERIAL	FINISH	WEIGHT	CUSTOMER DRAWING
-	-	-	-

DATE	BY	APP'D	NAME	SCALE	SHEET	OF	REV
07AUG2006	PROUSE	07AUG2006	M. CLIFFORD	3:5	1	1	A

TYCO ELECTRONICS	DESCRIPTION	ITEM NO
FINE ADJUST SIDE FEED HDI APPLICATOR		