

# E020 Series Sealed Snap-acting Momentary Pushbutton Switches



A

Pushbutton

## Features/Benefits

- Process sealed with disposable splashproof boot
- Long life contact design
- Snap-fitting plunger available
- RoHS compliant models available

## Typical Applications

- Instrumentation
- Telecommunications and networking equipment
- Computers and peripherals



Models Available

## Specifications

**CONTACT RATING:** B contact material (EX25 Models): 0.4 VA max. @ 20 V AC or DC max. G contact material (EX21 Models): 1 AMP @120 V AC or 28 V DC or 0.4 VA max. @ 20 V AC or DC max. Note: Break-before-make contacts. Multi-pole contacts do not make and break simultaneously. See page A-26 for additional ratings.

**ELECTRICAL LIFE:** 60,000 make-and-break cycles at full load.

**CONTACT RESISTANCE:** Below 50 m21Ω typ. initial @ 2-4 V DC, 100 mA, for both silver and gold plated contacts.

**INSULATION RESISTANCE:** 10<sup>9</sup>Ω min.

**DIELECTRIC STRENGTH:** 1000 Vrms min. @ sea level.

**OPERATING TEMPERATURE:** -30°C to 75°C.

**CAP INSTALLATION FORCE:** 10 lbs. max. permissible.

**SOLDERABILITY:** Per MIL-STD-202F method 208D, or

EIA RS-186E method 9 (1 hour steam aging).

**NOTE:** Any models supplied with P, R, B or G contact material are RoHS compliant.

**NOTE:** Specifications and materials listed above are for switches with standard options. For information on specific and custom switches, consult Customer Service Center.

## Materials

**CASE & BUSHING:** Glass filled nylon 6/6, flame retardant (UL 94V-0).

**PLUNGER:** Glass filled nylon or glass filled polyester (PBT) (UL 94V-0).

**SWITCH SUPPORT:** Brass or steel, matte-tin.

**SWITCH SUPPORT RETAINER:** Stainless steel.

**N.O. & N.C. CONTACTS:** EX25 MODELS: B contact material: Copper alloy, with gold plate over nickel plate. EX21 MODELS: G contact material: Coin silver, with gold plate over nickel plate. See page A-26 for additional contact materials.

**COMMON CONTACTS & ALL TERMINALS:** Copper alloy, with gold plate over nickel plate. See page A-26 for additional contact materials.

**TERMINAL SEAL:** Epoxy.

**DISPOSABLE BOOT:** Vinyl splashproof boot supplied standard. Remove and discard only after soldering and cleaning processes are complete.

## Build-A-Switch

To order, simply select desired option from each category and place in the appropriate box. Available options are shown and described on pages A-22 thru A-28. For additional options not shown in catalog, consult our Customer Service Center. All models are process sealed to withstand machine soldering temperatures and pressure wash cleaning methods.



### Switch Function

- E121** SPDT On-Mom. 1 Amp
- E221** DPDT On-Mom. 1 Amp
- E125** SPDT On-Mom. 0.4VA
- E225** DPDT On-Mom. 0.4VA

### Plunger

- S** .282" high
- M** .331" high, snap-fitting
- S1** .332" high

### Bushing

- D1** Unthreaded
- D3** .180" high, unthreaded

### Terminations

- A** Right angle, PC thru-hole
- AV2** Vertical right angle, PC thru-hole
- C** PC Thru-hole
- A3** Right angle, snap-in, PC thru-hole
- AV3** Vertical right angle, snap-in, PC thru-hole
- V3** .460" high, V-bracket
- V4** .630" high, V-bracket
- V6** .460" high, V-bracket
- V8** .953" high, V-bracket
- V31** .460" high, snap-in V-bracket
- V41** .630" high, snap-in V-bracket
- V61** .460" high, snap-in V-bracket

### Contact Material

- B** Gold
- G** Gold over silver
- P** Gold, matte-tin
- R** Gold over silver, matte-tin

### Seal

- E** Epoxy and disposable splashproof boot



5 Aug 20

Dimensions are shown: Inches (mm)  
Specifications and dimensions subject to change



# E020 Series Sealed Snap-acting Momentary Pushbutton Switches

## SWITCH FUNCTION

NO. POLES	MODEL NO.	SWITCH FUNCTION		CONNECTED TERMINALS		SCHEMATIC
		POS. 1	POS. 2	POS. 1	POS. 2	
SP	<b>E121</b>	ON	MOM.	1-3	1-2	
	<b>E125</b>	ON	MOM.			
<b>SPDT</b> <p>Part number shown: E121SD1CGE</p>						
DP	<b>E221</b>	ON	MOM.	1-3,4-6	1-2,4-5	
	<b>E225</b>	ON	MOM.			
<b>DPDT</b> <p>Part number shown: E221SD1CBE</p>						

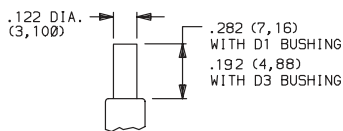
MOM. = Momentary

E121, E221 models with all options when ordered with G or R contact material.

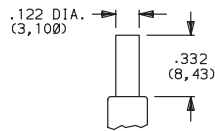
EX25 models must be ordered with B or P contact material.  
EX21 models must be ordered with G or R contact material.

## PLUNGER

**S** .282" HIGH

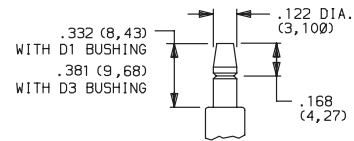


**S1** .332" HIGH



Not Available with D1 bushing.

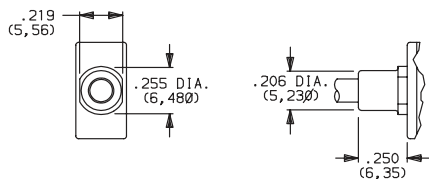
**M** .332" HIGH SNAP-FITTING



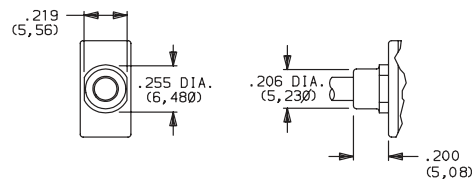
NOTE: Caps available for all plunger options, see page A-27.

## BUSHING

**D1** UNTHREADED

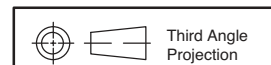


**D3** .180" HIGH UNTHREADED



Not available with S1 actuator.

NOTE: Disposable splashproof vinyl over actuator and bushing supplied std., see page A-26.



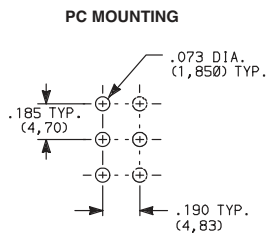
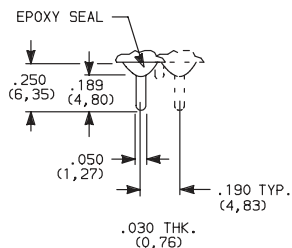
# E020 Series Sealed Snap-acting Momentary Pushbutton Switches



A Pushbutton

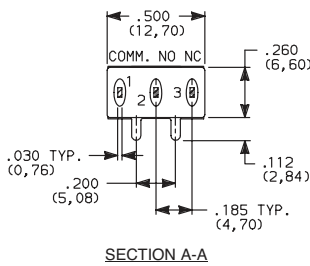
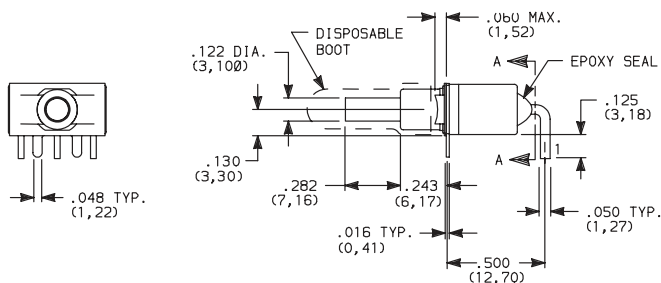
## TERMINATIONS

### C PC THRU-HOLE



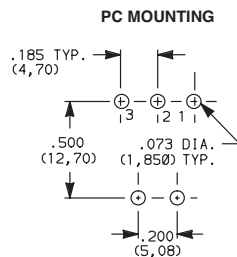
### SPDT and DPDT

### A RIGHT ANGLE, PC THRU-HOLE



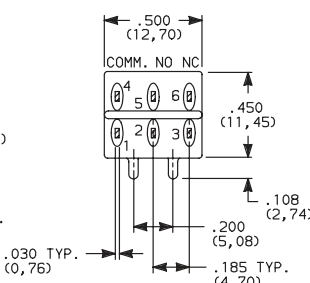
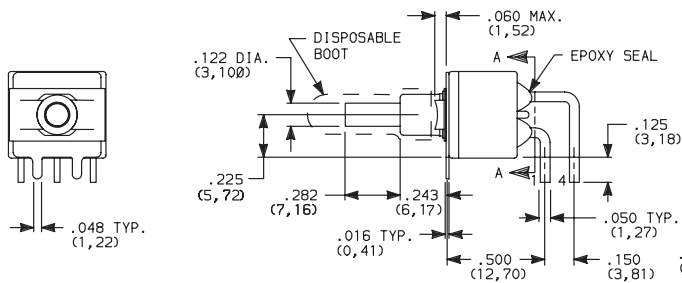
E121SD1AGE SPDT

### A3 RIGHT ANGLE, SNAP-IN, PC THRU-HOLE



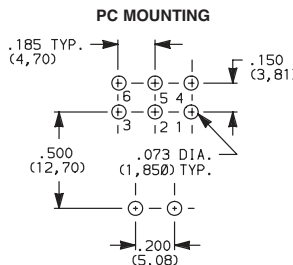
NOTE: Terminal bend radii and lead-in manufacturing option.

### A RIGHT ANGLE, PC THRU-HOLE

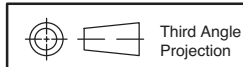


E221SD1AGE DPDT

### A3 RIGHT ANGLE, SNAP-IN, PC THRU-HOLE



NOTE: Terminal bend radii and lead-in manufacturing option.



5 Aug 20

Dimensions are shown: Inches (mm)  
Specifications and dimensions subject to change



# E020 Series Sealed Snap-acting Momentary Pushbutton Switches

## TERMINATIONS



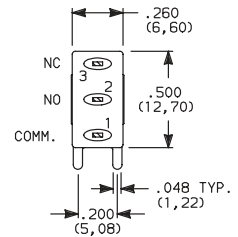
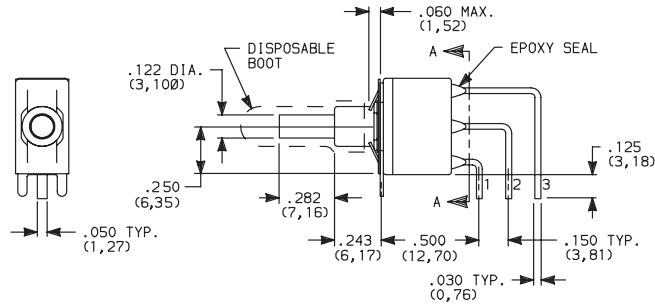
Pushbutton

A

**AV2** VERTICAL RIGHT ANGLE, PC THRU-HOLE, .150" PITCH

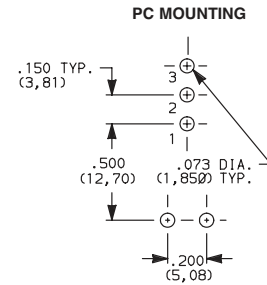
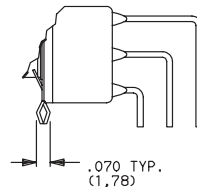
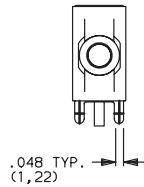


**E121SD1AV2GE**  
SPDT



SECTION A-A

**AV3** VERTICAL RIGHT ANGLE, SNAP-IN, PC THRU-HOLE, .150" PITCH

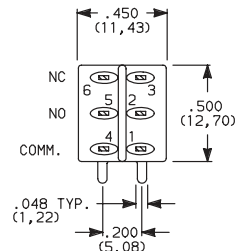
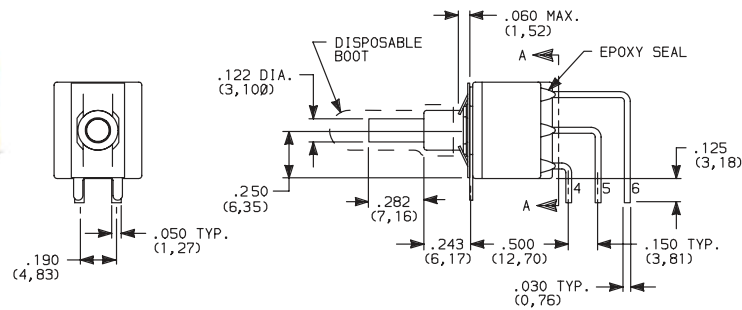


NOTE: Terminal bend radii and lead-in manufacturing option.

**AV2** VERTICAL RIGHT ANGLE, PC THRU-HOLE, .150" PITCH

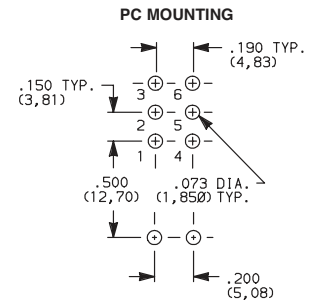
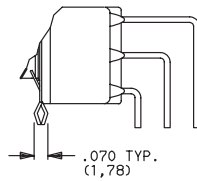
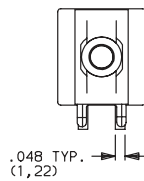


**E221SD1AV2GE**  
DPDT

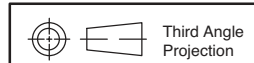


SECTION A-A

**AV3** VERTICAL RIGHT ANGLE, SNAP-IN, PC THRU-HOLE, .150" PITCH



NOTE: Terminal bend radii and lead-in manufacturing option.



5 Aug 20

Dimensions are shown: Inches (mm)  
Specifications and dimensions subject to change

# E020 Series Sealed Snap-acting Momentary Pushbutton Switches

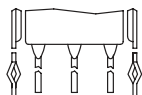
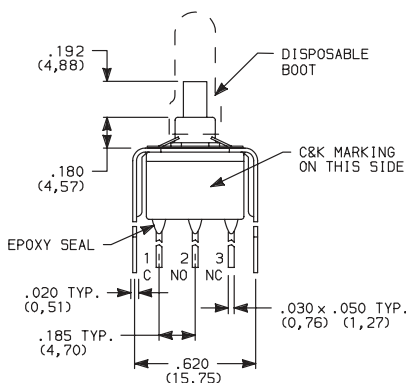


A Pushbutton

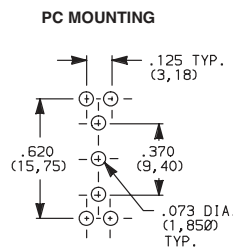
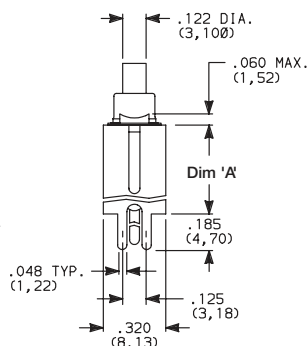
## TERMINATIONS

**V3, V4** VERTICAL MOUNT, V-BRACKET

**V31, V41** VERTICAL MOUNT, V-BRACKET, SNAP-IN



SNAP-IN

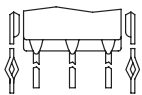
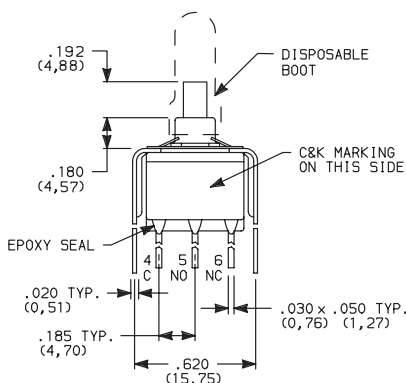


E121SD3\_GE SPDT

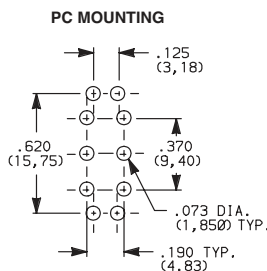
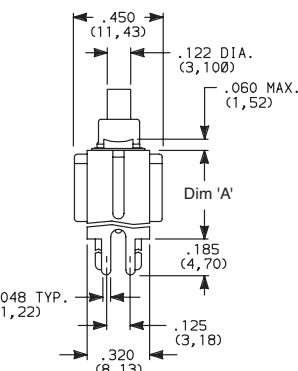
OPTION CODE	DIM 'A'
V3, V31	.460 (11,68)
V4, V41	.630 (16,00)

**V3, V4** VERTICAL MOUNT, V-BRACKET

**V31, V41** VERTICAL MOUNT, V-BRACKET, SNAP-IN



SNAP-IN

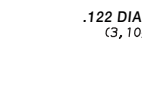
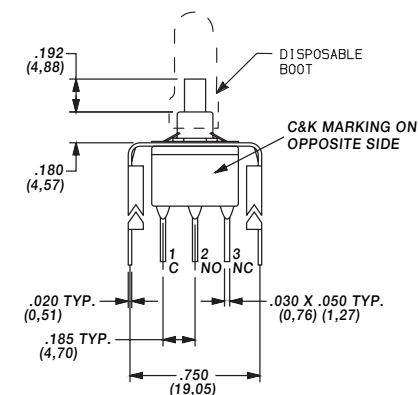


E221SD3\_GE DPDT

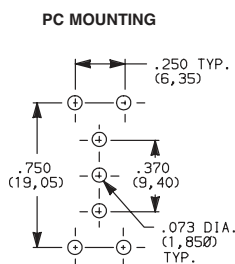
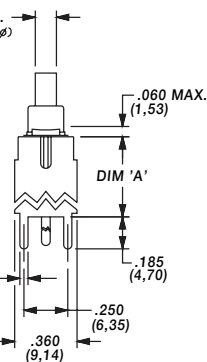
OPTION CODE	DIM 'A'
V3, V31	.460 (11,68)
V4, V41	.630 (16,00)

**V6, V8** VERTICAL MOUNT, V-BRACKET

**V61, V81** VERTICAL MOUNT, V-BRACKET, SNAP-IN

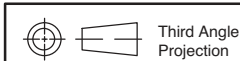


SNAP-IN



E121SD3\_GE SPDT

OPTION CODE	DIM 'A'
V6, V61	.460 (11,68)
V8, V81	.953 (24,21)



Third Angle Projection



5 Aug 20

Dimensions are shown: Inches (mm)  
Specifications and dimensions subject to change



# E020 Series Sealed Snap-acting Momentary Pushbutton Switches

Pushbutton

A

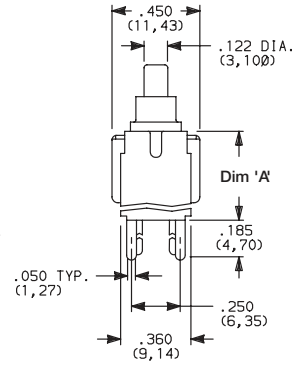
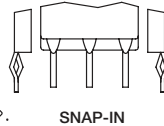
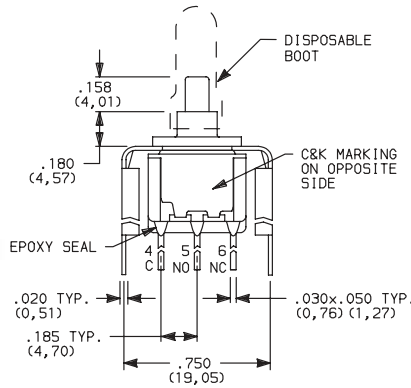
## TERMINATIONS

**V6, V8** VERTICAL MOUNT, V-BRACKET

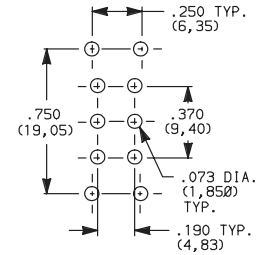
**V61, V81** VERTICAL MOUNT, V-BRACKET, SNAP-IN



E221SD3V6GE DPDT



### PC MOUNTING



OPTION CODE	DIM 'A'
<b>V6, V61</b>	.460 (11,68)
<b>V8, V81</b>	.953 (24,21)

## CONTACT MATERIAL

OPTION CODE	CONTACT MATERIAL	TERMINAL PLATING	RATINGS	
<b>B</b>	GOLD <sup>1</sup>	GOLD <sup>1</sup>	LOW LEVEL/DRY CIRCUIT	EX25 MODELS ONLY: 0.4 VA MAX. @ 20 V AC OR DC MAX.
<b>P</b>		MATTE-TIN <sup>4</sup>		
<b>G</b>	GOLD OVER SILVER <sup>2,3</sup>	GOLD <sup>3</sup>	LOW LEVEL/DRY CIRCUIT OR POWER	EX21 MODELS ONLY: 0.4 VA MAX @ 20 V AC OR DC MAX. OR 1 AMP @ 120 V AC OR 28 V DC.
<b>R</b>		MATTE-TIN <sup>4</sup>		

\* Note: See Technical Data section of this catalog for RoHS compliant and compatible definitions and specifications.

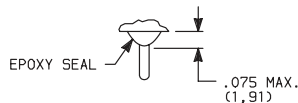
- <sup>1</sup> CONTACTS & TERMINALS: Copper alloy, with gold plate over nickel plate.
- <sup>2</sup> N.O. AND N.C. CONTACTS: Coin silver, with gold plate over nickel plate.
- <sup>3</sup> COMMON CONTACTS & ALL TERMINALS: Copper alloy, with gold plate over nickel plate.
- <sup>4</sup> TERMINALS: Copper alloy, with matte-tin alloy over nickel plate.

NOTE: Any models supplied with P, R, B or G contact material are RoHS compliant.

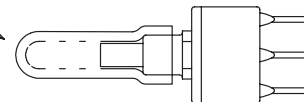
E121, E221 models us with all options when ordered with mandatory G, or R contact material.  
P or B contact material must be ordered with EX25 models.  
R or G contact material must be ordered with EX21 models.

## SEAL

**E** EPOXY SEAL AND DISPOSABLE SPLASHPROOF BOOT



Disposable splashproof boot supplied standard. Remove and discard boot *only after* soldering and cleaning processes are complete.



Dimensions are shown: Inches (mm)  
Specifications and dimensions subject to change



5 Aug 20

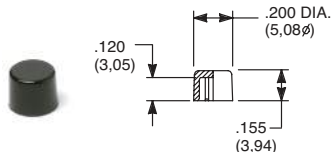
# E020 Series Sealed Snap-acting Momentary Pushbutton Switches



A  
Pushbutton

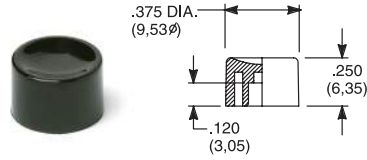
## AVAILABLE HARDWARE

Cap



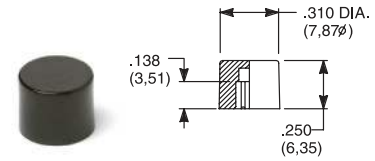
**PART NO.**  
**708901000** WHITE  
**708902000** BLACK  
**708903000** RED  
 Material: Nylon  
 Finish: Gloss

Cap



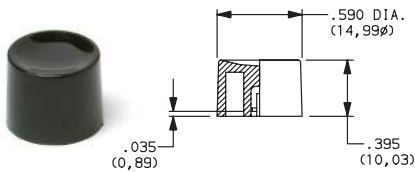
**PART NO.**  
**752701000** WHITE  
**752702000** BLACK  
**752703000** RED  
 Material: Nylon  
 Finish: Gloss

Cap



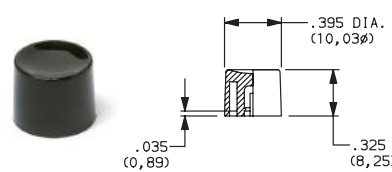
**PART NO.**  
**801801000** WHITE  
**801802000** BLACK  
**801803000** RED  
 Material: Nylon  
 Finish: Gloss

Cap, Snap-fitting plunger



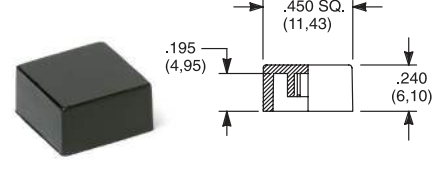
**PART NO.**  
**452D01000** WHITE  
**452D02000** BLACK  
**452D03000** RED  
 Material: Nylon  
 Finish: Gloss

Cap, Snap-fitting plunger



**PART NO.**  
**894101000** WHITE  
**894102000** BLACK  
**894103000** RED  
 Material: Nylon  
 Finish: Gloss

Cap



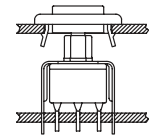
**PART NO.**  
**484601000** WHITE  
**484602000** BLACK  
**484603000** RED  
 Material: Nylon  
 Finish: Gloss

**PART NO.**  
**798201000** WHITE  
**798202263** BLACK  
**798203000** RED  
 Material: Nylon  
 Finish: Matte

NOTE: Other cap colors available, consult Customer Service Center.

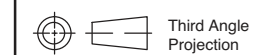
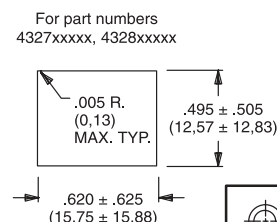
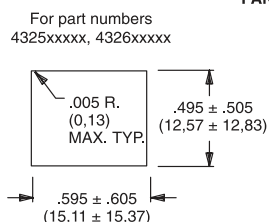
Frames snap into panel opening and are independent of switch mounting. Accurate positioning of the PC mounted switch relative to the panel opening is necessary to provide proper clearance between actuator and frame. Available in two basic styles and four panel thicknesses .047-.125 in. Material: Nylon. Finish: Matte.

TYPICAL APPLICATION



.090" (2,29) PANEL THK.    .125" (3,18) PANEL THK.  
**PART NO.**                      **PART NO.**  
**432702263**                      **432802263** BLACK

### PANEL MOUNTING



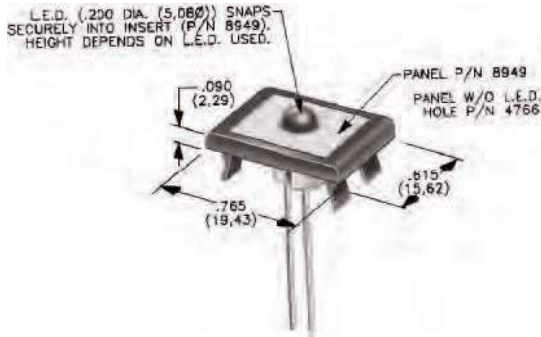


# E020 Series Sealed Snap-acting Momentary Pushbutton Switches

## AVAILABLE HARDWARE

### PANEL INSERTS

Above frames (part nos. 432XXXXXX) are also available with insert which accepts LED for indicator light assembly. Order insert separately from frame. Blank insert panel (without hole for LED) also available. LED not included.



PANEL INSERT  
WITH HOLE FOR LED

PART NO.  
**894902000**

BLANK PANEL INSERT  
WITHOUT HOLE FOR LED

PART NO.  
**476602000** BLACK

Special colors, custom markings available, consult Customer Service Center.