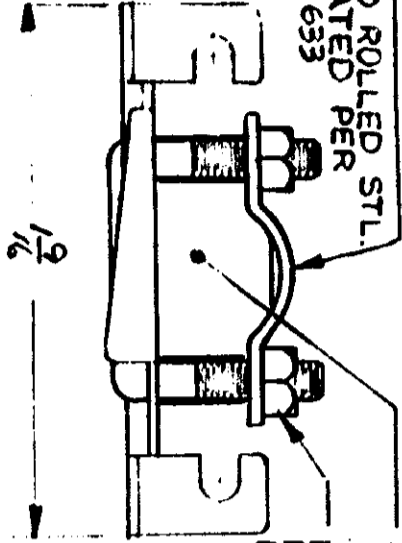


CABLE CLAMP
 MATERIAL: COLD ROLLED
 FINISH: ZINC PLATED PER
 ASTM-B-633



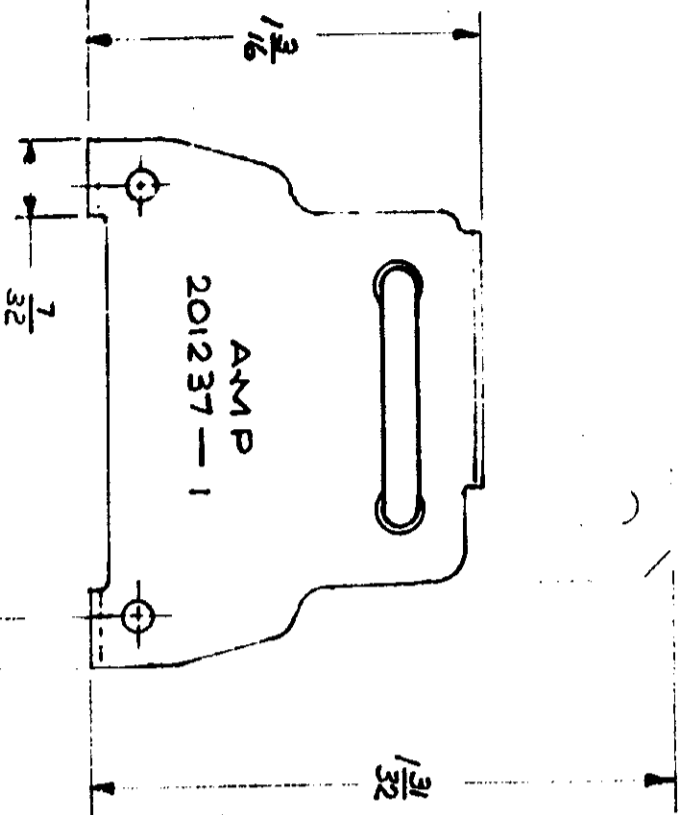
MAX CLAMP AREA
 250 SQ. INCH.
 NUT (2 REQUIRED)
 MATERIAL: COLD ROLLED STEEL
 FINISH: ZINC PLATED PER ASTM-B-633

ALTERNATIVE POSITION OF
 U BOLT FOR 90° CABLE OUTLET
 INSTALL AS SHOWN
 USING CLAMP 892.

BRACKET
 MATERIAL: STAINLESS STEEL PER QQ-S-766

PROTECTIVE SLEEVE (2 REQUIRED)
 MATERIAL: FLEXIBLE PLASTIC
 COLOR: BLACK

U BOLT USED AS SHOWN
 FOR 180° (FROM BLOCK)
 CABLE OUTLET.
 MATERIAL: STAINLESS STEEL PER ASTM-A-582



20 PLACE BLOCK.

(1) 1.45 SHOWN.

PRINTED 39 DIMENSIONS IN INCHES DO NOT SCALE PRINT

REV	DESCRIPTION	DATE	BY	CHK
F	REV. PER ECN R-053	REA	304	12/30/53
E	REV. PER ECN J-936	DE	204	1/24/54
D	REVISED U-116	MJS	JK	4/25/53
C	REVISED S-791	MJS	JK	10/4/52
B	REVISED 557	KJ	310	2/16/52
A	RELEASED	KJ	-	1/29/51
---	REORGN	DR	310	2/17/51
---	REVISION RECORD	DR	CHK	DATE

NO.	DESCRIPTION
1	REQUIRED PER ASSEMBLY

DESIGN NUMBER: C-201237
 DR: *W. B. ...*
 DATE: 2-27-51
 CHK: *W. B. ...*

NAME: SEE CALLOUTS
 MATERIAL AND FINISH: SEE CALLOUTS
 WIRE - RANGE - INSULATION: SEE CALLOUTS
 TOLERANCE EXCEPT AS NOTED: ± 1/16"

CLASS: M
 TYPE: B
 NO: C-201237
 REMARKS: CUSTOMER COPY REFERENCE ONLY
 AMP INCORPORATED
 MARIETTA, PENNA.

NAME: 20 PLACE MINIATURE RECTANGULAR STRAIN RELIEF CLAMP