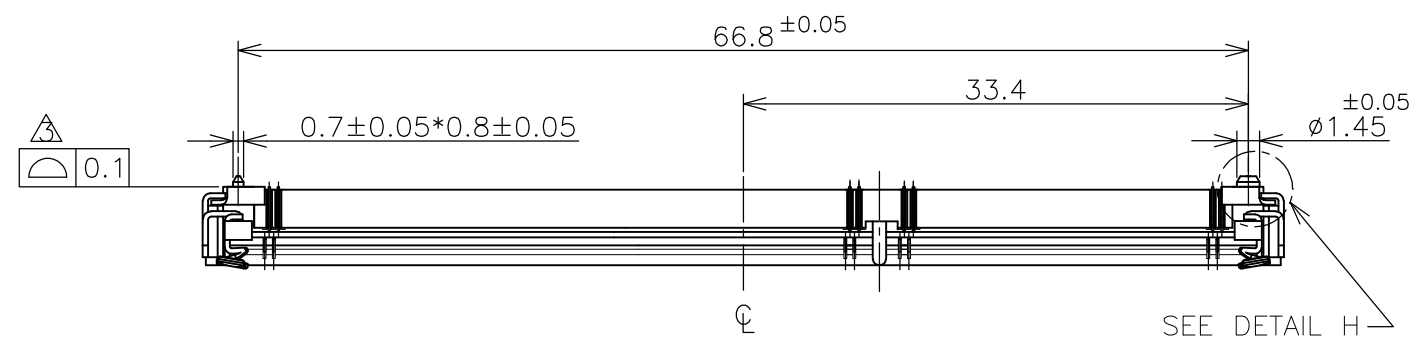
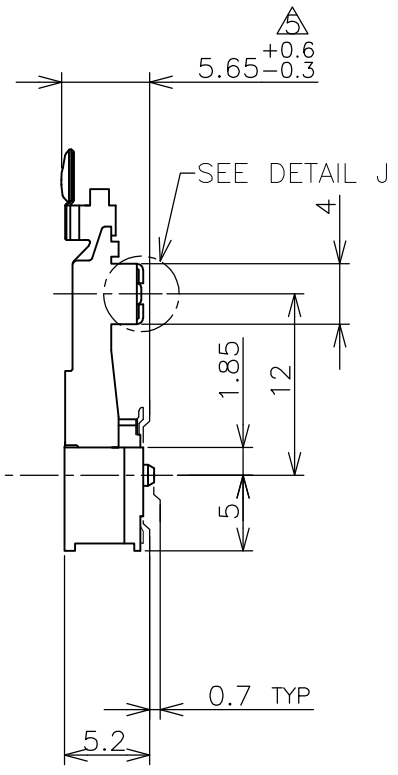
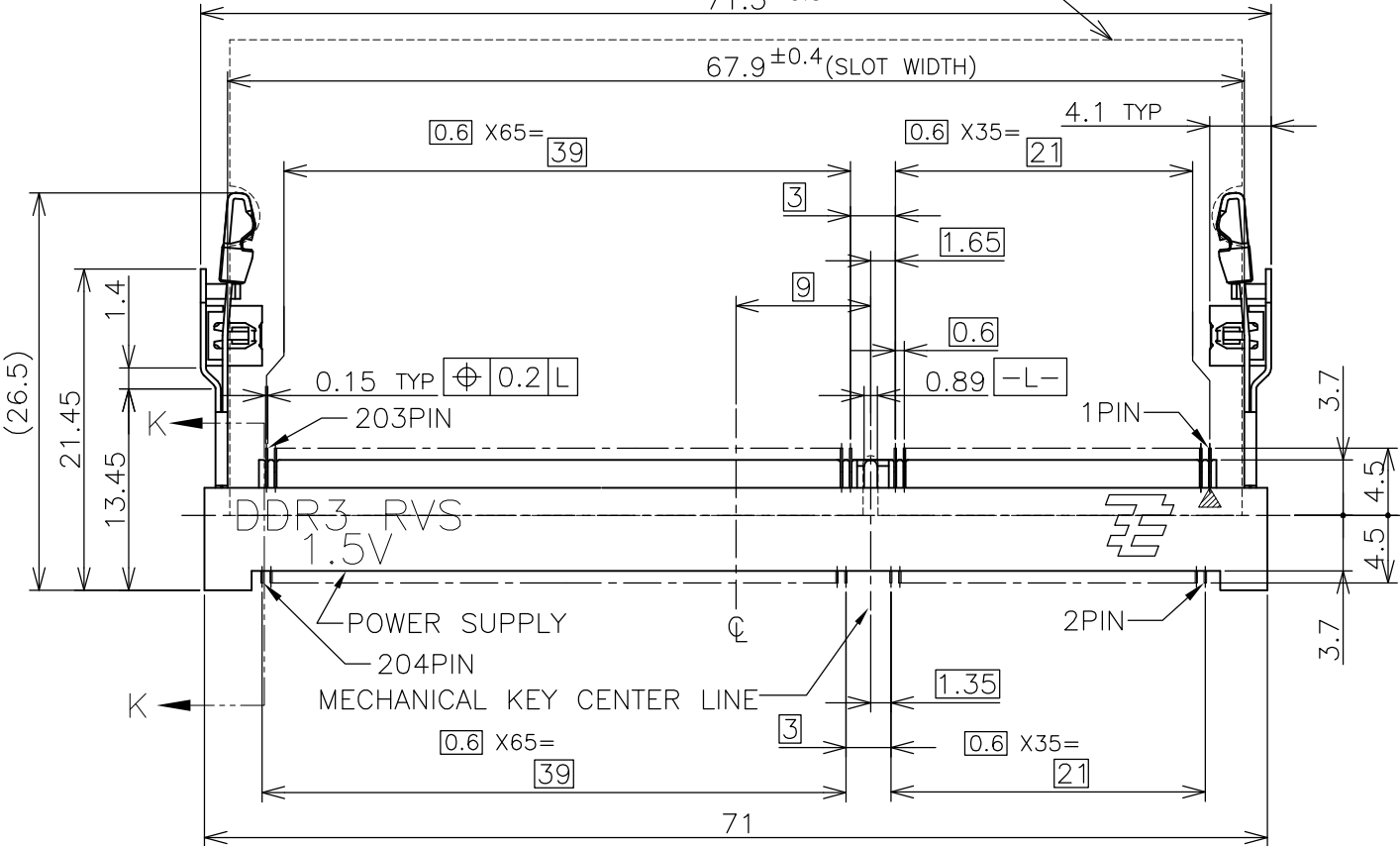


THIS DRAWING IS UNPUBLISHED. RELEASED FOR PUBLICATION SEP ,2007.
 © COPYRIGHT 2007 By - ALL RIGHTS RESERVED.

| LOC | DIST | REVISIONS | | | |
|-----|------|-------------|---------------------------|-----------|---------|
| P | LTR | DESCRIPTION | DATE | DWN | APVD |
| J | / | C1 | REVISED PER ECR-13-007359 | 02MAY2013 | W.W C.W |

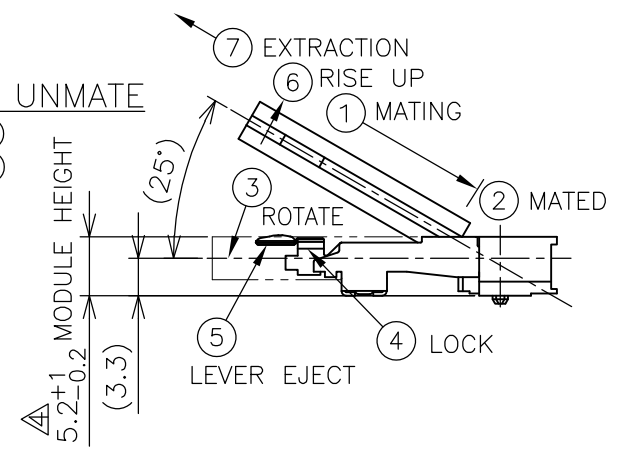


RECOMMENDED MATING P.C.B OUTLINE
71.5±0.5



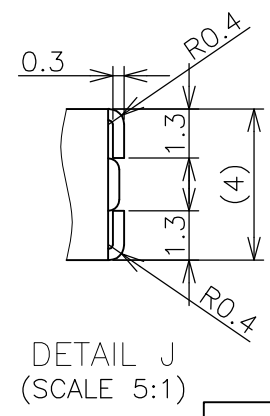
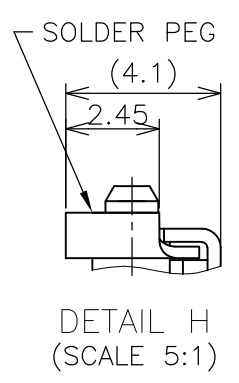
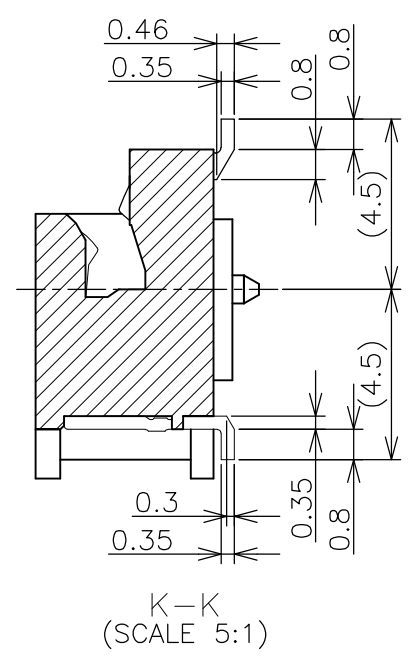
HOW TO MATE AND UNMATE

- MATE: ① → ④
- UNMATE: ⑤ → ⑦



(APPLIED TO SHEET 1-3)

- MATERIAL ; HOUSING: HIGH TEMPERATURE THERMO PLASTIC UL94V-0
 COLOR: SEE TABLE
 CONTACT: COPPER ARROY
 LOCK LEVER: STAINLESS STEEL
 PEG: COPPER ARROY
 1. FINISH ; CONTACT AREA: GOLD FLASH
 ALL OVER NICKEL.
 SOLDERING AREA: GOLD FLASH PLATING
 PEG: TIN PLATING
 2. FINISH ; CONTACT AREA: 0.000254MIN GOLD
 ALL OVER NICKEL.
 SOLDERING AREA: GOLD FLASH PLATING
 PEG: TIN PLATING
 3. FINISH ; CONTACT AREA: 0.00076MIN GOLD
 ALL OVER NICKEL.
 SOLDERING AREA: GOLD FLASH PLATING
 PEG: TIN PLATING
- △ COPLANARITY: 0.1 MAX. (BEFORE SOLDERING)
 △ THE FLOATING VALUE BY SOLDERING IS NOT INCLUDED.
 △ NOT MATING CONDITION.
- IF THE MODULE DOESN'T INSERT AND LOCK IN THE LATCH SMOOTHLY,
 OPEN WIDE BOTH LATCHES BY MANUAL. AND THE MODULE MUST BE
 INSERTED AND LOCKED IN THE LATCH.
 - LOW HALOGEN SPECIFICATION
 CHLORINE(Cl): 900 ppm MAX.
 BROMINE(Br): 900 ppm MAX.
 CHLORINE(Cl) & BROMINE(Br): 1500 ppm MAX.



GENERAL TOLERANCE
 10 ≥ : ±0.2
 30 ≥ > 10 : ±0.25
 100 ≥ > 30 : ±0.3
 ANGLES : ±3°

| | | | | | |
|--|--|--|-----------------|--|--|
| THIS DRAWING IS A CONTROLLED DOCUMENT. | | DWN T.FUMIKURA 18SEP2007 | TE Connectivity | | |
| DIMENSIONS: MM | | CHK K.IKEGAMI 18SEP2007 | | | |
| TOLERANCES UNLESS OTHERWISE SPECIFIED: | | APVD K.IKEGAMI 18SEP2007 | NAME | | |
| 0 PLC ± | | PRODUCT SPEC | | | |
| 1 PLC ± | | 108-78493 | | | |
| 2 PLC ± | | APPLICATION SPEC | | | |
| 3 PLC ± | | SIZE CAGE CODE DRAWING NO RESTRICTED TO | | | |
| 4 PLC ± | | WEIGHT 4.4g A3 00779 C-2013290 | | | |
| ANGLES ± | | CUSTOMER DRAWING SCALE 2:1 SHEET 1 OF 6 REV C1 | | | |
| FINISH | | | | | |

4

3

2

1

THIS DRAWING IS UNPUBLISHED.

RELEASED FOR PUBLICATION SEP , 2007.

© COPYRIGHT 2007 By -

ALL RIGHTS RESERVED.

LOC
J

DIST
/

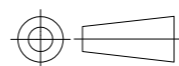
REVISIONS

| P | LTR | DESCRIPTION | DATE | DWN | APVD |
|---|-----|-------------|------|-----|------|
| - | - | SEE SHEET 1 | - | - | - |

| | | | | | | | |
|----------------|------------------------------|-----------|---------------|----------|--------------|-----|-------------|
| AVAILABLE | ENBOSS (SEE SHEET 6) | WITH BOSS | BLACK | NOTE 2-3 | 1.5V | 204 | 2-2013290-3 |
| AVAILABLE | ENBOSS (SEE SHEET 6) | WITH BOSS | BLACK | NOTE 2-2 | 1.5V | 204 | 2-2013290-2 |
| AVAILABLE | ENBOSS (SEE SHEET 6) | WITH BOSS | BLACK | NOTE 2-1 | 1.5V | 204 | 2-2013290-1 |
| AVAILABLE | SEMI-HARD TRAY (SEE SHEET 5) | WITH BOSS | BLACK | NOTE 2-3 | 1.5V | 204 | 2013290-3 |
| AVAILABLE | SEMI-HARD TRAY (SEE SHEET 5) | WITH BOSS | BLACK | NOTE 2-2 | 1.5V | 204 | 2013290-2 |
| AVAILABLE | SEMI-HARD TRAY (SEE SHEET 5) | WITH BOSS | BLACK | NOTE 2-1 | 1.5V | 204 | 2013290-1 |
| TOOLING STATUS | PACAGKING TYPE | BOSS TYPE | HOUSING COLOR | FINISH | POWER SUPPLY | POS | PART NO. |

THIS DRAWING IS A CONTROLLED DOCUMENT.

DIMENSIONS:
MM



TOLERANCES UNLESS OTHERWISE SPECIFIED:

- 0 PLC ±
- 1 PLC ±
- 2 PLC ±
- 3 PLC ±
- 4 PLC ±
- ANGLES ±
- FINISH

MATERIAL

DWN

CHK

APVD

PRODUCT SPEC

APPLICATION SPEC

WEIGHT

CUSTOMER DRAWING



NAME

DDR3 SODIMM SOCKET
0.6mm PITCH 204POS
5.2mm HEIGHT REVERSE TYPE

SIZE

CAGE CODE

DRAWING NO

RESTRICTED TO

A3 00779

C-2013290

-

SCALE 2:1

SHEET 2 OF 6

REV C1

THIS DRAWING IS UNPUBLISHED.

RELEASED FOR PUBLICATION

SEP , 2007.

© COPYRIGHT 2007 By -

ALL RIGHTS RESERVED.

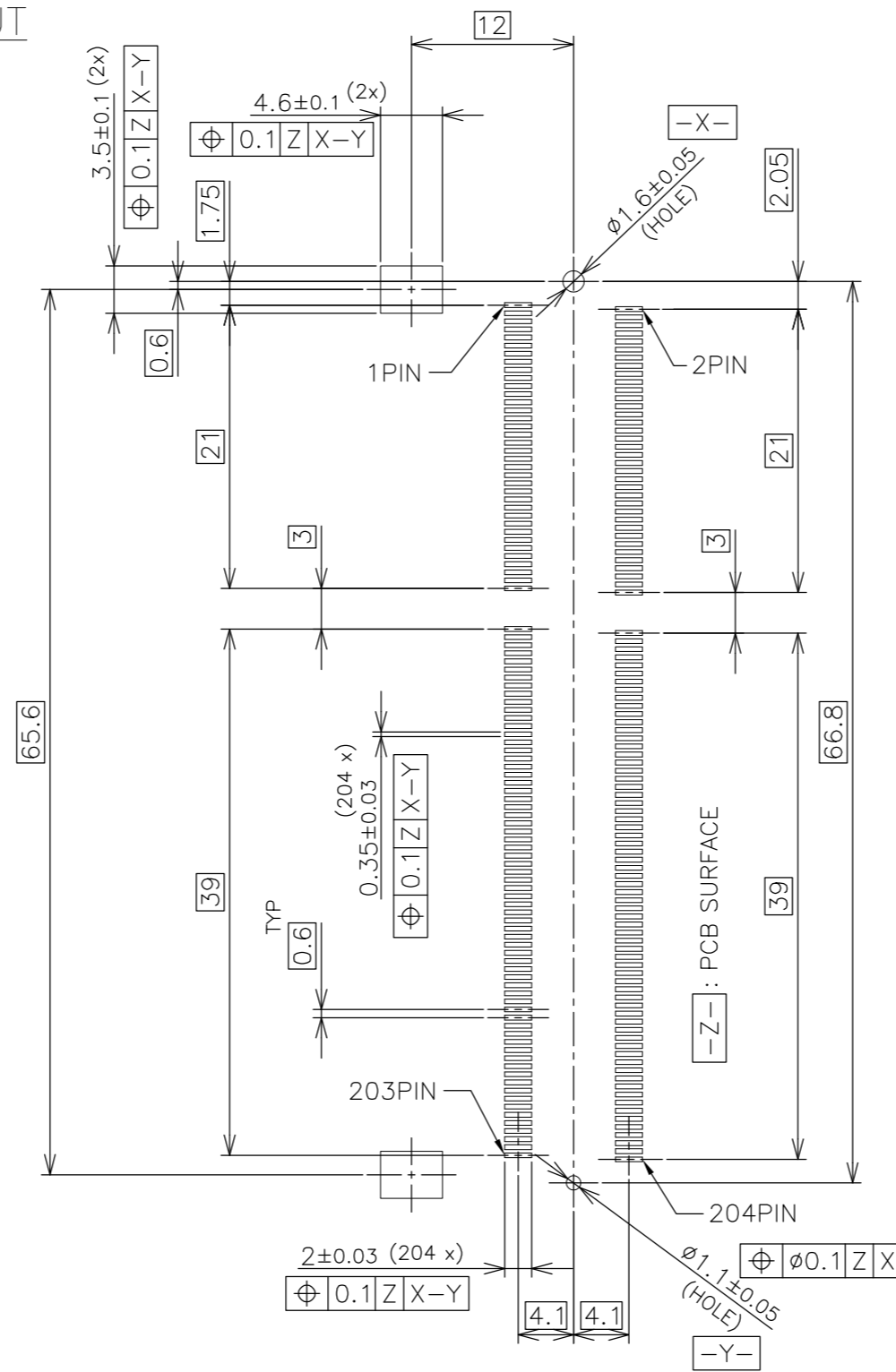
LOC

DIST

REVISIONS

| P | LTR | DESCRIPTION | DATE | DWN | APVD |
|---|-----|-------------|------|-----|------|
| - | - | SEE SHEET 1 | - | - | - |

REFERENCE P.C.BOARD PATTERN LAYOUT (CONNECTOR MOUNTING SIDE)



RVS TYPE

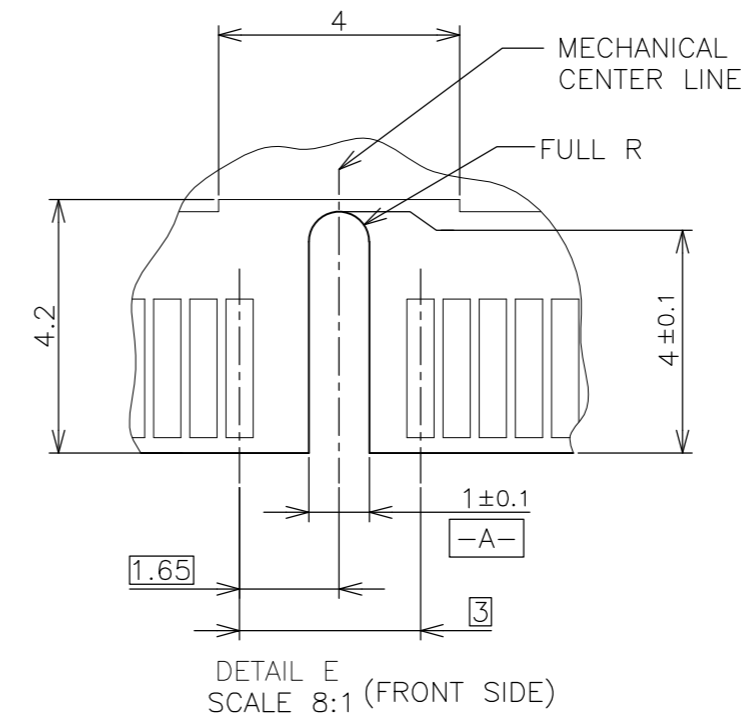
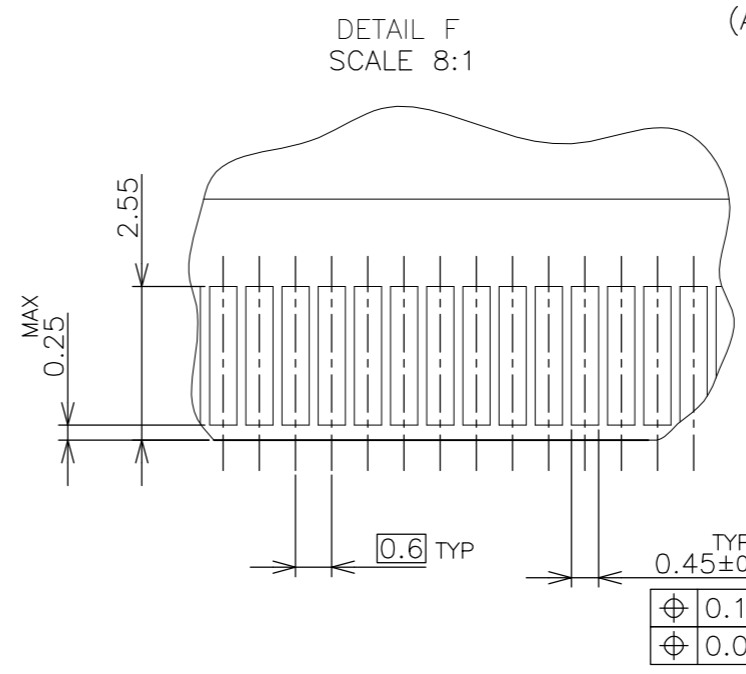
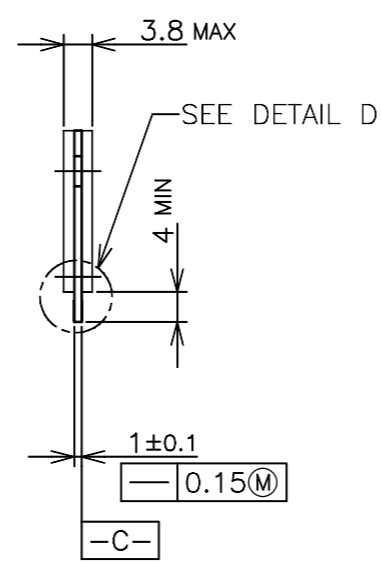
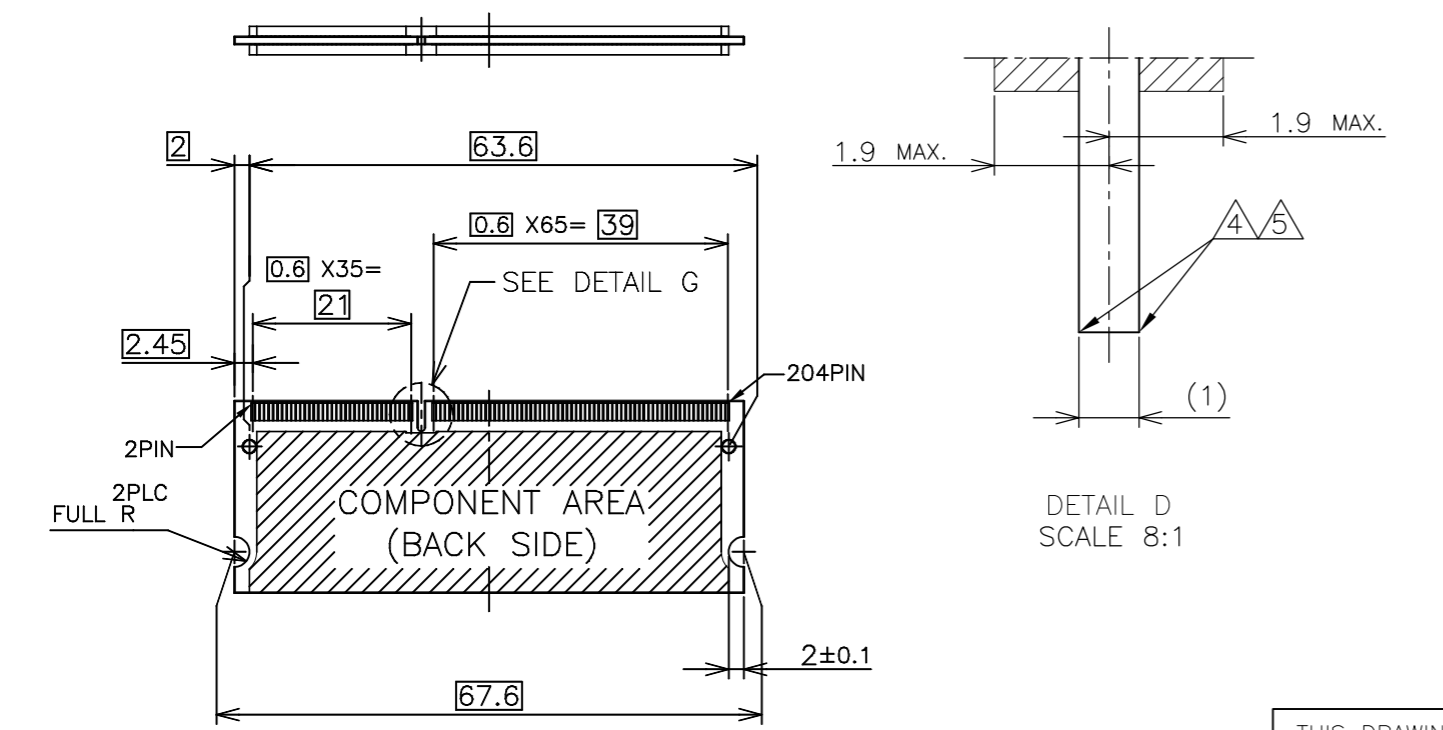
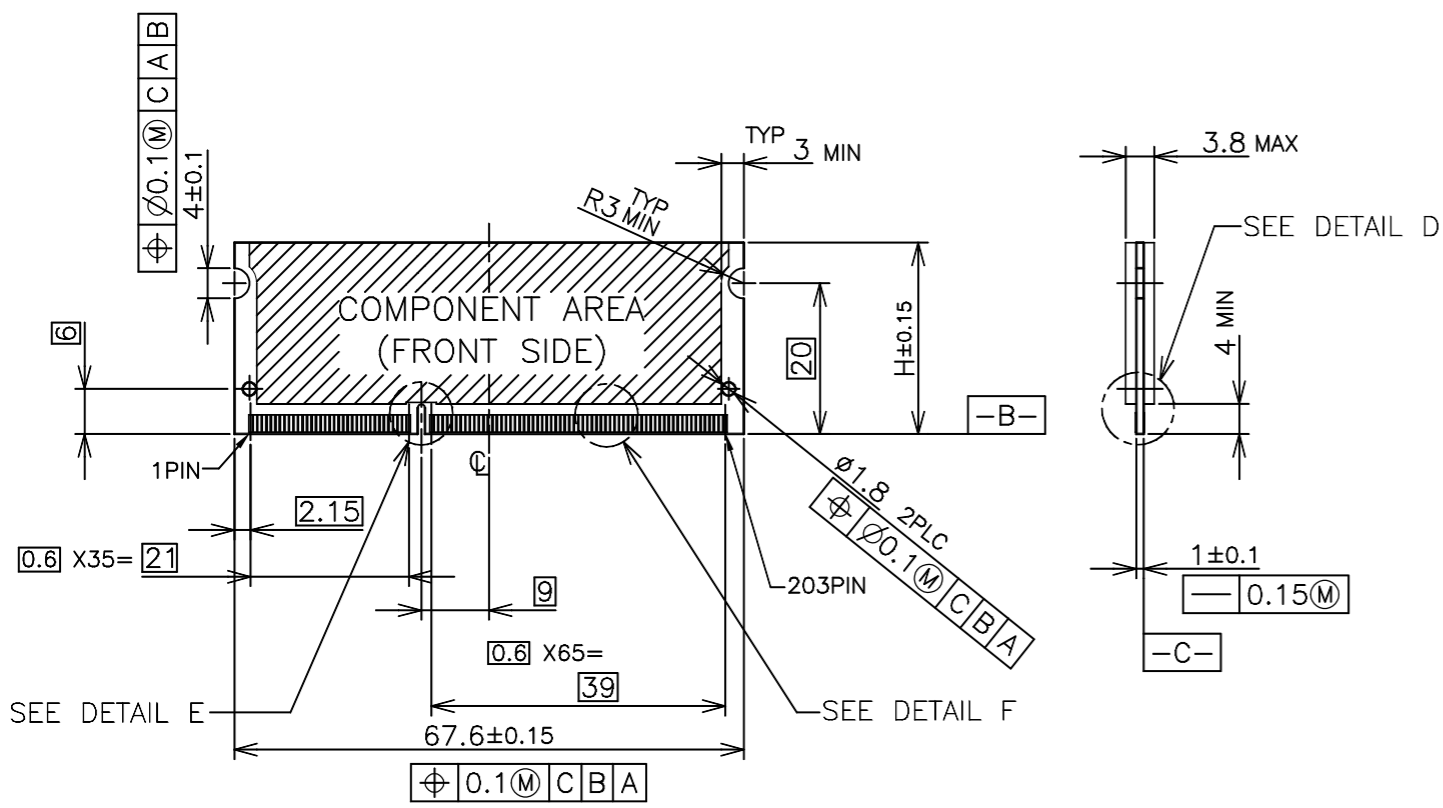
| | |
|--|--|
| THIS DRAWING IS A CONTROLLED DOCUMENT. | |
| DIMENSIONS: MM | TOLERANCES UNLESS OTHERWISE SPECIFIED: |
| | 0 PLC ± |
| | 1 PLC ± |
| | 2 PLC ± |
| | 3 PLC ± |
| | 4 PLC ± |
| | ANGLES ± |
| MATERIAL | FINISH |

| | | | | |
|------------------|---|-----------|------------|---------------|
| DWN | TE Connectivity | | | |
| CHK | | | | |
| APVD | | | | |
| PRODUCT SPEC | | | | |
| APPLICATION SPEC | NAME DDR3 SODIMM SOCKET 0.6mm PITCH 204POS 5.2mm HEIGHT REVERSE TYPE | | | |
| WEIGHT | SIZE | CAGE CODE | DRAWING NO | RESTRICTED TO |
| CUSTOMER DRAWING | A3 | 00779 | C-2013290 | - |
| SCALE | SHEET | | REV | |
| 2:1 | 3 OF 6 | | C1 | |

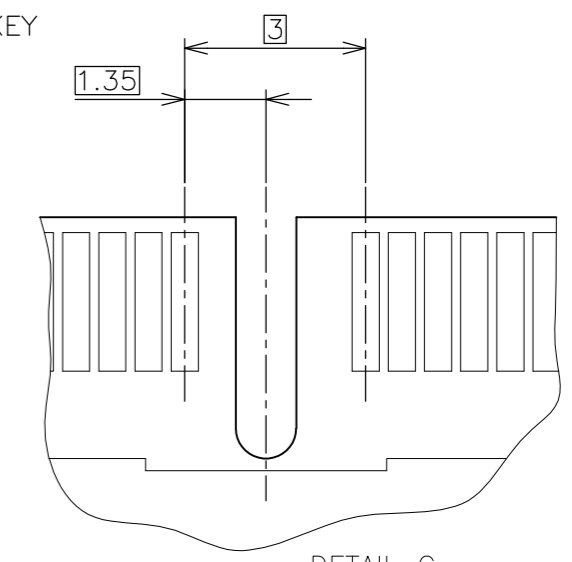
| | |
|-----|------|
| LOC | DIST |
| J | / |

| REVISIONS | | | | | |
|-----------|-----|-------------|------|-----|------|
| P | LTR | DESCRIPTION | DATE | DWN | APVD |
| - | - | SEE SHEET 1 | - | - | - |

REFERENCE MATING P.C.B CONFIGURATION



- (APPLIED TO SHEET 4)
1. TOLERANCES ON ALL DIMENSIONS ±0.15 UNLESS OTHERWISE SPECIFIED.
 2. P.C. BOARD THICKNESS APPLIES ACROSS TABS AND INCLUDES PLATING AND/OR METALIZATION.
 3. FINISH OF PAD : GOLD PLATING 0.00076 MIN. OVER Ni PLATING 0.002MIN.
- NO BURR
CHAMFER 0.25 MAX x 45° IF EXIST.

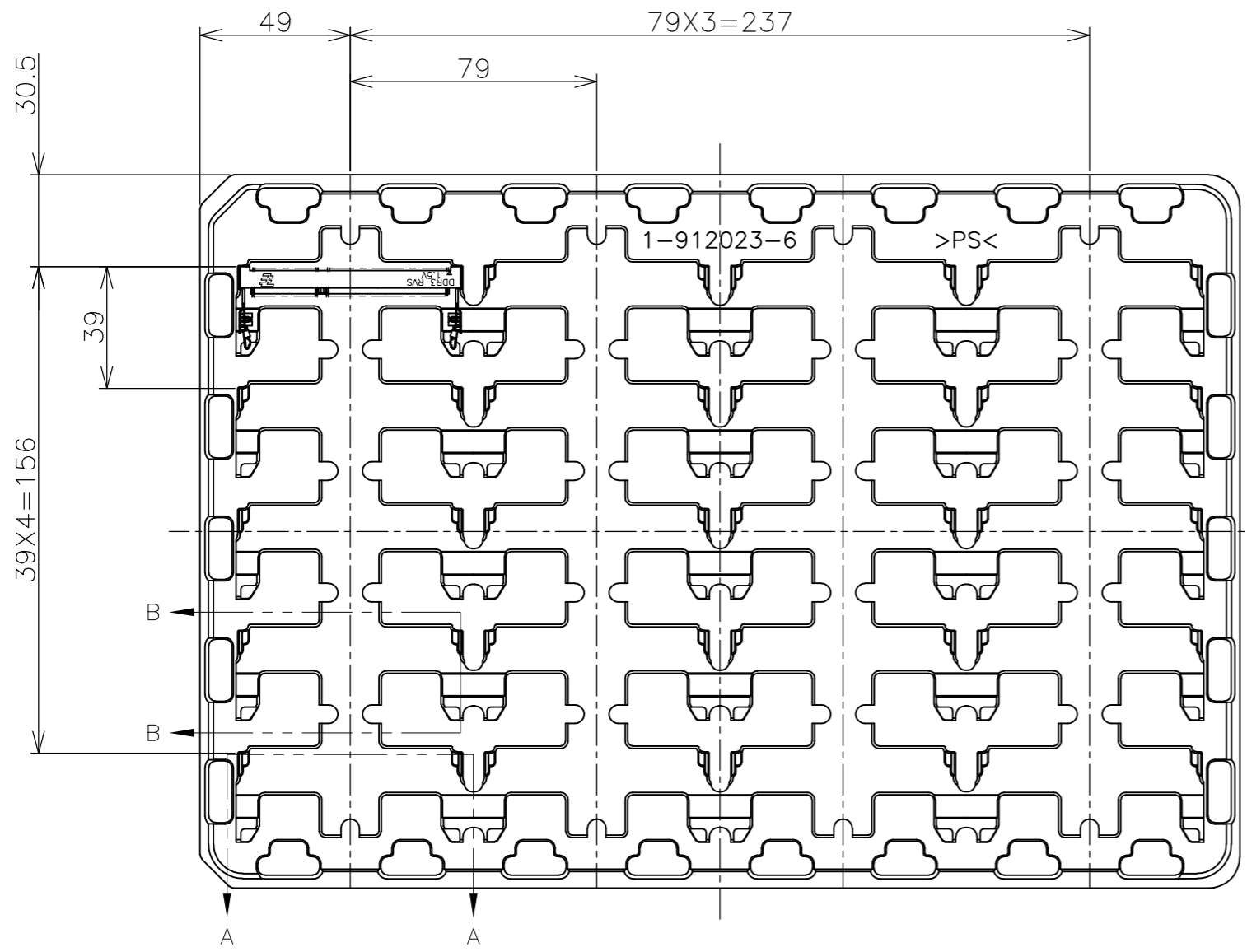


| | |
|-------|------------------|
| 30 | CA |
| 31.75 | BA |
| 25.4 | AA |
| H | SDRAM VARIATIONS |

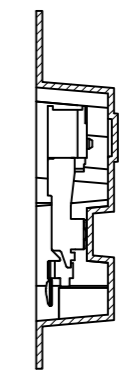
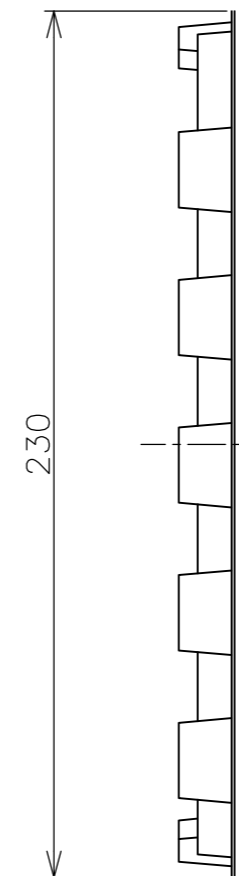
| | | | | | |
|---|--|------------------|--|---|--|
| THIS DRAWING IS A CONTROLLED DOCUMENT. | | DWN | | TE Connectivity | |
| DIMENSIONS: MM | | CHK | | | |
| TOLERANCES UNLESS OTHERWISE SPECIFIED: | | APVD | | | |
| 0 PLC ± 1 PLC ± 2 PLC ± 3 PLC ± 4 PLC ± ANGLES ± FINISH ± | | NAME | | | |
| MATERIAL | | PRODUCT SPEC | | DDR3 SODIMM SOCKET 0.6mm PITCH 204POS 5.2mm HEIGHT REVERSE TYPE | |
| | | APPLICATION SPEC | | SIZE CAGE CODE DRAWING NO RESTRICTED TO A3 00779 C-2013290 - | |
| | | WEIGHT | | SCALE SHEET REV | |
| | | CUSTOMER DRAWING | | 2:1 4 OF 6 C1 | |

THIS DRAWING IS UNPUBLISHED. RELEASED FOR PUBLICATION SEP , 2007.
 © COPYRIGHT 2007 By - ALL RIGHTS RESERVED.

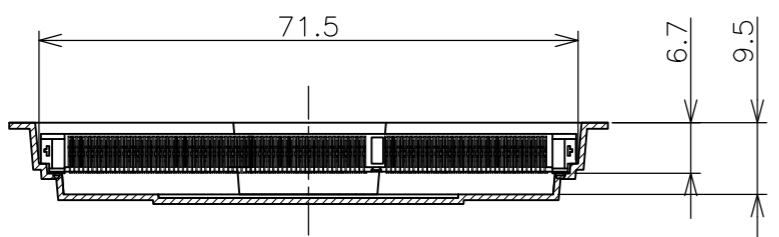
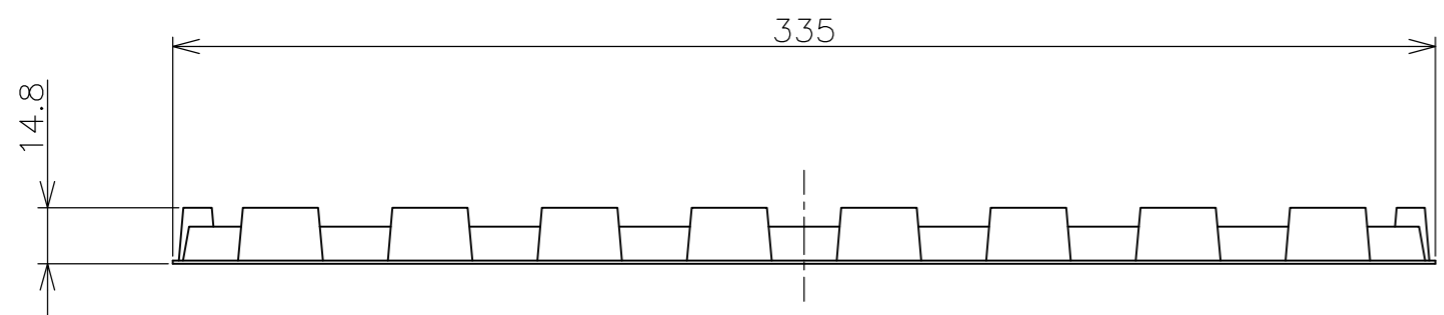
| LOC | | DIST | | REVISIONS | | | |
|-----|-----|-------------|--|-----------|-----|------|--|
| P | LTR | DESCRIPTION | | DATE | DWN | APVD | |
| | - | SEE SHEET 1 | | - | - | - | |



(APPLIED TO SHEET 5)
 1. THE DIRECTION OF EACH CONNECTOR ON A TRAY IS REFERRED TO THIS DRAWING.
 2. GENERAL TOLERANCE: ±0.5, ±3'



B-B
SCALE 1:1



A-A
SCALE 1:1
(180DEG. ROTATE)

| | | |
|---------|----------|-------------|
| 240EA | 20EA | *-2013290-* |
| QTY/BOX | QTY/TRAY | PART NO. |

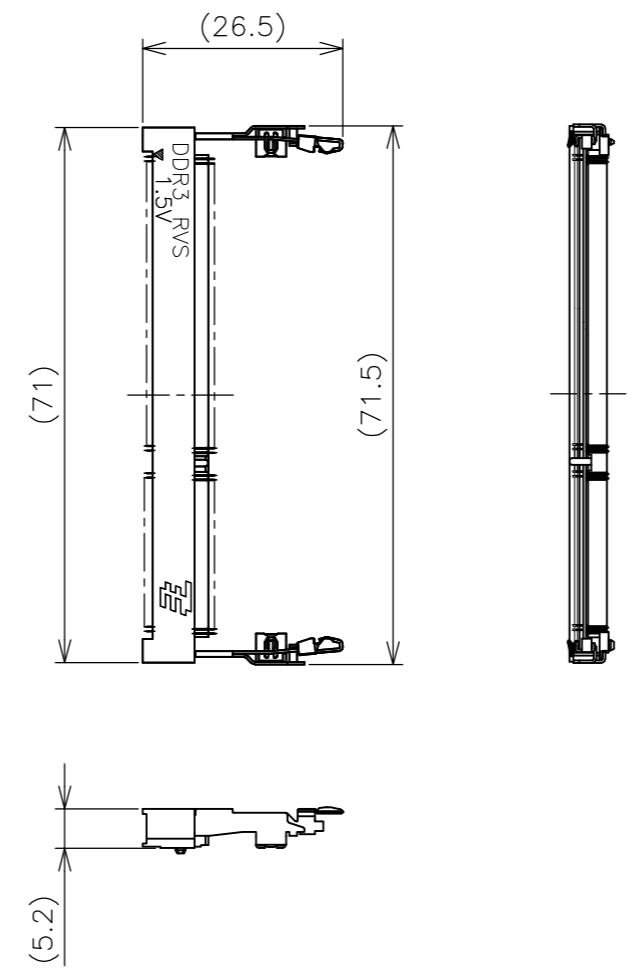
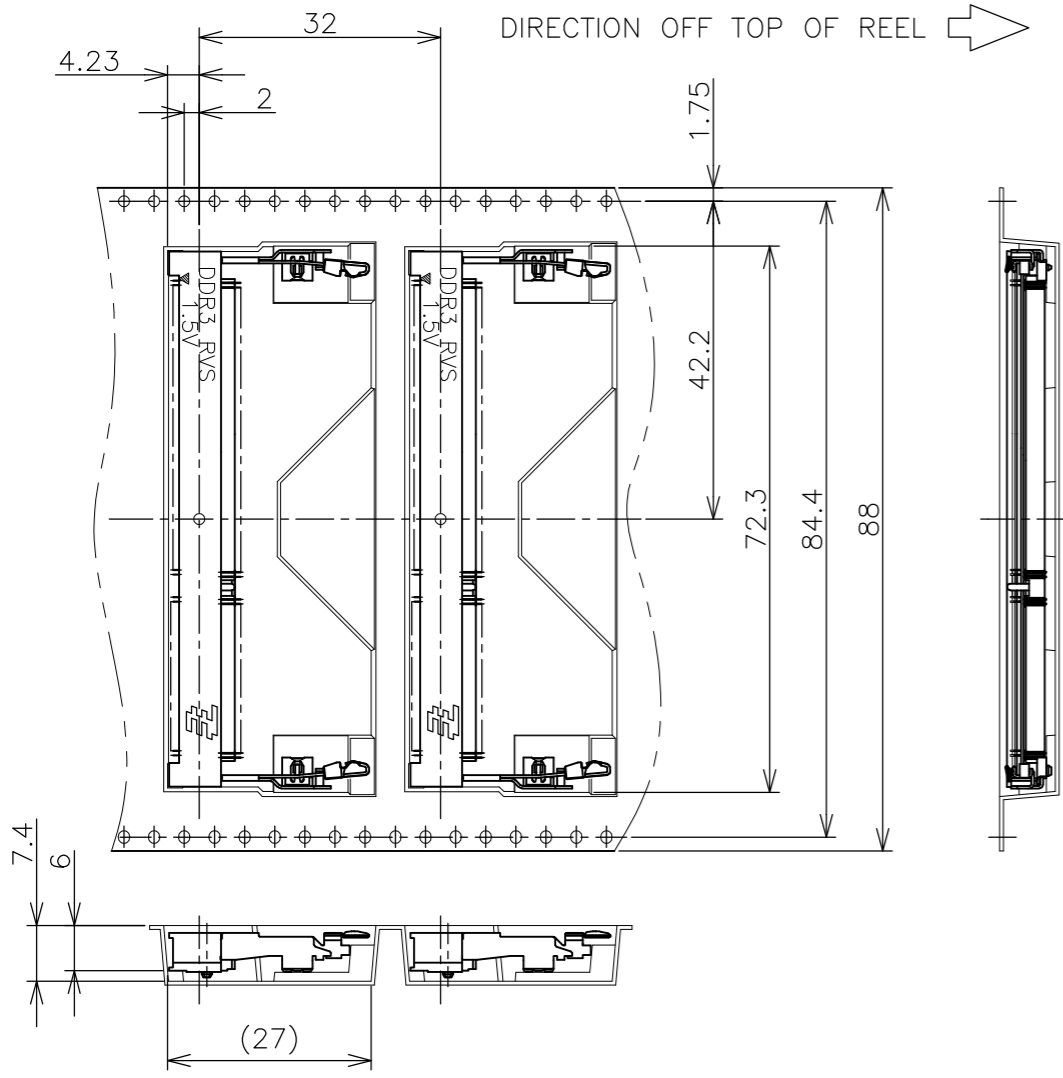
| | | | | | | | | | | | |
|--|-----------|------------------|--|------|-----------|------------|---------------|----|-------|-----------|---|
| THIS DRAWING IS A CONTROLLED DOCUMENT. | | DWN | TE Connectivity | | | | | | | | |
| DIMENSIONS: MM | | CHK | | | | | | | | | |
| | | APVD | | | | | | | | | |
| TOLERANCES UNLESS OTHERWISE SPECIFIED: 0 PLC ± 0.5 1 PLC ± 0.5 2 PLC ± 0.5 3 PLC ± 0.5 4 PLC ± 0.5 ANGLES ± 3' | | NAME | | | | | | | | | |
| MATERIAL | | PRODUCT SPEC | DDR3 SODIMM SOCKET | | | | | | | | |
| | | APPLICATION SPEC | 0.6mm PITCH 204POS | | | | | | | | |
| | | WEIGHT | 5.2mm HEIGHT REVERSE TYPE | | | | | | | | |
| | | CUSTOMER DRAWING | <table border="1"> <tr> <td>SIZE</td> <td>CAGE CODE</td> <td>DRAWING NO</td> <td>RESTRICTED TO</td> </tr> <tr> <td>A3</td> <td>00779</td> <td>C-2013290</td> <td>-</td> </tr> </table> | SIZE | CAGE CODE | DRAWING NO | RESTRICTED TO | A3 | 00779 | C-2013290 | - |
| SIZE | CAGE CODE | DRAWING NO | RESTRICTED TO | | | | | | | | |
| A3 | 00779 | C-2013290 | - | | | | | | | | |

| | | | | |
|------------------|--|-----------|--------------|--------|
| CUSTOMER DRAWING | | SCALE 1:2 | SHEET 5 OF 6 | REV C1 |
|------------------|--|-----------|--------------|--------|

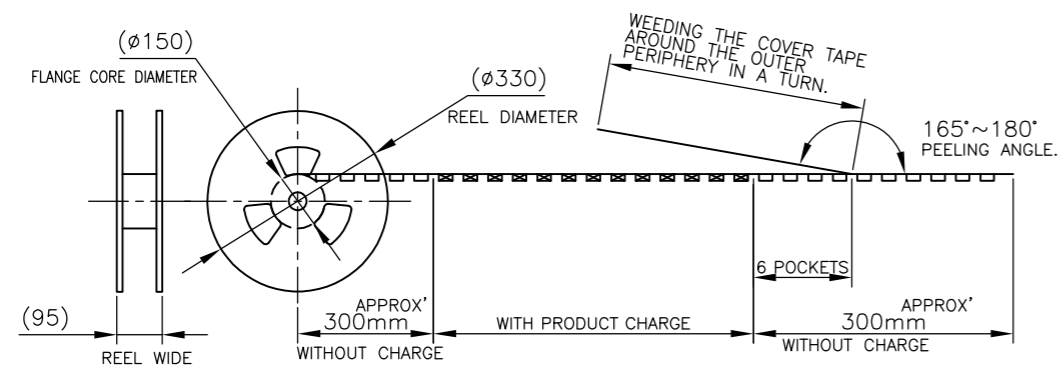
THIS DRAWING IS UNPUBLISHED. RELEASED FOR PUBLICATION SEP, 2007. ALL RIGHTS RESERVED.

© COPYRIGHT 2007 By -

| LOC | | DIST | | REVISIONS | | | | |
|-----|-----|-------------|--|-----------|------|-----|------|--|
| P | LTR | DESCRIPTION | | | DATE | DWN | APVD | |
| | - | SEE SHEET 1 | | | - | - | - | |



- (APPLIED TO SHEET 6)
1. THE DIRECTION OF EACH CONNECTOR ON A REEL IS REFERRED TO THIS DRAWING.
 2. GENERAL TOLERANCE: ± 0.5 , $\pm 3'$



FREE SCALE

| | | | | | | | |
|--|--|------------------|--|-----------------------|--|-----------------|--|
| THIS DRAWING IS A CONTROLLED DOCUMENT. | | DWN | | 200EA | | *- 2013290 -* | |
| DIMENSIONS: MM | | CHK | | QTY/REEL | | PART NO. | |
| TOLERANCES UNLESS OTHERWISE SPECIFIED: | | APVD | | TE Connectivity | | | |
| 0 PLC ± 0.5 | | PRODUCT SPEC | | | | | |
| 1 PLC ± 0.5 | | APPLICATION SPEC | | NAME | | | |
| 2 PLC ± 0.5 | | WEIGHT | | DDR3 SODIMM SOCKET | | | |
| 3 PLC ± 0.5 | | CUSTOMER DRAWING | | 0.6mm PITCH 204POS | | | |
| 4 PLC ± 0.5 | | SCALE 1:2 | | SIZE A3 | | CAGE CODE 00779 | |
| ANGLES $\pm 3'$ | | SHEET 6 OF 6 | | DRAWING NO. C-2013290 | | RESTRICTED TO | |
| FINISH | | REV C1 | | | | | |