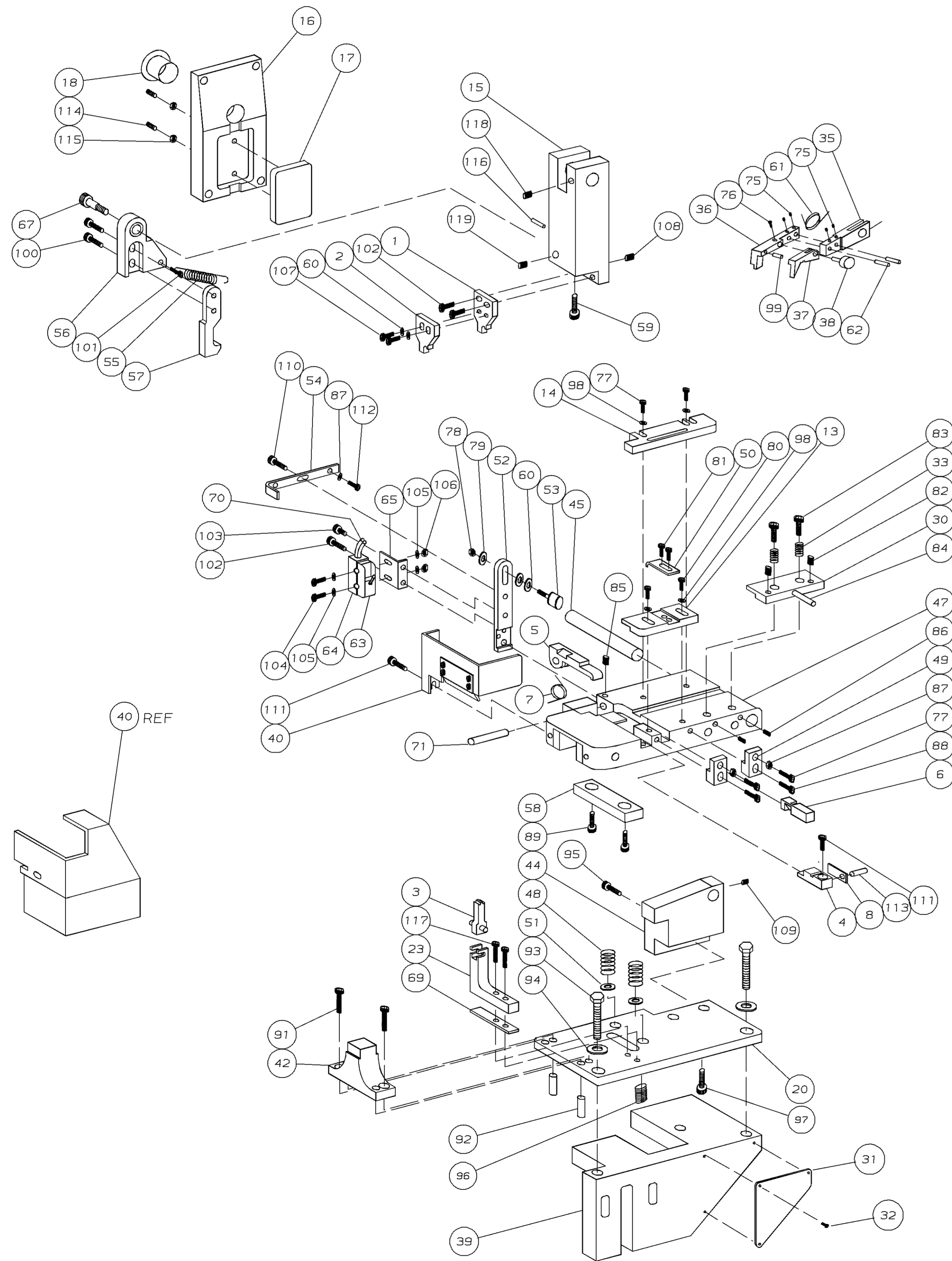


| PART NUMBER | REV | FIRST USED |
|-------------|-----|------------|
| 565505-2 | V | 1-471273-3 |

TERMINAL NAME: **A**
 MARK 111 .250 FLAG FASTON
 42563
 60851

| CRIMPING DATA | | | |
|-------------------|------|-----------------------|--------------------|
| CRIMP HEIGHT | | WIRE SIZE | |
| .089 | | 10 | |
| .075 | | 12 | |
| CRIMP | SIZE | TYPE | RANGE |
| WIRE | .200 | TAB LOK | 12-10 |
| INSUL | .220 | 0 | - |
| FEED | .770 | APPL INST 408-8011 | SET UP GAGE LAYOUT |
| WIRE STRIP LENGTH | | - | |

- 1 RECOMMENDED SPARE PARTS.
- 2 ITEMS NOT SHOWN.
- 3 END WIRE APPLICATION



| QTY | REV | DESCRIPTION | ITEM NO |
|-----|-----|---------------------------------------|---------|
| - | - | - | 73 |
| - | - | - | 72 |
| 1 | - | A 465702-1 DOWEL PIN | 71 |
| 1 | - | C 465918-1 LEAD WIRE | 70 |
| 1 | - | A 811223-1 SPACER, ANVIL HOLDER | 69 |
| - | - | - | 68 |
| 1 | - | A 810413 HOOK HOLDER SCREW | 67 |
| 1 | - | A 22787-2 CONNECTOR | 66 |
| 1 | - | B 811074-1 BRACKET, MICRO SWITCH | 65 |
| 1 | - | A 22689-2 COVER, MICROSWITCH | 64 |
| 1 | - | A 23496-1 MICRO SWITCH | 63 |
| 2 | - | A 1-21030-5 DOWEL PIN | 62 |
| 1 | - | A 810421-1 SPRING, FEED FINGER | 61 |
| 4 | - | A 376482 WASHER | 60 |
| 1 | - | A 810642-1 DEPRESSOR SCREW | 59 |
| 1 | - | A 811009-1 HOLD DOWN, HINGE BAR | 58 |
| 1 | - | B 810416 HOOK, SHEAR PICK-UP | 57 |
| 1 | - | A 810419 SHEAR RETURN HOLDER | 56 |
| 1 | - | A 810408 SPRING, CAM FOLLOWER | 55 |
| 1 | - | A 810418 BRACKET, SPRING | 54 |
| 1 | - | A 24746-1 CAM FOLLOWER | 53 |
| 1 | - | C 810409 HOLDER, CAM FOLLOWER | 52 |
| 2 | - | A 811070-1 SPACER, COMPRESSION SPRING | 51 |
| 1 | - | A 810411 STRIP HOLD DOWN | 50 |
| 2 | - | B 810417 STRIP GUIDE STOP | 49 |
| 2 | - | A 3-23846-5 HINGE BAR SPRING | 48 |
| 1 | - | D 565062-1 HINGE BAR ASSY | 47 |
| - | - | - | 46 |
| 1 | - | A 811007-1 HINGE PIN | 45 |
| 1 | - | B 810974-1 HINGE BLOCK & STABILIZER | 44 |
| - | - | - | 43 |
| 1 | - | A 811006-1 FRONT STABILIZING BAR | 42 |
| - | - | - | 41 |
| 1 | - | D 457698-4 GUARD ASSY | 40 |
| 1 | - | C 570238 BASE CASTING | 39 |
| 1 | - | A 810414-1 STUD, FEED FINGER | 38 |
| 1 | - | B 810420 TIP, FEED FINGER | 37 |
| 1 | - | B 810422 FEED FINGER | 36 |
| 1 | - | A 810131 HOLDER, FEED FINGER | 35 |
| - | - | - | 34 |
| 2 | - | A 810135 SPRING, STOCK DRAG | 33 |
| 3 | - | C 21017-6 SCR, DRIVE 4-40 x .25 | 32 |
| 1 | - | A 452373-1 PLATE, IDENTIFICATION | 31 |
| 1 | - | B 811063-1 STOCK DRAG | 30 |
| - | - | - | 29 |
| - | - | - | 28 |
| - | - | - | 27 |
| - | - | - | 26 |
| - | - | - | 25 |
| - | - | - | 24 |
| 1 | - | A 810548-1 HOLDER, ANVIL | 23 |
| - | - | - | 22 |
| - | - | - | 21 |
| 1 | - | C 465238-1 BASE PLATE | 20 |
| - | - | - | 19 |
| 1 | - | A 23141-1 PROTECTIVE PLUG | 18 |
| 1 | - | A 811010-1 ADJUSTMENT PLATE | 17 |
| 1 | - | D 465004-2 RETAINING PLATE, RAM | 16 |
| 1 | - | B 473828 RAM | 15 |
| 1 | - | B 388621-1 STRIP GUIDE, REAR | 14 |
| 1 | - | C 811052-1 STRIP GUIDE, FRONT | 13 |
| - | - | - | 12 |
| - | - | - | 11 |
| - | - | - | 10 |
| - | - | - | 9 |
| 1 | - | B 388632-2 PLATE, FRONT SHEAR | 8 |
| 1 | - | A 810410-1 SPRING, SHEAR BLADE | 7 |
| 1 | - | A 811067-1 PLATE, REAR SHEAR | 6 |
| 1 | - | C 810412 BLADE, SHEAR | 5 |
| 1 | - | A 811047-1 INSERT, ANVIL | 4 |
| 1 | - | A 810550-1 ANVIL | 3 |
| 1 | - | C 472123 CRIMPER, INSULATION | 2 |
| 1 | - | B 465606-1 CRIMPER, WIRE | 1 |

| QTY | REV | DESCRIPTION | ITEM NO |
|-----|-----|--|---------|
| - | - | - | 129 |
| - | - | - | 128 |
| - | - | - | 127 |
| - | - | - | 126 |
| - | - | - | 125 |
| - | - | - | 124 |
| - | - | - | 123 |
| - | - | - | 122 |
| - | - | - | 121 |
| - | - | - | 120 |
| 1 | - | A 5-21008-2 SCR, SOC SET, 10-32 X .38 | 119 |
| 1 | - | A 21013-4 SCR, SOC SET, 5/L, 1/4-20 X .38 | 118 |
| 2 | - | A 3-21000-6 SCR, SHC, 10-32 X .62 | 117 |
| 1 | - | A 5-21028-5 PIN, SLT SPG ϕ .125 X .75 | 116 |
| 2 | - | A 21020-7 NUT, HEX, 1/4-28 | 115 |
| 2 | - | A 7-21007-7 SCR, SOC SET, 1/4-28 X 1.00 | 114 |
| 1 | - | A 9-21028-0 PIN, ROLL, ϕ .125 X .25 | 113 |
| 1 | - | A 3-21000-0 SCR, SHC, 8-32 X .88 | 112 |
| 2 | - | A 3-21000-5 SCR, SHC, 10-32 X .50 | 111 |
| 1 | - | A 2-21000-5 SCR, SHC, 8-32 X .25 | 110 |
| 1 | - | A 4-21008-0 SCR, SOC SET, 8-32 X .25 | 109 |
| 1 | - | A 21007-4 SCR, SOC SET, 1/4-20 X .38 | 108 |
| 2 | - | A 3-21000-1 SCR, SHC, 10-32 X .38 | 107 |
| 2 | - | A 21068-5 NUT, HEX, 6-32 | 106 |
| 4 | - | A 21108-5 WASHER, FLAT, #6 | 105 |
| 2 | - | A 7-21000-3 SCR, SHC, 6-32 X 1.25 | 104 |
| 1 | - | A 9-21001-0 SCR, SHC, 1/4-20 X .25 | 103 |
| 3 | - | A 21001-2 SCR, SHC, 1/4-20 X .50 | 102 |
| 1 | - | A 2-21002-1 SCR, SBHC, 8-32 X .38 | 101 |
| 2 | - | A 7-21000-6 SCR, SHC, 10-32 X .31 | 100 |
| 1 | - | A 21028-6 PIN, ROLL, ϕ .062 X .50 | 99 |
| 2 | - | - 21108-6 WASHER, FLAT, #8 | 98 |
| 3 | - | A 1-21001-7 SCR, SHC, 5/16-18 X .62 | 97 |
| 2 | - | A 4-21007-7 SCR, SOC SET, 1/4-13 X 1.00 | 96 |
| 2 | - | A 21001-5 SCR, SHC, 1/4-20 X .88 | 95 |
| 2 | - | A 371178 WASHER, FLAT, 3/8 | 94 |
| 2 | - | A 3-21015-2 SCR, HEX HD, 3/16-16 X 1.25 | 93 |
| 2 | - | A 4-21029-7 PIN, ROLL, ϕ .250 X 1.00 | 92 |
| 2 | - | A 1-21001-8 SCR, SHC, 5/16-18 X .75 | 91 |
| - | - | - | 90 |
| 2 | - | A 2-21015-9 SCR, HEX HD, 3/8-16 X .75 | 89 |
| 2 | - | A 2-21000-6 SCR, SHC, 8-32 X .38 | 88 |
| 3 | - | A 21068-6 NUT, HEX, #8 | 87 |
| 2 | - | A 5-21006-0 SCR, SOC SET, 10-32 X .25 | 86 |
| 2 | - | A 4-21008-0 SCR, SOC SET, 5/L, 8-32 X .25 | 85 |
| 1 | - | A 1-21029-7 PIN, ROLL, ϕ .187 X 2.00 | 84 |
| 2 | - | A 21001-4 SCR, SHC, 1/4-20 X .75 | 83 |
| 2 | - | A 4-21008-2 SCR, SOC SET, 5/L, 8-32 X .38 | 82 |
| 2 | - | A 1-21000-8 SCR, SHC, 6-32 X .25 | 81 |
| 2 | - | A 2-21003-3 SCR, FSHC, 8-32 X .38 | 80 |
| 1 | - | A 21108-7 WASHER, FLAT, #10 | 79 |
| 1 | - | A 21068-7 NUT, HEX, #10 | 78 |
| 4 | - | A 2-210007 SCR, SHC, 8-32 X .50 | 77 |
| 1 | - | A 3-21006-9 SCR, SOC SET, 8-32 X .19 | 76 |
| 4 | - | A 4-21006-0 SCR, SOC SET, 8-32 X .25 | 75 |
| - | - | - | 74 |

| QTY | REV | DESCRIPTION | ITEM NO |
|--|--------------|------------------------------|---|
| -2 | U/M | DWG SIZE | REVISION OF EACH ASSY NO (WHEN BLANK, USE DWG REVISION) |
| PARTS LIST | | | |
| QTY REQD PER ASSY | | | |
| DIMENSIONS IN INCHES. DO NOT SCALE PRINT. TOLERANCES UNLESS OTHERWISE SPECIFIED. | | | |
| DR | 5/17/93 | APP | 11-24-93 |
| W. | SOURBEER/UTA | B | WOLFE |
| CHK | 11-24-93 | REL | 1/10/94 |
| | C | ERISMAN | B. MORGAN |
| NAME | | HINGEBAR STANDARD APPLICATOR | |
| SCALE | | DWG NO | |
| 1:4 | | 565505-2 | |
| MACHINE REF | | STD APPL | |
| 1 of 1 | | REV | |
| V | | V | |

THIS DRAWING IS A CONTROLLED DOCUMENT FOR AMP. INCORPORATED. IT IS SUBJECT TO CHANGE AND THE CONTROLLING ENGINEERING ORGANIZATION SHOULD BE CONTACTED FOR THE LATEST REVISION.

THIS INFORMATION IS CONFIDENTIAL AND IS DISCLOSED TO YOU ON CONDITION THAT NO FURTHER DISCLOSURE IS MADE BY YOU TO OTHER THAN AMP PERSONNEL WITHOUT WRITTEN AUTHORIZATION FROM AMP INCORPORATED, HARRISBURG, PA.