

推奨基板寸法
RECOMMENDED PCB PATTERN LAYOUT
(SCALE:2-1)

注) NOTES

1.材質 MATERIAL
ハウジング: ガラス入りPPS、茶色、UL94V-0
HOUSING: G.F.PPS, BROWN, UL94V-0
ターミナル: 銅合金 (t=0.2)
TERMINAL: COPPER ALLOY
フィッティングネイル: 銅合金 (t=0.2)
FITTING NAIL: COPPER ALLOY
吸着カバー: ステンレス (t=0.2)
VACUUM COVER: STAINLESS STEEL

2.メッキ仕様 PLATING

ターミナル TERMINAL
接点部: 金メッキ 0.25μmMIN.
CONTACT AREA: GOLD 0.25μmMIN.
半田付け部: 錫メッキ 1.0μmMIN.
SOLDER TAIL AREA: TIN 1.0μmMIN.
下地メッキ: ニッケルメッキ 1.5μmMIN.
UNDER-PLATING: NICKEL 1.5μmMIN.

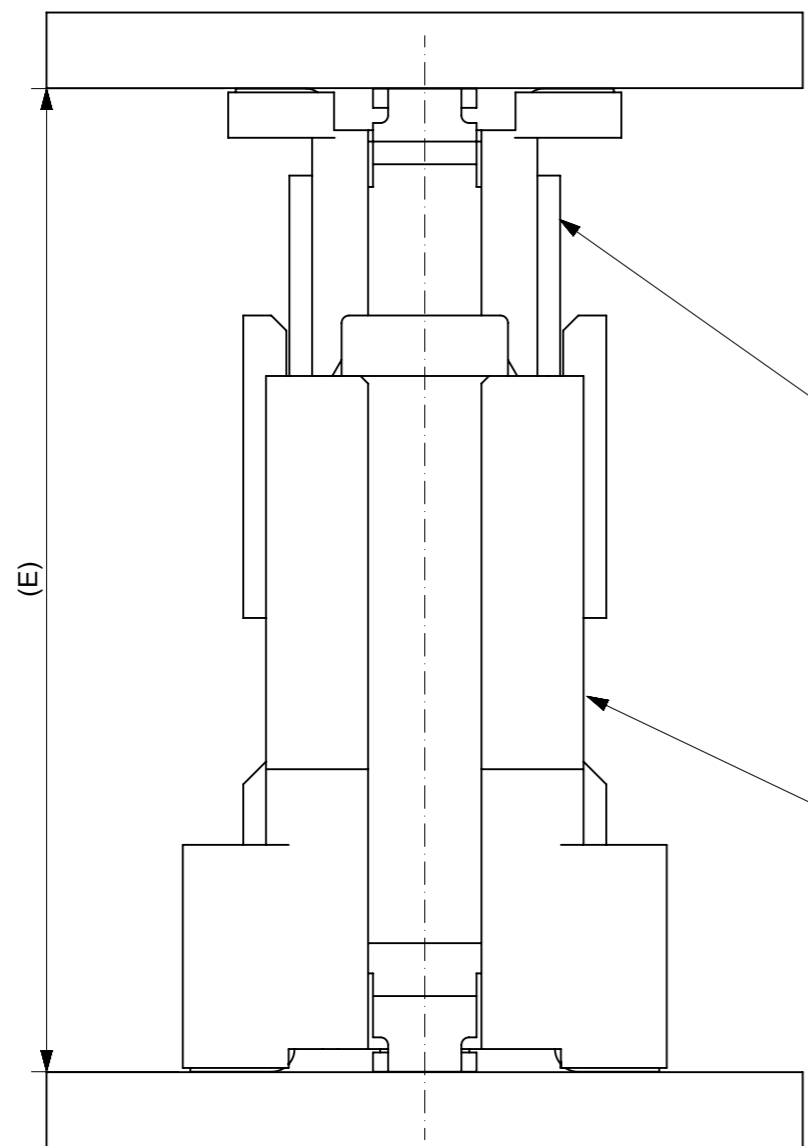
フィッティングネイル FITTING NAIL
錫メッキ 1.0μmMIN.
TIN 1.0μmMIN.
下地メッキ: ニッケルメッキ 1.0μmMIN.
UNDER-PLATING: NICKEL 1.0μmMIN.

3.テールのバラツキ寸法 TAIL COPLANARITY
テール平坦度は、0.1MAX.とする。
TAIL COPLANARITY TO BE 0.1MAX.

4.本製品は 53649-***2の鉛フリー品である。
THIS PRODUCT IS LEAD FREE OF 53649-***2

無し WITHOUT	47.42	46.32	43.815	51.32	53649-1474	140
	34.72	33.62	31.115	38.62	53649-1074	100
	28.37	27.27	24.765	32.27	53649-0874	80
有り WITH	22.02	20.92	18.415	25.92	53649-0674	60
	15.67	14.57	12.065	19.57	53649-0474	40
	12.5	11.4	8.89	16.4	53649-0374	30
ハウジングロック HSG LOCK	D	C	B	A	エンボス梱包 EMBOSSED PACKAGE オーダー番号 ORDER NO.	極数 CKT

GENERAL TOLERANCES (UNLESS SPECIFIED)		THIS DRAWING CONTAINS INFORMATION THAT IS PROPRIETARY TO MOLEX ELECTRONIC TECHNOLOGIES, LLC AND SHOULD NOT BE USED WITHOUT WRITTEN PERMISSION	
10 UNDER	± 0.2	DIMENSION UNITS	SCALE
10 OVER 30 UNDER	± 0.25	mm	1:1
30 OVER	± 0.3	CURRENT REV DESC:	
ANGULAR ± 3 °		GENERAL TOLERANCES (UNLESS SPECIFIED)	
DRAFT WHERE APPLICABLE MUST REMAIN WITHIN DIMENSIONS		ANGULAR TOL ± 30 °	
		4 PLACES ± 0.2	
		3 PLACES ± 0.25	
		2 PLACES ± 0.3	
		1 PLACE ±	
		0 PLACES ±	
		DRAFT WHERE APPLICABLE MUST REMAIN WITHIN DIMENSIONS	
		THIRD ANGLE PROJECTION	
		DRAWING	
		SERIES	
		MATERIAL NUMBER	
		CUSTOMER	
		SHEET NUMBER	
		EC NO: 647727	
		DRWN: AHMADI2 2020/10/26	
		CHK'D: HSHIMOYAMA 2020/10/26	
		APPR: SHOSHIKAWA 2020/10/26	
		INITIAL REVISION:	
		DRWN: MNABEI 2004/03/04	
		APPR: MSASAO 2004/03/08	
		DOCUMENT NUMBER	
		DOC TYPE	
		DOC PART	
		REVISION	
		SD-53649-004	
		PSD 001 J	
		A3-SIZE	
		53649	
		GENERAL MARKET	
		1 OF 2	



55091 series
53625 series
53647 series
53649 series
53627 series
Plug

52885 series
52901 series
Receptacle

嵌合高さ一覧 Stacking Height variation			
	6	52885 series	55091 series
	7		53625 series
	8		53647 series
○	9		53649 series
	10		53627 series
	12	52901 series	55091 series
	13		53625 series
	14		53647 series
○	15		53649 series
	16		53627 series
本図製品該当高さ Height Application	嵌合高さ E Stacking Height	リセプタクル Receptacle	プラグ Plug

GENERAL TOLERANCES (UNLESS SPECIFIED)		THIS DRAWING CONTAINS INFORMATION THAT IS PROPRIETARY TO MOLEX ELECTRONIC TECHNOLOGIES, LLC AND SHOULD NOT BE USED WITHOUT WRITTEN PERMISSION		
DIMENSION UNITS	SCALE	CURRENT REV DESC:		
mm	1:1	molex 0.635 B/B CONN. PLUG HS'G COVER ASS'Y -LEAD FREE- PRODUCT CUSTOMER DRAWING		
10 UNDER	± 0.2			EC NO: 647727
10 OVER 30 UNDER	± 0.25			DRWN: AHMADI2 2020/10/26
30 OVER	± 0.3			CHK'D: HSHIMUYAMA 2020/10/26
ANGULAR ± 3 °				APPR: SHOSHIKAWA 2020/10/26
DRAFT WHERE APPLICABLE MUST REMAIN WITHIN DIMENSIONS		INITIAL REVISION:		
		DRWN: MNABEI 2004/03/04	DOCUMENT NUMBER	
		APPR: MSASAO 2004/03/08	SD-53649-004	
		THIRD ANGLE PROJECTION	DOC TYPE	
		DRAWING	PSD	
		SERIES	DOC PART	
		A3-SIZE	001	
		MATERIAL NUMBER	REVISION	
		53649	J	
		CUSTOMER	SHEET NUMBER	
		GENERAL MARKET	2 OF 2	