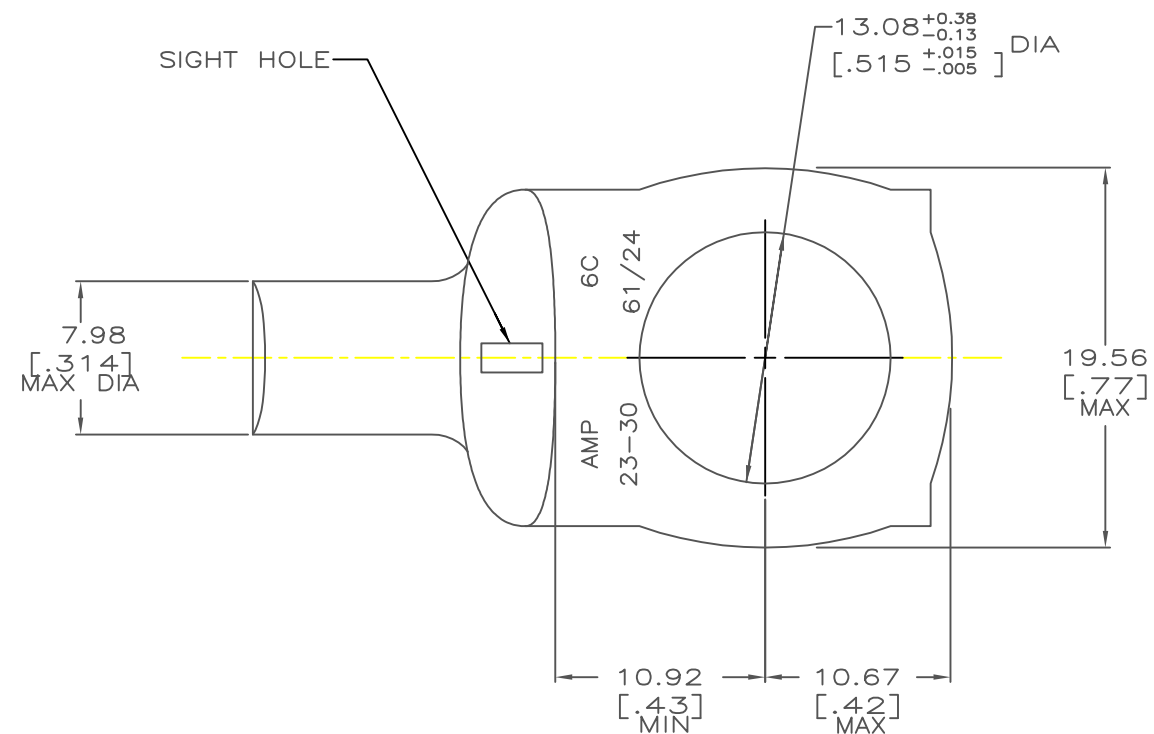


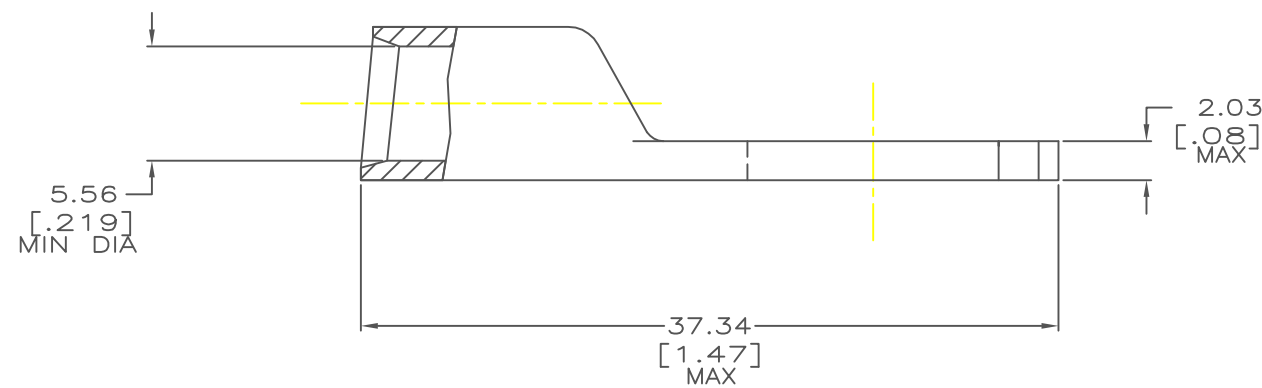
DRAWING MADE IN THIRD ANGLE PROJECTION

THIS DRAWING IS UNPUBLISHED. RELEASED FOR PUBLICATION .19
 © COPYRIGHT 19 BY AMP INCORPORATED. ALL INTERNATIONAL RIGHTS RESERVED.

LOC		DIST		REVISIONS			
ZONE	LTR	DESCRIPTION	DATE	APPD			
G	86	P	F	C	Removal of color coding on the barrel of the lug	06/06/2017	MN



1 CIRCULAR MIL AREA RANGE: 20,800-33,100 CM
 2 TIN PL 0.00381[.000150] MIN THK PER MIL-T-10727



328158

328158
PART NO

DO NOT SCALE PRINT. UNLESS SPECIFIED DIMENSIONS IN mm [INCHES] TOLERANCES ON : 2 PLC DEC ± 0.51[.020] 3 PLC DEC ± - ANGLES ± -		DR 02/28/90 DK SCHRUM		AMP INCORPORATED Harrisburg, Pa. 17105	
MATERIAL ANNEALED COPPER ASTM B-152		CHK 19JAN95 MS FEHER		NAME TERMINAL, AMPOWER™, WIRE SIZE: 6 AWG	
FINISH 2		APPD 19JAN95 WJ VOCKROTH		DRAWING NO 328158	
		APPD 19JAN95 TL SHUTTER		CAGE CODE 00779	
		PRODUCT SPEC 108-30200		SCALE 4:1	
		APPLICATION SPEC -		SHEET 10F 1	
		WEIGHT .014 LB			

METRIC