



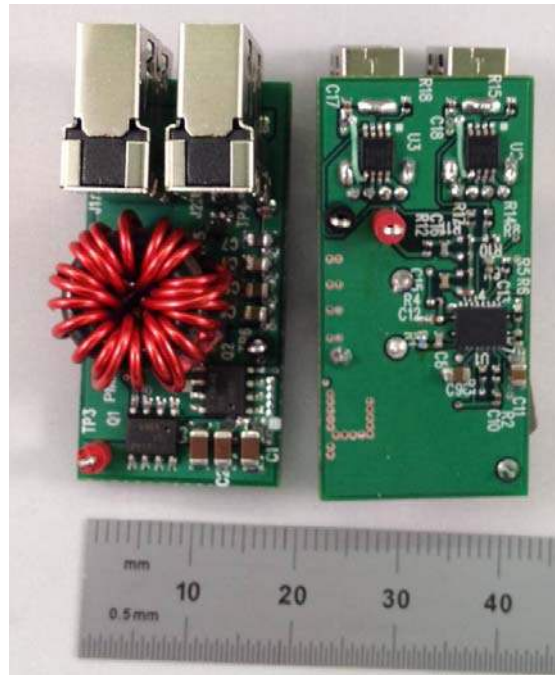
**TPS40170 + TPS2511 – 5V@2.1A (x2)**  
**Universal USB Car Charger**  
**PMP7390\_REVA**  
**5/8/12**

The tests performed were as follows:

- A. TPS40170 – 5V@2.1A (x2)
  - 1. Board Photo
  - 2. Thermal Image
  - 3. Turn-On (No Load)
  - 4. Output Voltage Ripple
  - 5. Transient Response
  - 6. Switching Behavior
  - 7. Efficiency
  - 8. Load Regulation
  - 9. Loop Response

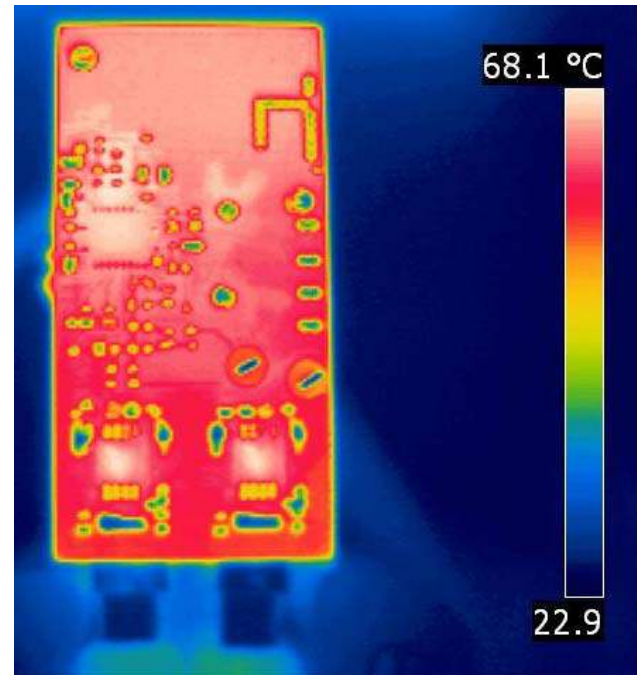
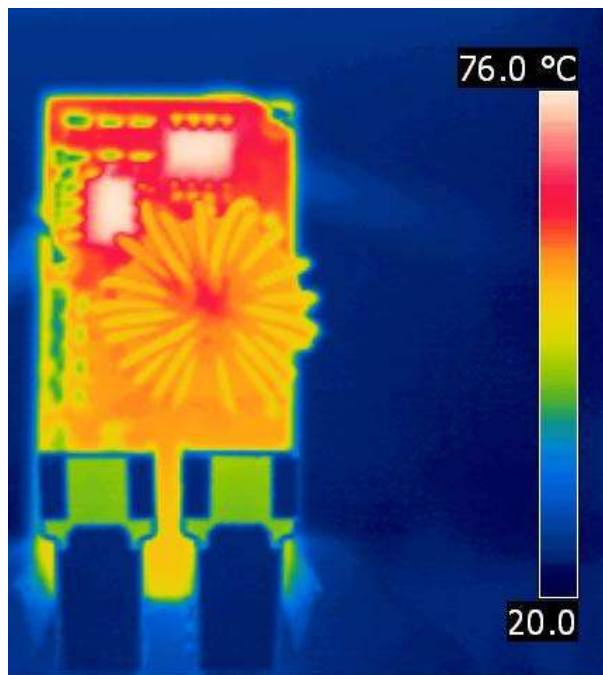
## 1 Board Photo

The photo below shows the front and back of the PMP7390 board.



## 2 Thermal Image

The thermal images of the board are taken with 2A load. The input voltage is 12V.

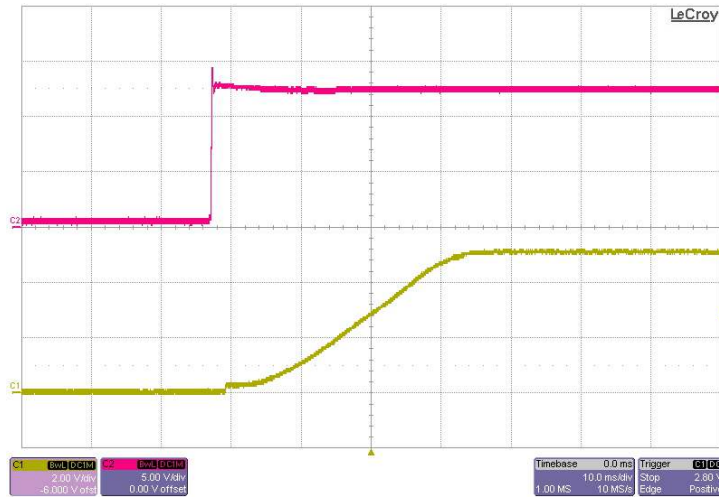


### 3 Turn-On – (TPS40170 : 5V@0A)

The photo below shows the startup waveforms. The output is not loaded. The timebase is set to 10ms/Division. The input voltage is 12V.

Channel 1 – Yellow : 5V Output After the USB Switch – (2V/Division)

Channel 2 – Pink : Input Voltage – (5V/Division)

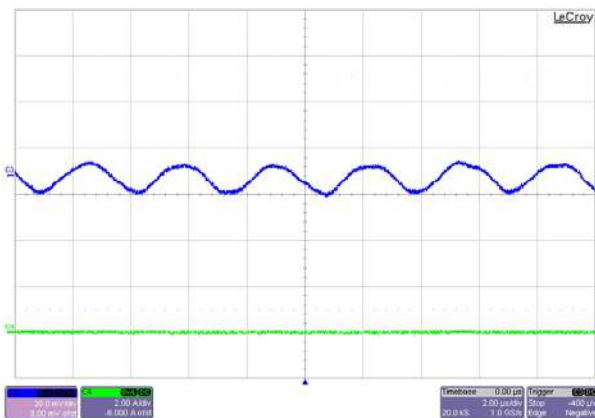


### 4 Output Voltage Ripple – (TPS40170 : 5V@2.1A (x2))

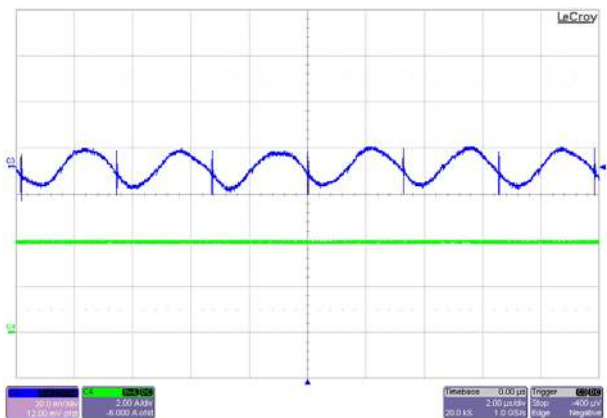
The photo below shows the output voltage ripple. The input voltage is 12V. The timebase is set to 2us/division.

Channel 3 – Blue : Output Voltage Ripple – (20mV/Division; AC Coupled)

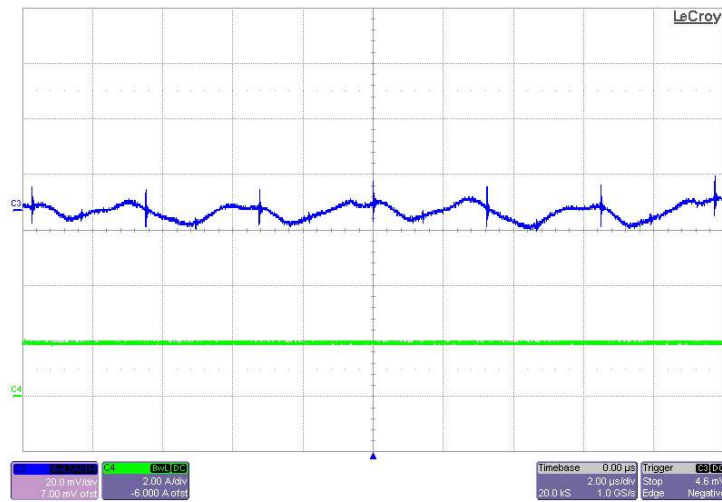
Channel 4 – Green : Output Current – (2A/Division)



No Load, Measured Before the USB Switch



4.2A Load, Measured Before the USB Switch



2.1A Load, Measured After the USB Switch at the End of an iPhone Cable

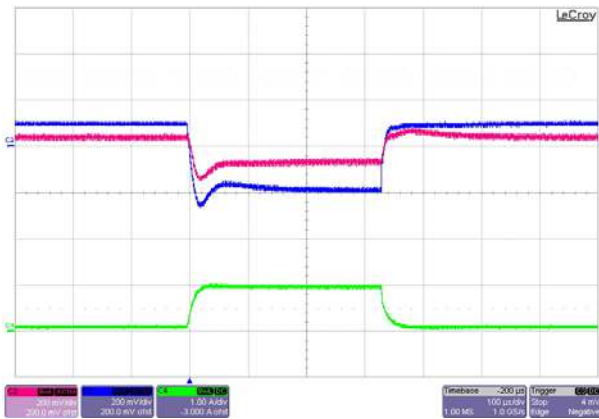
### 5 Transient Response – (TPS40170 : 5V@2.1A (x2))

The transient response of the converter is shown in the figure below. The input voltage is 12V. The current is pulsed from 0.1A to 1A, 1A to 2A and 0.1A to 2A. The timebase is set to 2ms/Division. The cable droop compensation is set to increase the output voltage 200mV at ~1.3A

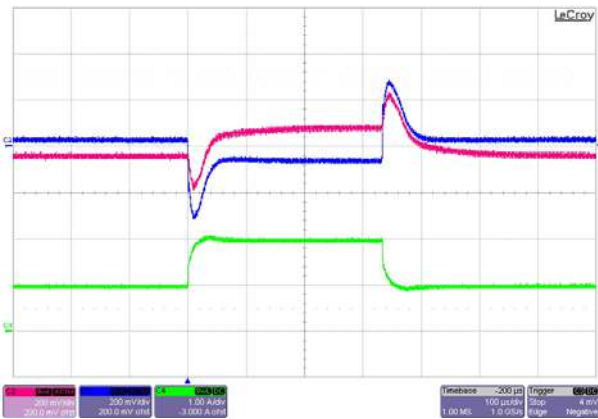
Channel 2 – Pink : Output Voltage Before the USB Switch – (200mV/Division; AC Coupled)

Channel 3 – Blue : Output Voltage After the USB Switch – (200mV/Division; AC Coupled)

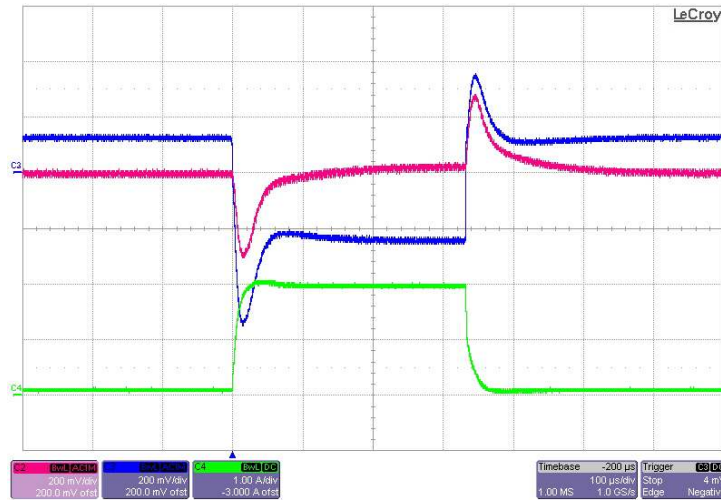
Channel 4 – Green : Output Current – (1A/Division)



0.1A to 1A (no cable droop compensation)



1A to 2A



0.1 to 2A

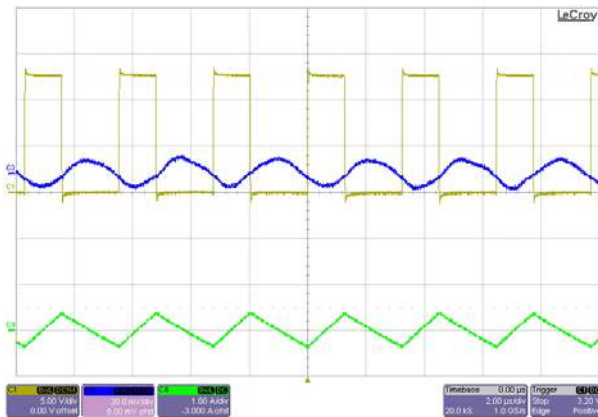
## 6 Switching Behavior – (TPS40170 : 5V@2.1A (x2))

The switching behavior of the converter is shown in the figure below. The input voltage is set to 12V, the output current is set to 4.2A. The timebase is set to 2us/Division.

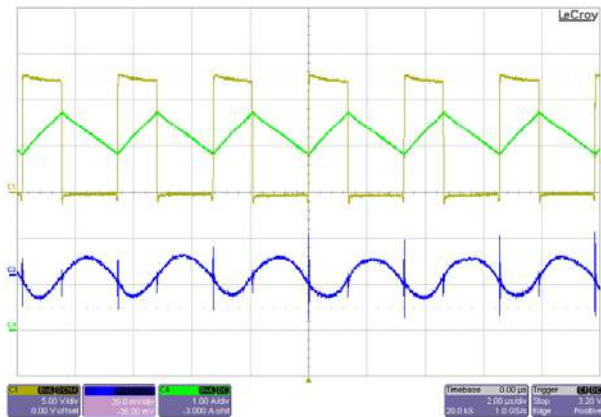
Channel 1 – Yellow : Switch Node – (5V/Division)

Channel 3 – Blue : Output Voltage Before the USB Switch – (20mV/Division; AC Coupled)

Channel 4 – Green : Inductor Ripple Current – (1A/Division)



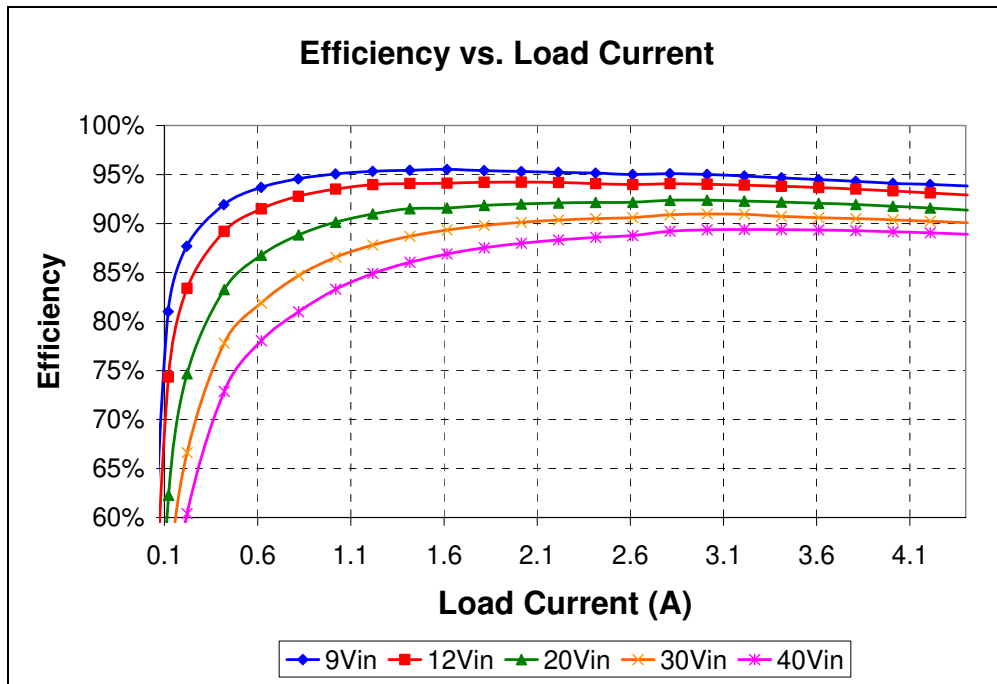
No Load



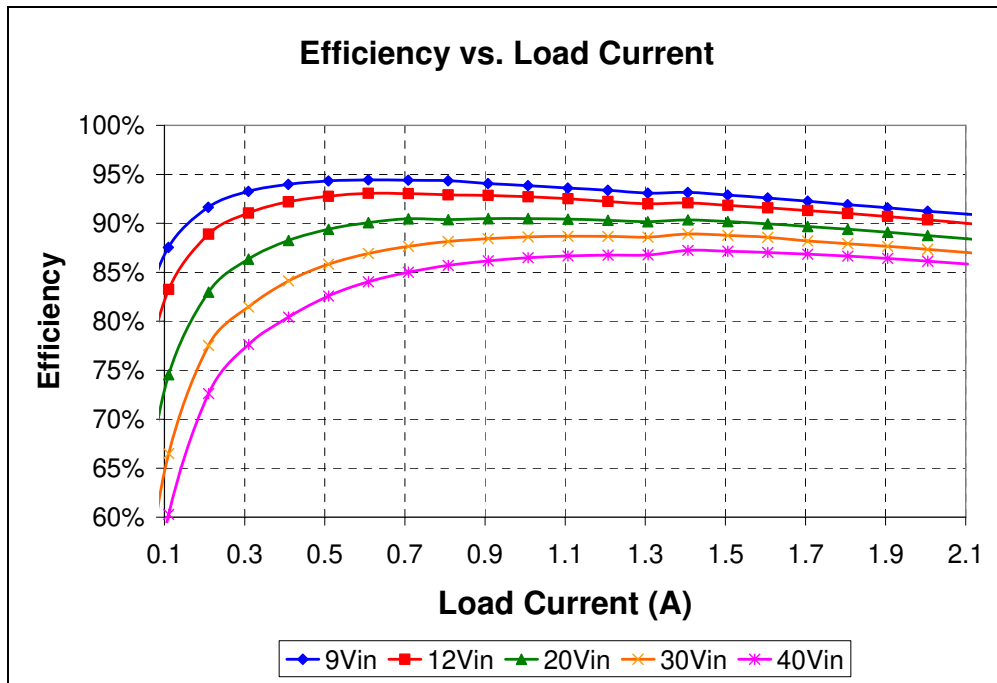
4.2A Load

## 7 Efficiency – (TPS40170 : 5V@2.1A (x2))

The efficiency of the converter is shown in the figures below.



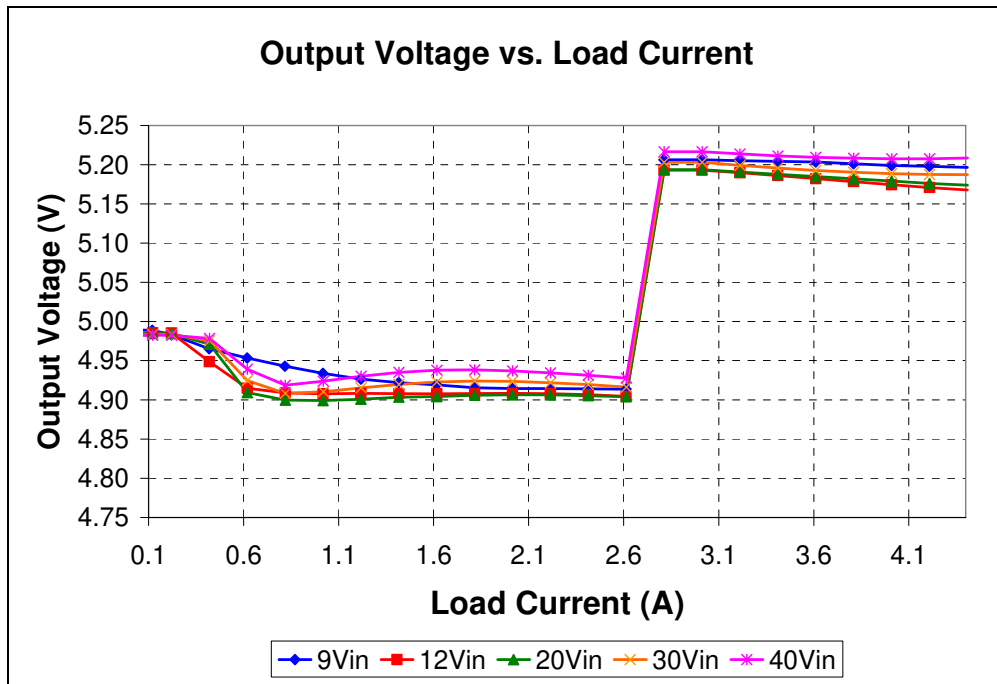
Efficiency Before the USB Switch



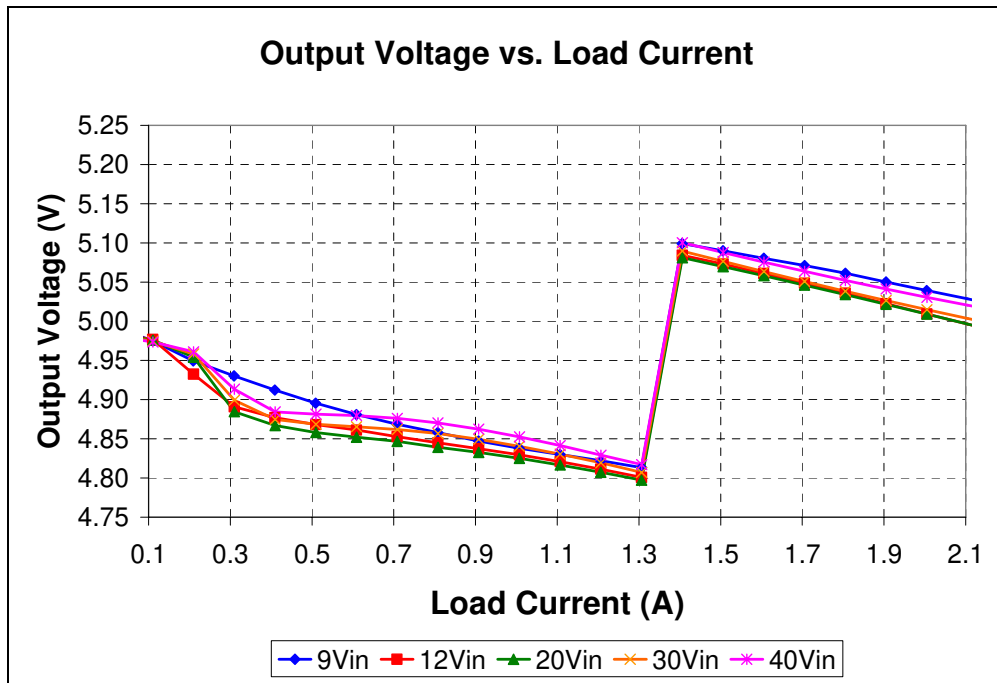
Efficiency After the USB Switch

## 8 Load Regulation – (TPS40170 : 5V@2.1A (x2))

The load regulation of the converter is shown in the figure below.



Output Load Regulation Before the USB Switch

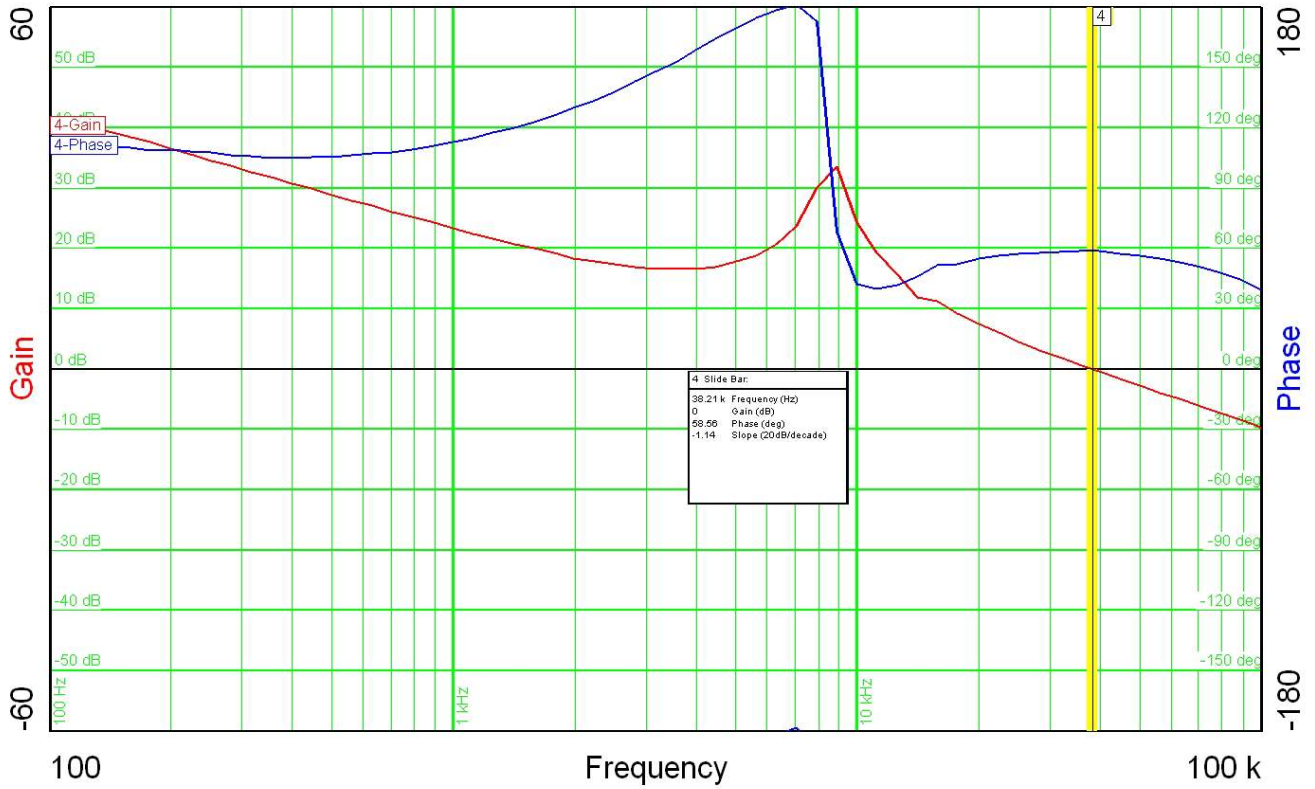


Output Load Regulation After the USB Switch



### 9 Loop Response – (TPS40170 : 5V@2.1A (x2))

The loop response of the converter is shown in the image below. The input is 12V, the outputs are fully loaded.





## IMPORTANT NOTICE AND DISCLAIMER

TI PROVIDES TECHNICAL AND RELIABILITY DATA (INCLUDING DATASHEETS), DESIGN RESOURCES (INCLUDING REFERENCE DESIGNS), APPLICATION OR OTHER DESIGN ADVICE, WEB TOOLS, SAFETY INFORMATION, AND OTHER RESOURCES "AS IS" AND WITH ALL FAULTS, AND DISCLAIMS ALL WARRANTIES, EXPRESS AND IMPLIED, INCLUDING WITHOUT LIMITATION ANY IMPLIED WARRANTIES OF MERCHANTABILITY, FITNESS FOR A PARTICULAR PURPOSE OR NON-INFRINGEMENT OF THIRD PARTY INTELLECTUAL PROPERTY RIGHTS.

These resources are intended for skilled developers designing with TI products. You are solely responsible for (1) selecting the appropriate TI products for your application, (2) designing, validating and testing your application, and (3) ensuring your application meets applicable standards, and any other safety, security, or other requirements. These resources are subject to change without notice. TI grants you permission to use these resources only for development of an application that uses the TI products described in the resource. Other reproduction and display of these resources is prohibited. No license is granted to any other TI intellectual property right or to any third party intellectual property right. TI disclaims responsibility for, and you will fully indemnify TI and its representatives against, any claims, damages, costs, losses, and liabilities arising out of your use of these resources.

TI's products are provided subject to TI's Terms of Sale (<https://www.ti.com/legal/termsofsale.html>) or other applicable terms available either on [ti.com](https://www.ti.com) or provided in conjunction with such TI products. TI's provision of these resources does not expand or otherwise alter TI's applicable warranties or warranty disclaimers for TI products.

Mailing Address: Texas Instruments, Post Office Box 655303, Dallas, Texas 75265  
Copyright © 2021, Texas Instruments Incorporated