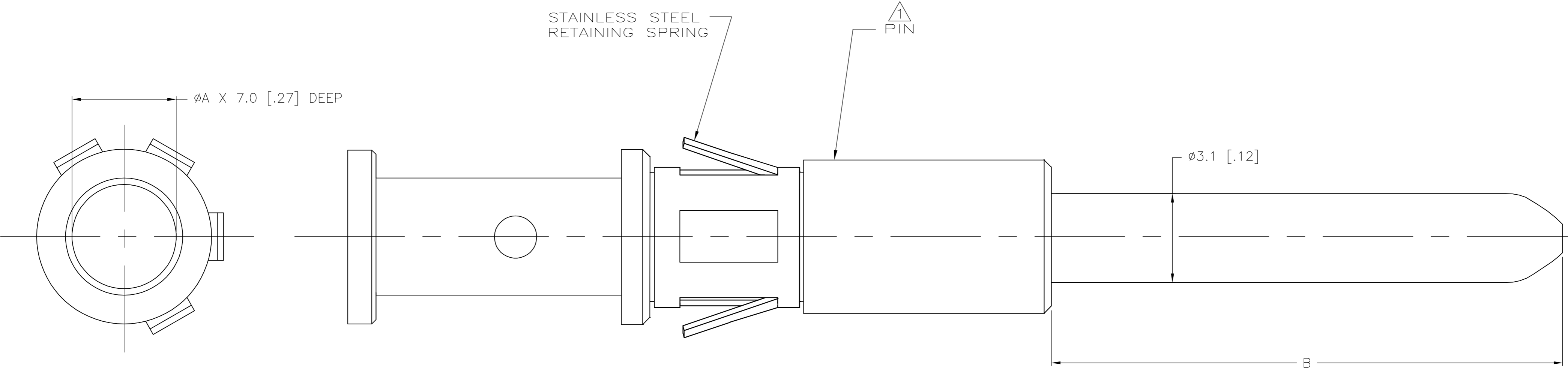


THIS DRAWING IS UNPUBLISHED. RELEASED FOR PUBLICATION
 © COPYRIGHT BY TYCO ELECTRONICS CORPORATION. ALL RIGHTS RESERVED.

| LOC | DIST | REVISIONS | | | |
|-----|------|-------------|--------------------------|----------|-------|
| P | LTR | DESCRIPTION | DATE | DWN | APVD |
| FT | 0 | G1 | REVISED PER ECO-06-29166 | 12/13/06 | SS GS |



HOT MATE

| | | | | | |
|--------|-----------------|--------------|--------------|----------|------------|
| NOTE 2 | FIRST | 13.75 [.541] | Ø3.68 [.145] | #10 | 1-194189-2 |
| NOTE 2 | FIRST | 13.75 [.541] | Ø4.60 [.181] | #8 | 1-194189-1 |
| NOTE 3 | SECOND | 11.75 [.461] | Ø2.67 [.105] | #12-#14 | 1-194189-0 |
| NOTE 2 | THIRD | 9.75 [.384] | Ø2.67 [.105] | #12-#14 | 194189-9 |
| NOTE 2 | THIRD | 9.75 [.384] | Ø3.68 [.145] | #10 | 194189-8 |
| NOTE 2 | THIRD | 9.75 [.384] | Ø4.60 [.181] | #8 | 194189-7 |
| NOTE 2 | SECOND | 11.75 [.461] | Ø2.67 [.105] | #12-#14 | 194189-6 |
| NOTE 2 | FIRST | 13.75 [.541] | Ø2.67 [.105] | #12-#14 | 194189-3 |
| FINISH | MATING SEQUENCE | B | A | WIRE AWG | PART NO. |

- 1 MATERIAL: TELLURIUM COPPER.
- 2. FINISH: SILVER PLATE OVER NICKEL PLATE.
- 3. FINISH: GOLD PLATE OVER NICKEL PLATE.

THIS DRAWING IS A CONTROLLED DOCUMENT. DWN 28/SEP/95
 D.A.P.
 CHK -
 APVD -

tyco Tyco Electronics Corporation
Electronics Harrisburg, PA 17105-3608

DIMENSIONS: mm TOLERANCES UNLESS OTHERWISE SPECIFIED:
 0 PLC ± -
 1 PLC ± -
 2 PLC ± -
 3 PLC ± -
 4 PLC ± -
 ANGLES ± -
 FINISH -

PRODUCT SPEC -
 APPLICATION SPEC -
 WEIGHT -

NAME PIN ASSEMBLY, 3 MM
 SIZE A2 CAGE CODE 00779 DRAWING NO C=194189 RESTRICTED TO -
 CUSTOMER DRAWING SCALE - SHEET 1 of 1 REV G1