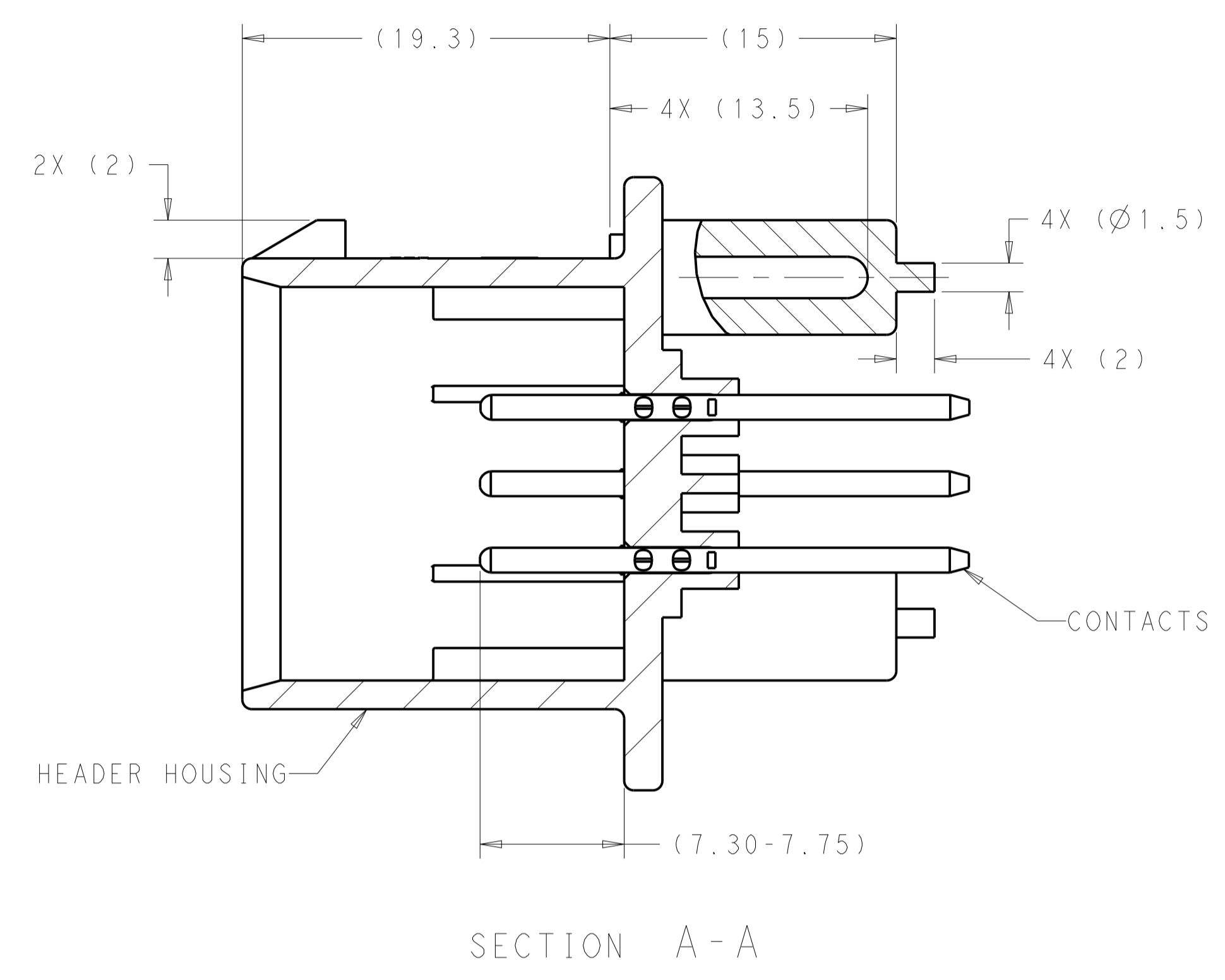
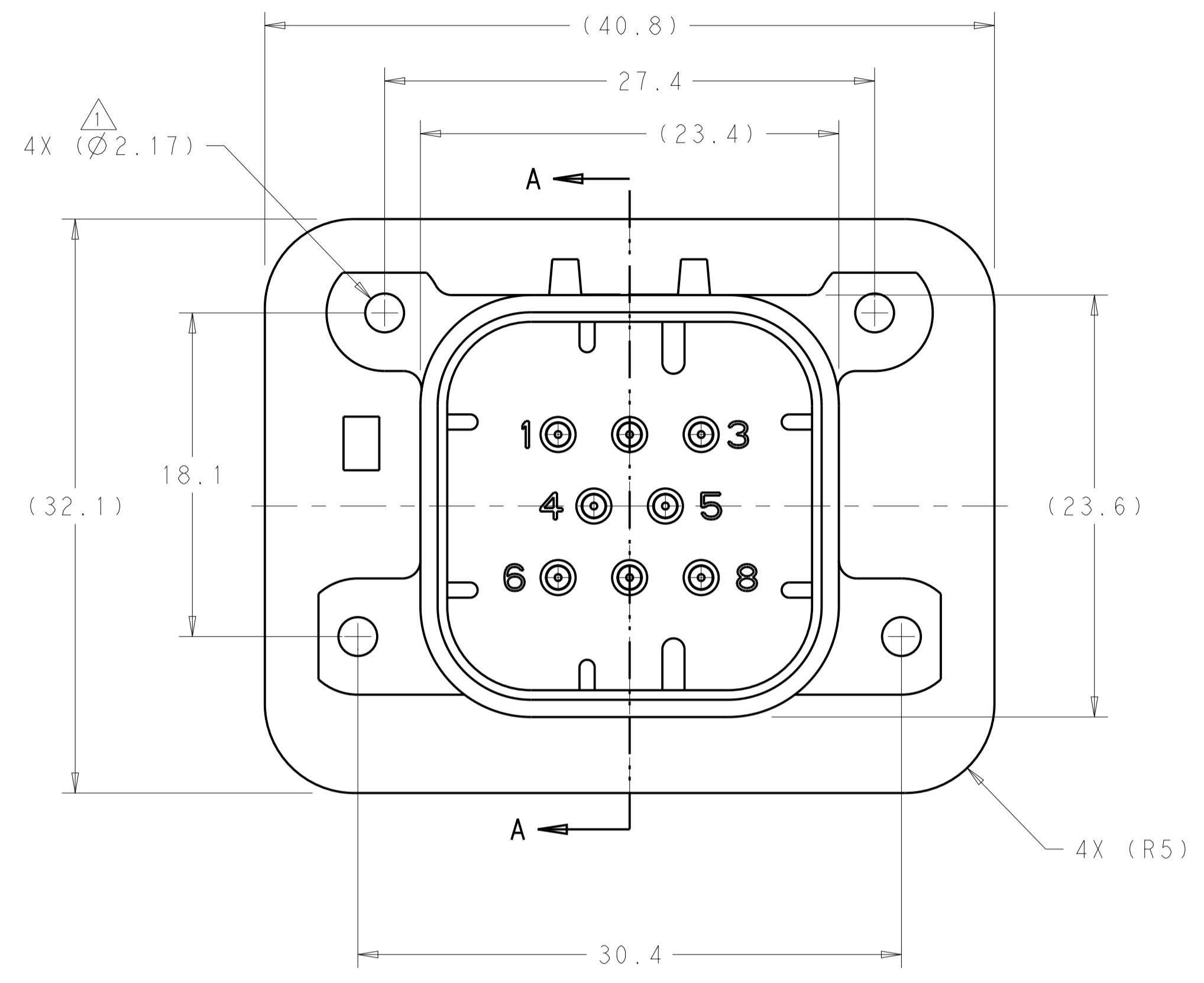
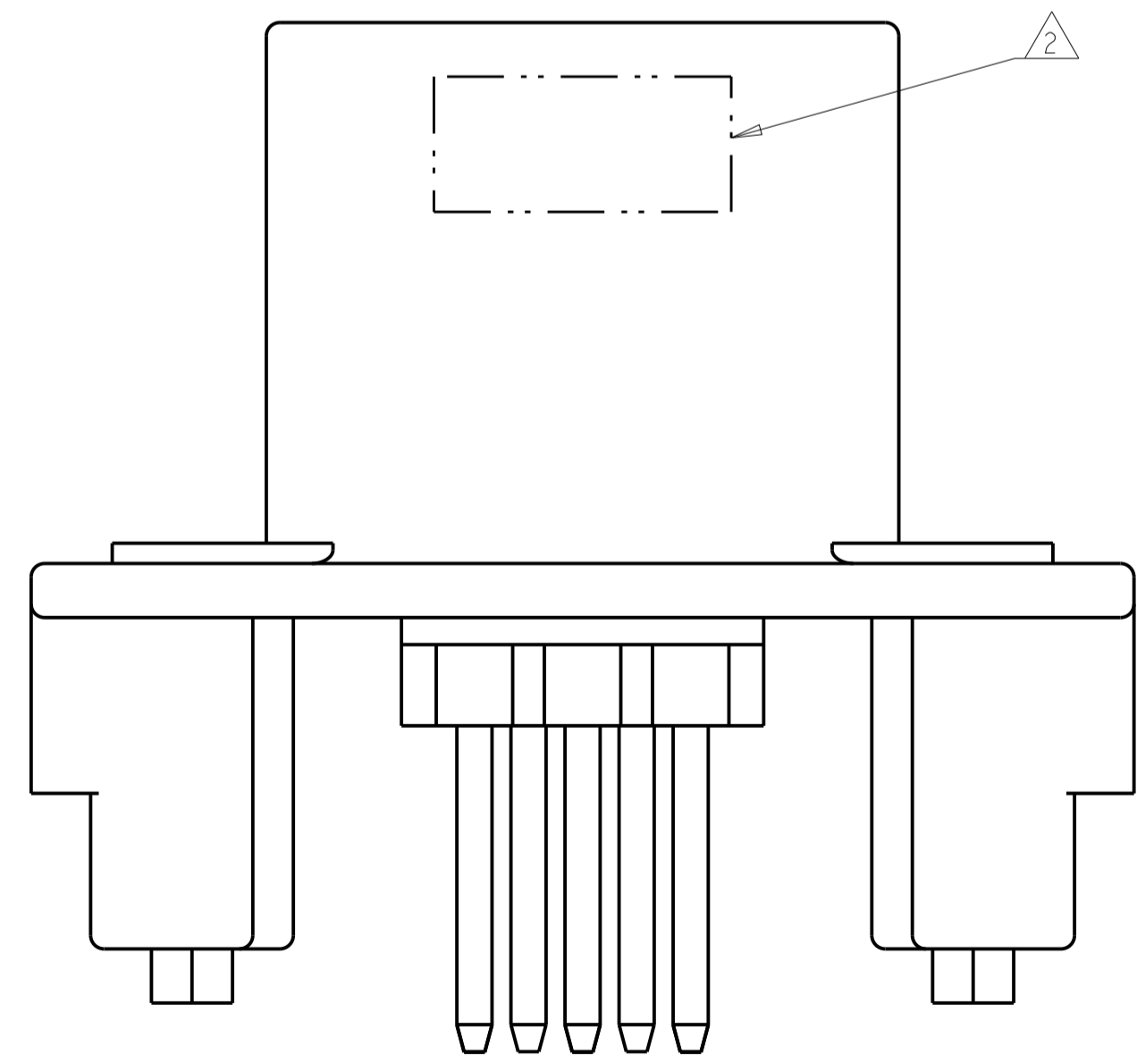


REVISIONS				
P.	LTN	DESCRIPTION	DATE	APVD
B11		REV PER ECO-21-001365	29JAN2021	DS DS



- ⚠ SUGGESTED MOUNTING SCREW SIZE IS $\varnothing 2.50-3.00\text{mm}$ [$\varnothing 0.099 - 0.118$ INCH] SELF TAPPING THREAD FORMING SCREW, SUCH AS DELTA PT, TO BE DRIVEN AT 0.6-0.8 N-m. THE CUSTOMER SHOULD TEST THE SCREW SIZE AND TYPE IN ORDER TO VERIFY THEIR SELECTION FOR THEIR APPLICATION.
- ⚠ DATE CODE IN THIS LOCATION USING 5 DIGIT CODE. FIRST 2 DIGITS = YEAR, SECOND 2 DIGITS = WEEK, LAST DIGIT = DAY.
- ⚠ MATERIALS: HEADER HOUSING - GLASS FILLED PBT; PINS - TIN OR GOLD PLATED BRASS.
- ⚠ HOUSING COLORS ARE MECHANICALLY KEYS TO MATE ONLY WITH IDENTICALLY COLORED PLUG ASSEMBLIES.
- 5. HEADER MATES TO PLUG ASSEMBLY 776286 WHICH USES REELED TERMINAL 770520 OR LOOSE PIECE TERMINAL 770854.



776275-1 & 1-776275-1 SHOWN

HEADER COLOR	PLATING	PART NUMBER
NATURAL	GOLD	1-776275-2
BLACK	GOLD	1-776275-1
NATURAL	TIN	776275-2
BLACK	TIN	776275-1

THIS DRAWING IS A CONTROLLED DOCUMENT.		OWN: D. STRAUSSER 29 JAN 2010	
DIMENSIONS: mm		CHK: D. STRAUSSER 22 MAR 2010	
TOLERANCES UNLESS OTHERWISE SPECIFIED:		APVD: D. STRAUSSER 27 APR 2010	TE TE Connectivity NAME: HEADER ASSEMBLY, 8 POSITION, VERTICAL, AMPSEAL
0 PLC ±0.2		PRODUCT SPEC: 108-1329	
1 PLC ±0.2		APPLICATION SPEC: 114-16016	SIZE: A1
2 PLC ±0.2		WEIGHT: 13.12g	CAGE CODE: 00779
3 PLC ±0.2		CUSTOMER DRAWING	DRAWING NO: 776275
ANGLES ±0.5		SCALE: 4:1	SHEET: 1 OF 2
FINISH: 3		RESTRICTED TO:	REV: B11

