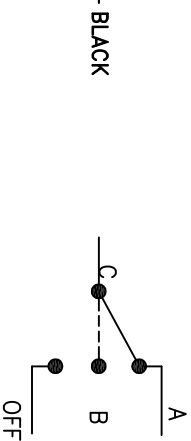
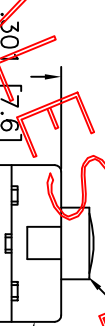
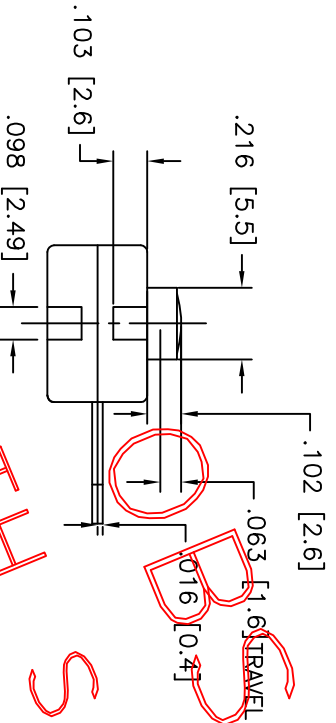
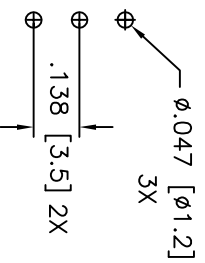
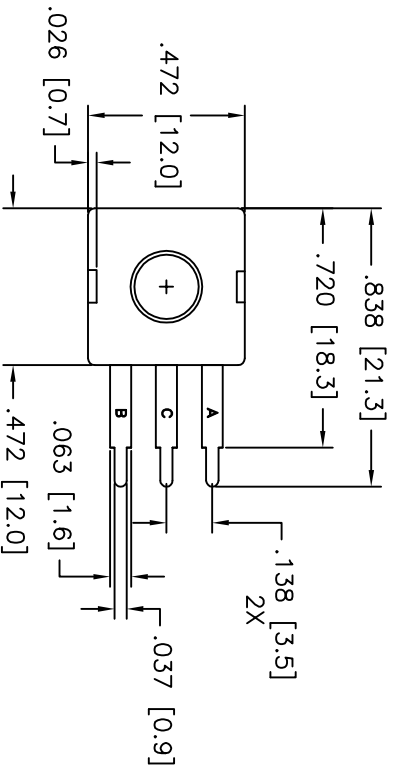


LTR	EN	DESCRIPTION	APPR	BY	DATE
A	-	INITIAL RELEASE	RB	NH	09-30-05
B	-	ADDED CUSTOMER PART# AND CHANGE DIMENSIONS FROM MM TO INCH.	RB	DC	12-20-05
B1	-	ADDED COLOR OF ACTUATOR (BLUE).	RB	DC	12-28-05
B2	-	CHANGE SCHEMATIC DIAGRAM TO MATCH SWITCH OPERATION.	RB	DC	02-13-06
C	-	UPDATED DRAWING TO MATCH SAMPLE PARTS. CALLED OUT DIMENSIONS BOTH IN INCHES & MM.	MT	DC	10-18-07
C1	-	ADDED HEIGHT OF PLUNGER AND TRAVEL.	MT	DC	08-06-08
C2	-	ADDED TOLERANCES	MT	DC	08-07-08



SCHEMATIC

JUDCO INVENTORY NO. 50-0089-00
 SWITCH TYPE: SPDT J-977-8 (ON A-ON B-OFF)
 ELECTRICAL RATING: 12 VDC, 500mA

CUSTOMER:
 CUSTOMER PN:
 APPROVED BY: _____
 DATE: _____

CHECK

RECOMMENDED MOUNTING PATTERN USING

This document embodies a product, component, and/or design proprietary to JUDCO MANUFACTURING INC., and which is protected either as a trade secret, by U.S. Patent, or by copyright. It may not be used in any way without written express consent of JUDCO MANUFACTURING INC.

DO NOT SCALE DRAWING
 DIMENSIONS IN INCHES (MM)
 UNLESS OTHERWISE SPECIFIED
 TOLERANCES: ANGLE: X: X' ±5'
 X.XX ±.012 (0.30) X.X' ±3'
 X.XXX ±.008 (0.20) X.XX' ±1'
 X.XXX ±.004 (0.10) X.XX' ±1'

HARBOR CITY CALIFORNIA
 MINI FLAT PACK J977-8
 W/STRAIGHT TERMINALS

DRAWN: NH 09-30-05
 APPR: KJ 08-06-08

DWG. NO. 1415-860

1415UB60C1.DWG

SHEET 1 OF 1