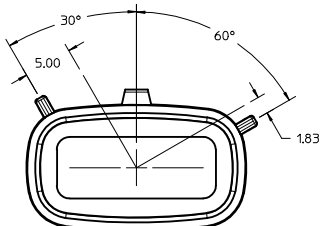
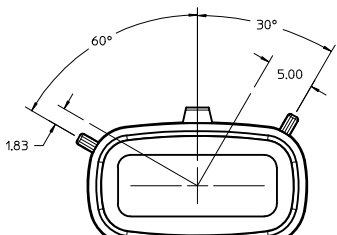


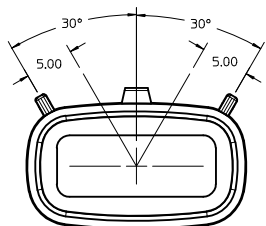
**KEYING OPTION "A"**  
SUGGESTED COLOR: BLACK



**KEYING OPTION "B"**  
SUGGESTED COLOR: GREY

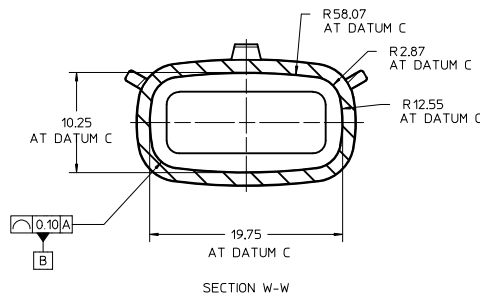
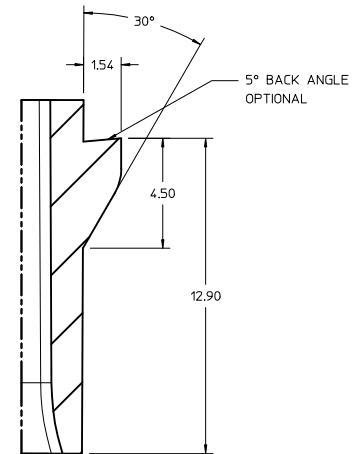
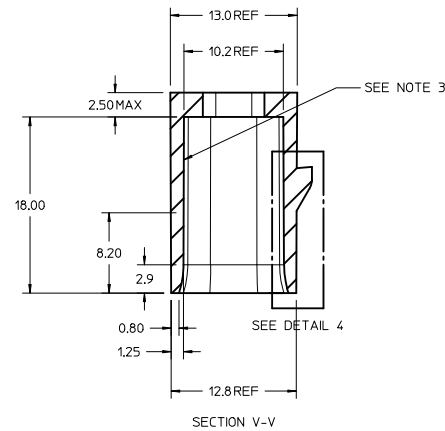
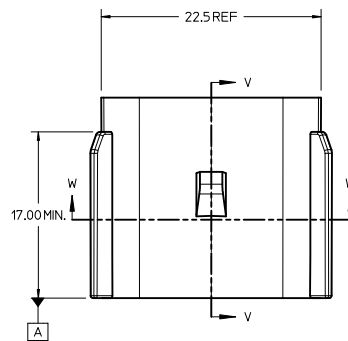
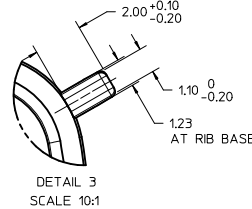
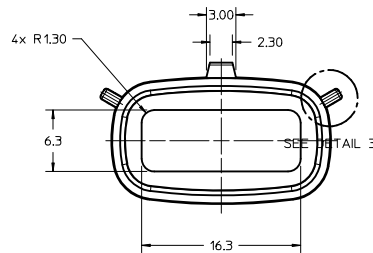


**KEYING OPTION "C"**  
SUGGESTED COLOR: BROWN



**KEYING OPTION "D"**  
SUGGESTED COLOR: GREEN

**CUSTOMER SHROUD DESIGN DETAILS**

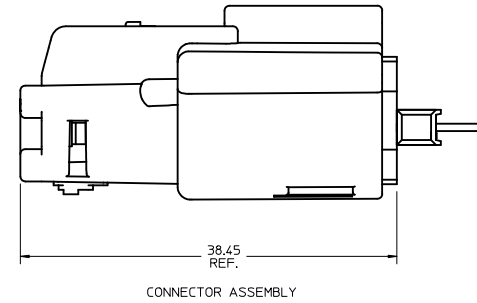
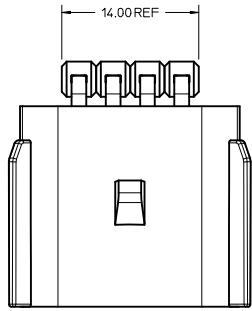
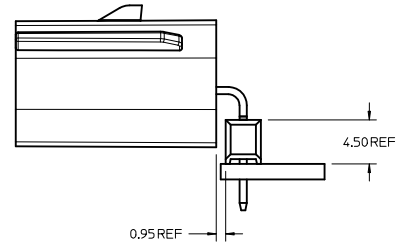
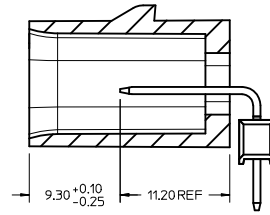
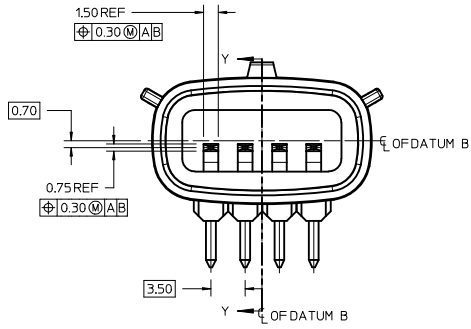


**NOTES:**

1. REFER TO MOLEX SALES DRAWING SD-75900-002 FOR THE HEADER ASSEMBLY PRODUCT DETAILS AND RECOMMENDED PCB LAYOUT.
2. KEYING OPTIONS A-D AND SUGGESTED COLORS COMPLY TO THE POLARIZATION STANDARDS ESTABLISHED FOR MATING WITH A MX150 FEMALE CONNECTOR.
3. INTERIOR SHROUD SURFACE MUST BE FREE OF DEFECTS AND PARTING LINES ALL AROUND TO ENSURE PROPER SEALING OF THE MATING MX150 FEMALE CONNECTOR.
4. A FULL SHROUD ON THE MATING CONNECTOR IS REQUIRED TO INSURE THE HEADER SHROUD POLARIZATION FEATURES (OPTIONS A-D) WILL FUNCTION PROPERLY. THE FULL SHROUD ALSO PREVENTS SCOOP DAMAGE TO THE HEADER CONTACTS.
5. PERMISSIBLE DRAFT ANGLE 0.25° MAXIMUM.
6. RADII ON ALL CORNERS SHOWN SHARP OR ALL UNSPECIFIED RADII 0.25 EXCEPT AS NOTED.
7. DIMENSIONS SHOWN ABOUT A CENTERLINE ARE SYMMETRICAL ABOUT THAT CENTERLINE WITHIN HALF THE SPECIFIED TOLERANCE.

<b>INITIAL RELEASE</b> EC NO: UCP2011-3372 DRAWN BY: DROSCA 2011/06/17 CHECKED BY: JCOMERC I 2011/06/17 APPROVED BY: JCOMERC I 2011/06/17 REV: 1	QUALITY SYMBOLS ▽=0 ▽=0	GENERAL TOLERANCES (UNLESS SPECIFIED) 4 PLACES ±--- INCH 3 PLACES ±--- INCH 2 PLACES ±0.10 INCH 1 PLACE ±0.2 INCH ANGULAR ±1/2°	DIMENSION STYLE MM ONLY	SCALE 4:1	DESIGN UNITS METRIC	THIRD ANGLE PROJECTION	
	DRAFT WHERE APPLICABLE MUST REMAIN WITHIN DIMENSIONS	DRAWN BY: DROSCA 2011/06/17 CHECKED BY: JCOMERC I 2011/06/17 APPROVED BY: JCOMERC I 2011/06/17	MATERIAL NO. 759001040	DOCUMENT NO. AS-75900-104	APPLICATION SPEC 1X4 MX150 HEADER SHROUD DETAILS		MOLEX INCORPORATED
	SIZE D	THIS DRAWING CONTAINS INFORMATION THAT IS PROPRIETARY TO MOLEX INCORPORATED AND SHOULD NOT BE USED WITHOUT WRITTEN PERMISSION					SHEET NO. 1 OF 2

# HEADER APPLICATION DETAILS

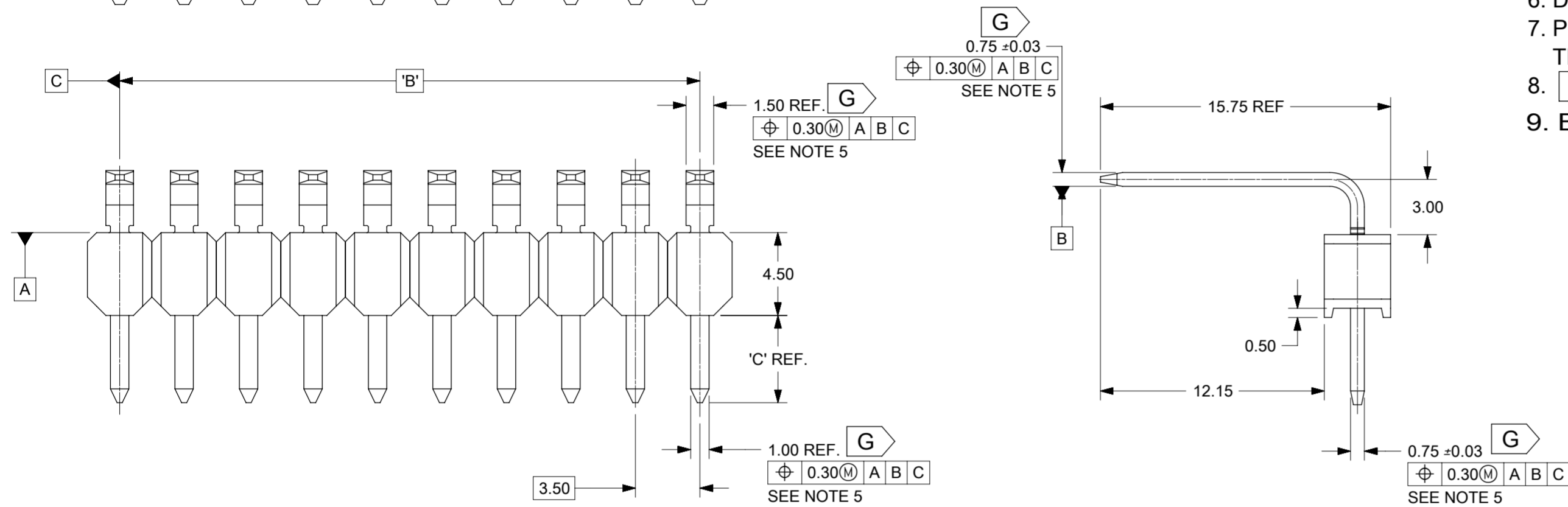
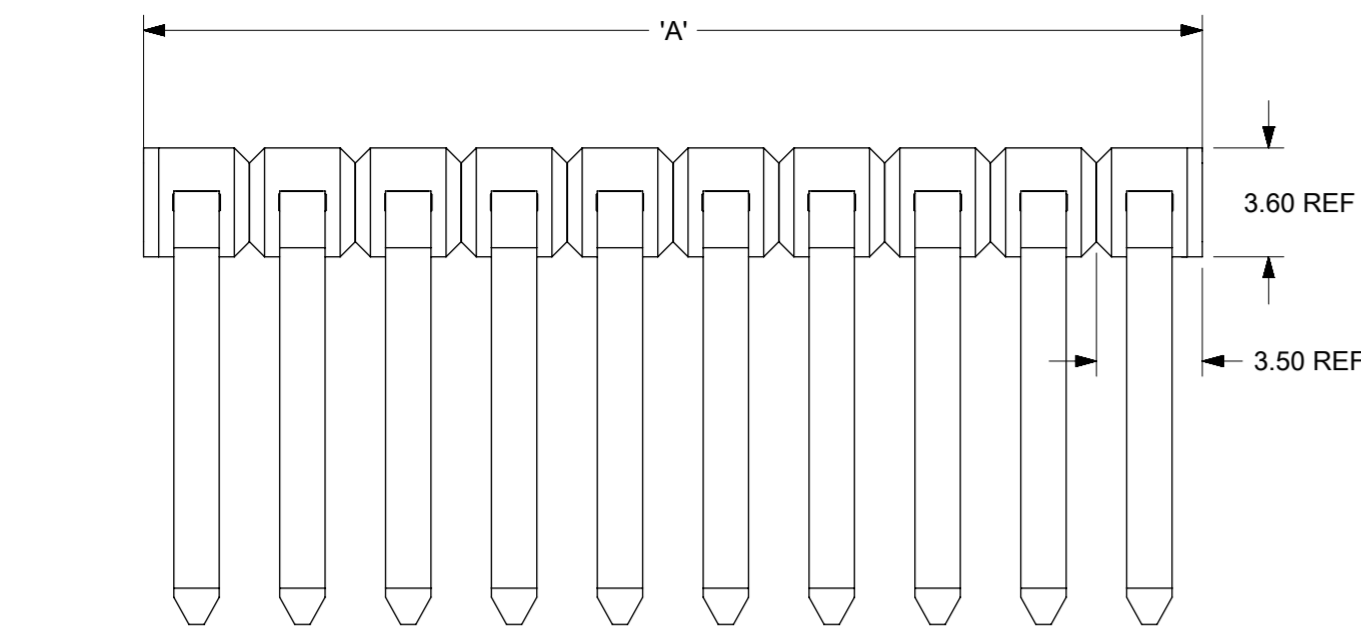


CONNECTOR ASSEMBLY

**NOTES:**

- ADHERENCE TO THE HEADER APPLICATION DETAILS IS IMPERATIVE TO ENSURE PROPER SHROUD SEALING AND CONTACT ALIGNMENT WHEN MATED WITH A MX150 FEMALE CONNECTOR.

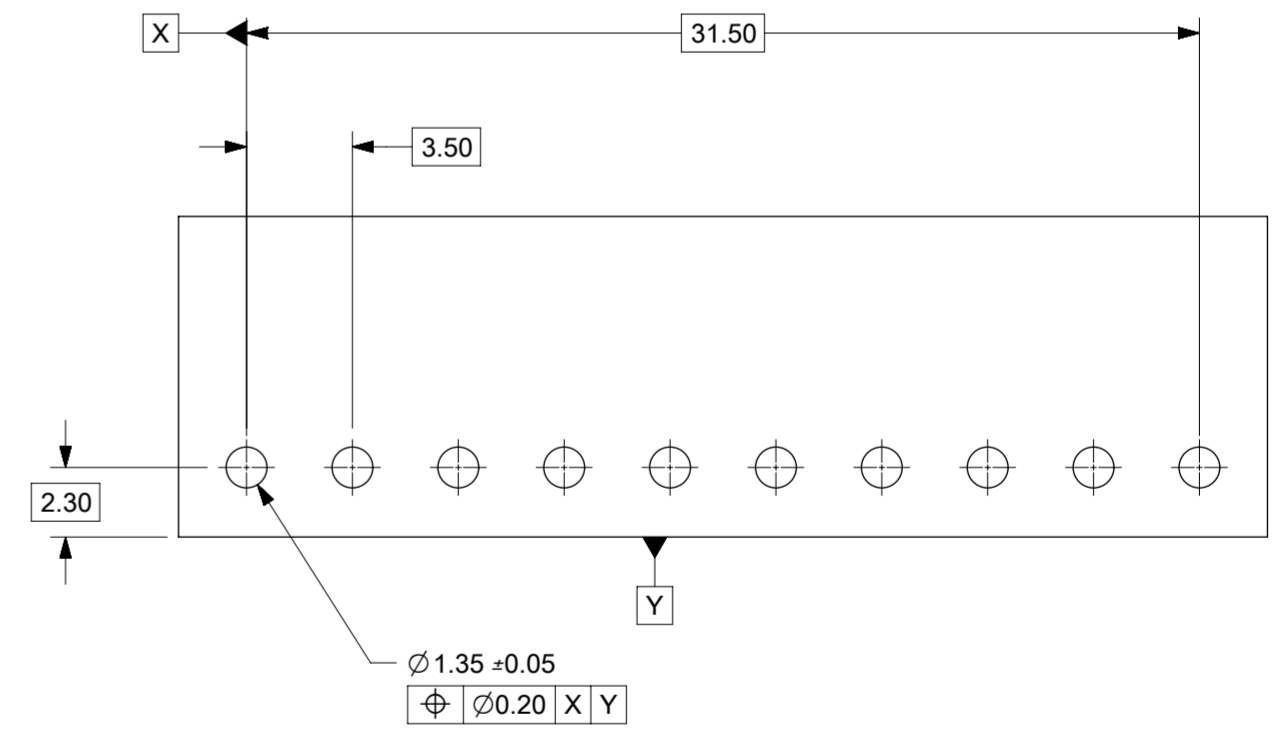
SEE SHEET 1 IEC NO: UCP2011-3372 DRAWN BY: DROSCA CHYK: JCOMERCI APPR: JCOMERCI DATE: 2011/06/17 DATE: 2011/06/17 DATE: 2011/06/17	QUALITY SYMBOLS	GENERAL TOLERANCES (UNLESS SPECIFIED)	DIMENSION STYLE	SCALE	DESIGN UNITS	THIRD ANGLE PROJECTION
	▽=0 ▽=0	mm INCH 4 PLACES ± --- ± --- 3 PLACES ± --- ± --- 2 PLACES ± 0.10 ± --- 1 PLACE ± 0.2 ± --- ANGULAR ± 1/2°	MM ONLY	4:1	METRIC	DRAWN BY: DROSCA CHECKED BY: JCOMERCI APPROVED BY: JCOMERCI DATE: 2011/06/17 DATE: 2011/06/17 DATE: 2011/06/17
	DRAFT WHERE APPLICABLE MUST REMAIN WITHIN DIMENSIONS	MATERIAL NO: SEE SHEET 1 SIZE: D	DATE: 2011/06/17 DOCUMENT NO: AS-75900-104	APPLICATION SPEC 1X4 MX150 HEADER SHROUD DETAILS	MOLEX INCORPORATED	SHEET NO: 2 OF 2
	THIS DRAWING CONTAINS INFORMATION THAT IS PROPRIETARY TO MOLEX INCORPORATED AND SHOULD NOT BE USED WITHOUT WRITTEN PERMISSION					



NOTES:

1. TERMINAL MAT'L: ALLOY C26000, CARTRIDGE BRASS
2. WAFER MAT'L: 30% GLASS FILLED LCP, 94V-0, COLOR BLACK.
3. TERMINAL PLATING:  
 OPTION 4 - 1.5µm MIN MATTE TIN OVERALL OVER 1.25µm NICKEL OVERALL  
 OPTION 1 - 2.5µm MIN MATTE TIN OVERALL OVER 1.25µm NICKEL OVERALL  
 OPTION 2 - 1.25µm NICKEL OVERALL 2.5µm MIN SELECT MATTE TIN PC TAIL AREA 0.05-0.25µm SELECT GOLD CONTACT AREA  
 OPTION 3 - 1.25µm NICKEL OVERALL 2.5µm MIN SELECT MATTE TIN PC TAIL AREA 0.75µm SELECT GOLD CONTACT AREA
4. HEADER ASSEMBLIES ARE TUBE PACKAGED PER PK-36518-352.
5. ALL THE POSITIONAL TOLERANCES SHOULD BE MEASURED AT TIP OF THE TERMINALS.
6. DATUM SHOULD BE CONSIDERED FROM THE EDGES OF THE HOUSING.
7. POSITION TOLERANCES OF THE PIN AT MATING SIDE SHOULD BE MAINTAINED AT 0.3 MM IN THE FINAL MODULE BY CUSTOMER.
8. **G** DENOTES DIMENSIONS THAT CAN BE QUALIFIED WITH A GAUGE.
9. BLADE GEOMETRY DOES NOT CONFORM TO USCAR SPECIFICATIONS.

PKT SIZE	PLATING OPTION	MATERIAL NUMBER	STATUS	"A" DIM	"B" DIM	"C" DIM	MATERIAL NUMBER	STATUS	"A" DIM	"B" DIM	"C" DIM
1 x 2	1	75900-0121	OBSOLETE	7.0	3.50 REF	3.05	75900-0122	OBSOLETE	7.0	3.50 REF	4.75
	2	75900-0221	OBSOLETE				75900-0222	OBSOLETE			
	3	75900-0321	OBSOLETE				75900-0322	OBSOLETE			
	4	75900-0421					75900-0422	OBSOLETE			
1 x 3	1	75900-0131	OBSOLETE	10.5	7.00	3.05	75900-0132	OBSOLETE	10.5	7.00	4.75
	2	75900-0231	OBSOLETE				75900-0232	OBSOLETE			
	3	75900-0331	OBSOLETE				75900-0332	OBSOLETE			
	4	75900-0431	OBSOLETE				75900-0432	OBSOLETE			
1 x 4	1	75900-0141	OBSOLETE	14.0	10.50	3.05	75900-0142	OBSOLETE	14.0	10.50	4.75
	2	75900-0241	OBSOLETE				75900-0242	OBSOLETE			
	3	75900-0341	OBSOLETE				75900-0342	OBSOLETE			
	4	75900-0441	OBSOLETE				75900-0442	OBSOLETE			
1 x 6	1	75900-0161		21.0	17.50	3.05	75900-0162	OBSOLETE	21.0	17.50	4.75
	2	75900-0261	OBSOLETE				75900-0262	OBSOLETE			
	3	75900-0361	OBSOLETE				75900-0362	OBSOLETE			
	4	75900-0461	OBSOLETE				75900-0462	OBSOLETE			
1 x 8	1	75900-0181	OBSOLETE	28.0	24.50	3.05	75900-0182	OBSOLETE	28.0	24.50	4.75
	2	75900-0281	OBSOLETE				75900-0282	OBSOLETE			
	3	75900-0381	OBSOLETE				75900-0382	OBSOLETE			
	4	75900-0481	OBSOLETE				75900-0482	OBSOLETE			
1 x 10	1	75900-0101	OBSOLETE	35.0	31.50	3.05	75900-0102	OBSOLETE	35.0	31.50	4.75
	2	75900-0201	OBSOLETE				75900-0202	OBSOLETE			
	3	75900-0301	OBSOLETE				75900-0302	OBSOLETE			
	4	75900-0401	OBSOLETE				75900-0402	OBSOLETE			



<b>SYMBOLS</b> A = 0 E = 0 F = 0 S = 0 T = 0 V = 0 W = 0 X = 0 Y = 0 Z = 0	THIS DRAWING CONTAINS INFORMATION THAT IS PROPRIETARY TO MOLEX ELECTRONIC TECHNOLOGIES, LLC AND SHOULD NOT BE USED WITHOUT WRITTEN PERMISSION		CURRENT REV DESC: TWO PN's 75900-0261 & 75900-0432 ARE OBSOLETE	
	DIMENSION UNITS	SCALE	EC NO: 633184	
	mm	1:1	DRWN: RYELAVATTITH	2020/02/26
	GENERAL TOLERANCES (UNLESS SPECIFIED)		CHK'D: RYELAVATTITH	2020/03/02
ANGULAR TOL ± 0.5°		APPR: SNAYAK01	2020/03/02	
4 PLACES ±		INITIAL REVISION:		
3 PLACES ±		DRWN: DROSCA	2010/10/12	
2 PLACES ± 0.13		APPR: JCOMERCI	2011/06/17	
1 PLACE ± 0.25		DOCUMENT NUMBER		
0 PLACES ±		SD-75900-002		
DRAFT WHERE APPLICABLE MUST REMAIN WITHIN DIMENSIONS		THIRD ANGLE PROJECTION	DRAWING	
		A2-SIZE	SERIES	
			75900	
		MATERIAL NUMBER		
		GENERAL MARKET		
		CUSTOMER		
		PSD 001		
		REVISION		
		C5		
		SHEET NUMBER		
		1 OF 1		