

Key Top Designed Specially for Projected-plunger-type B3F, B3FS, and B3W Switches

- Available in a wide range of colors and sizes.

RoHS Compliant



■ List of Models

For B3F, B3FS, and B3W Switches

| Color | 6 × 6 mm Switches B3F-1000, -1000-G, B3F-3000, -3000-G, -6000, B3W-1000, B3FS-1000 | | | 12 × 12 mm Switches B3F-4000, -5000, -5001, B3W-4000, B3FS-4000 | | |
|--------|--|-------------------|----------------|--|--------------------|-------------|
| | 4 × 4 mm Key Top | 6 mm dia. Key Top | D-type Key Top | 9 × 9 mm Key Top | 12 × 12 mm Key Top | 9.5-mm dia. |
| Ivory | B32-1000 | B32-2000 | B32-2100 | B32-1200 | B32-1300 | B32-1600 |
| Black | B32-1010 | B32-2010 | B32-2110 | B32-1210 | B32-1310 | B32-1610 |
| Orange | B32-1020 | --- | --- | B32-1220 | B32-1320 | B32-1620 |
| Yellow | B32-1030 | --- | --- | B32-1230 | B32-1330 | B32-1630 |
| Blue | B32-1040 | --- | --- | B32-1240 | B32-1340 | --- |
| Green | B32-1050 | --- | --- | B32-1250 | B32-1350 | --- |
| White | B32-1060 | --- | --- | B32-1260 | B32-1360 | --- |
| Red | B32-1080 | --- | --- | B32-1280 | B32-1380 | --- |

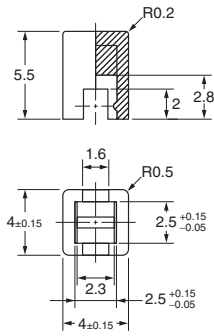
Note: Bulk Packed, 1000 pcs per bag. Order in multiple of the package quantity.

■ Characteristics

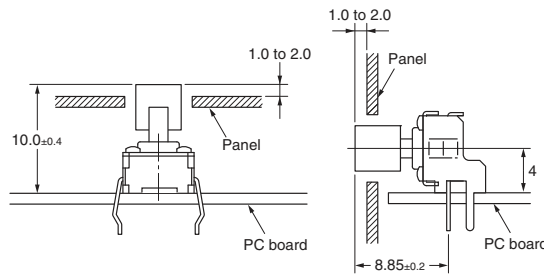
| | |
|-------------------------------|--|
| Ambient operating temperature | -25°C to +70°C at 60%RH max. (with no icing or condensation) |
| Ambient operating humidity | 35% to 85% (at 5 to 35°C) |

■ Dimensions (Unit: mm)

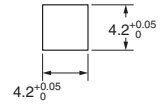
B32-10□0



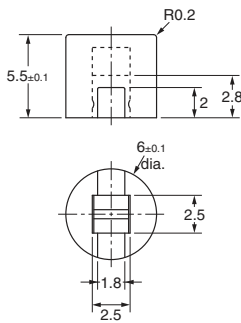
Reference Dimensions



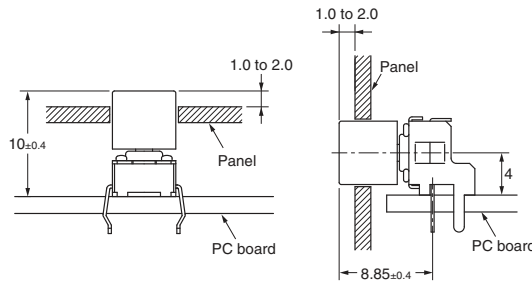
Panel Cutout



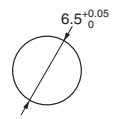
B32-2000
B32-2010



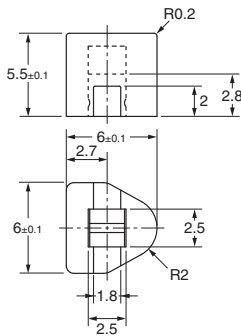
Reference Dimensions



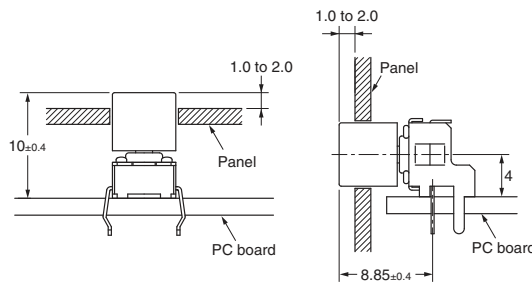
Panel Cutout



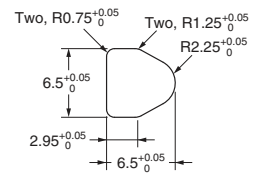
B32-2100
B32-2110



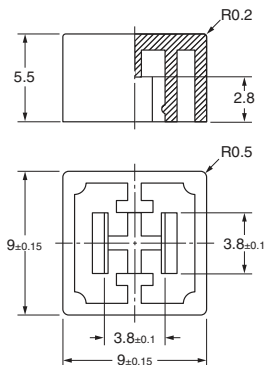
Reference Dimensions



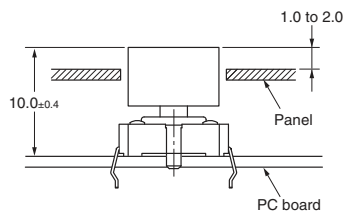
Panel Cutout



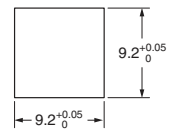
B32-12□0



Reference Dimensions

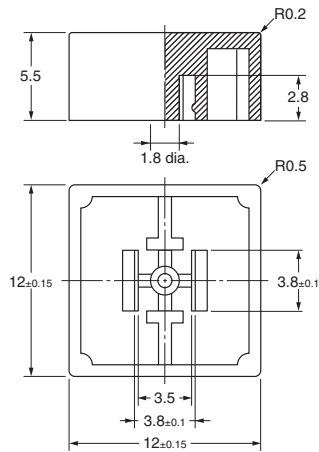
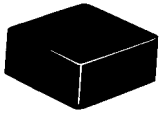


Panel Cutout

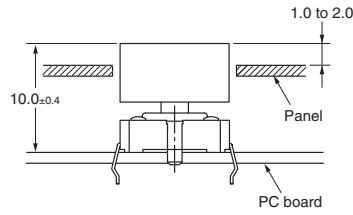


Note: Unless otherwise specified, a tolerance of ± 0.4 mm applies to all dimensions.

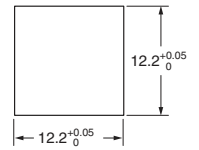
B32-13□0



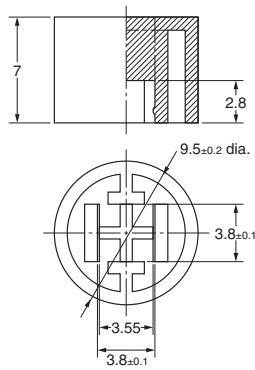
Reference Dimensions



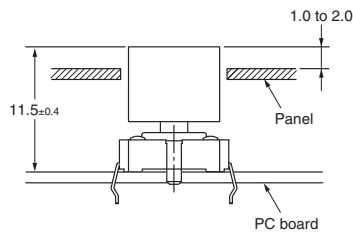
Panel Cutout



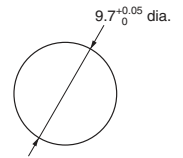
B32-16□0



Reference Dimensions



Panel Cutout



Note: Unless otherwise specified, a tolerance of ± 0.4 mm applies to all dimensions.

■ Precautions

Mount the Key Top on to the Switch after soldering, otherwise the Key Top may be deformed by the soldering heat.

Please check each region's Terms & Conditions by region website.

OMRON Corporation
Electronic and Mechanical Components Company

Regional Contact

Americas
<https://www.components.omron.com/>
Asia-Pacific
<https://ecb.omron.com.sg/>
Korea
<https://www.omron-ecb.co.kr/>

Europe
<http://components.omron.eu/>
China
<https://www.ecb.omron.com.cn/>
Japan
<https://www.omron.co.jp/ecb/>

© OMRON Corporation 2018 All Rights Reserved.
In the interest of product improvement, specifications are subject to change without notice.

Cat. No. A077-E1-07
1218(0207)(O)