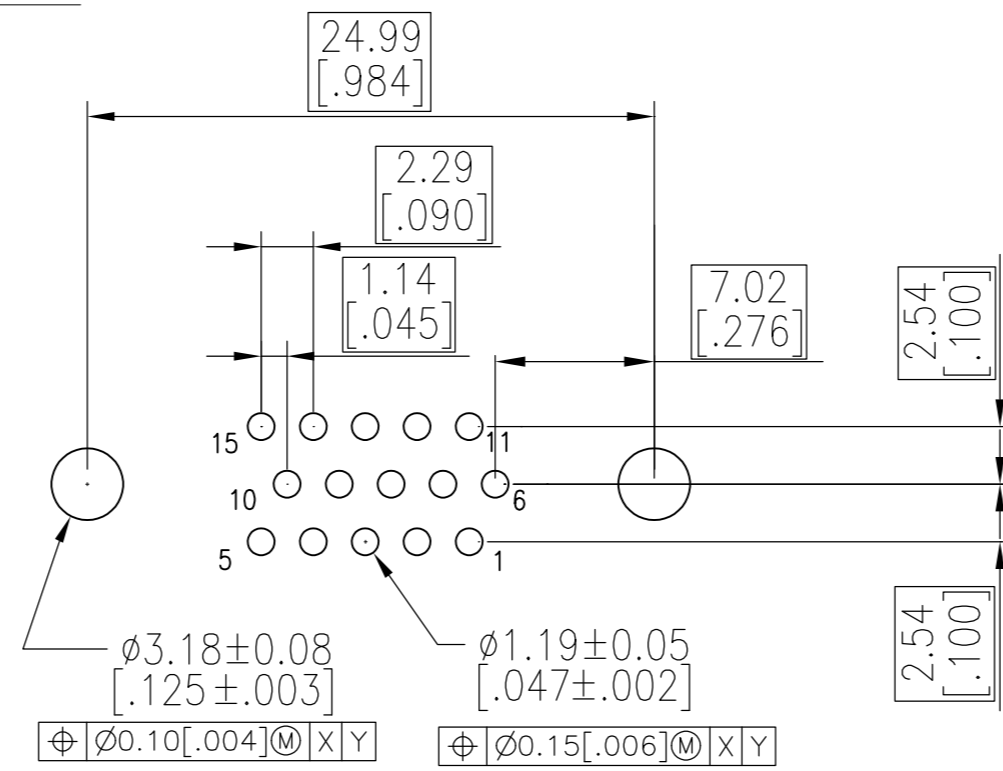
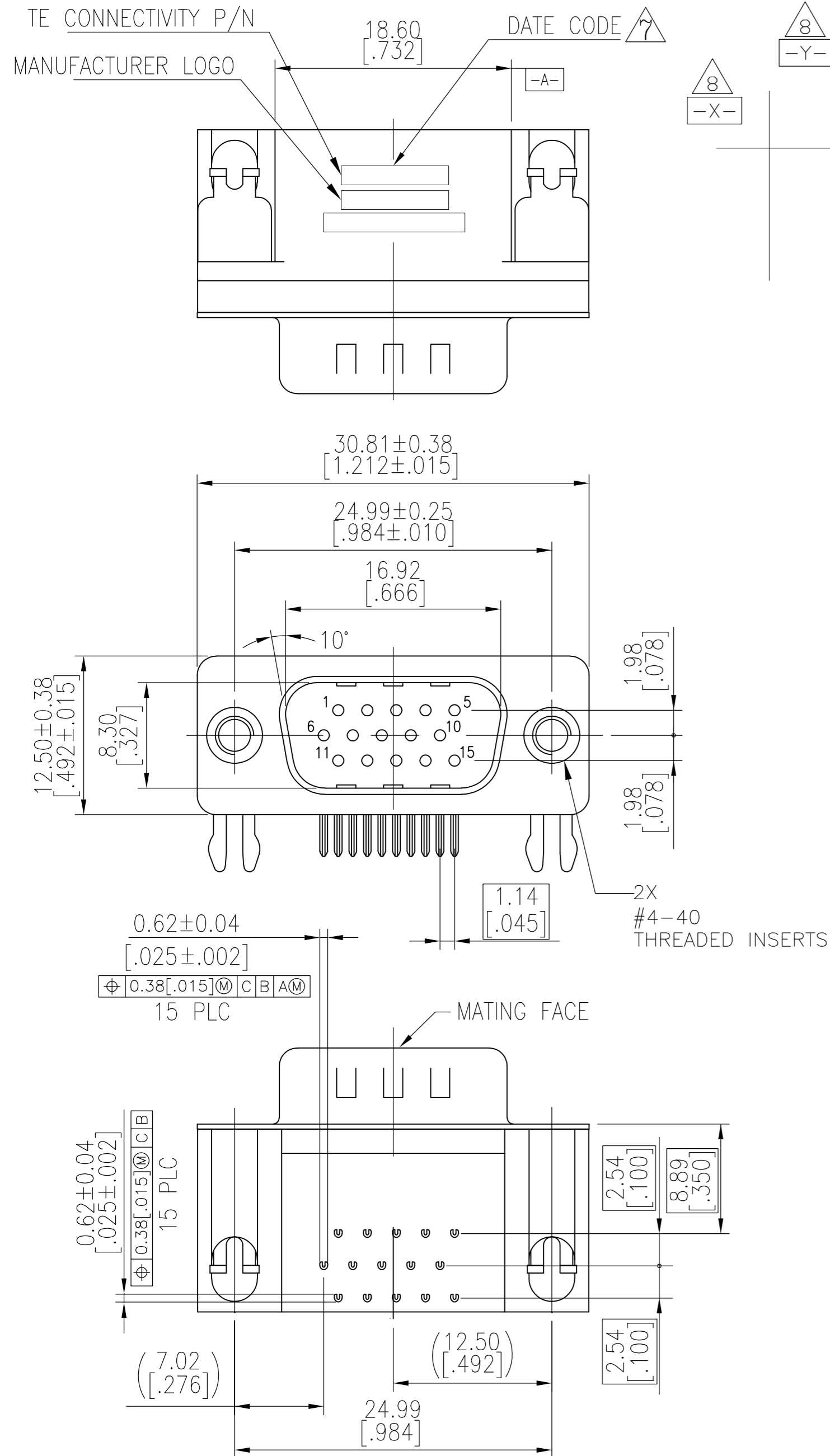
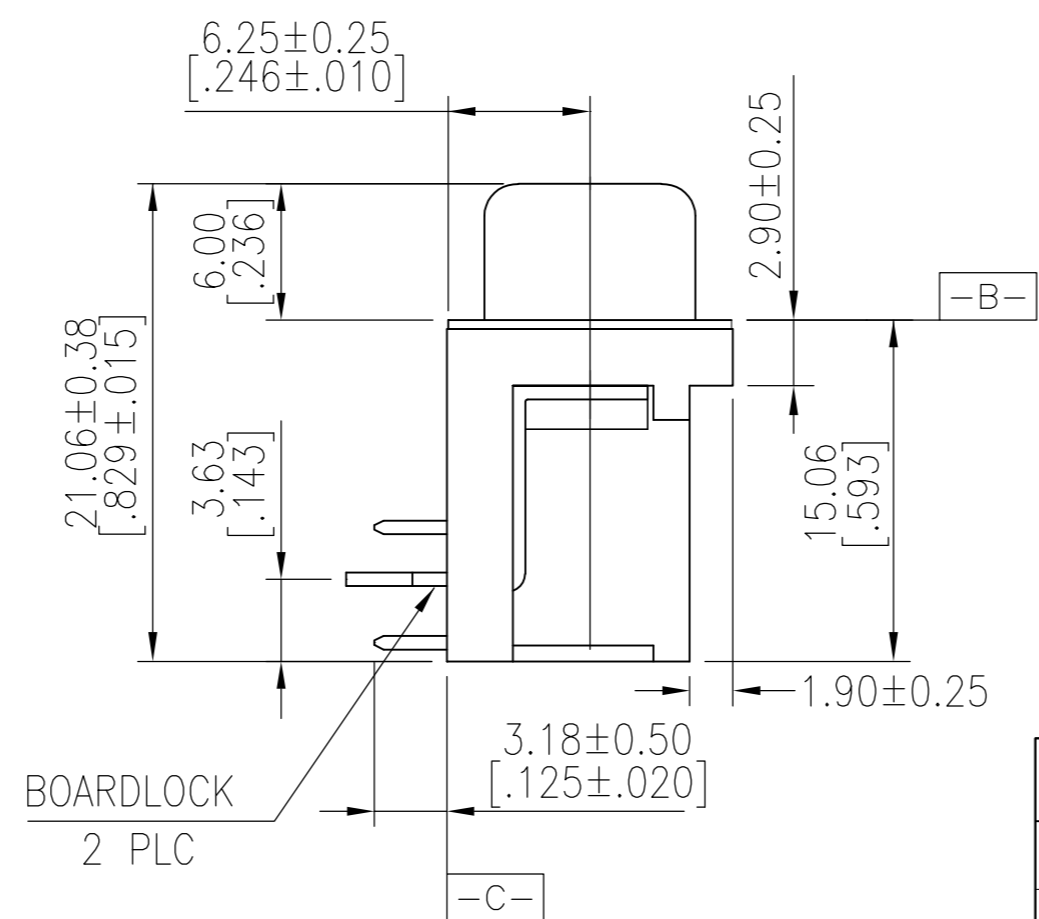


THIS DRAWING IS UNPUBLISHED. RELEASED FOR PUBLICATION
 © COPYRIGHT - By - ALL RIGHTS RESERVED.

REVISIONS					
P	LTR	DESCRIPTION	DATE	DWN	APVD
E		REVISED PER ECO-15-011151	24JUN2016	AP	DG



RECOMMENDED PCB LAYOUT



1. HOUSING MATERIAL: PBT, GLASS FILLED, BLACK, UL 94V-0 RATED.
2. CONTACT MATERIAL: BRASS.
3. CONTACT FINISH: GOLD PLATE IN MATING AREA (SEE TABLE), 120μ" MIN TIN PLATE ON SOLDER TAIL, BOTH OVER 50μ" MIN NICKEL UNDERPLATE.
4. SHELL: STEEL, NICKEL PLATE.
5. BOARDLOCK: BRASS, 100μ" MIN TIN PLATE.
6. THREADED INSERTS: BRASS, NICKEL PLATE.

$\triangle 7$ FOUR DIGIT DATE CODE IN THIS FORMAT.

Year 01 45 Manufacturing Week

$\triangle 8$ DATUMS $-X-$ & $-Y-$ TO BE ESTABLISHED BY CUSTOMER.

OBSOLETE	Gold Flash	5749767-3
OBSOLETE	15μ" MIN	5749767-2
	30μ" MIN	5749767-1
	CONTACT MATING AREA FINISH	PART NUMBER

THIS DRAWING IS A CONTROLLED DOCUMENT.		DWN J.GERACE 22FEB06	TE Connectivity	
DIMENSIONS: mm [INCHES]		CHK S.BOLASH 22FEB06	NAME	
TOLERANCES UNLESS OTHERWISE SPECIFIED:		APVD M.WALMSLEY 22FEB06	AMPLIMITE HD-22 15 POS PLUG, RIGHT ANGLE	
0 PLC ± -		PRODUCT SPEC 108-1092	SIZE A2	CAGE CODE 00779
1 PLC ± 0.38 [.015]		APPLICATION SPEC 114-13198	DRAWING NO C=5749767	RESTRICTED TO -
2 PLC ± 0.25 [.010]		WEIGHT 0	SCALE 3:1	SHEET 1 of 1
3 PLC ± 0.15 [.006]		CUSTOMER DRAWING	REV E	
4 PLC ± -				
ANGLES ± 2°				
FINISH				
SEE NOTES				