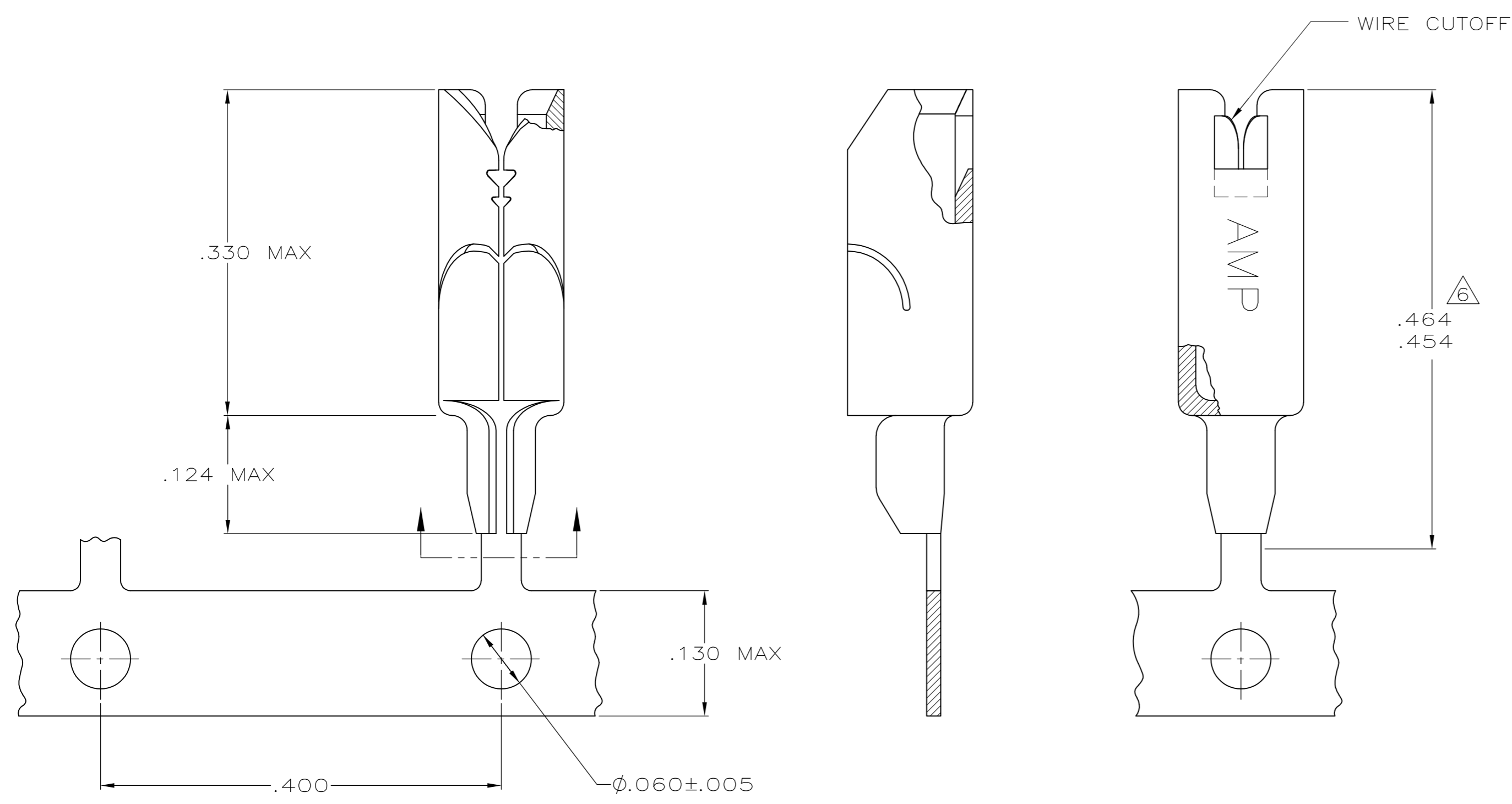
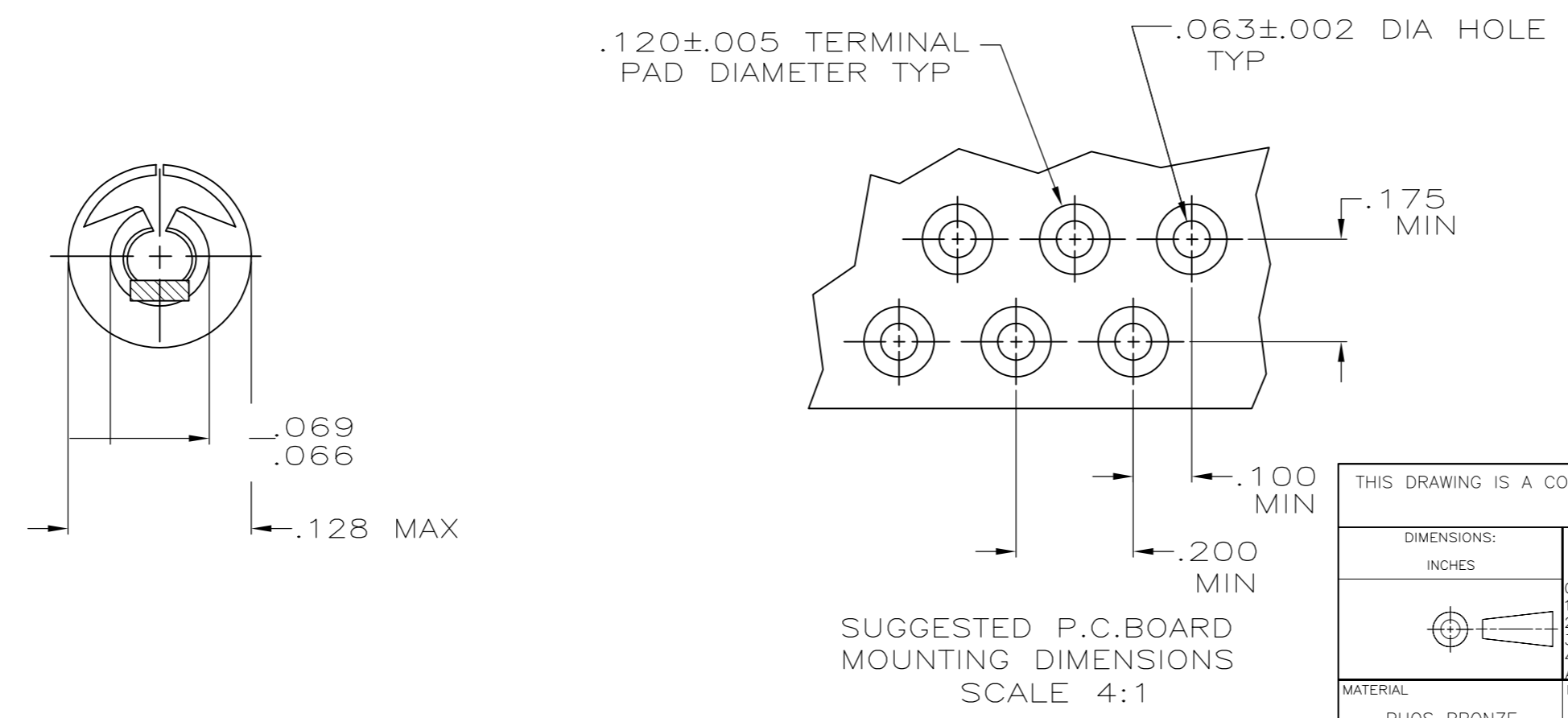


LOC	DIST	REVISIONS			
P	LTR	DESCRIPTION	DATE	DWN	APVD
AA	27	B	REL PER ECR-17-004131	20JUN17	ST TD

D
C
B
A



- 1 FOR USE IN PRINTED CIRCUIT BOARDS .062/.094 THICK.
- 2 WIRE RANGE : 22-26 AWG SOLID OR STRANDED WIRE. MAXIMUM INSULATION DIA OF .086 IS ACCEPTABLE FOR MOST APPLICATIONS.
- 3 TERMINAL SHALL ACCOMMODATE ONE OR TWO WIRES OF THE SAME TYPE AND WITHIN PLUS OR MINUS ONE WIRE GAGE SIZE. EXAMPLE: 24 AWG MAY BE MIXED WITH EITHER 26 OR 22 AWG.
- 4 USE INSERTION TOOL, P/N 231890-1.
- 5 WHEN USING TEFLON INSULATED WIRES USE 1217675-1.
- 6 CUT-OFF DIMENSION FOR LOOSE PIECE PARTS ONLY.
- 7 ONE LOOSE END STYLE SPLICE ALLOWED PER REEL.
- 8 PREPRODUCTION - FASR REQ.



OBSOLETE	230549-1	STRIP MOUNTED	AS SHOWN	1217675-1
NOTE	TERMINAL INSERTION TOOL	DESCRIPTION	PART NO.	
THIS DRAWING IS A CONTROLLED DOCUMENT.				
DWN: JR RUTH 10JUL01		AMP Incorporated Harrisburg, PA 17105-3608		
CHK: MS FEHER 10JUL01		AMP Incorporated Harrisburg, PA 17105-3608		
APVD: E HOWARD 10JUL01		AMP Incorporated Harrisburg, PA 17105-3608		
PRODUCT SPEC		TERMINAL, .125 DIA WITH CUTOFF, AMP BARREL		
APPLICATION SPEC		TERMINAL, .125 DIA WITH CUTOFF, AMP BARREL		
MATERIAL: PHOS BRONZE		FINISH: PRE-TINNED		
DIMENSIONS: INCHES		TOLERANCES UNLESS OTHERWISE SPECIFIED:		
0 PLC ±-		1 PLC ±-		
1 PLC ±-		2 PLC ±-		
2 PLC ±-		3 PLC ±-		
3 PLC ±-		4 PLC ±-		
4 PLC ±-		ANGLES ±-		
MATERIAL: PHOS BRONZE		FINISH: PRE-TINNED		
WEIGHT		SCALE 10:1		
CUSTOMER DRAWING		SHEET 1 OF 1 REV B		

1217675
B