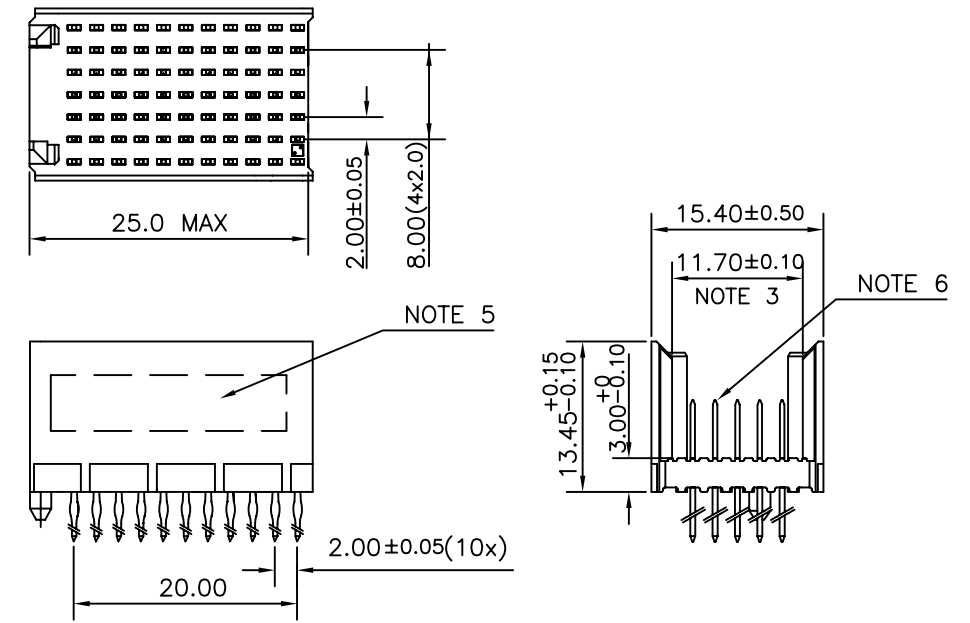


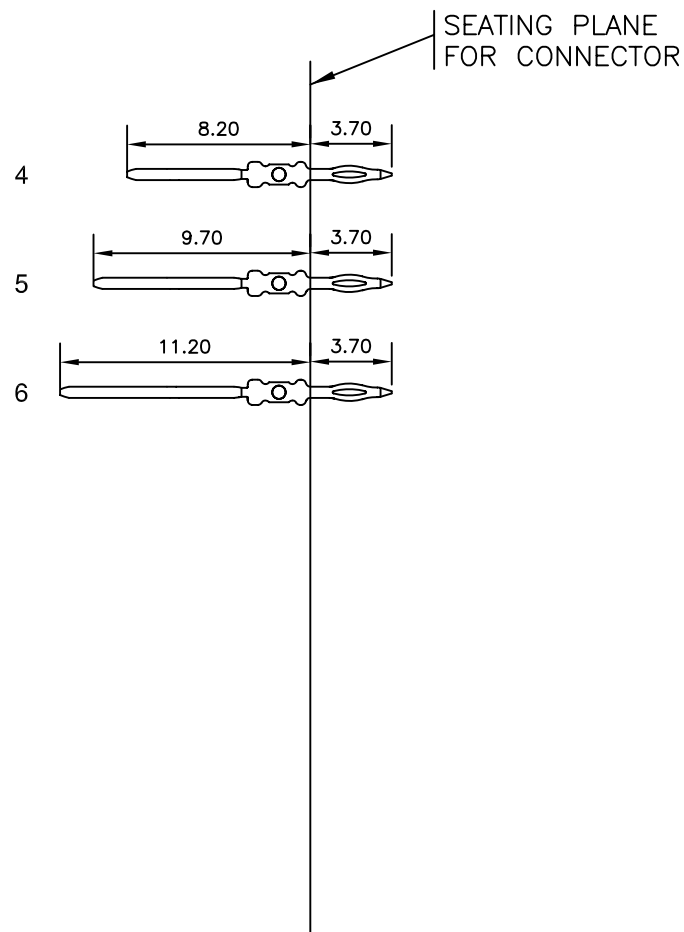
LOADING PATTERN MATING SIDE

f	0	0	0	0	0	0	0	0	0	0
e	4	4	4	6	5	6	4	4	4	4
d	4	4	6	4	6	4	4	4	4	4
c	4	4	5	5	5	6	5	5	5	4
b	4	4	6	4	6	5	6	5	6	4
a	4	4	5	5	5	4	5	4	5	4
z	0	0	0	0	0	0	0	0	0	0
POS	0	1	0	5	0	1	0	0	0	0

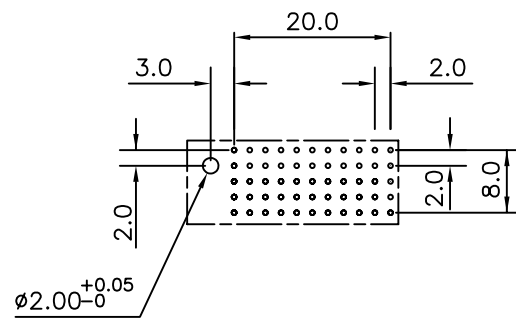
LOADED CONNECTOR ASSEMBLY
(FOR EXAMPLE)



CONTACT OVERVIEW



LAY-OUT P.C.B.-HOLE



HM2P80PDL3F0 LEAD FREE INDICATOR : LF = LEAD FREE (DIGIT 15 & 16)

PLATING CODE (DIGIT 13 AND 14) (REF DRW NO. BS,C , 201844 , 003)

NOTES

1. THIS PRODUCT IS CSA APPROVED.
2. THIS PRODUCT IS UL RECOGNIZED.
3. MEASURED AT THE BOTTOM.
4. MATERIAL CONTACT: PHOSPHORBRONZE
HOUSING: CREAM WHITE GLASS FILLED POLYESTER UL-94V0
5. CONNECTOR PRINTED WITH P/N AND DATE CODE.
6. FOR ACTUAL CONTACT LOADINGS, SEE LOADING PATTERN MATING SIDE.
7. SHAPE OF CONNECTOR HOUSING CAN ALTER DEPENDING ON PRODUCTION LOCATION
8. THE PRODUCT (LF) MEETS EUROPEAN UNION DIRECTIVES AND OTHER COUNTRY REGULATIONS AS DESCRIBED IN GS-22-008
9. FOR RECOMMENDED PTH DIMENSIONS REFER DRAWING : BS, A , 201572 , 001

CATALOG NO: HM2P80PDL3F0-----

mat'l. code SEE NOTE 4		surface ISO 1302 ✓	tolerance ISO 406 ISO 1101	projection 	product family MILLIPACS
ltr	ecn no	dr	date	title	
A	108-0155	MINI	2008-11-11	MPACS 5+2R STR HDR PF CONN TYPE CR 11 POS.	
			tolerances unless otherwise specified	MM	scale -
			angles		
			linear		
			0°±1°		
		dr	MINI K VANDANATH	2008-11-11	dwg no
		enr	ALEX BABU	2008-11-11	sheet 1 of 1
		chr	ALEX BABU	2008-11-11	size
		appd	ALEX BABU	2008-11-11	A3
sheet index		revision	A	type Product Customer Drawing	
1		sheet	1		