

AV series

Snap action security pushbutton switches •
 Ø 16 mm • momentary (NO)



DISTINCTIVE FEATURES

- Momentary (NO)
- Compact
- Long life
- Marking available



ENVIRONMENTAL SPECIFICATIONS

- Optional front panel sealing : IP65 according to IEC 60529
- Operating temperature : -30 °C to +70 °C (-22 °F to +158 °F)



ELECTRICAL SPECIFICATIONS

- Max. current/voltage rating with resistive load :
200 mA 48 VDC - 100 mA 48 VDC
- Initial contact resistance : 50 mΩ max.
- Insulation resistance : 1,000 MΩ min. at 500 VDC
- Dielectric strength : 2,000 Vrms 50 Hz min.
between terminals and frame
- Electrical life : 50,000 cycles at 200 mA 48 VDC
100,000 cycles at 100 mA 48 VDC



GENERAL SPECIFICATIONS

- **Travel** : 1.60 mm (.063) ± 0.3 mm (.011)
- **Torque** : 1.5 Nm min. - 4 Nm max. applied to nut
- **Panel thickness** : 1 (.039) to 6 mm (.236) max.
- **Low level or mechanical life** : 1,000,000 cycles



MATERIALS

- Case : PBT
- Contacts : brass, silver plated (C)
- Bushing and actuator : see next page

The company reserves the right to change specifications without notice.

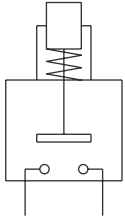


AV series

Snap action security pushbutton switches •
Ø 16 mm • momentary (NO)



ELECTRICAL FUNCTIONS



Function 3 (NO)



MOUNTING

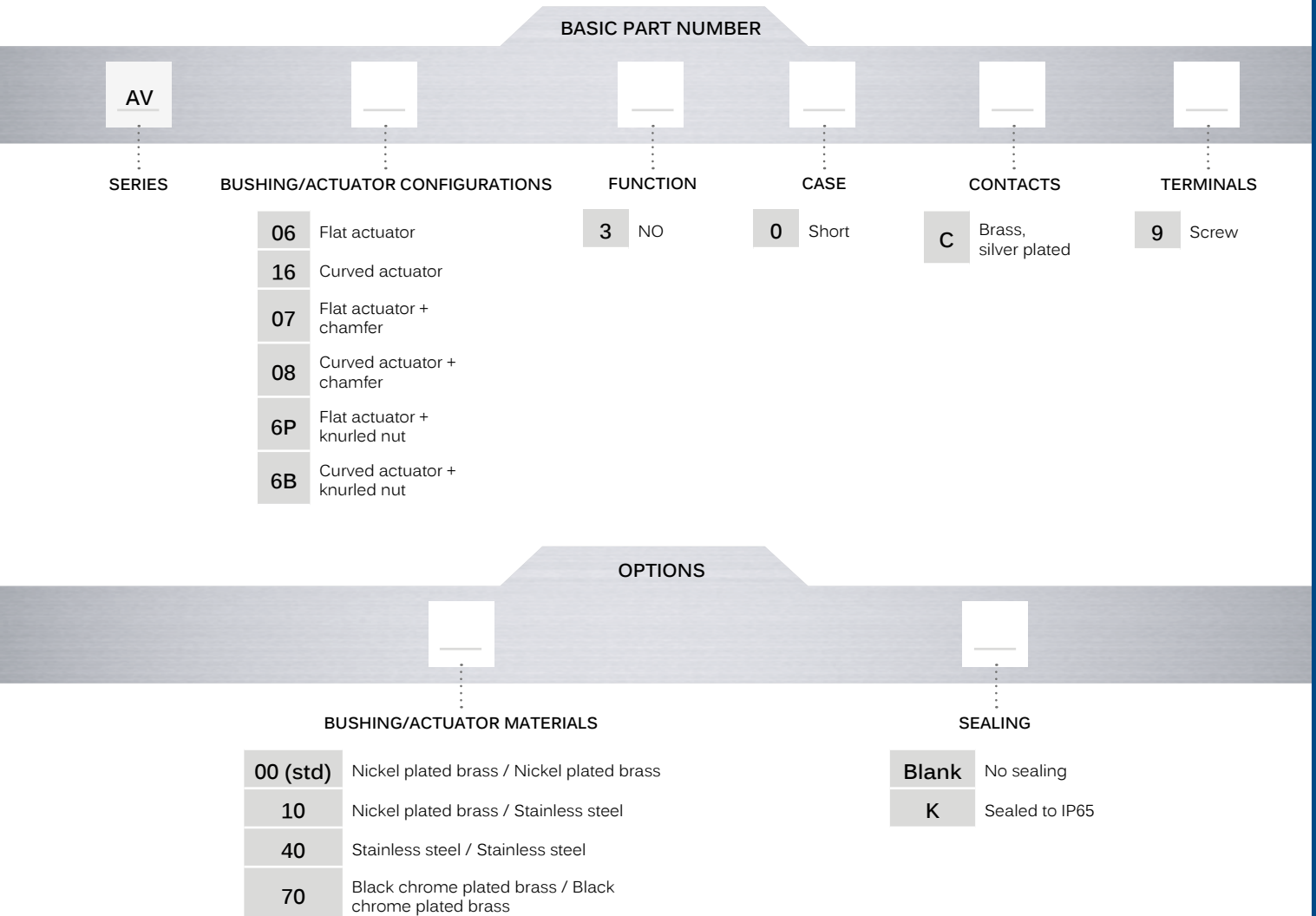
- Panel cut-out : Ø 16.2 mm (.637)
- Min. pitch for matrix mounting :
24 mm x 24 mm (.944 x .944)
(AV6P & AV6B : 20 mm x 20 mm)

AV series

Snap action security pushbutton switches •
 Ø 16 mm • momentary (NO)



BUILD YOUR PART NUMBER



ABOUT THIS SERIES

On the following pages, you will find successively basic part numbers of switches and options in the same order as in above chart

- ⚠ **Notice:** please note that not all combinations of above numbers are available. Refer to the following pages for further information.
- 🔧 **Mounting accessories:** standard hardware supplied : 1 hex nut. Standard and special hardware is presented in the "Hardware" section of website.

AV series

Snap action security pushbutton switches • Ø 16 mm • momentary (NO)

FLAT OR CURVED ACTUATOR SCREW TERMINALS



Flat actuator
AV0630C9

Curved actuator
AV1630C9

FLAT OR CURVED ACTUATOR WITH CHAMFER



Flat actuator
AV0730C9

Curved actuator
AV0830C9

WITH KNURLED NUT FOR MATRIX MOUNTING 20 X 20 (.787X.787)

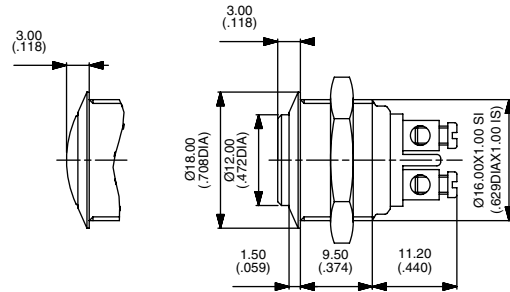


Flat actuator
AV6P30C9

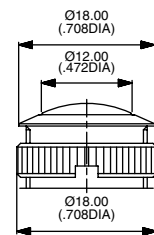
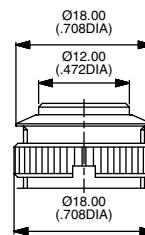
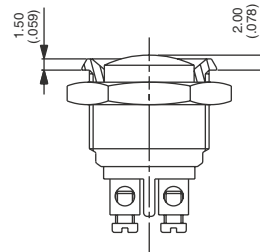
Curved actuator
AV6B30C9

Screw terminals for wires 1,5 mm² max.

Hex nut 19 (.748) across flats



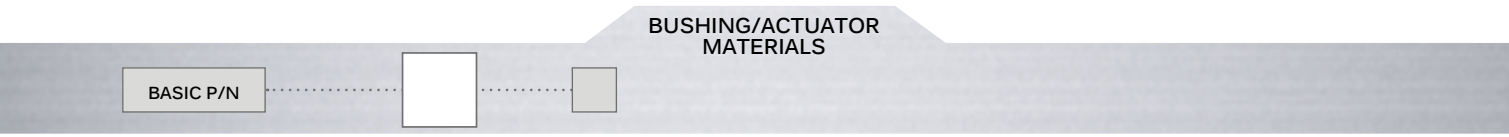
Hex nut 19 (.748) across flats



Wrench available under P/N U1990.

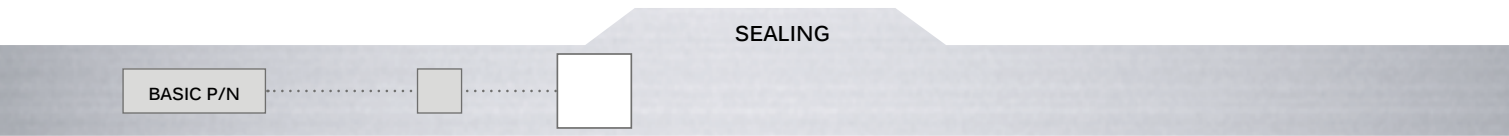
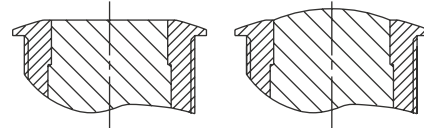
AV series

Snap action security pushbutton switches •
 Ø 16 mm • momentary (NO)



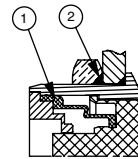
CODE	BUSHING	ACTUATOR
00 (std)	Nickel plated brass	Nickel plated brass
10	Nickel plated brass	Stainless steel
40	Stainless steel	Stainless steel
70	Black chrome plated brass	Black chrome plated brass

FLAT OR CURVED METAL ACTUATOR



- Blank No sealing
- K Front panel sealing to IP65

OPTION K



- ① - elastomeric membrane
- ② - external gasket