

# 28C0236-0BW

STEWARD PART NUMBERING SYSTEM					
MATERIAL TYPE	PRODUCT CODE	PART SIZE CODE	SELECTED DIMENSION CODE	ADDITIONAL DESCRIPTION	PACKAGING CODE
25	C	0236 - 0	0	D	W

Ambient Operating Temperature Range : -55°C to + 125°C

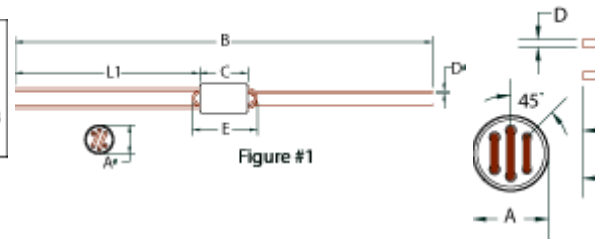


Figure #1

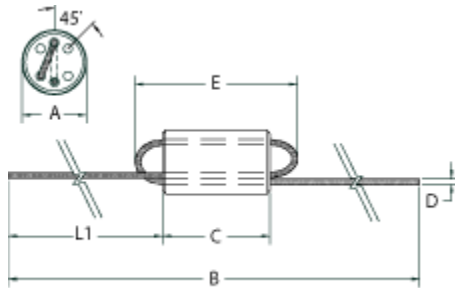


Figure #3

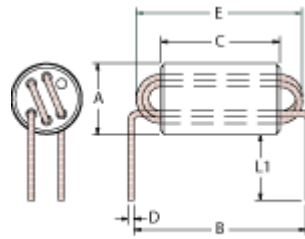


Figure #4

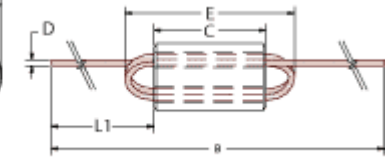


Figure #5

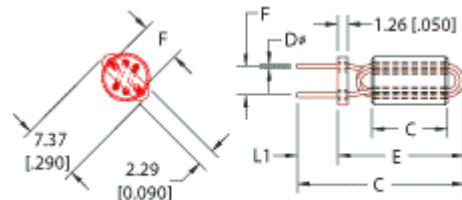


Figure #6

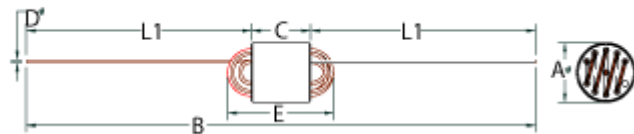


Figure #7

**Drawing Figure #**

Figure Number
5

**Electrical Characteristics**

NET Z @ 100 MHz nom	NET Z @ 300 MHz nom	DCR Max
835	-	-

**Physical Dimensions**

A mm	B mm	C mm	D mm	E mm	F mm	L1 mm	A in	B in	C in	D in	E in	F in	L1 in
5.99	86.46	10.00	0.51	14.61	-	38.10	0.236	3.404	0.394	0.020	0.575	-	1.50

# 28C0236-0BW

Z, R, X<sub>L</sub> vs Frequency

