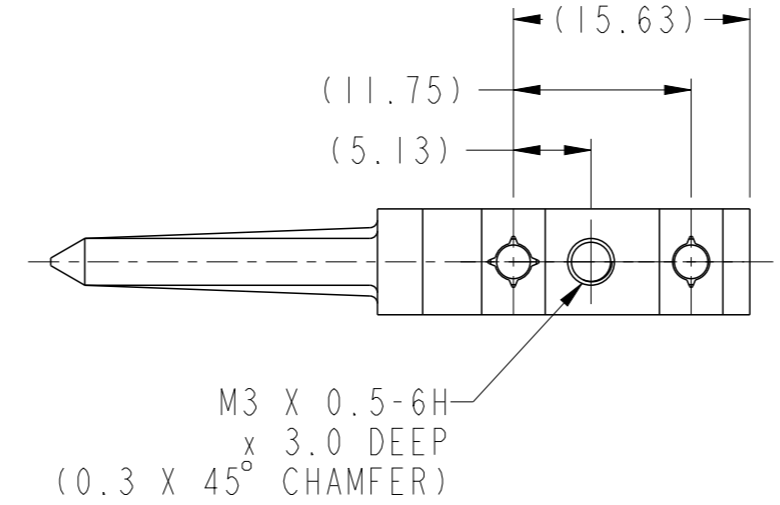
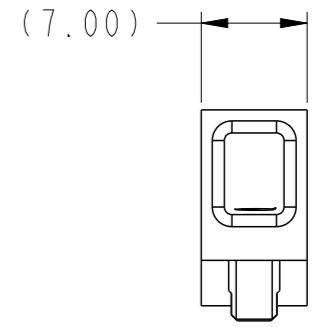
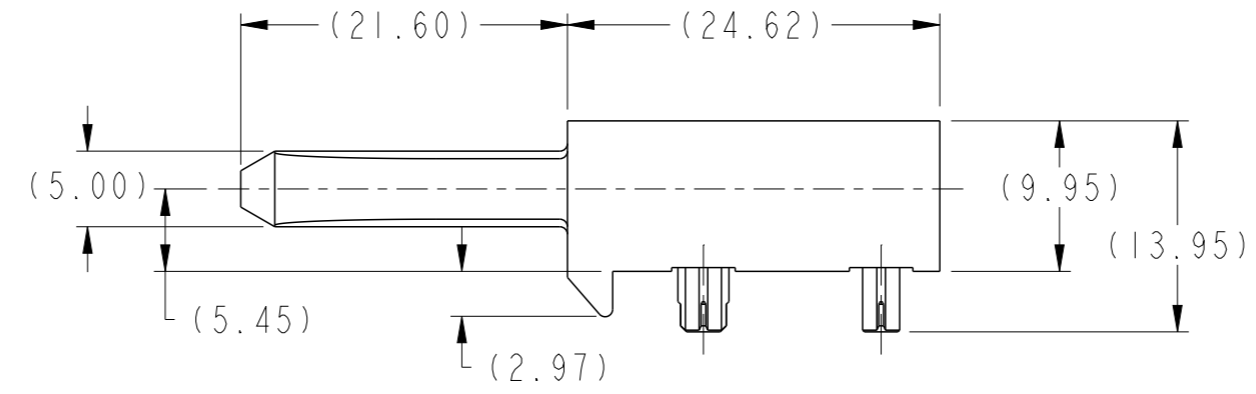
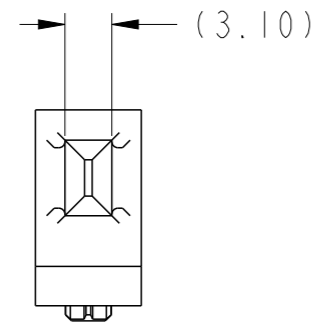


PRODUCT NUMBER  
SEE TABLE, SHEET 2



Amphenol  
FCi

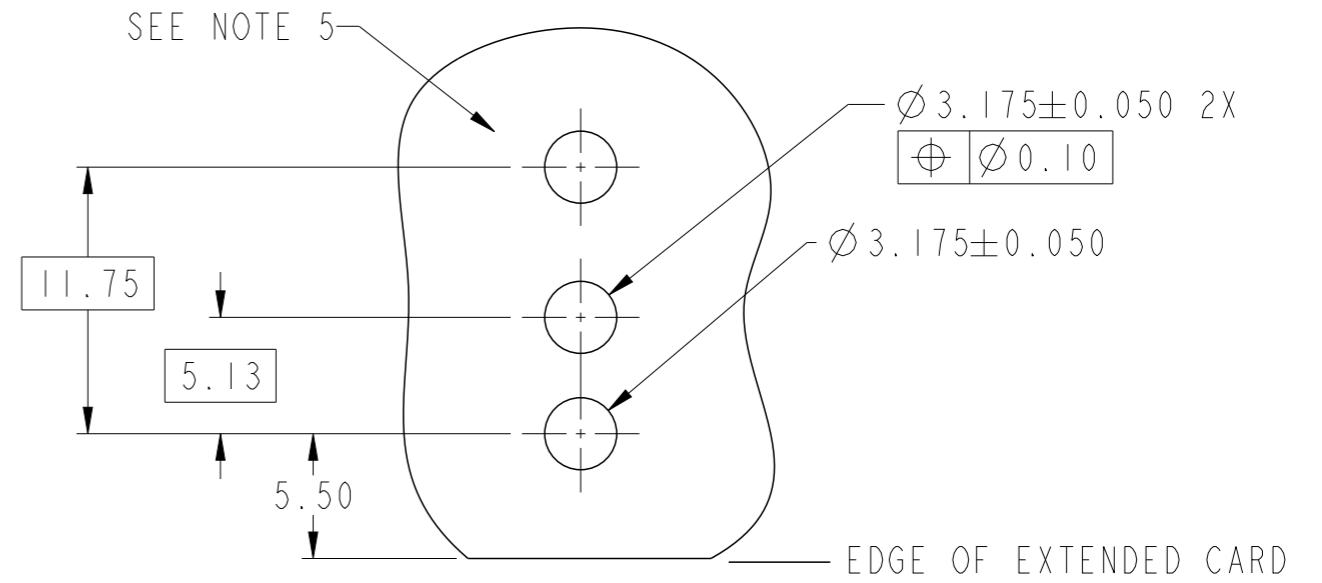
© 2016 AFCI

spec ref		dr	Chen-Hong Tan	2006/08/17	projection	MM	size	A3	scale	2:1	
tolerance std ASME Y14.5		TOLERANCES UNLESS OTHERWISE SPECIFIED			eng	Terry Luo	2019/04/24	ecn no	ELX-DG-33324-1		
		chr			product family		AirMax Accessories		rel level		Released
surface 3.2		linear	0.X	±0.3	Amphenol FCi			7.2mm R/A GUIDE BLADE		dwg no	10045588
			0.XX	±0.10				2/3 PAIR		rev	C
ASME Y14.5		angular	0°	±2°	cat. no.			-		Product - Customer Drw	
					sheet 1 of 2						

Product number  
10045588-101LF

NOTES:

1. MATERIAL: ZINC ALLOY.
2. FINISH: ZINC YELLOW CHROMATE.
3. APPLICATION SPECIFICATION: GS-20-045.
4. REFER TO CUSTOMER DRAWING 10035911 FOR INFORMATION REGARDING PCB LAYOUT OF POWER AND GUIDE MODULES RELATIVE TO SIGNAL MODULES.
5. RIGHT ANGLE PIN MODULE HAS THE SAME PCB FOOTPRINT AS RIGHT ANGLE RECEPTACLE MODULE (REF P/N 10045367 SHEET 2).
6. THIS PRODUCT MEETS EUROPEAN DIRECTIVES AND OTHER COUNTRY REGULATIONS AS DESCRIBED IN GS-22-008
7. PACKAGING MEETS GS-14-920 LEAD FREE LABELING SPECIFICATION.



RECOMMENDED PCB LAYOUT  
NOTE 4  
SCALE 3:1

Amphenol  
FCi

© 2016 AFCI

spec ref		dr	Chen-Hong Tan	2006/08/17	projection	MM	size	A3	scale	1:1		
tolerance std		eng	Terry Luo	2019/04/24			ecn no		ELX-DG-33324-1			
ASME Y14.5		chr	-	-			rel level		Released			
-		appr	Heaven Cen	2019/04/25	product family		AirMax Accessories					
surface	3.2	linear	0.X	±0.3	<b>Amphenol FCi</b>		7.2mm R/A GUIDE BLADE 2/3 PAIR		dwg no 10045588		rev	C
			0.XX	±0.10								
			0.XXX	±0.050								
ASME Y14.5		angular	0°	±2°	cat. no.		-		Product - Customer Drw		sheet 2 of 2	