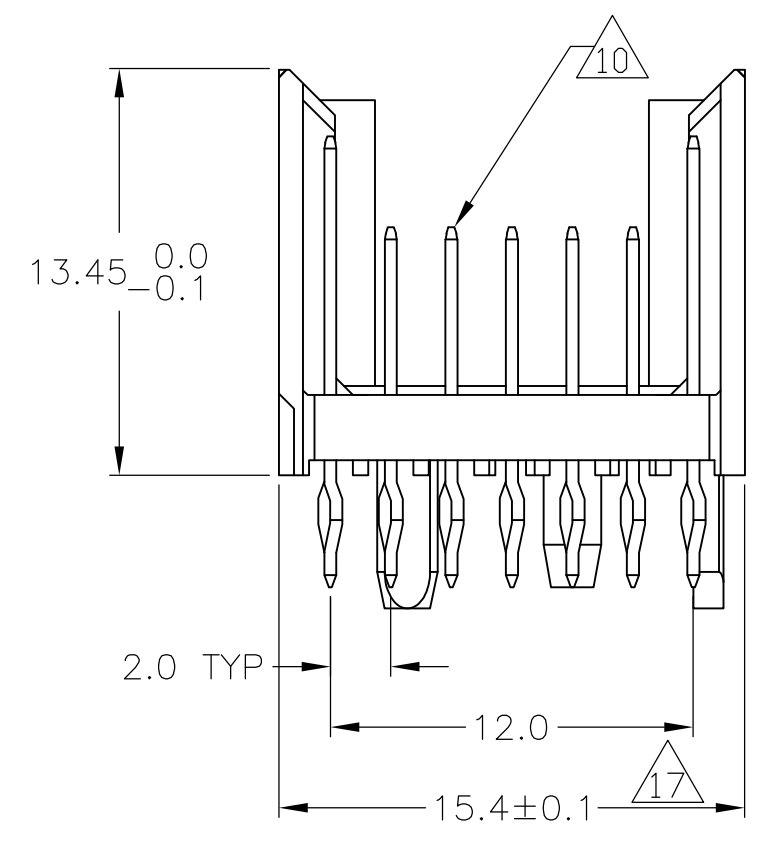
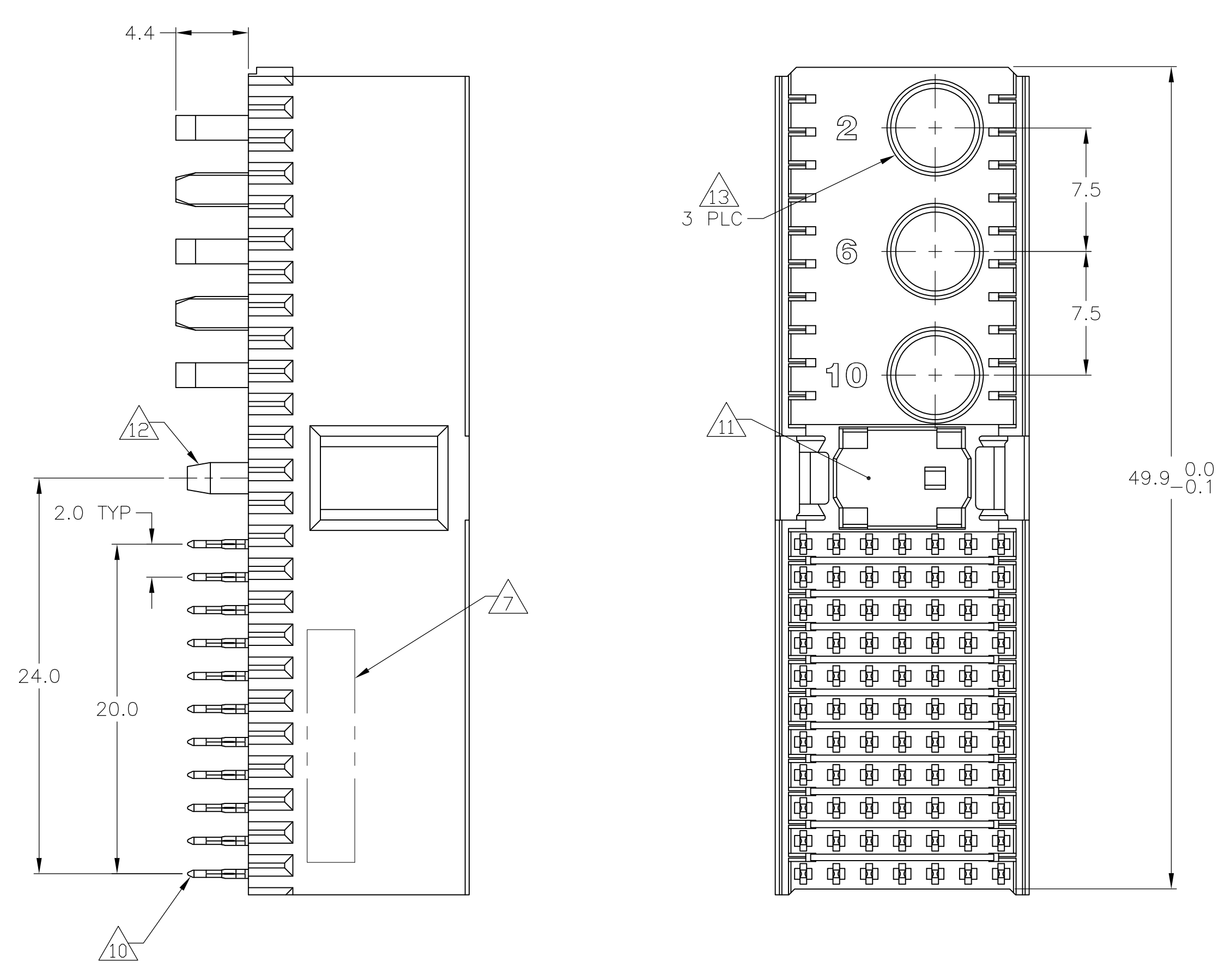
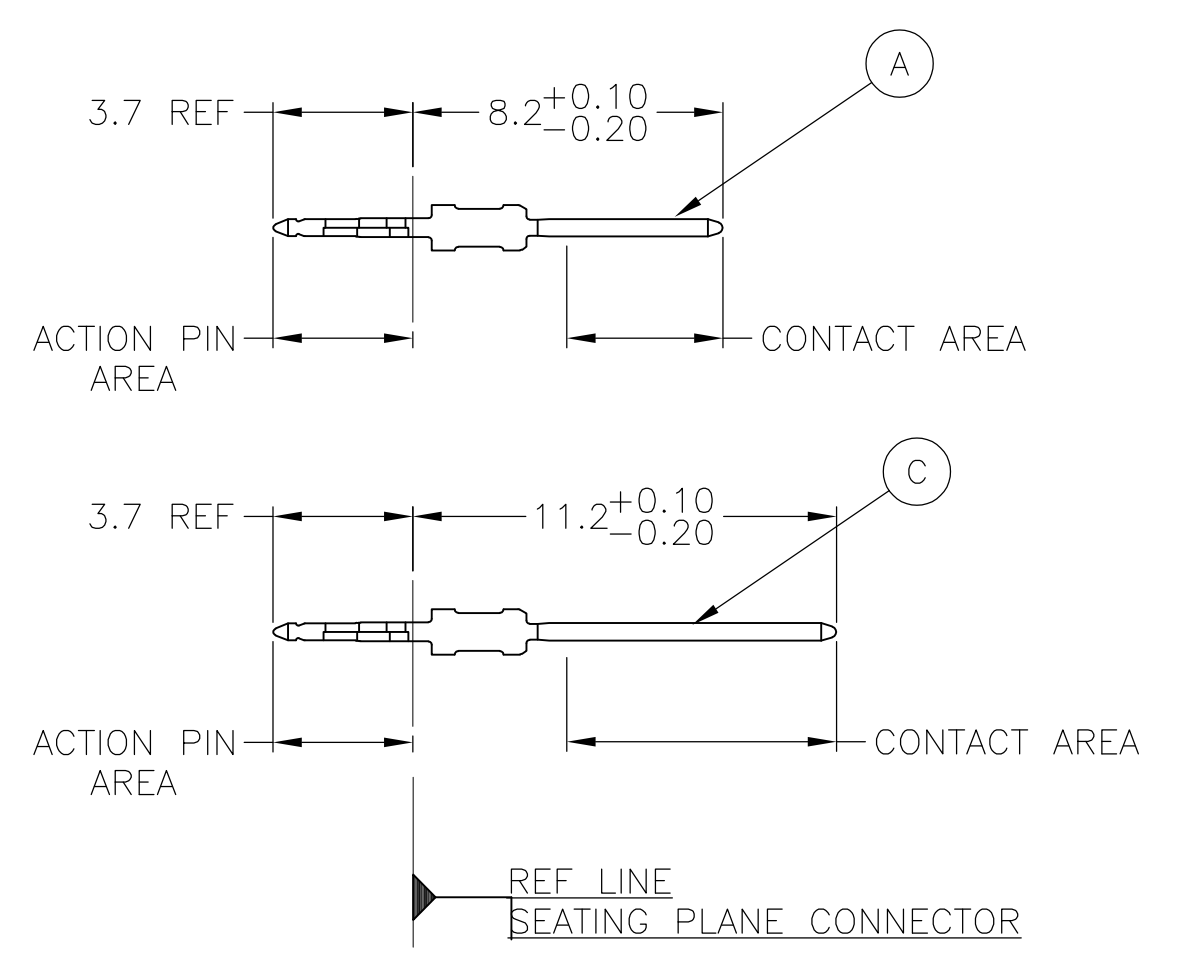


LOC		DIST		REVISIONS			
AD	00	REV	PER	EC	DATE	BY	CHK
A		REV PER EC	0512-0302-05		14DEC05	BC	GS
B		ECR-10-019054			15SEP10	DP	MQW

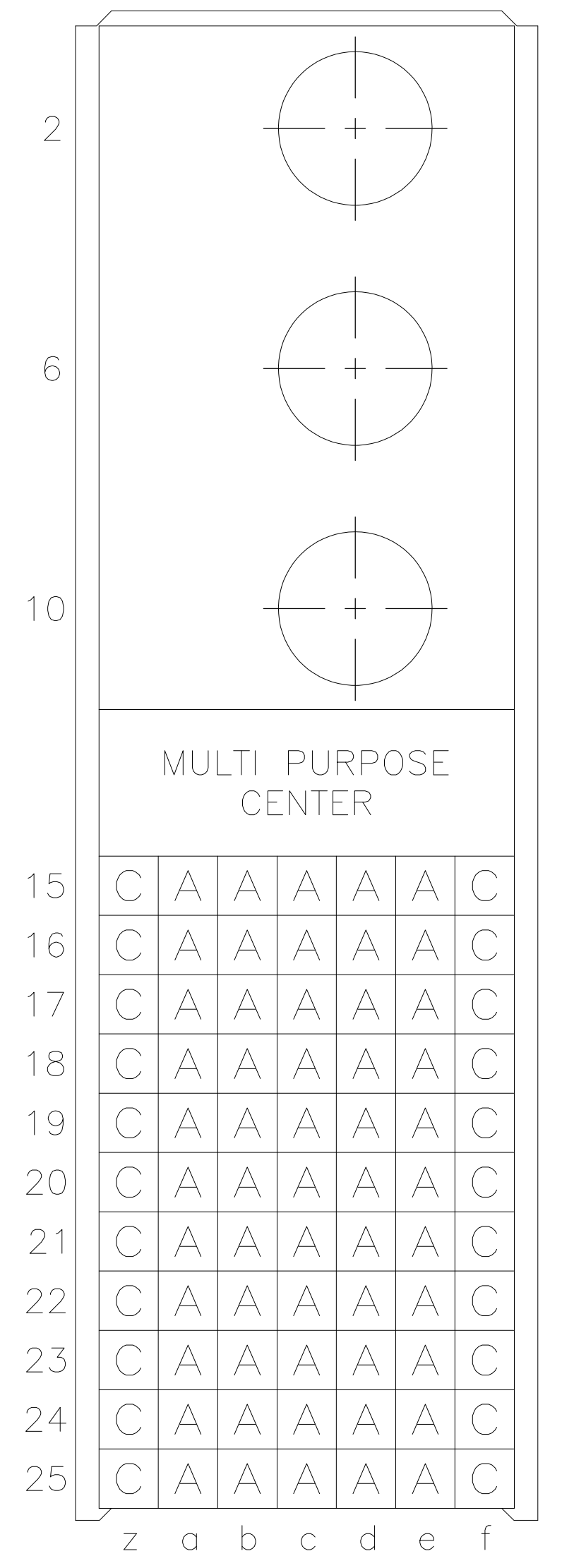
### CONNECTOR ASSEMBLY EXAMPLARY LOADED $\Delta$ 9



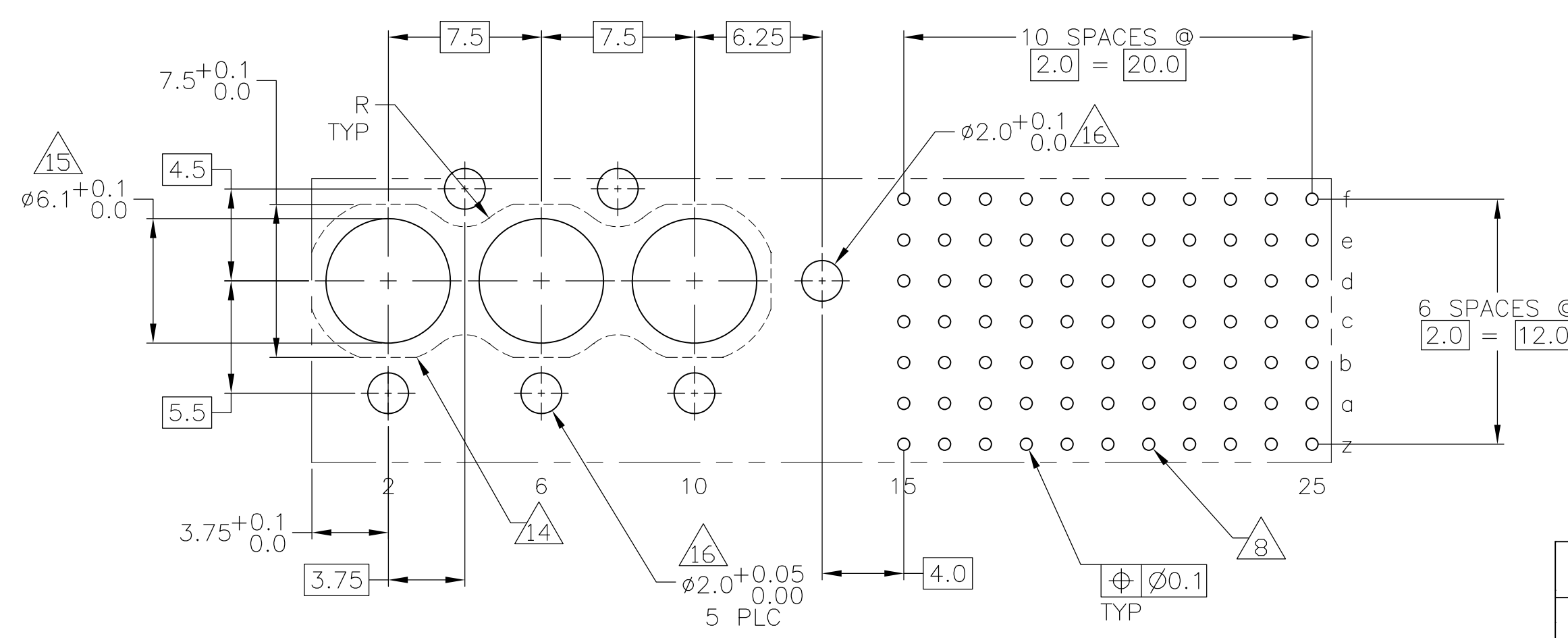
### CONTACT DIMENSIONS SCALE 5:1



### CONTACT LAYOUT



### RECOMMENDED PCB-HOLE LAYOUT COMPONENT SIDE SHOWN



### PLATED THRU HOLES PARAMETERS REFERENCE APPLICATION SPECIFICATION

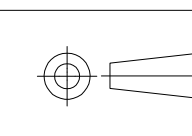
$\Delta$ 2	$\Delta$ 6	$\Delta$ 18	1-5352049-9
$\Delta$ 2	$\Delta$ 5	$\Delta$ 18	5352049-9
$\Delta$ 2	$\Delta$ 4	$\Delta$ 4	5352049-4
$\Delta$ 2	$\Delta$ 3	$\Delta$ 3	5352049-1
FINISH		PART NUMBER	

THIS DRAWING IS A CONTROLLED DOCUMENT.

DIMENSIONS: mm	TOLERANCES UNLESS OTHERWISE SPECIFIED:	DIN B CARBO 15JUL05	15JUL05	Tyco Electronics Corporation Harrisburg, Pa 17105-3608
$\phi$	0-PLC ±	APVD G SKIPPER 15JUL05	NAME	MALE ASSEMBLY, Z-PACK 2mm HM, TYPE M
$\phi$	1-PLC ±	PRODUCT SPEC	108-19082	
$\phi$	2-PLC ± 0.2	APPLICATION SPEC	114-19029	
$\phi$	3-PLC ± 0.005	WEIGHT	A1 00779	SCALE 4:1 SHEET 1 OF 2 REV B
$\phi$	4-PLC ± 0.005	CUSTOMER DRAWING	5352049	
$\phi$	5-PLC ± 0.30			

LOC		DIST		REVISIONS				
P	LTR	DESCRIPTION	DATE	DN	APVD			
AD	00	SEE SHEET 1						

- 1 MATERIAL:  
CONTACT: PHOSPHOR BRONZE.  
HOUSING: GLASS-FILLED POLYESTER.
- 2 GENERAL PLATING SPECIFICATION: UNDERPLATING  
(ENTIRE CONTACT): 1.27µm MIN NICKEL AND ACTION  
PIN: 0.5µm MIN TIN.  
FOR PLATING OF MATING SURFACES SEE APPLICABLE  
SPECIFICATION REFERENCE FOR EACH DASH NUMBER.
- 3 CONFORMS TO ALL TESTING ACCORDING TO IEC 61076-4-101  
PERFORMANCE LEVEL 2.
- 4 CONFORMS TO ALL TESTING ACCORDING TO IEC 61076-4-101  
PERFORMANCE LEVEL 1.
- 5 CONNECTOR TESTED AND QUALIFIED AGAINST TELCORDIA GR-1217-CORE QUALITY LEVEL 3,  
CENTRAL OFFICE APPLICATIONS.
- 6 CONNECTOR TESTED AND QUALIFIED AGAINST TELCORDIA GR-1217-CORE QUALITY LEVEL 3,  
UNCONTROLLED ENVIROMENT APPLICATIONS.
- 7 CONNECTOR MARKED WITH PART NUMBER AND DATE CODE.  
ADDITIONAL CHARACTERS OR MARKINGS, AS WELL AS THE LOCATION  
OF THE MARKINGS, MAY BE ADDED FOR TRACEABILITY BASED UPON  
MANUFACTURERS DISCRETION.
- 8 PLATED-THROUGH HOLES AT 2x2mm SQUARE GRID  
PATTERN DEFINED BY CONTACT LAYOUT.
- 9 FOR ACTUAL PIN LOADING SEE "CONTACT LAYOUT".
- 10 FOR ACTUAL PIN DIMENSIONS SEE "CONTACT DIMENSIONS".
- 11 AREA RESERVED FOR KEYING PART (BASIC P/N 100525).
- 12 POLARIZATION FEATURE.
- 13 CONTACT CAVITIES SUITABLE FOR ø4.8 HIGH CURRENT, HIGH FREQUENCY OR  
FIBRE OPTIC CONTACTS AS PER DIN 41626 (SEE ALSO NOTE 14 AND 15).
- 14 PATERN FOR FIBRE OPTIC CONTACTS.
- 15 NOT PLATED THROUGH HOLES. TO BE REPLACED BY ø5.9<sup>+0.1</sup><sub>0.0</sub> PLATED THOUGH  
HOLES IF STRAIGHT SOLDER CONTACTS ARE APPLIED.
- 16 NOT PLATED THROUGH HOLES.
- 17 TO BE MEASURED AT BOTTOM OF SHROUD.
- 18 CONNECTOR LUBRICATED WITH TELCORDIA APPROVED LUBRICANT,  
TECHNICAL REFERENCE: TR-NWT-001217 ISSUE 1, SEP 1992.

THIS DRAWING IS A CONTROLLED DOCUMENT.		DIN B CARBO 15JUL05		Tyco Electronics Corporation Harrisburg, Pa 17105-3608	
DIMENSIONS: mm		TOLERANCES UNLESS OTHERWISE SPECIFIED:		APVD G SKIPPER 15JUL05	
		0-PLC ± —		NAME	
		1-PLC ± 0.2 ±0.2		108-19082	
		2-PLC ± 0.02		APPLICATION SPEC	
		3-PLC ± 0.005		114-19029	
		4-PLC ± —		SIZE	
		ANGLES ± — ±90°		CAGE CODE	
MATERIAL SEE SHEET 1		FINISH SEE SHEET 1		DRAWING NO	
		WEIGHT		A1 00779	
		CUSTOMER DRAWING		5352049	
		SCALE		SHEET	
		4:1		2 OF 2	
				REV	
				B	