

REV.	DATE	DESCRIPTION
01	Jul. 05, '18	1st RELEASE

1 2 3 4 5 6 7 8

A

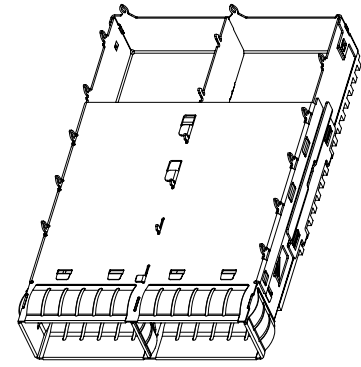
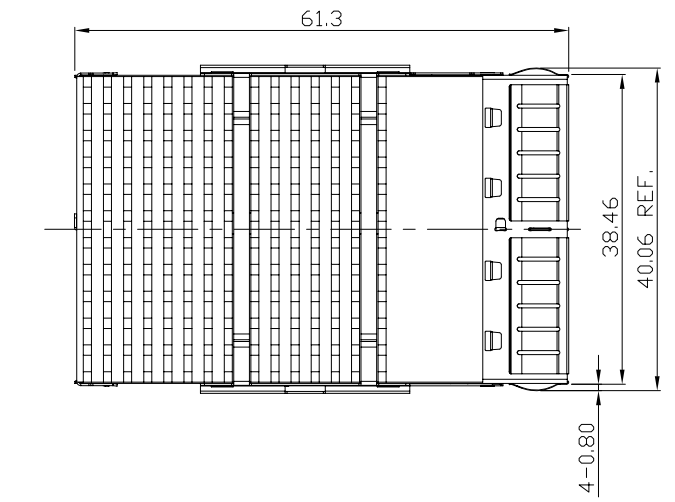
B

C

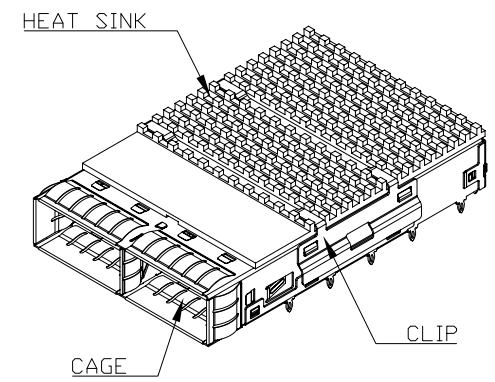
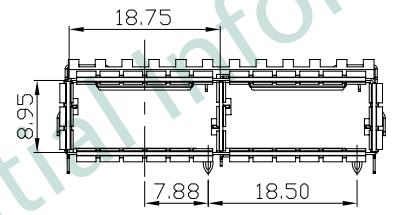
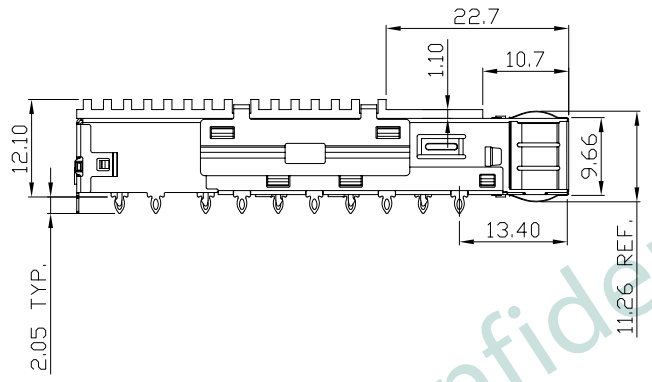
D

E

F



- NOTES:
1. CAGE: COPPER ALLOY
 2. HEAT SINK: ALUMINUM
 3. CLIP: STAINLESS STEEL
 4. UNSPECIFIED TOLERANCE: .XXX ±0.15
.XX ±0.25



KQFP-A-ZPFT-0211

PRODUCT A: CAGE

CATAGORY Z: QSFP 28

TERMINAL / TYPE PF: PRESS FIT

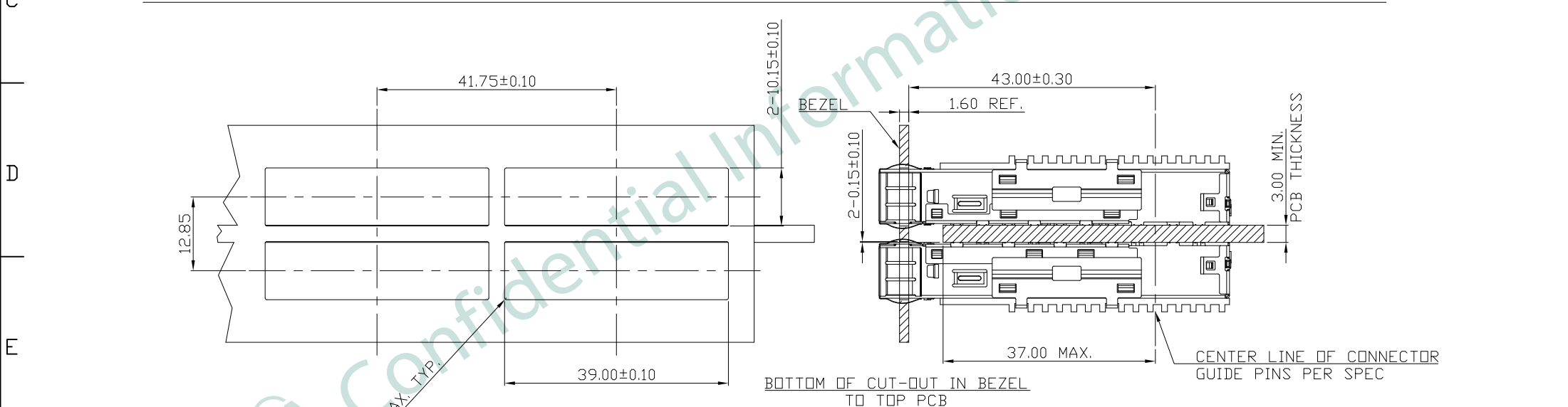
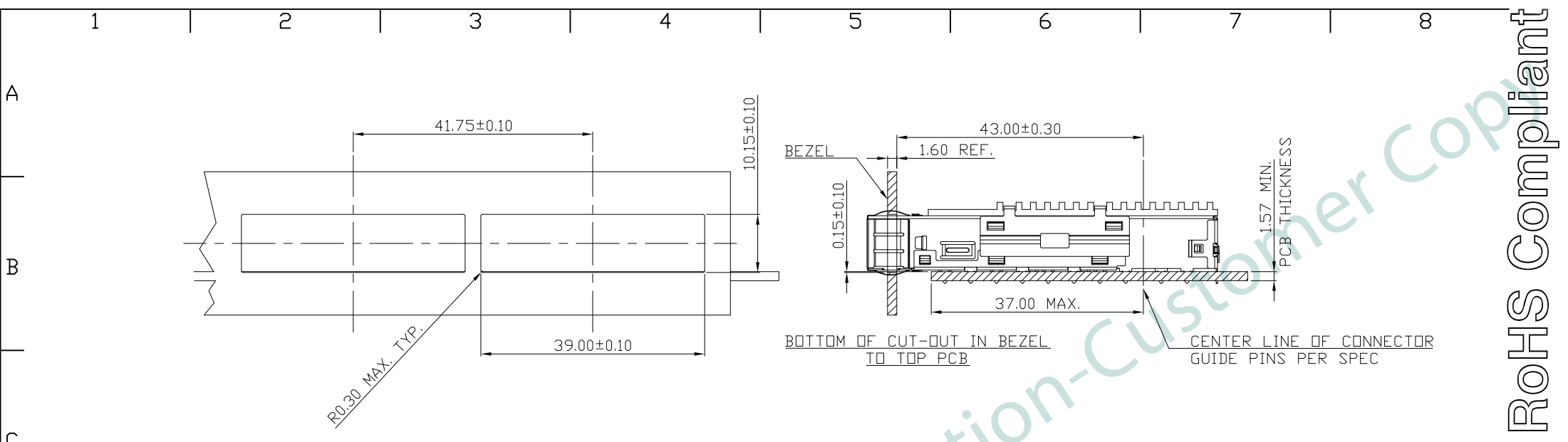
EMI TYPE T: THROUGH BEZEL

SERIAL NUMBER

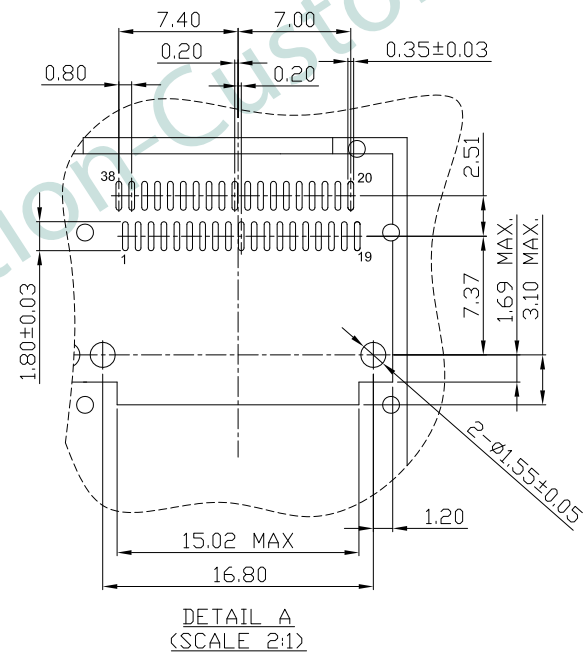
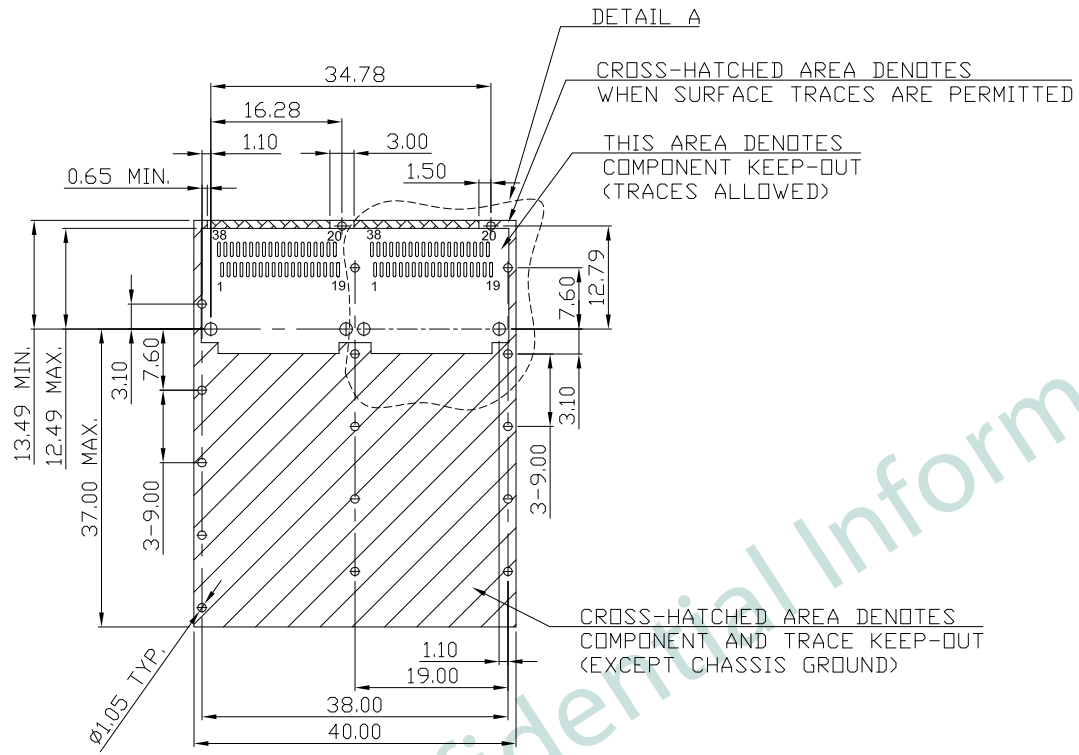
OPTION 1: W/O LIGHT PIPE, W/PCI WEIGHT HEATSINK

NUMBER OF PART

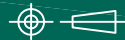
PART NO		KQFP-A-ZPFT-0211		
TITLE	QSFP 28 1X2 CAGE, HEAT SINK, PRESS FIT TYPE			
REV : 01				
UNIT	DRAWN	CHKD	DATE	SHEET
mm[inch]	CINDY	VINCENT	Jul. 05, '18	1 of 4

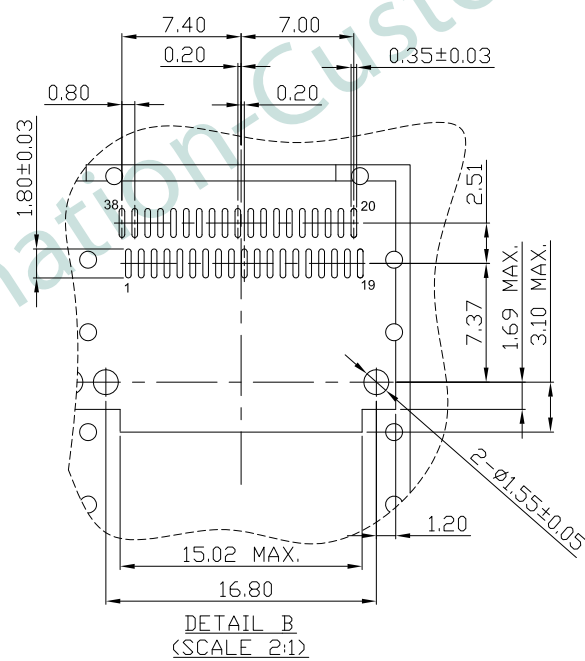
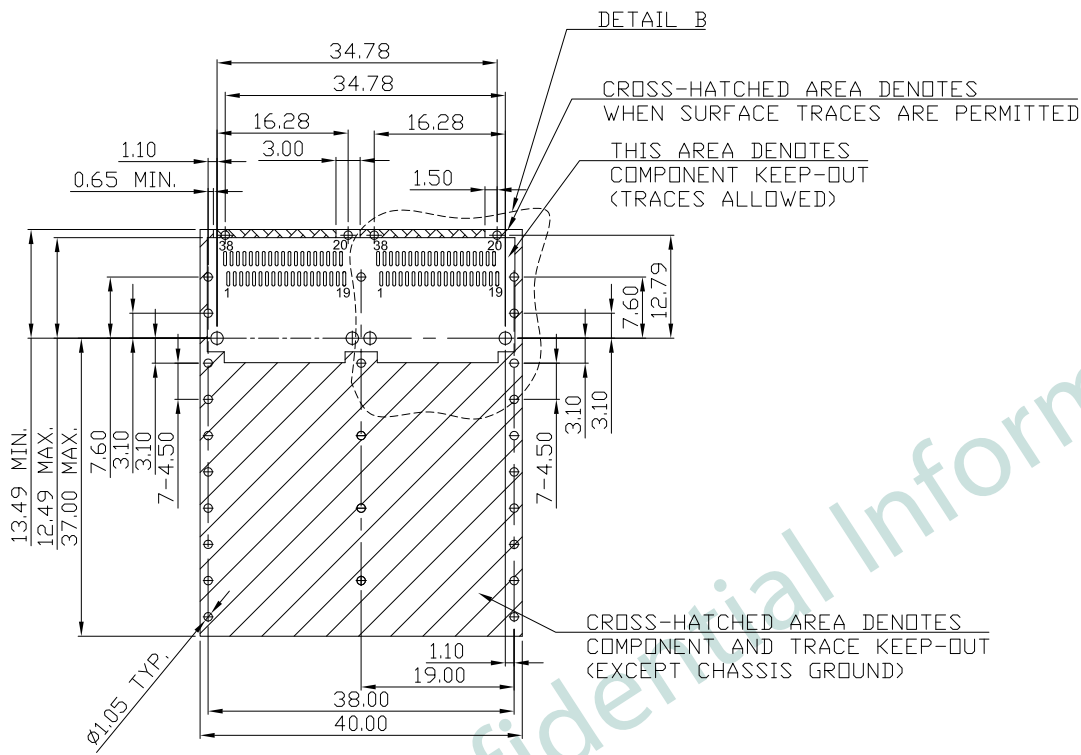


PART NO KQFP-A-ZPFT-0211				
TITLE	QSFP 28 1X2 CAGE, HEAT SINK, PRESS FIT TYPE			
REV : 01				
UNIT	DRAWN	CHKD	DATE	SHEET
mm[inch]	CINDY	VINCENT	Jul. 05, '18	2 of 4

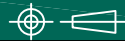


RECOMMENDED PCB LAYOUT (COMPONENT SIDE)
 RECOMMENDED MINIMUM PCB THICKNESS: 1.57mm
 (ALL TOLERANCES ARE ±0.05)
 SINGLE SIDED APPLICATIONS

 PART NO. KQFP-A-ZPFT-0211				
TITLE	QSFP 28 1X2 CAGE, HEAT SINK, PRESS FIT TYPE			
REV : 01				
UNIT	DRAWN	CHKD	DATE	SHEET
mm[inch]	CINDY	VINCENT	Jul. 05, '18	3 of 4



RECOMMENDED PCB LAYOUT (COMPONENT SIDE)
 RECOMMENDED MINIMUM PCB THICKNESS: 3.00mm
 (ALL TOLERANCES ARE ±0.05)
 BELLY TO BELLY APPLICATIONS

 PART NO		KQFP-A-ZPFT-0211		
TITLE		QSFP 28 1X2 CAGE, HEAT SINK, PRESS FIT TYPE		
REV : 01				
UNIT	DRAWN	CHKD	DATE	SHEET
mm[inch]	CINDY	VINCENT	Jul. 05, '18	4 of 4