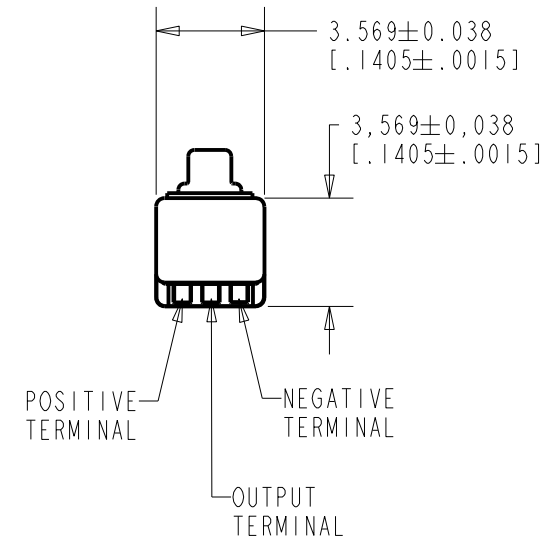
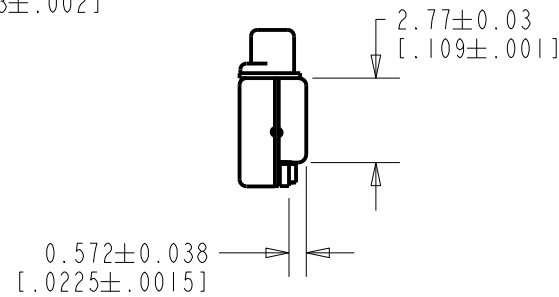
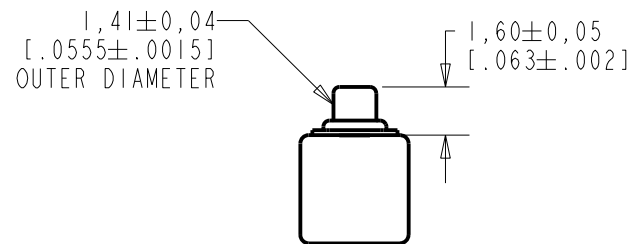
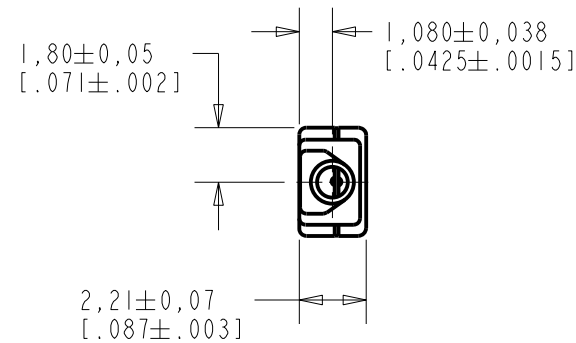


**EM-25346-C36**  
SHT 1.1

NOTE:

1. INCREASED PRESSURE AT SOUND INLET CAUSES A POSITIVE GOING VOLTAGE TO APPEAR AT THE OUTPUT TERMINAL, RELATIVE TO THE NEGATIVE TERMINAL.



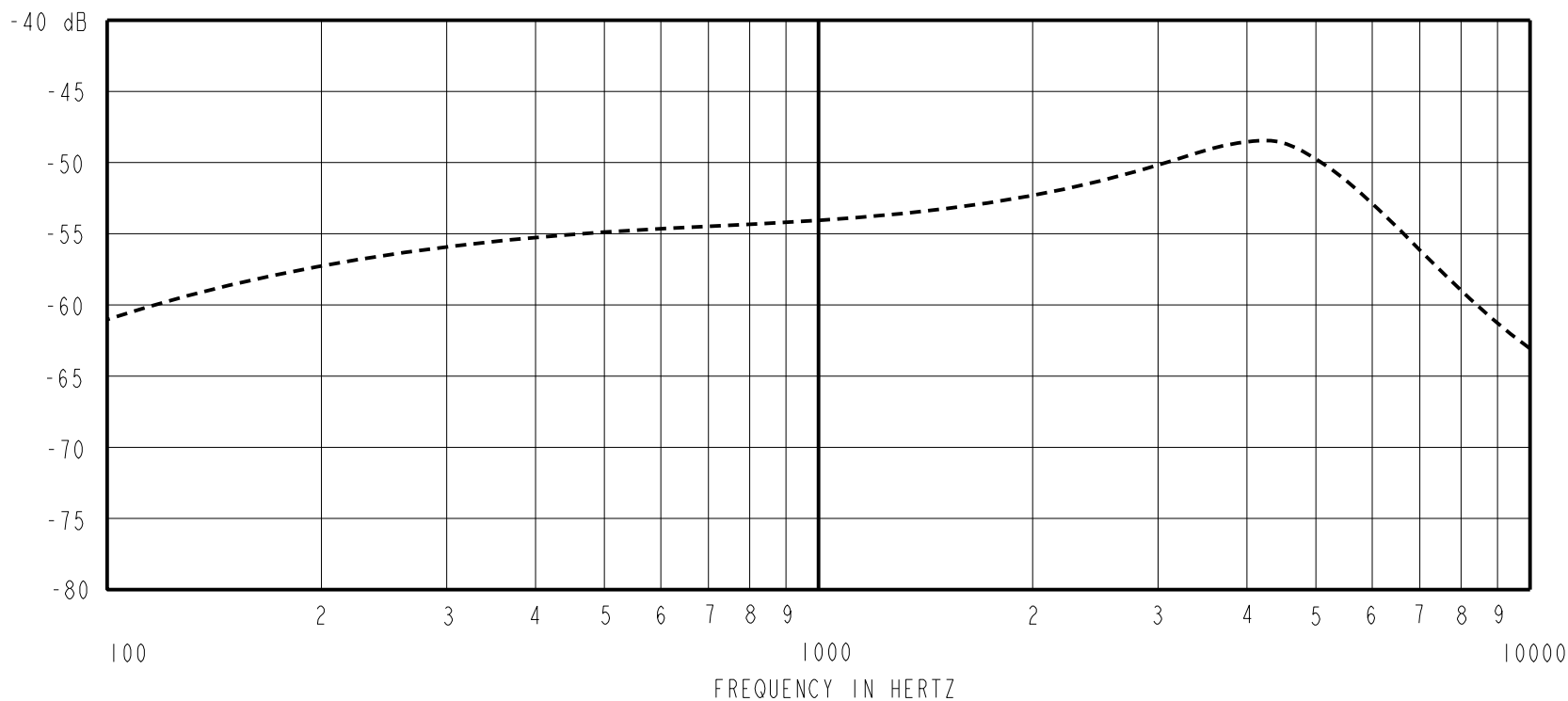
NOMINAL WEIGHT  
.08 GRAM

DIMENSIONS IN MILLIMETERS [INCHES]

**KNOWLES ELECTRONICS**  
ITASCA, ILLINOIS U.S.A.

| Revision                 | C.O. #    | Implementation Date | RELEASE LEVEL | REVISION |
|--------------------------|-----------|---------------------|---------------|----------|
|                          |           |                     | <b>Active</b> | <b>G</b> |
| G                        | MI0105773 | 10-20-14            |               |          |
| SCALE: <b>4:1</b>        |           |                     |               |          |
| TITLE: <b>MICROPHONE</b> |           |                     | DR. BY DATE   |          |
| OUTLINE DRAWING          |           |                     | MMM 12-30-05  |          |
| <b>EM-25346-C36</b>      |           |                     | CK. BY DATE   |          |
| <b>SHT 1.1</b>           |           |                     | GJP 1-2-06    |          |
|                          |           |                     | APP. BY DATE  |          |
|                          |           |                     | GJP 1-2-06    |          |

SENSITIVITY IN dB RELATIVE TO 1.0 VOLT/0.1 Pa (N/M<sup>2</sup>)  
FOR CONDITIONS SHOWN BELOW.



| FREQUENCY | SENSITIVITY |       |       | DEVICE CONFORMITY            |      |
|-----------|-------------|-------|-------|------------------------------|------|
|           | MIN.        | NOM.  | MAX.  | RANGE OF DEVIATION FROM 1KHz |      |
| 100       | ---         | -61.0 | ---   | -10.0                        | -4.0 |
| 1000      | -57.0       | -54.0 | -51.0 | 0.0                          | 0.0  |
| 3500-5500 | ---         | -48.5 | ---   | +2.5                         | +8.5 |
| 6000      | -57.5       | -53.5 | -49.5 | ---                          | ---  |

- NOTES:
1. CASE CONNECTED TO NEGATIVE TERMINAL.
  2. MICROPHONE TO BE FUNCTIONAL WITH 1.6 VDC SUPPLY.
  3. TYPICAL SENSITIVITY TO HUMIDITY AT 1000Hz IS 0.03 dB/%RH
  4. SENSITIVITY AND NOISE VALUES INDICATED ON THIS SPECIFICATION ARE VALID AT 50% HUMIDITY.

| PORT LOCATION | DC SUPPLY | AMPLIFIER CURRENT DRAIN | SENSITIVITY CHANGE ON REDUCING SUPPLY TO 0.9VDC | "A" WEIGHTED NOISE (1 kHz EQUIV. SPL) | OUTPUT IMPEDANCE OHMS |      |      |
|---------------|-----------|-------------------------|---|---------------------------------------|-----------------------|------|------|
|               |           |                         |   |                                       | MIN.                  | NOM. | MAX. |
| 12S           | 1.3V      | 50 µA MAX.              | 3 dB MAX.                                       | 28.0 dB MAX.                          | 2800                  | 4400 | 6800 |

| Revision | C.O. #    | Implementation Date | RELEASE LEVEL | REVISION |
|----------|-----------|---------------------|---------------|----------|
| G        | MI0105773 | 10-20-14            | Active        | G        |

|   |                                |              |
|---|--------------------------------|--------------|
| WHEN TEST LIMITS ARE USED TO ESTABLISH INCOMING INSPECTION ACCEPTANCE/REJECTION CRITERIA, CORRELATION OF TEST EQUIPMENT WITH KNOWLES IS ALSO REQUIRED FOR ELIMINATION OF EQUIPMENT AND TEST METHOD VARIATION<br><br>TITLE: <b>MICROPHONE</b><br>PERFORMANCE SPECIFICATION | <b>EM-25346-C36</b><br>SHT 2.1 | DR. BY DATE  |
|   |                                | MMM 12-30-05 |
|   |                                | CK. BY DATE  |
|   |                                | GJP 1-2-06   |
|   |                                | APP. BY DATE |
|   |                                | GJP 1-2-06   |

**KNOWLES ELECTRONICS**  
ITASCA, ILLINOIS U.S.A.