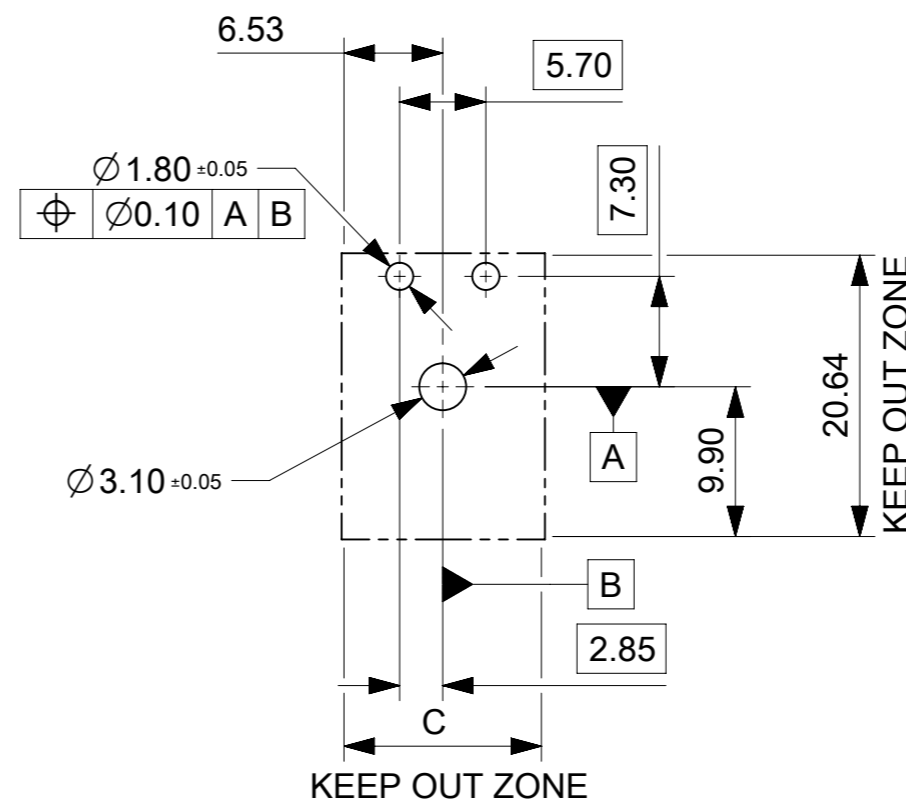
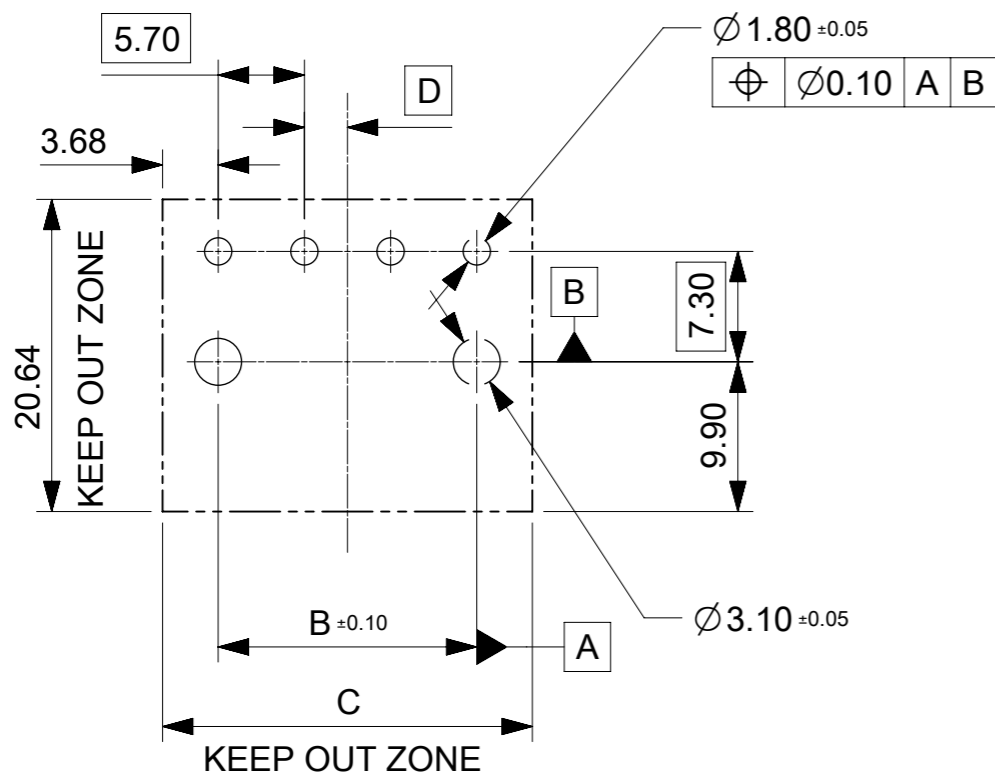
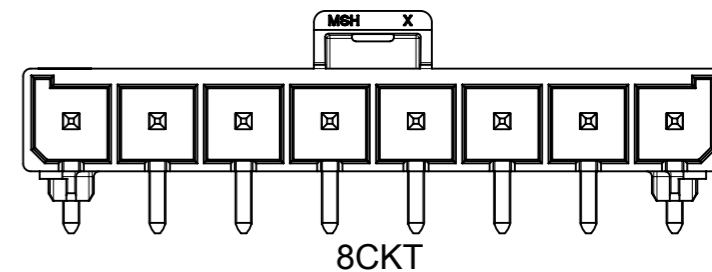
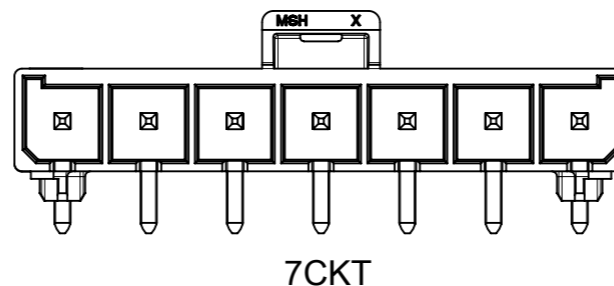
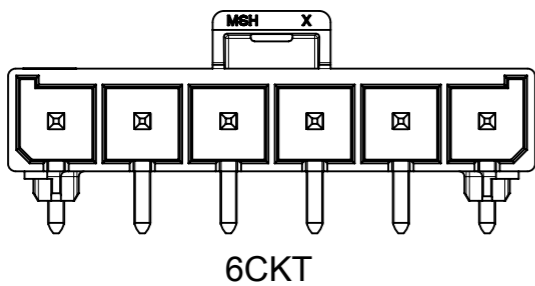
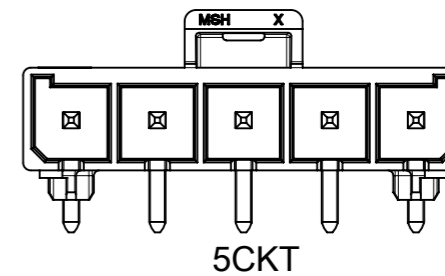
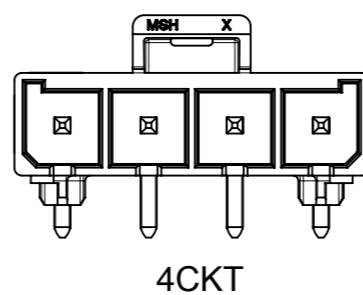
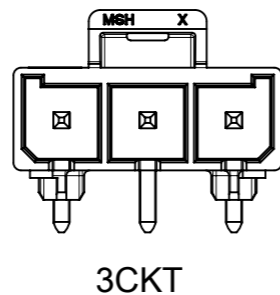
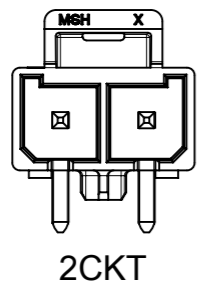


NOTES:

1. MATERIAL:
HOUSING LCP, UL94V-0, GLOW WIRE CAPABLE PER IEC-60335-1 5TH EDITION, COLOR: BLACK .
TERMINAL: HIGH CONDUCTIVITY COPPER.
2. TERMINAL PLATING:
(TIN) 1.52 MICROMETER MIN (60 MICROINCH MIN) REFLOWED MATTE TIN OVER
1.27 MICROMETER MIN (50 MICROINCH MIN) MIN NICKEL OVERALL.
(15 GOLD) 0.38 MICROMETER MIN (15 MICROINCH MIN) SELECTIVE GOLD ON CONTACT AREA
WITH 2.54 MICROMETER MIN (100 MICROINCHES MIN) SELECTIVE TIN ON SOLDER AREA
BOTH OVER 1.27 MICROMETER MIN (50 MICROINCHES MIN) NICKEL OVERALL.
(30 GOLD) 0.76 MICROMETER MIN (30 MICROINCH MIN) SELECTIVE GOLD ON CONTACT AREA
WITH 2.54 MICROMETER MIN (100 MICROINCHES MIN) SELECTIVE TIN ON SOLDER AREA
BOTH OVER 1.27 MICROMETER MIN (50 MICROINCHES MIN) NICKEL OVERALL.
3. PRODUCT SPECIFICATION 1720631000-PS.
4. PACKAGING SPECIFICATION SEE TABLE.
5. PART MATES WITH MOLEX PART NUMBER 200456 SERIES.
6. APPLICATION SPECIFICATION: 768232000-AS
7. PARTS CONFORM TO CLASS "B" REQUIREMENTS OF COSMETIC SPECIFICATION PS-45499-002.
8. TO AVOID INTERFERENCE BETWEEN RECEPTACLE AND PCB, HEADER MUST BE PLACED WITHIN 12.00MM MAX FROM EDGE OF PCB

| | | | | | | | | | | | |
|---|--|-------|--|---------------------------|--|----------------|--|----------------|--|-----------------------------------|--|
| THIS DRAWING CONTAINS INFORMATION THAT IS PROPRIETARY TO MOLEX ELECTRONIC TECHNOLOGIES, LLC AND SHOULD NOT BE USED WITHOUT WRITTEN PERMISSION | | | | | | | | | | | |
| DIMENSION UNITS | | SCALE | | CURRENT REV DESC: | | | | | | molex | |
| mm | | NTS | | | | | | | | | |
| GENERAL TOLERANCES (UNLESS SPECIFIED) | | | | EC NO: 743219 | | | | | | MEGA-FIT S/R HEADER ASSEMBLY(R/A) | |
| ANGULAR TOL ± 3.0 ° | | | | DRWN: WYATTH5 2023/03/14 | | | | | | PRODUCT CUSTOMER DRAWING | |
| 4 PLACES ± | | | | CHK'D: XQZHANG 2023/03/22 | | | | | | DOCUMENT NUMBER | |
| 3 PLACES ± | | | | APPR: XQZHANG 2023/03/22 | | | | | | 2002412000 | |
| 2 PLACES ± 0.25 | | | | INITIAL REVISION: | | | | | | DOC TYPE | |
| 1 PLACE ± 0.35 | | | | DRWN: YXZHENG 2016/09/22 | | | | | | PSD | |
| 0 PLACES ± | | | | APPR: YXZHENG 2018/08/06 | | | | | | DOC PART | |
| DRAFT WHERE APPLICABLE MUST REMAIN WITHIN DIMENSIONS | | | | THIRD ANGLE PROJECTION | | DRAWING | | SERIES | | REVISION | |
| | | | | A3-SIZE | | 200241 | | GENERAL MARKET | | D2 | |
| | | | | SEE TABLE | | GENERAL MARKET | | SHEET NUMBER | | 1 OF 3 | |


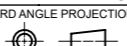


PCB LAYOUT:
 1. COMPONENT SIDE
 2. RECOMMEND PCB THICKNESS: 1.58MM/.062IN TO 2.36MM/.093IN

| | | | | | | | | | |
|---|--|--------|--|------------------------|--|-----------------|--|-----------------------------------|--|
| THIS DRAWING CONTAINS INFORMATION THAT IS PROPRIETARY TO MOLEX ELECTRONIC TECHNOLOGIES, LLC AND SHOULD NOT BE USED WITHOUT WRITTEN PERMISSION | | | | | | | | | |
| DIMENSION UNITS | | SCALE | | CURRENT REV DESC: | | | | molex | |
| mm | | NTS | | | | | | | |
| GENERAL TOLERANCES (UNLESS SPECIFIED) | | | | | | | | | |
| ANGULAR TOL ± 3.0° | | | | | | | | | |
| 4 PLACES | | ± | | EC NO: 743219 | | 2023/03/14 | | MEGA-FIT S/R HEADER ASSEMBLY(R/A) | |
| 3 PLACES | | ± | | DRWN: WYATTH5 | | 2023/03/22 | | | |
| 2 PLACES | | ± 0.25 | | CHK'D: XQZHANG | | 2023/03/22 | | | |
| 1 PLACE | | ± 0.35 | | APPR: XQZHANG | | 2023/03/22 | | PRODUCT CUSTOMER DRAWING | |
| 0 PLACES | | ± | | INITIAL REVISION: | | DOCUMENT NUMBER | | DOC TYPE DOC PART REVISION | |
| | | | | DRWN: YXZHENG | | 2016/09/22 | | 2002412000 | |
| | | | | APPR: YXZHENG | | 2018/08/06 | | PSD 000 D2 | |
| DRAFT WHERE APPLICABLE MUST REMAIN WITHIN DIMENSIONS | | | | THIRD ANGLE PROJECTION | | DRAWING | | SERIES | |
| | | | | | | A3-SIZE | | 200241 | |
| | | | | MATERIAL NUMBER | | CUSTOMER | | SHEET NUMBER | |
| | | | | SEE TABLE | | GENERAL MARKET | | 2 OF 3 | |

| CKT SIZE | RESIN COLER | PART NO. | PLATING | DIM.A | DIM.B | DIM.C | DIM.D | PK DRAW NUMBER |
|----------|-------------|------------|----------|----------|-------|-------|-------|------------------------------|
| 2 | BLACK | 2002411212 | TIN | 12.05 | N/A | 13.05 | 2.85 | 2002412000 (TRAY PK SPEC) |
| 3 | | 2002411213 | | 17.75 | 11.40 | 18.75 | 0.00 | |
| 4 | | 2002414214 | | 23.45 | 17.10 | 24.45 | 2.85 | |
| 5 | | 2002411215 | | 29.15 | 22.80 | 30.15 | 0.00 | |
| 6 | | 2002411216 | | 34.85 | 28.50 | 35.85 | 2.85 | |
| 7 | | 2002411217 | | 40.55 | 34.20 | 41.55 | 0.00 | |
| 8 | | 2002411218 | | 46.25 | 39.90 | 47.25 | 2.85 | |
| 2 | | 2002411222 | | 15" GOLD | 12.05 | N/A | 13.05 | |
| 3 | | 2002411223 | 17.75 | | 11.40 | 18.75 | 0.00 | |
| 4 | | 2002411224 | 23.45 | | 17.10 | 24.45 | 2.85 | |
| 5 | | 2002411225 | 29.15 | | 22.80 | 30.15 | 0.00 | |
| 6 | | 2002411226 | 34.85 | | 28.50 | 35.85 | 2.85 | |
| 7 | | 2002411227 | 40.55 | | 34.20 | 41.55 | 0.00 | |
| 8 | | 2002411228 | 46.25 | | 39.90 | 47.25 | 2.85 | |
| 2 | | 2002411232 | 30" GOLD | | 12.05 | N/A | 13.05 | |
| 3 | | 2002411233 | | 17.75 | 11.40 | 18.75 | 0.00 | |
| 4 | | 2002411234 | | 23.45 | 17.10 | 24.45 | 2.85 | |
| 5 | | 2002411235 | | 29.15 | 22.80 | 30.15 | 0.00 | |
| 6 | | 2002411236 | | 34.85 | 28.50 | 35.85 | 2.85 | |
| 7 | | 2002411237 | | 40.55 | 34.20 | 41.55 | 0.00 | |
| 8 | | 2002411238 | | 46.25 | 39.90 | 47.25 | 2.85 | |

| CKT SIZE | RESIN COLER | PART NO. | PLATING | DIM.A | DIM.B | DIM.C | DIM.D | PK DRAW NUMBER |
|----------|-------------|------------|----------|----------|-------|-------|-------|-----------------------------------|
| 2 | BLACK | 2002411912 | TIN | 12.05 | N/A | 13.05 | 2.85 | 2002411900 (TAPE&REEL PK SPEC) |
| 3 | | 2002411913 | | 17.75 | 11.40 | 18.75 | 0.00 | |
| 4 | | 2002411914 | | 23.45 | 17.10 | 24.45 | 2.85 | |
| 5 | | 2002411915 | | 29.15 | 22.80 | 30.15 | 0.00 | |
| 6 | | 2002411916 | | 34.85 | 28.50 | 35.85 | 2.85 | |
| 7 | | 2002411917 | | 40.55 | 34.20 | 41.55 | 0.00 | |
| 8 | | 2002411918 | | 46.25 | 39.90 | 47.25 | 2.85 | |
| 2 | | 2002411922 | | 15" GOLD | 12.05 | N/A | 13.05 | |
| 3 | | 2002411923 | 17.75 | | 11.40 | 18.75 | 0.00 | |
| 4 | | 2002411924 | 23.45 | | 17.10 | 24.45 | 2.85 | |
| 5 | | 2002411925 | 29.15 | | 22.80 | 30.15 | 0.00 | |
| 6 | | 2002411926 | 34.85 | | 28.50 | 35.85 | 2.85 | |
| 7 | | 2002411927 | 40.55 | | 34.20 | 41.55 | 0.00 | |
| 8 | | 2002411928 | 46.25 | | 39.90 | 47.25 | 2.85 | |
| 2 | | 2002411932 | 30" GOLD | | 12.05 | N/A | 13.05 | |
| 3 | | 2002411933 | | 17.75 | 11.40 | 18.75 | 0.00 | |
| 4 | | 2002411934 | | 23.45 | 17.10 | 24.45 | 2.85 | |
| 5 | | 2002411935 | | 29.15 | 22.80 | 30.15 | 0.00 | |
| 6 | | 2002411936 | | 34.85 | 28.50 | 35.85 | 2.85 | |
| 7 | | 2002411937 | | 40.55 | 34.20 | 41.55 | 0.00 | |
| 8 | | 2002411938 | | 46.25 | 39.90 | 47.25 | 2.85 | |

| | | | | | | | | | | |
|---|-------|---|---------|--------|-----------------|--|--|--|--------|--|
| THIS DRAWING CONTAINS INFORMATION THAT IS PROPRIETARY TO MOLEX ELECTRONIC TECHNOLOGIES, LLC AND SHOULD NOT BE USED WITHOUT WRITTEN PERMISSION | | | | | | | | | | |
| DIMENSION UNITS | SCALE | CURRENT REV DESC: | | | | |  MEGA-FIT S/R HEADER ASSEMBLY(R/A) | | | |
| mm | NTS | | | | | | | | | |
| GENERAL TOLERANCES (UNLESS SPECIFIED) | | EC NO: 743219 | | | | | PRODUCT CUSTOMER DRAWING | | | |
| ANGULAR TOL ± 3.0° | | DRWN: WYATTH5 2023/03/14 | | | | | | | | |
| 4 PLACES ± | | CHK'D: XQZHANG 2023/03/22 | | | | | DOCUMENT NUMBER: 2002412000 DOC TYPE: PSD DOC PART: 000 REVISION: D2 | | | |
| 3 PLACES ± | | APPR: XQZHANG 2023/03/22 | | | | | | | | |
| 2 PLACES ± 0.25 | | INITIAL REVISION: | | | | | MATERIAL NUMBER: SEE TABLE CUSTOMER: GENERAL MARKET | | | |
| 1 PLACE ± 0.35 | | DRWN: YXZHENG 2016/09/22 | | | | | | | | |
| 0 PLACES ± | | APPR: YXZHENG 2018/08/06 | | | | | SHEET NUMBER: 3 OF 3 | | | |
| DRAFT WHERE APPLICABLE MUST REMAIN WITHIN DIMENSIONS | | THIRD ANGLE PROJECTION | DRAWING | SERIES | MATERIAL NUMBER | | | | | |
| | |  | A3-SIZE | 200241 | SEE TABLE | | GENERAL MARKET | | 3 OF 3 | |

| | | | | |
|-----------------|----|--------------|------------|----------|
| DOCUMENT STATUS | P1 | RELEASE DATE | 2023/03/22 | 10:00:00 |
|-----------------|----|--------------|------------|----------|