

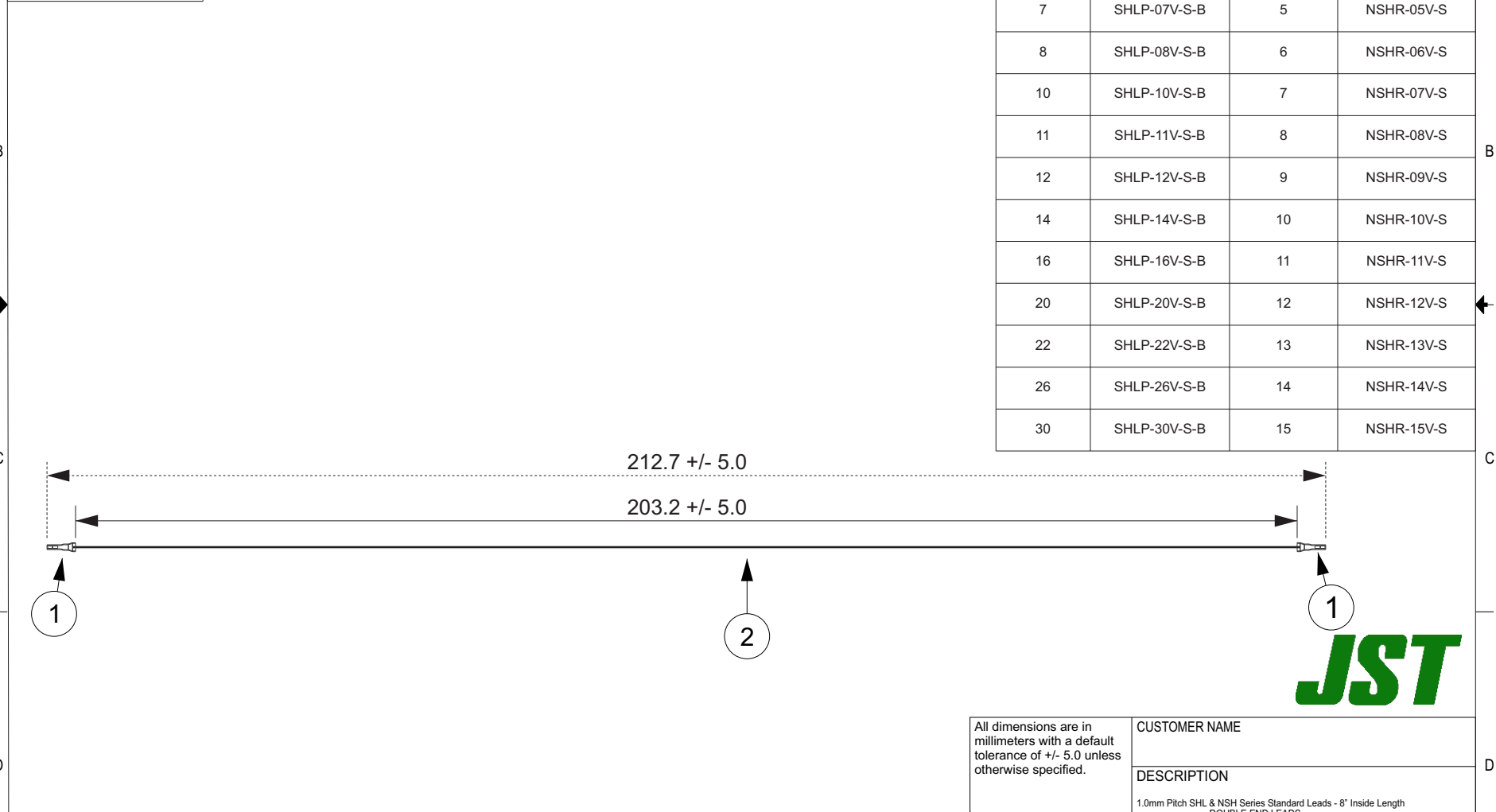
THIS DRAWING CONTAINS INFORMATION THAT IS PROPRIETARY TO J.S.T. AND SHALL NOT BE USED OR SHOWN WITHOUT WRITTEN PERMISSION.

Item No.	Part No.	Description
1	SSHL-003T-P0.2	SHL Connector Contact
2	UL1571 (BCD), 28 AWG	Black

Electrical Specifications
Current: 1.0A AC/DC
Voltage: 50V AC/DC

### APPLICABLE HOUSINGS

SHL		NSH	
NO. OF CIRCUITS	HOUSING PART NO.	NO. OF CIRCUITS	HOUSING PART NO.
2	SHLP-02V-S-B	2	NSHR-02V-S
5	SHLP-05V-S-B	3	NSHR-03V-S
6	SHLP-06V-S-B	4	NSHR-04V-S
7	SHLP-07V-S-B	5	NSHR-05V-S
8	SHLP-08V-S-B	6	NSHR-06V-S
10	SHLP-10V-S-B	7	NSHR-07V-S
11	SHLP-11V-S-B	8	NSHR-08V-S
12	SHLP-12V-S-B	9	NSHR-09V-S
14	SHLP-14V-S-B	10	NSHR-10V-S
16	SHLP-16V-S-B	11	NSHR-11V-S
20	SHLP-20V-S-B	12	NSHR-12V-S
22	SHLP-22V-S-B	13	NSHR-13V-S
26	SHLP-26V-S-B	14	NSHR-14V-S
30	SHLP-30V-S-B	15	NSHR-15V-S



All dimensions are in millimeters with a default tolerance of +/- 5.0 unless otherwise specified.	CUSTOMER NAME			
	DESCRIPTION 1.0mm Pitch SHL & NSH Series Standard Leads - 8" Inside Length DOUBLE END LEADS			
Drawn By: Larissa Mosley	SIZE	CUSTOMER PART NO.	PART NO.	REV
Checked By: Steven Pilkington	SCALE 1:1	DRAWING NO. GAM-308	ASSHLSHL28K203	DATE 4/23/2018

ZONE	REV	DESCRIPTION	DATE	APPROVED
1	1	Add Electrical Specifications	6/29/2018	LM