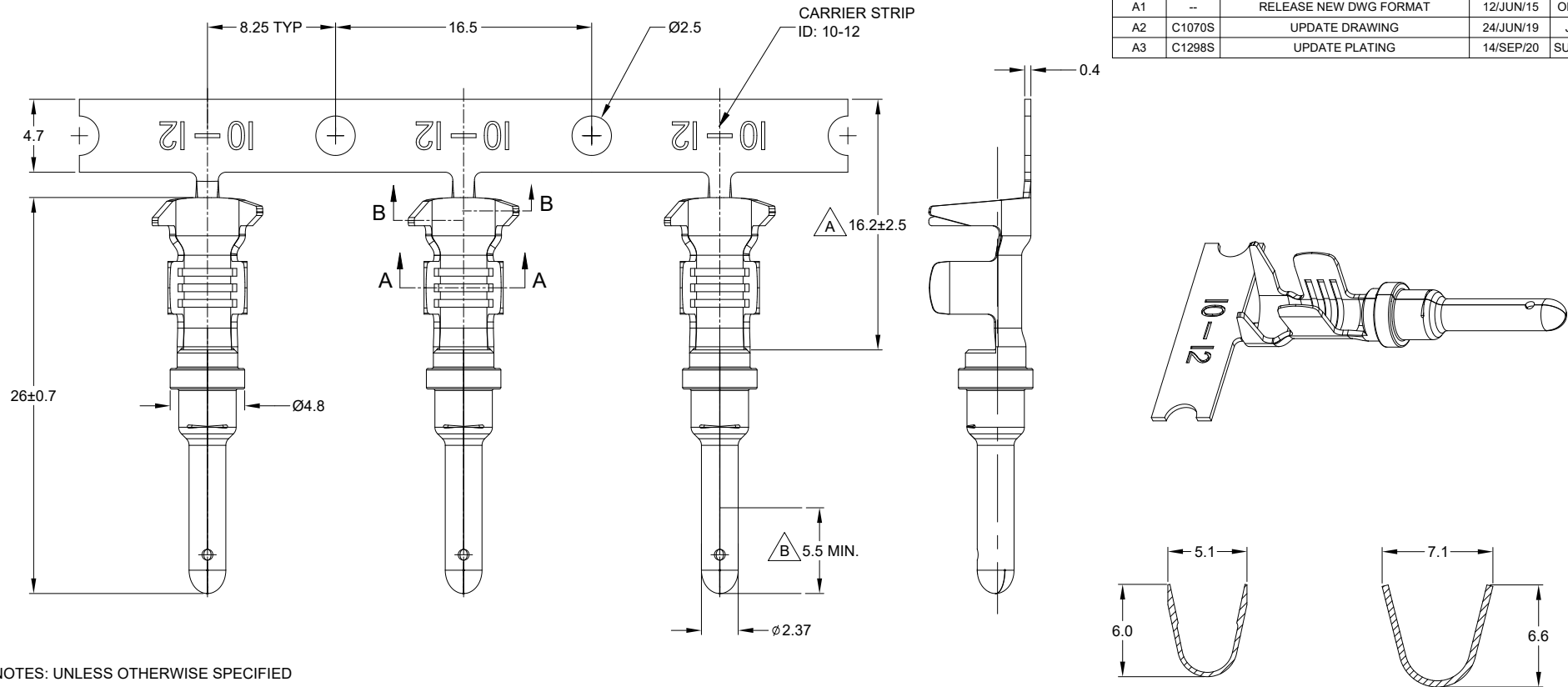


REVISIONS					
REV	ECO	DESCRIPTION	DATE	BY	APPR
A1	--	RELEASE NEW DWG FORMAT	12/JUN/15	ORION	-
A2	C1070S	UPDATE DRAWING	24/JUN/19	JOE	TOMMY
A3	C1298S	UPDATE PLATING	14/SEP/20	SULLEN	TOMMY



NOTES: UNLESS OTHERWISE SPECIFIED

- MATERIAL: COPPER ALLOY
- PLATING: SEE PART NUMBER CHART
- CONTACT SIZE: 12
- SPECIFICATIONS:
  - CURRENT RATING: 25 AMPS
  - CONTACT MILLIVOLT DROP: 100 MILLIVOLT DROP @ 25 AMP TEST CURRENT.
  - RoHS COMPLIANT
- RECOMMENDED WIRE RANGE: 10 - 12 AWG (6.0 - 4.0MM<sup>2</sup>)  
RECOMMENDED INSUL O.D: 3.56 - 5.18MM (0.140 - 0.204INCH)
- PACKAGE: 2000 PCS/REEL
- AVAILABLE APPLICATORS: MFX-3973-K OR MFX-3973-G
- ALL DIMENSIONS ARE FOR REFERENCE USE ONLY

PART NUMBER CHART		
PLATING	PART NUMBER	PLATING DESCRIPTION
NICKEL	AT60-12-0222	SELECTIVE TIN OVER NICKEL OVERALL IN $\Delta$ ZONE
GOLD	AT60-12-0244	SELECTIVE GOLD FLASH OVER NICKEL OVERALL IN $\nabla$ ZONE OR ENTIRE CONTACT
TIN	AT60-12-0277	TIN OVER NICKEL OVERALL

SEE PART NUMBER CHART		REF: 1060-12-0222, 1060-12-0244	
PART NUMBER		DESCRIPTION	
QUANTITY	MATERIALS LIST		
UNLESS OTHERWISE SPECIFIED		SIGNATURES	
1) All dimensions are in metric (mm).		DRAWN: SULLENZHANG	DATE: 14/SEP/20
2) Tolerances are as follows:		CHECKED: ORIONLI	DATE: 15/SEP/20
1 PL DEC ±0.30		ENGINEER:	
2 PL DEC ±0.15		APPROVAL: TOMMYXIE	DATE: 18/SEP/20
3 PL DEC ±0.08		CUSTOMER:	
3) Note reference = $\Delta$		THIS DRAWING IS SUPPLIED FOR INFORMATION ONLY. DESIGN FEATURES, SPECIFICATIONS AND PERFORMANCE DATA SHOWN HEREON ARE THE PROPERTY OF THE AMPHENOL CORPORATION. NO RIGHTS OF REPRODUCTION ARE IMPLIED. ALL DIMENSIONS ARE SUBJECT TO NORMAL MANUFACTURING VARIATIONS.	
MATERIAL SPECIFICATIONS:		CONTACT, PIN, STAMPED, SIZE 12, 10-12 AWG, A SERIES	
PROCESS SPECIFICATIONS:		SIZE: B C-	DWG NO: AT60-12-02XX
NEXT ASSY:		SCALE: NONE	REVISION: A3

TITLE: PIN, STAMPED, SIZE 12, 10-12 AWG, A SERIES  
 DWG NO: AT60-12-02XX  
 REV: A3  
 SH: 1  
 OF: 1

**Amphenol**  
 Sine Systems - www.amphenol-sine.com  
 44724 Morley Drive  
 Clinton Township, MI 48036